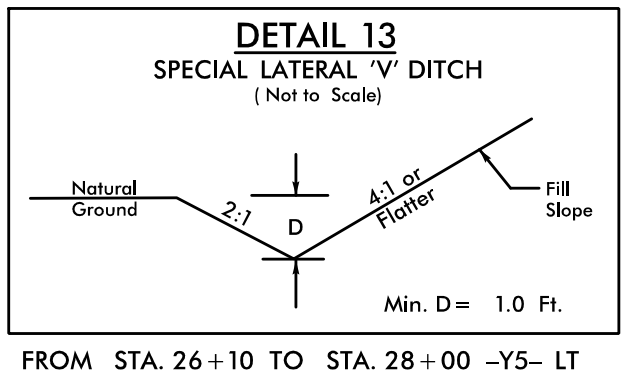


PROJECT REFERENCE NO.	SHEET NO.
U-4405	EC-66/CONST.29
RW SHEET NO.	
ROADWAY DESIGN ENGINEER	HYDRAULICS ENGINEER

NOTES: ANY DEVIATION FROM OPTIONS GIVEN WILL REQUIRE PRIOR APPROVAL BY ENGINEER.

ADDITIONAL EROSION CONTROL DEVICES MAY NEED TO BE INSTALLED AS DIRECTED.

INSTALL FABRIC INSERT INLET PROTECTION DEVICE IN LIEU OF ROCK INLET SEDIMENT TRAP TYPE 'C' AS DIRECTED TO AVOID PONDING OF RUNOFF IN ROADWAY OPEN TO PUBLIC TRAFFIC

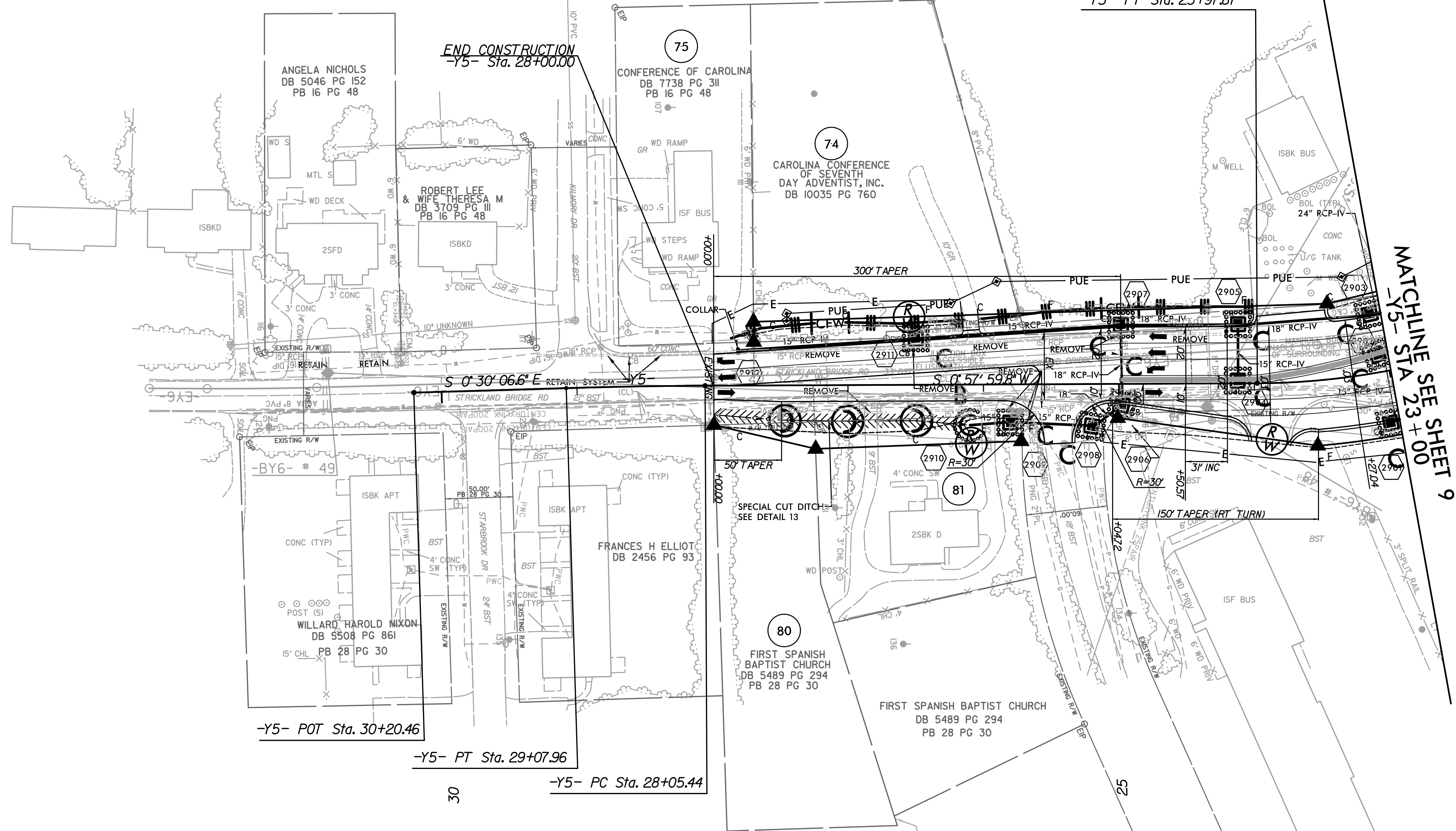


NC GRID  
NAD 83/NA 2011

71  
CIRCLE K STORES INC  
DB 9852 PG 592  
PB 137 PG 124

-Y5- PT Sta. 23+97.87

END CONSTRUCTION  
-Y5- Sta. 28+00.00



MATCHLINE SEE SHEET 9  
-Y5- STA 23+00

-Y5-	
PI Sta 28+56.71	PI Sta 22+82.12
$\Delta = 1' 28' 06.4''$ (LT)	$\Delta = 25' 18' 13.3''$ (RT)
$D = 1' 25' 56.6''$	$D = 10' 44' 58.8''$
$L = 102.52'$	$L = 235.39'$
$T = 51.26'$	$T = 119.65'$
$R = 4,000.00'$	$R = 533.00'$
	SE = 0.02

-Y5-	
PI Sta 22+82.12	PI Sta 22+82.12
$\Delta = 10' 44' 58.8''$	$\Delta = 10' 44' 58.8''$
$L = 235.39'$	$L = 235.39'$
$R = 533.00'$	$R = 533.00'$
SE = 0.02	SE = 0.02

NOTE: SEE SHEET 46 FOR -Y5- PROFILE

REVISIONS

8/17/99  
10:40:43 AM  
R:\Environmental\Design\4405\_REU\_EC\_psh\_29\_final.dgn