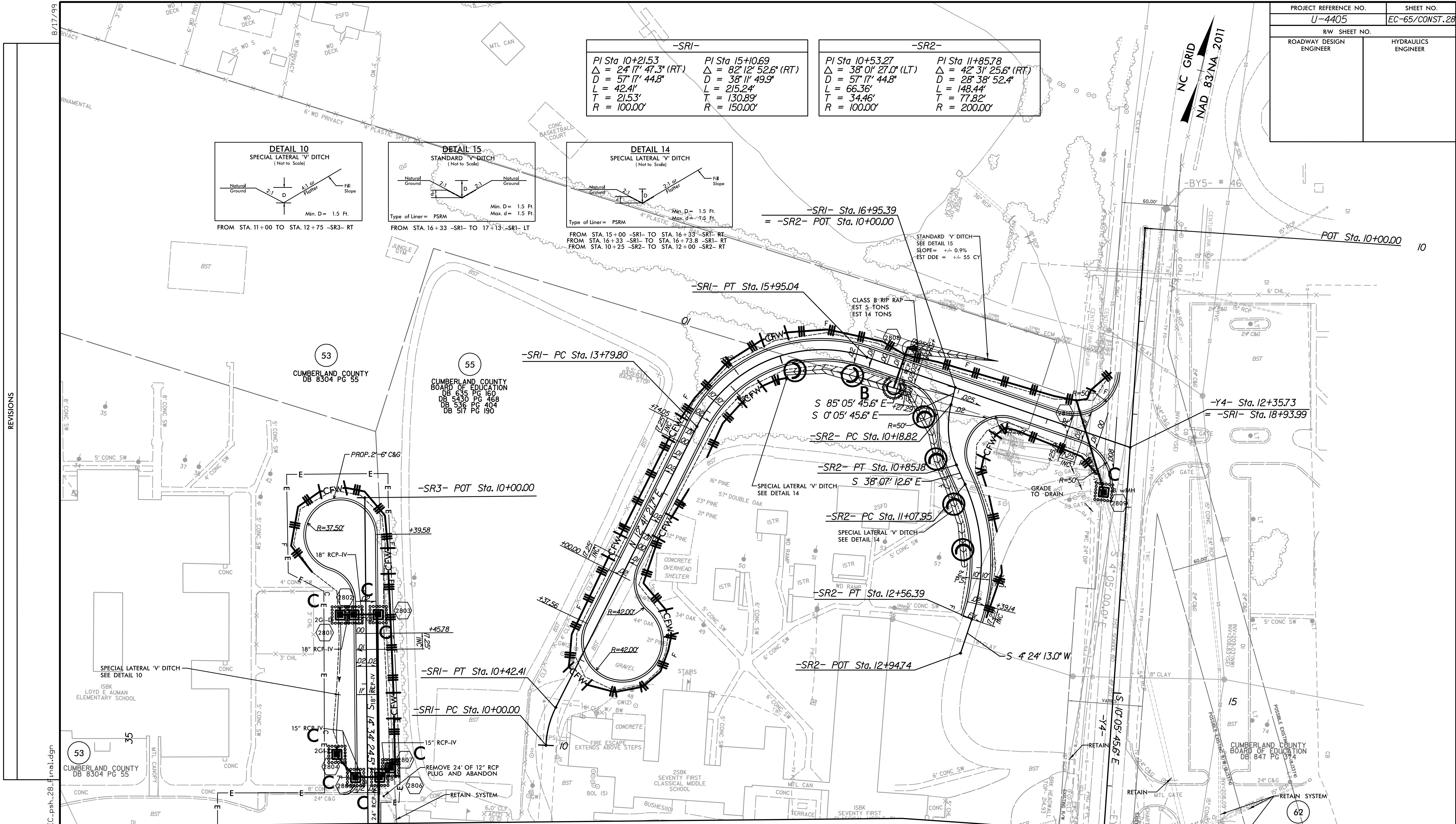
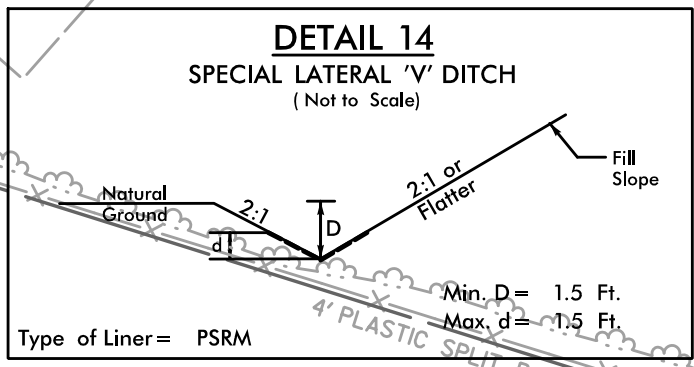
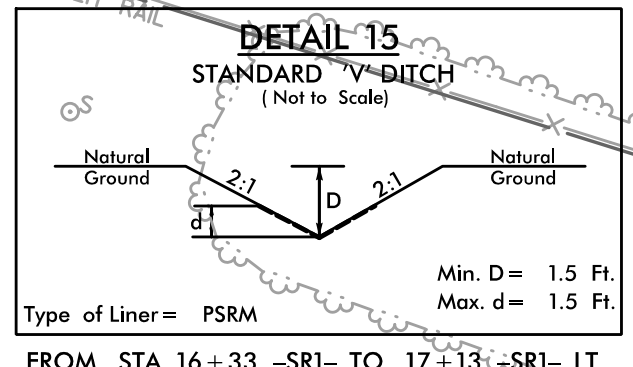
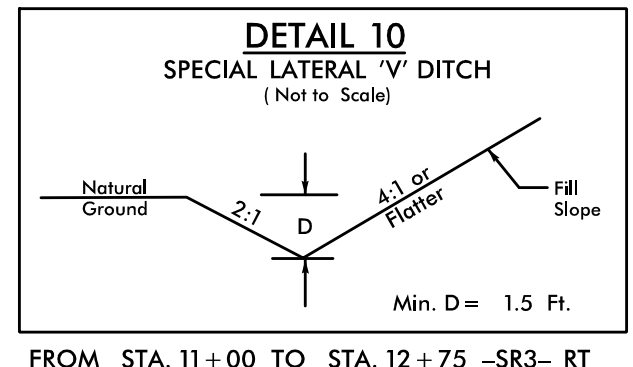


PROJECT REFERENCE NO.	SHEET NO.
U-4405	EC-65/CONST.28
RW SHEET NO.	
ROADWAY DESIGN ENGINEER	HYDRAULICS ENGINEER

-SR1-		-SR2-	
PI Sta 10+21.53	PI Sta 15+10.69	PI Sta 10+53.27	PI Sta 11+85.78
$\Delta = 24' 17" 47.3" (RT)$	$\Delta = 82' 12" 52.6" (RT)$	$\Delta = 38' 01" 27.0" (LT)$	$\Delta = 42' 31" 25.6" (RT)$
$D = 57' 17" 44.8"$	$D = 38' 11" 49.9"$	$D = 57' 17" 44.8"$	$D = 28' 38" 52.4"$
$L = 42.41'$	$L = 215.24'$	$L = 66.36'$	$L = 148.44'$
$T = 21.53'$	$T = 130.89'$	$T = 34.46'$	$T = 77.82'$
$R = 100.00'$	$R = 150.00'$	$R = 100.00'$	$R = 200.00'$



REVISIONS

MATCHLINE SEE SHEET 6  
-SR3- STA 13+50

MATCHLINE SEE SHEET 6  
-Y4- STA 16+50

NOTES: ANY DEVIATION FROM OPTIONS GIVEN WILL REQUIRE PRIOR APPROVAL BY ENGINEER.

ADDITIONAL EROSION CONTROL DEVICES MAY NEED TO BE INSTALLED AS DIRECTED.

INSTALL FABRIC INSERT INLET PROTECTION DEVICE IN LIEU OF ROCK INLET SEDIMENT TRAP TYPE 'C' AS DIRECTED TO AVOID PONDING OF RUNOFF IN ROADWAY OPEN TO PUBLIC TRAFFIC

NOTE: SEE SHEET 50 FOR -SR1- PROFILE  
SEE SHEET 51 FOR -SR2- PROFILE  
SEE SHEET 51 FOR -SR3- PROFILE

12:40:06 PM H:\Environmental\Design\4405\_REL\_EC\_psh\_28\_Final.dgn