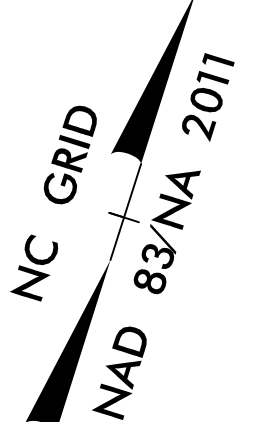
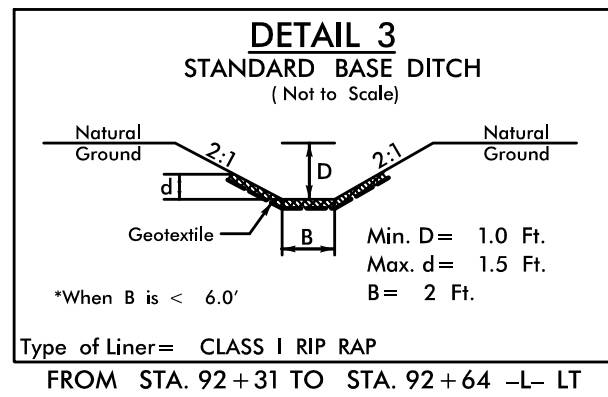


PROJECT REFERENCE NO.	SHEET NO.
U-4405	EC-47/CONST.10
R/W SHEET NO.	HYDRAULICS ENGINEER
ROADWAY DESIGN ENGINEER	

NOTES: ANY DEVIATION FROM OPTIONS GIVEN WILL REQUIRE PRIOR APPROVAL BY ENGINEER.

ADDITIONAL EROSION CONTROL DEVICES MAY NEED TO BE INSTALLED AS DIRECTED.

INSTALL FABRIC INSERT INLET PROTECTION DEVICE IN LIEU OF ROCK INLET SEDIMENT TRAP TYPE 'C' AS DIRECTED TO AVOID PONDING OF RUNOFF IN ROADWAY OPEN TO PUBLIC TRAFFIC



-Y7-  
 PI Sta 12+57.36  
 $\Delta = 20^\circ 39' 00.6''$  (RT)  
 $D = 6^\circ 30' 00.0''$   
 $L = 317.69'$   
 $T = 160.59'$   
 $R = 881.47'$

-L-  
 PIs Sta 88+21.95  
 $\Theta_s = 0^\circ 27' 17.0''$   
 $L_s = 100.00'$   
 $LT = 66.67'$   
 $ST = 33.33'$

STANDARD BASE DITCH  
 W/CLASS 1 RIP RAP  
 SEE DETAIL 3  
 EST 65 TONS  
 EST 120 CY GEOTEXTILE  
 EST DDE = 30 CY  
 SLOPE = 6.0%

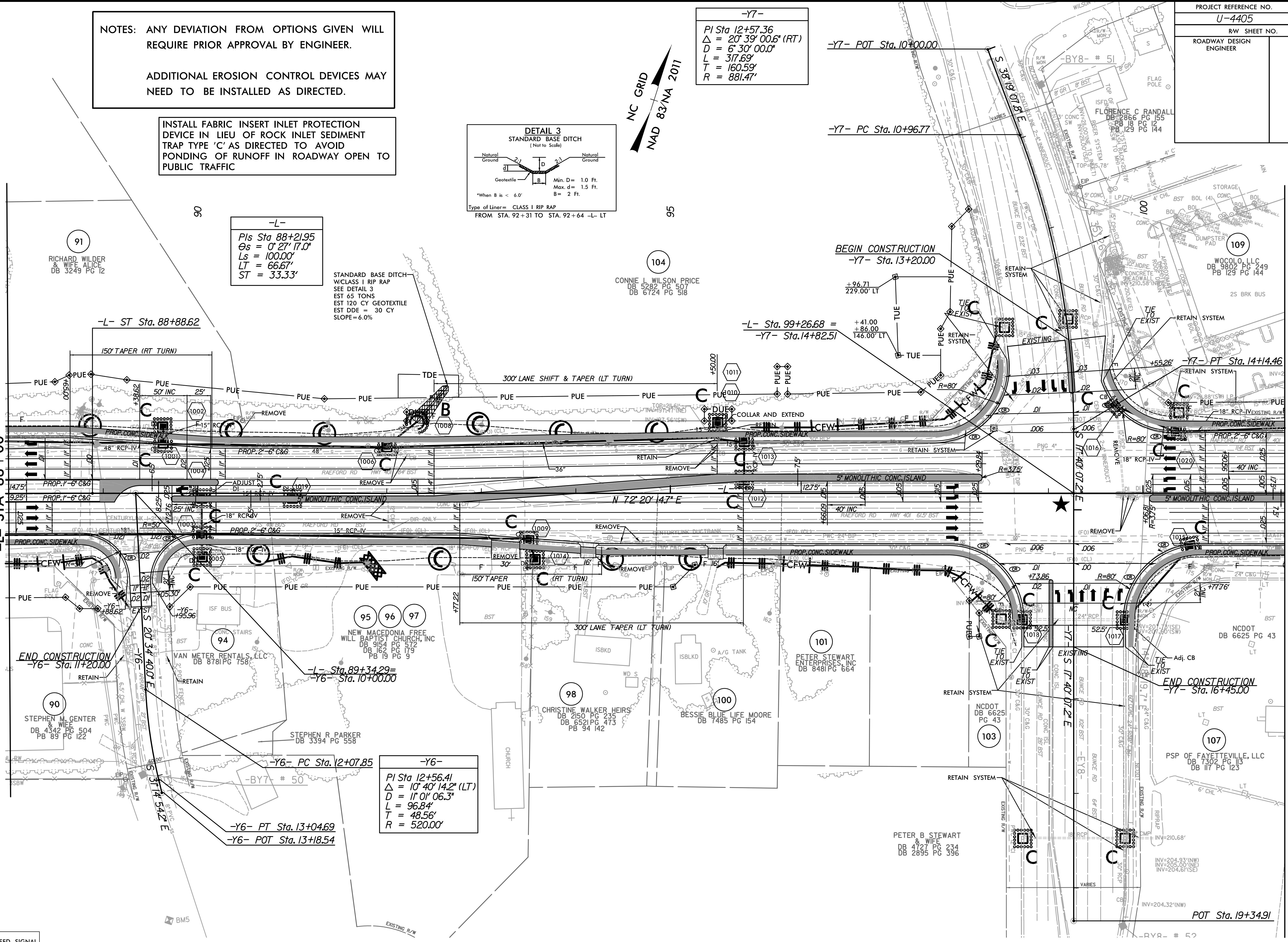
-Y6-  
 PI Sta 12+56.41  
 $\Delta = 10^\circ 40' 14.2''$  (LT)  
 $D = 1^\circ 0' 06.3''$   
 $L = 96.84'$   
 $T = 48.56'$   
 $R = 520.00'$

8/17/99  
 10:35:08 AM  
 R:\Environmental\Design\4405.REU.EC\_psh.10.Final.dgn  
 ricl@carroll.com

REVISIONS

MATCHLINE SEE SHEET 9  
 -L- STA 88+00

MATCHLINE SEE SHEET 11  
 -L- STA 101+50



- ★ PROPOSED SIGNAL
- ▬ PROP CONC SIDEWALK

\*\* A DESIGN EXCEPTION FOR LANE WIDTH IS REQUIRED FOR -L- STA. 38+95.00 TO -L- 319+95.00

NOTE: SEE SHEET 35&36 FOR -L- PROFILE  
 SEE SHEET 47 FOR -Y6- PROFILE  
 SEE SHEET 47 FOR -Y7- PROFILE