

PROJECT REFERENCE NO.	SHEET NO.
U-4405	EC-42/CONST.05
RW SHEET NO.	
ROADWAY DESIGN ENGINEER	HYDRAULICS ENGINEER

NOTES: ANY DEVIATION FROM OPTIONS GIVEN WILL REQUIRE PRIOR APPROVAL BY ENGINEER.

ADDITIONAL EROSION CONTROL DEVICES MAY NEED TO BE INSTALLED AS DIRECTED.

INSTALL FABRIC INSERT INLET PROTECTION DEVICE IN LIEU OF ROCK INLET SEDIMENT TRAP TYPE 'C' AS DIRECTED TO AVOID PONDING OF RUNOFF IN ROADWAY OPEN TO PUBLIC TRAFFIC

NC GRID
NAD 83/NA 2011

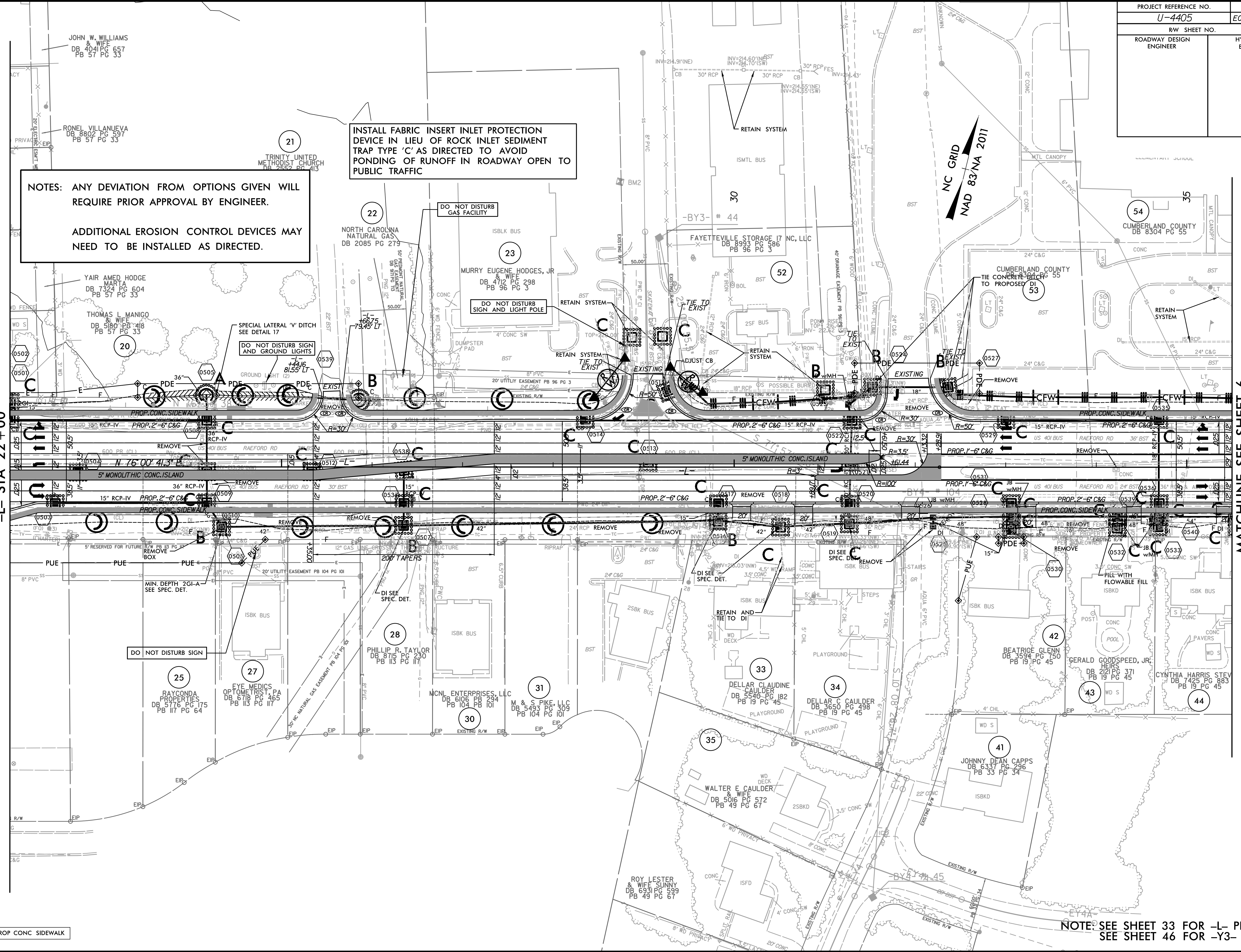
MATCHLINE SEE SHEET 4
-L- STA 22 + 00

MATCHLINE SEE SHEET 6
-L- STA 35 + 50

8/17/99
10:33:29 AM
R:\Environmental\Design\4405.REU.EC_psh_05_1.mxd
11/11/2011 10:33:29 AM
R:\Environmental\Design\4405.REU.EC_psh_05_1.mxd

PROF CONC SIDEWALK

NOTE: SEE SHEET 33 FOR -L- PROFILE
SEE SHEET 46 FOR -Y3- PROFILE



REVISIONS