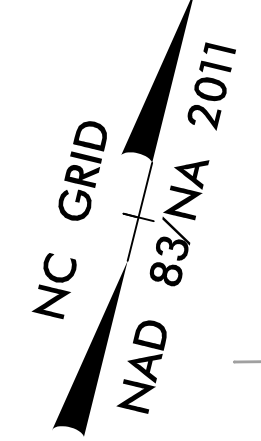


PROJECT REFERENCE NO.	SHEET NO.
U-4405	EC-41/CONST.04
RW SHEET NO.	
ROADWAY DESIGN ENGINEER	HYDRAULICS ENGINEER

NOTES: ANY DEVIATION FROM OPTIONS GIVEN WILL REQUIRE PRIOR APPROVAL BY ENGINEER.

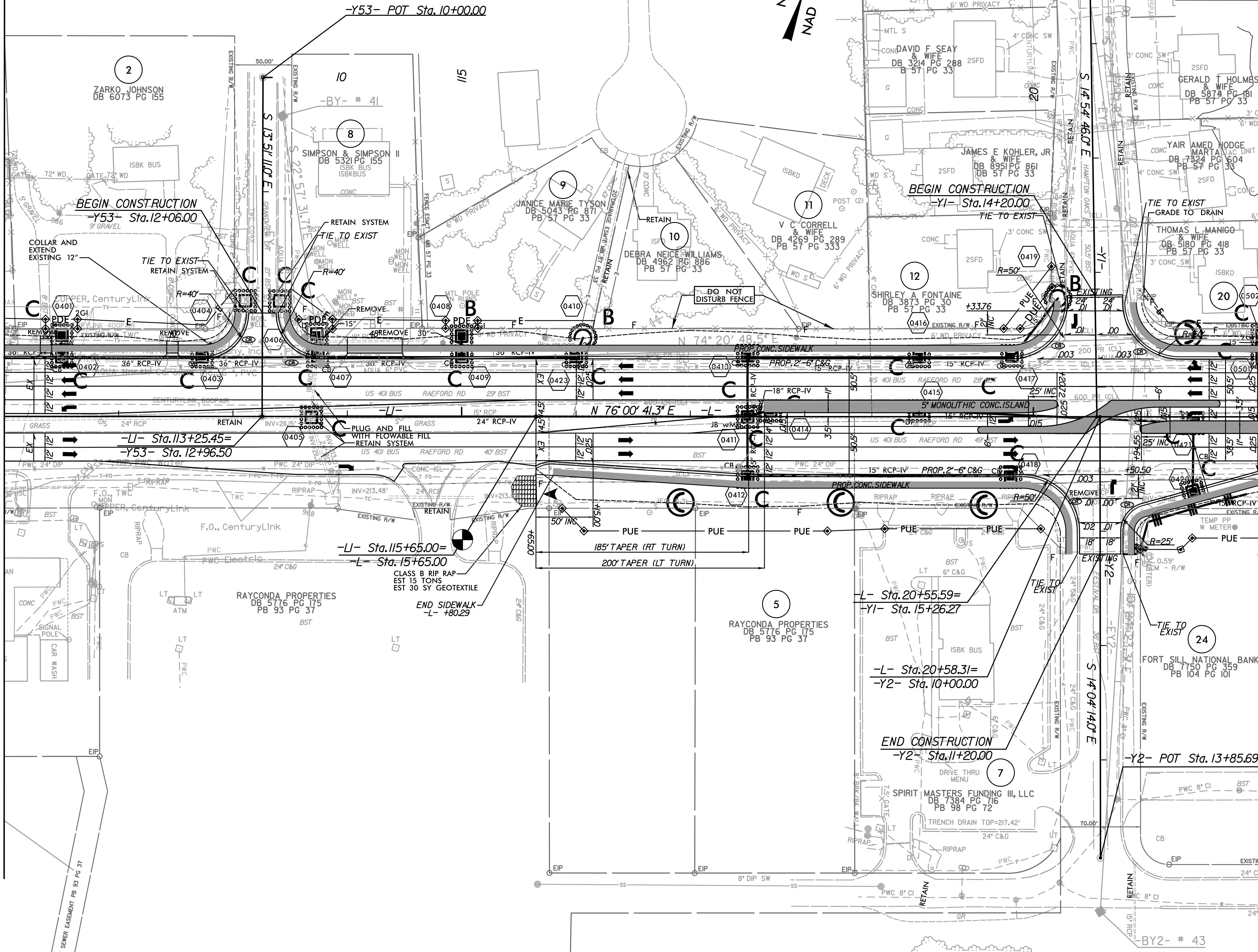
ADDITIONAL EROSION CONTROL DEVICES MAY NEED TO BE INSTALLED AS DIRECTED.

INSTALL FABRIC INSERT INLET PROTECTION DEVICE IN LIEU OF ROCK INLET SEDIMENT TRAP TYPE 'C' AS DIRECTED TO AVOID PONDING OF RUNOFF IN ROADWAY OPEN TO PUBLIC TRAFFIC



MATCHLINE SEE SHEET 4B
-L1- STA 11+00

MATCHLINE SEE SHEET 5
-L- STA 22+00



REVISIONS

I0:33:09 AM
R:\Environmental\Design\4405_REU_EC_psh_04.dgn
alobacat

PROP CONC SIDEWALK

NOTE: SEE SHEET 33 FOR -L- PROFILE
SEE SHEET 46 FOR -Y1- PROFILE
SEE SHEET 46 FOR -Y2- PROFILE