

PROJECT REFERENCE NO.	SHEET NO.
U-4405	EC-20/CONST.15
RW SHEET NO.	
ROADWAY DESIGN ENGINEER	HYDRAULICS ENGINEER

CLEARING AND GRUBBING EROSION CONTROL FOR CONSTRUCTION SHEET 15

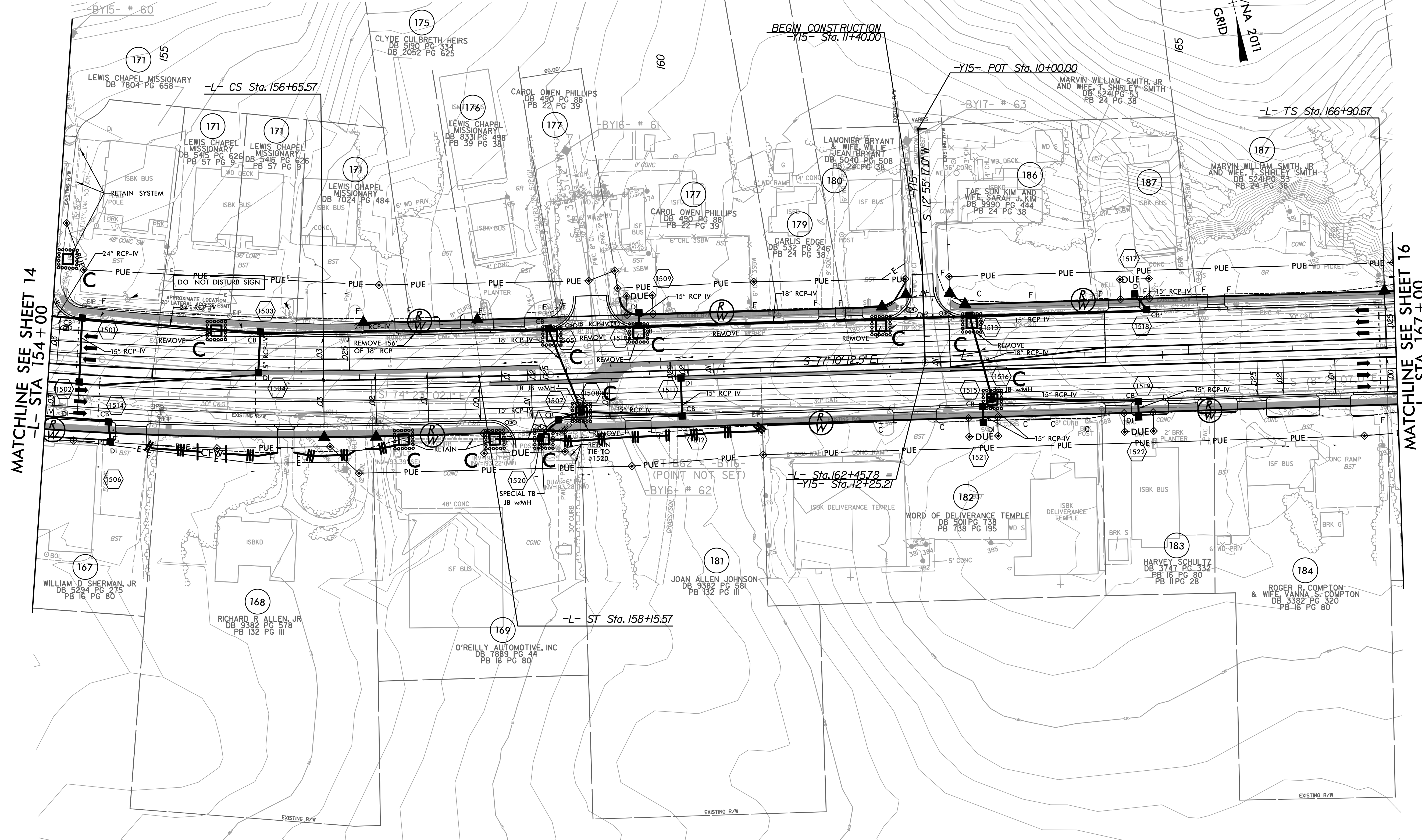
NOTE: PLACE TEMPORARY ROCK SEDIMENT DAMS TYPE - B AND TEMPORARY ROCK SILT CHECKS TYPE - A AT DRAINAGE OUTLETS.

NOTES: ANY DEVIATION FROM OPTIONS GIVEN WILL REQUIRE PRIOR APPROVAL BY ENGINEER.

ADDITIONAL EROSION CONTROL DEVICES MAY NEED TO BE INSTALLED AS DIRECTED.

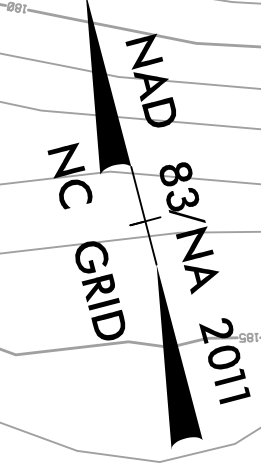
INSTALL FABRIC INSERT INLET PROTECTION DEVICE IN LIEU OF ROCK INLET SEDIMENT TRAP TYPE 'C' AS DIRECTED TO AVOID PONDING OF RUNOFF IN ROADWAY OPEN TO PUBLIC TRAFFIC

PI Sta 155+10.7 $\Delta = 5'10" 21.2" (LT)$ $D = 1'39" 47.4"$ $L = 311.0'$ $T = 155.6'$ $R = 3,445.00'$ $SE = 0.03$	Pls Sta 157+15.57 $\theta_s = 1'14" 50.5"$ $L_s = 150.00'$ $LT = 100.00'$ $ST = 50.00'$	Pls Sta 167+90.68 $\theta_s = 2'14" 59.4"$ $L_s = 150.00'$ $LT = 100.00'$ $ST = 50.00'$
---	---	---



MATCHLINE SEE SHEET 14  
-L- STA 154+00

MATCHLINE SEE SHEET 16  
-L- STA 167+00



REVISIONS

PROP CONC SIDEWALK

\*\* A DESIGN EXCEPTION FOR LANE WIDTH IS REQUIRED FOR -L- STA. 38+95.00 TO -L- 319+95.00

NOTE: SEE SHEET 38 FOR -L- PROFILE  
SEE SHEET 48 FOR -Y15- PROFILE

8/17/99  
I02711AM  
R:\Environmental\Design\4405\_REU\_EC\_psh\_15.dgn