

See Sheet 1A For Index of Sheets
See Sheet 1B For Conventional Symbols

STATE OF NORTH CAROLINA
DIVISION OF HIGHWAYS

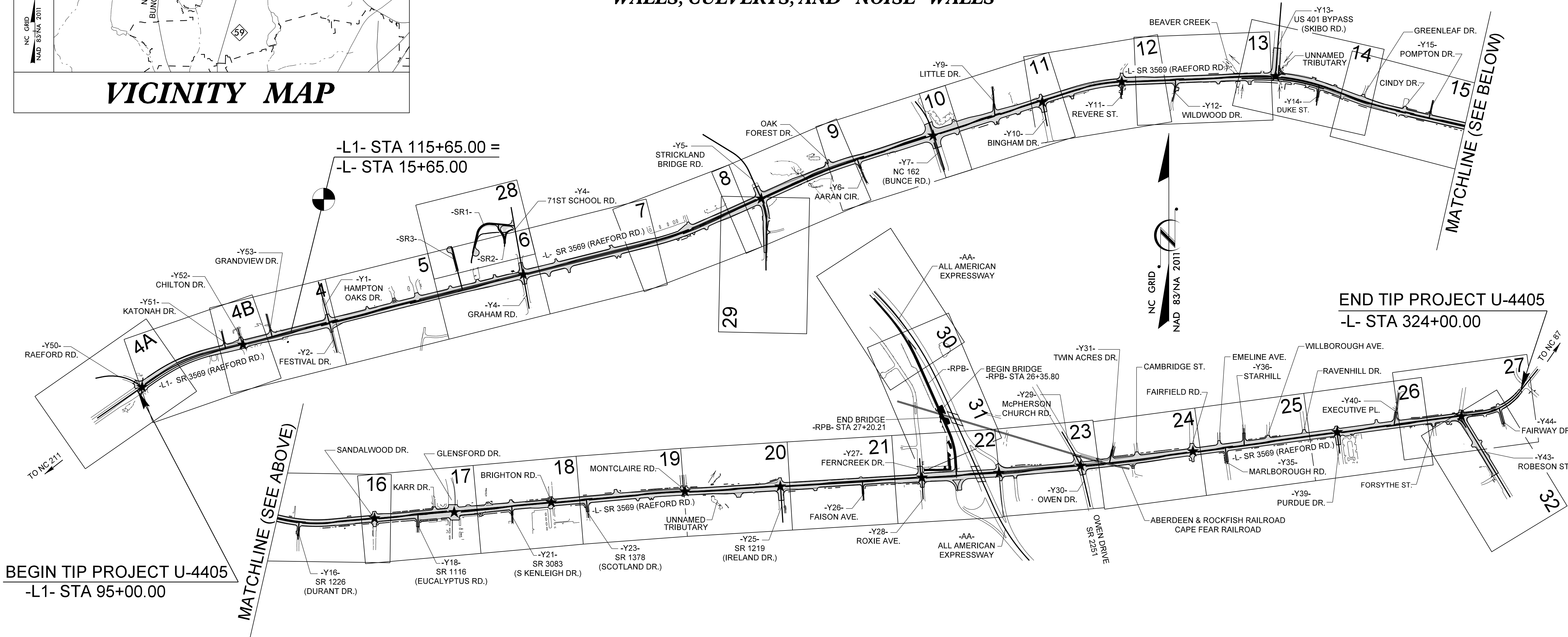
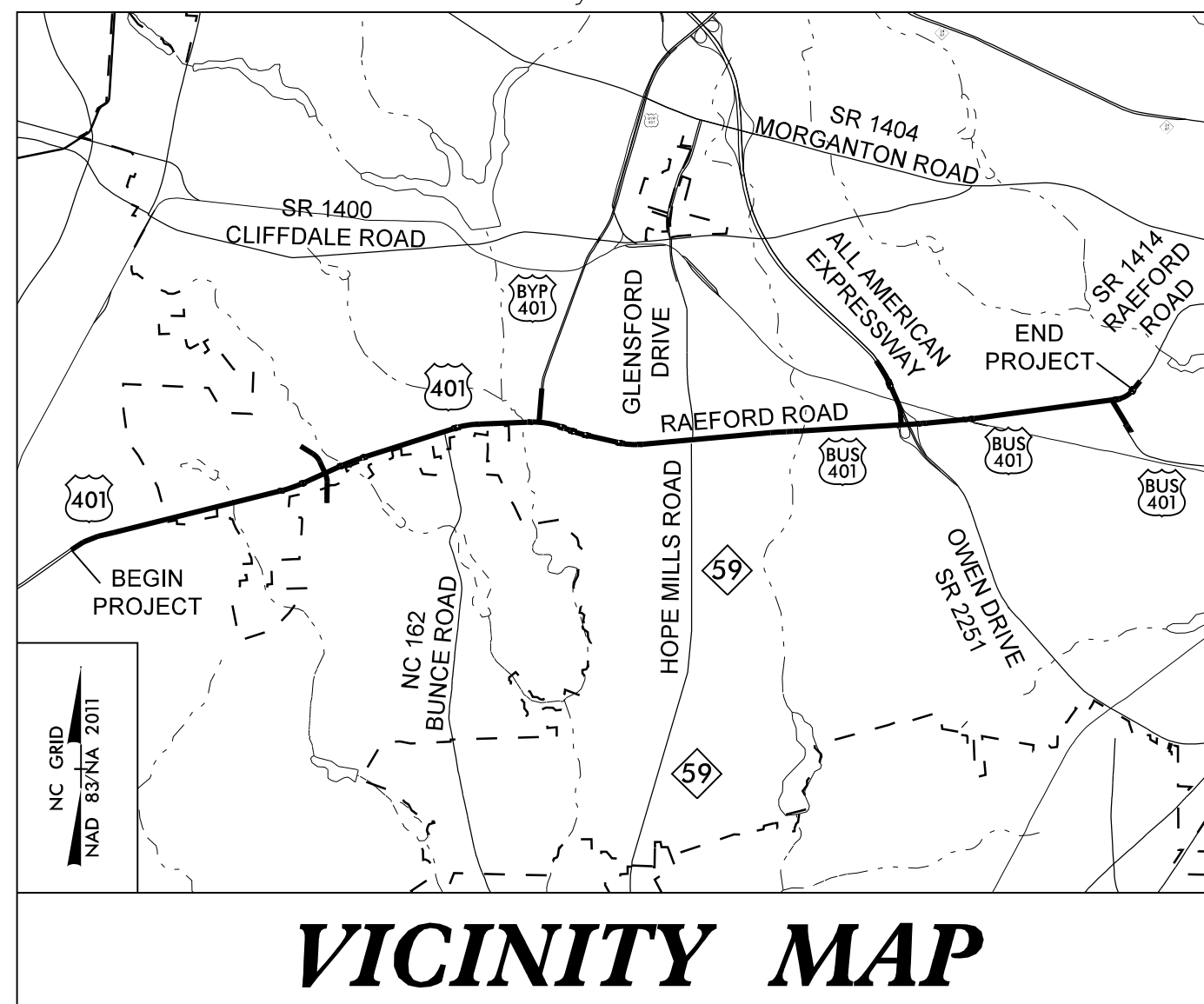
CUMBERLAND COUNTY

**LOCATION: US 401 FROM OLD RAEFORD ROAD TO EAST OF FAIRWAY DRIVE
IN FAYETTEVILLE**

**TYPE OF WORK: GRADING, DRAINAGE, PAVING, SIGNALS, STRUCTURE, RETAINING
WALLS, CULVERTS, AND NOISE WALLS**

STATE	STATE PROJECT REFERENCE NO.	SHEET NO.	TOTAL SHEETS
N.C.	U-4405	1	
STATE PROJ. NO.	F.A. PROJ. NO.	DESCRIPTION	
39049.1.1	STPDA-0401(230)	PE	
39049.2.1	STPDA-0401(230)	RW	
39049.2.1	STPDA-0401(230)	UTIL	
39049.3.1	STPDA-0401(230)	CONST	

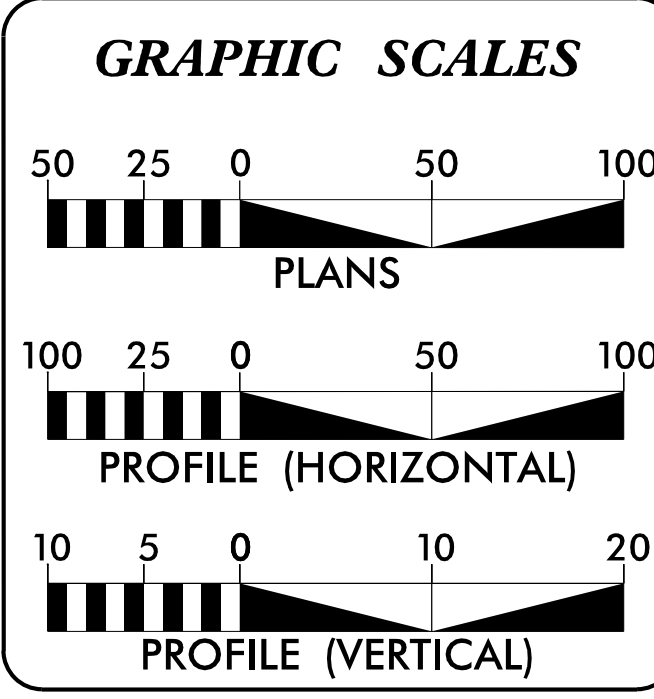
TIP PROJECT: U-4405



CONTRACT: C204107

★ PROPOSED SIGNAL

**DOCUMENT NOT CONSIDERED FINAL
UNLESS ALL SIGNATURES COMPLETED**



DESIGN DATA

ADT 2018 =	63,150
ADT 2038 =	70,975
K =	10 %
D =	60 %
T =	3 %*
V =	50 MPH
*(TTST = 1% & DUAL = 2%)	
FUNC CLASS =	URBAN ARTERIAL
	REGIONAL TIER

PROJECT LENGTH

LENGTH ROADWAY TIP PROJECT U-4405 = 6.231 MILES
TOTAL LENGTH TIP PROJECT U-4405 = 6.231 MILES

NCDOT CONTACT: LAURA SUTTON, PE CPM

Prepared In the Office of:

ATKINS 1616 EAST MILLBROOK ROAD, SUITE 160
RALEIGH, NORTH CAROLINA 27609
(919) 876-6888 NCBEES #F-0326

2018 STANDARD SPECIFICATIONS

RIGHT OF WAY DATE: JULY 29, 2016

LETTING DATE: AUGUST 21, 2018

CLINTON J. MORGAN, PE
PROJECT ENGINEER

IAN BERDEAU, PE
PROJECT DESIGN ENGINEER

HYDRAULICS ENGINEER

DocuSigned by: Frank F. Fleming 7/26/2018
SEAL 20147
SIGNATURE: Frank F. Fleming P.E.

ROADWAY DESIGN ENGINEER

DocuSigned by: Clinton J. Morgan 7/25/2018
SEAL 024929
SIGNATURE: Clinton J. Morgan P.E.

