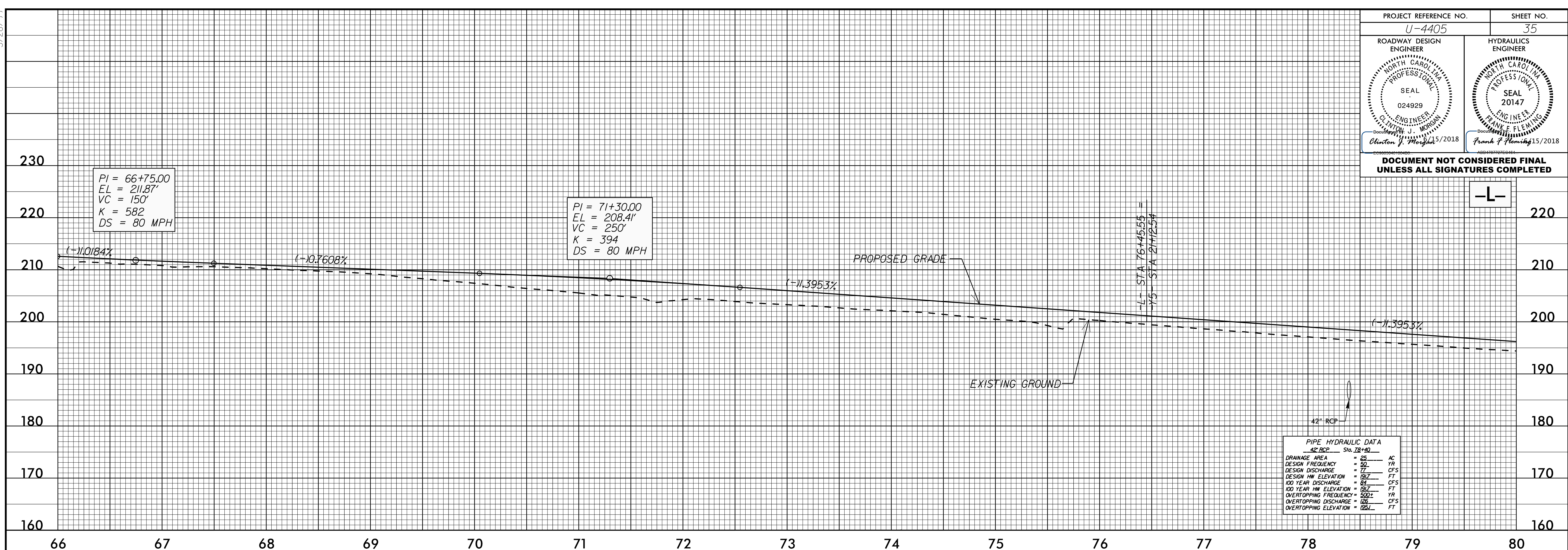


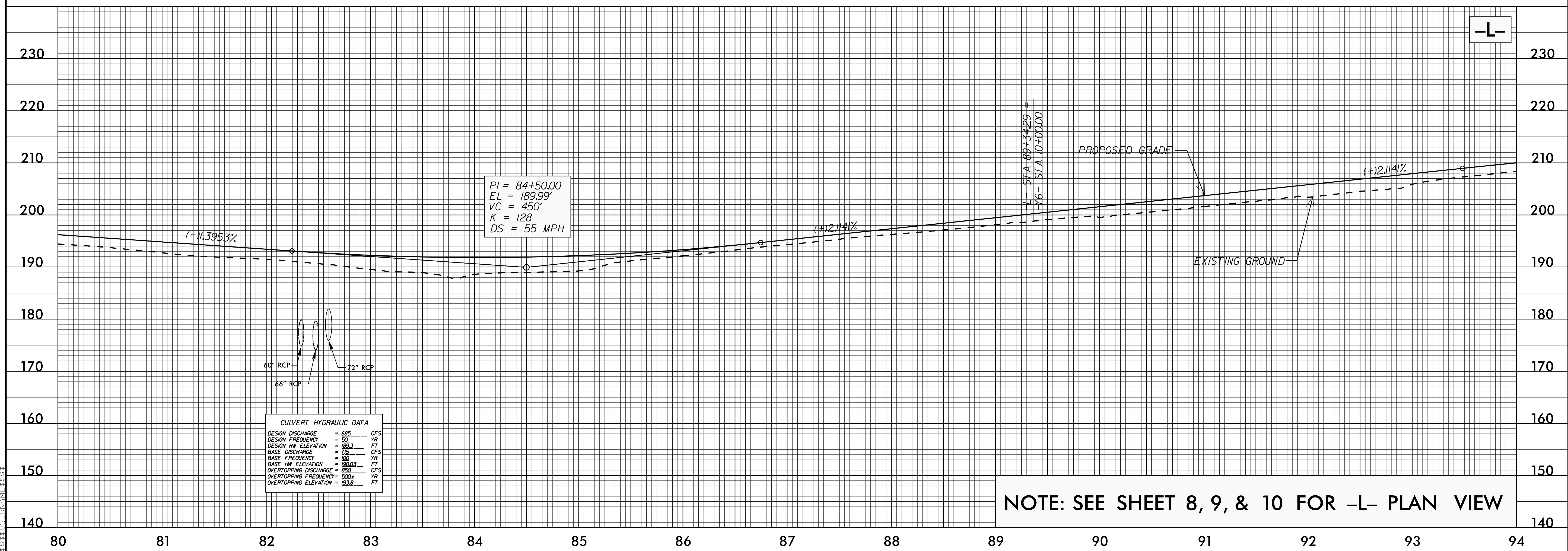
5/28/19

PROJECT REFERENCE NO. U-4405	SHEET NO. 35
ROADWAY DESIGN ENGINEER CLINTON J. MORRIS SEAL 024929 NORTH CAROLINA PROFESSIONAL ENGINEER Document 15/2018	HYDRAULICS ENGINEER FRANK F. FLEMING SEAL 20147 NORTH CAROLINA PROFESSIONAL ENGINEER Document 15/2018
DOCUMENT NOT CONSIDERED FINAL UNLESS ALL SIGNATURES COMPLETED	



PIPE HYDRAULIC DATA

42" RCP	Slo. 28+80
DRAINAGE AREA	= 22 AC
DESIGN FREQUENCY	= 50 YR
DESIGN DISCHARGE	= 77 CFS
DESIGN HW ELEVATION	= 197 FT
100 YEAR DISCHARGE	= 84 CFS
100 YEAR HW ELEVATION	= 197 FT
OVERTOPPING FREQUENCY	= 500 YR
OVERTOPPING DISCHARGE	= 125 CFS
OVERTOPPING ELEVATION	= 195 FT



CULVERT HYDRAULIC DATA

DESIGN DISCHARGE	= 685 CFS
DESIGN FREQUENCY	= 50 YR
DESIGN HW ELEVATION	= 199.3 FT
BASE DISCHARGE	= 75 CFS
BASE FREQUENCY	= 100 YR
BASE HW ELEVATION	= 190.3 FT
OVERTOPPING DISCHARGE	= 550 CFS
OVERTOPPING FREQUENCY	= 500 YR
OVERTOPPING ELEVATION	= 193.8 FT

NOTE: SEE SHEET 8, 9, & 10 FOR -L- PLAN VIEW

P:\APR-2018\1434\143405_rdy_pfl_psh.dgn