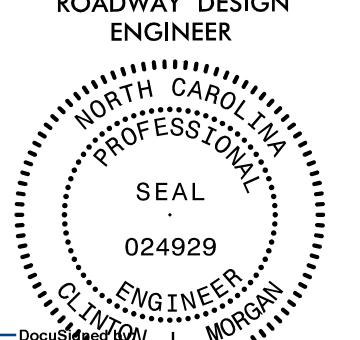
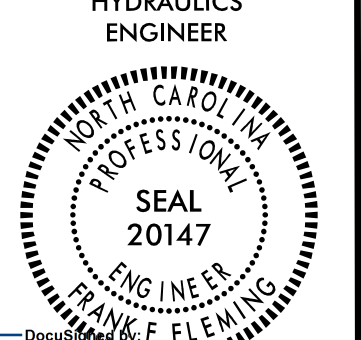
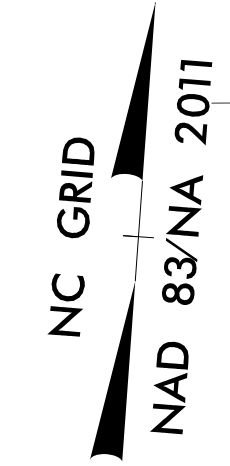


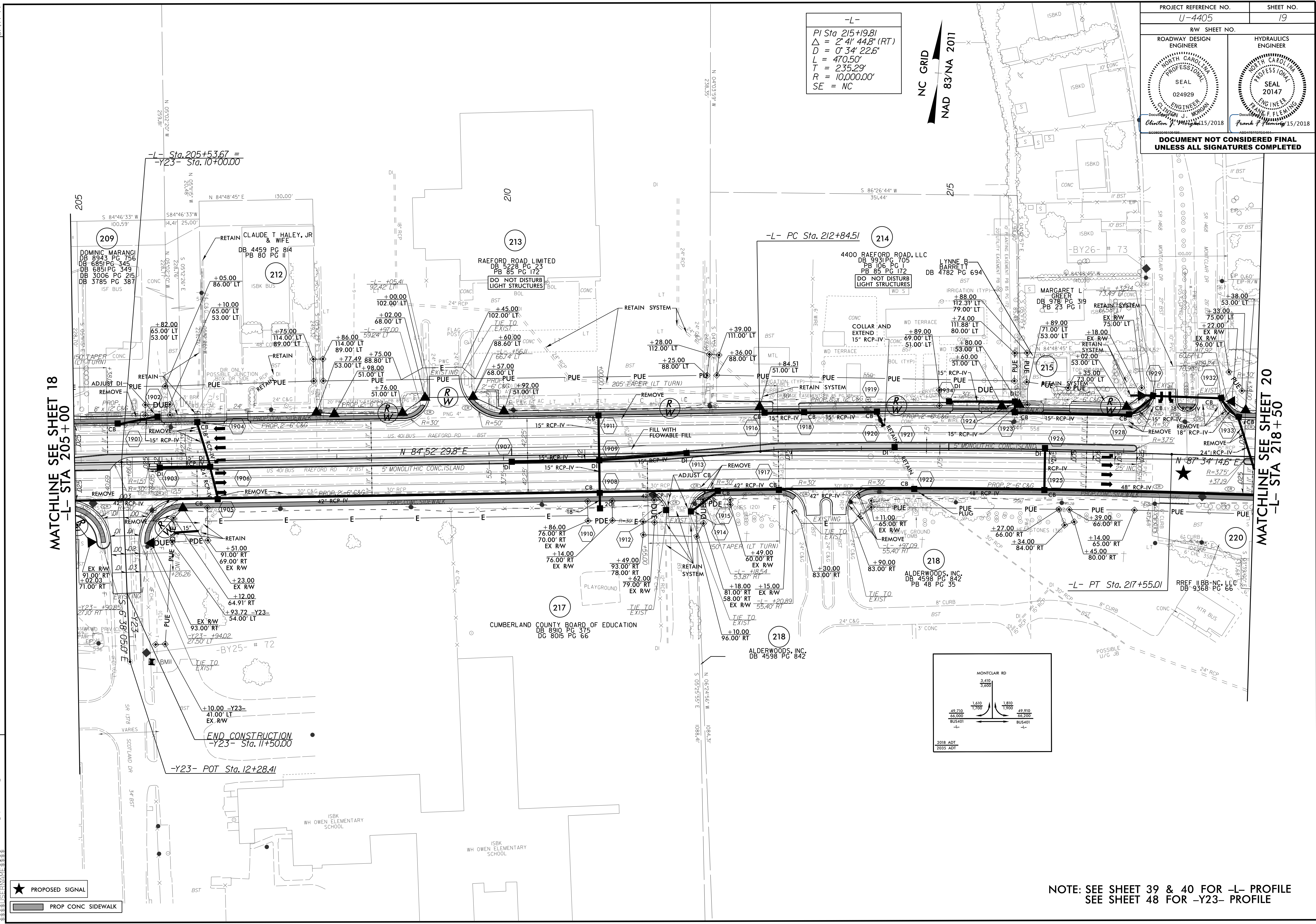
PROJECT REFERENCE NO. U-4405		SHEET NO. 19	
RW SHEET NO.		HYDRAULICS ENGINEER	
ROADWAY DESIGN ENGINEER		SEAL	
			
Clifton J. Moran 02/15/2018		Frank F. Fleming 02/15/2018	
DOCUMENT NOT CONSIDERED FINAL UNLESS ALL SIGNATURES COMPLETED			



-L-
 PI Sta. 215+19.81
 $\Delta = 2^\circ 41' 44.8" (RT)$
 $D = 0^\circ 34' 22.6"$
 $L = 470.50'$
 $T = 235.29'$
 $R = 10,000.00'$
 SE = NC



MATCHLINE SEE SHEET 18
-L- STA 205+00

MATCHLINE SEE SHEET 20
-L- STA 218+50



-  PROPOSED SIGNAL
-  PROP CONC SIDEWALK

NOTE: SEE SHEET 39 & 40 FOR -L- PROFILE
 SEE SHEET 48 FOR -Y23- PROFILE

14 JUN 2018 2:11 PM U:\4405.rdy.psh.19.dgn
 3:33:50 SERVAI\ME\G...