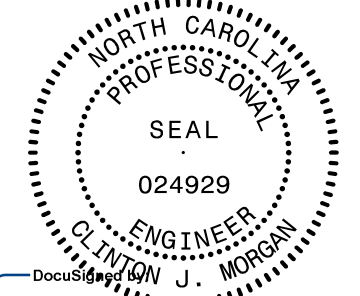
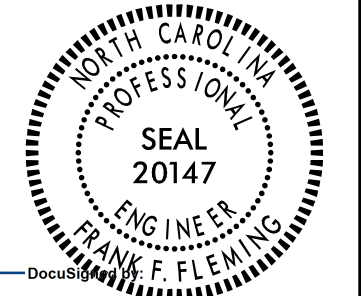
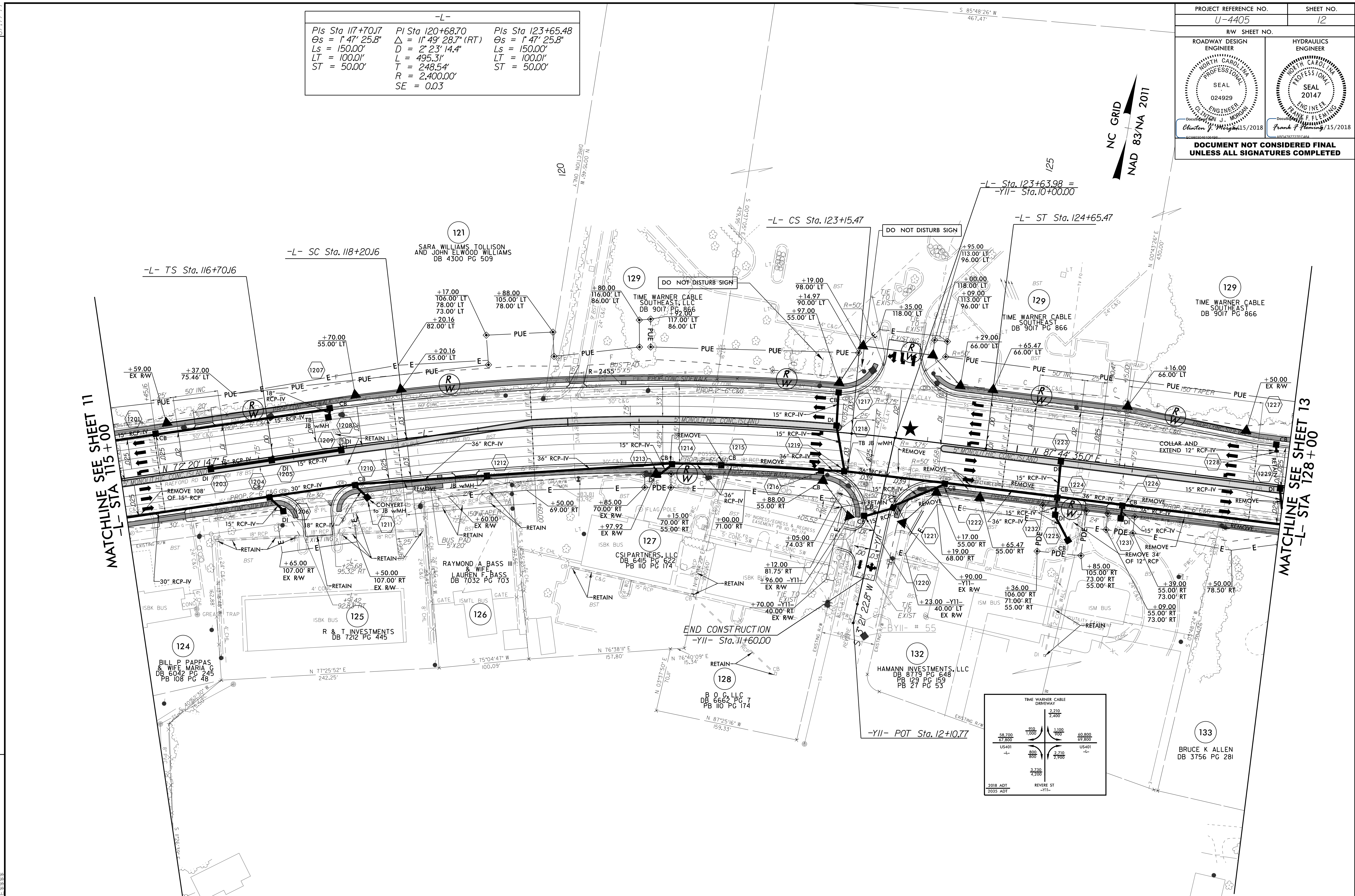
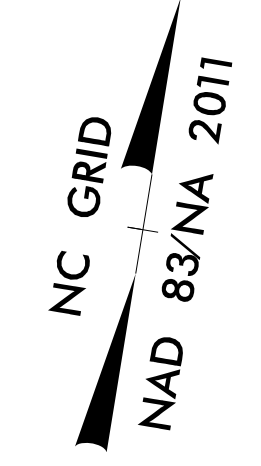


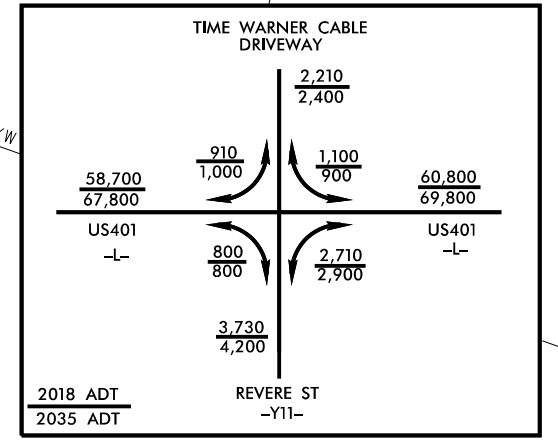
PROJECT REFERENCE NO. U-4405		SHEET NO. 12	
RW SHEET NO.		HYDRAULICS ENGINEER	
ROADWAY DESIGN ENGINEER		SEAL	
			
<small>Clinton J. Morgan 11/15/2018</small> <small>Frank F. Fleming 11/15/2018</small>		<small>Clinton J. Morgan 11/15/2018</small> <small>Frank F. Fleming 11/15/2018</small>	
DOCUMENT NOT CONSIDERED FINAL UNLESS ALL SIGNATURES COMPLETED			

-L-		
Pls Sta 117+70.17	PI Sta 120+68.70	Pls Sta 123+65.48
$\Theta_s = 1^\circ 47' 25.8''$	$\Delta = 11^\circ 49' 28.7'' (RT)$	$\Theta_s = 1^\circ 47' 25.8''$
$L_s = 150.00'$	$D = 2^\circ 23' 14.4''$	$L_s = 150.00'$
$LT = 100.01'$	$L = 495.31'$	$LT = 100.01'$
$ST = 50.00'$	$T = 248.54'$	$ST = 50.00'$
	$R = 2,400.00'$	
	$SE = 0.03$	



MATCHLINE SEE SHEET 11
-L- STA 115+00

MATCHLINE SEE SHEET 13
-L- STA 128+00



★ PROPOSED SIGNAL

▬ PROP CONC SIDEWALK

NOTE: BUS PADS WILL BE PAID FOR AS SIDEWALK
SEE SHEET 36 & 37 FOR -L- PROFILE
SEE SHEET 47 FOR -YII- PROFILE

REVISIONS

15 JUN 2018 16:37
R:\Projects\4405\rdw\pah_12.dgn
\$\$\$\$DISCLAIMER\$\$\$