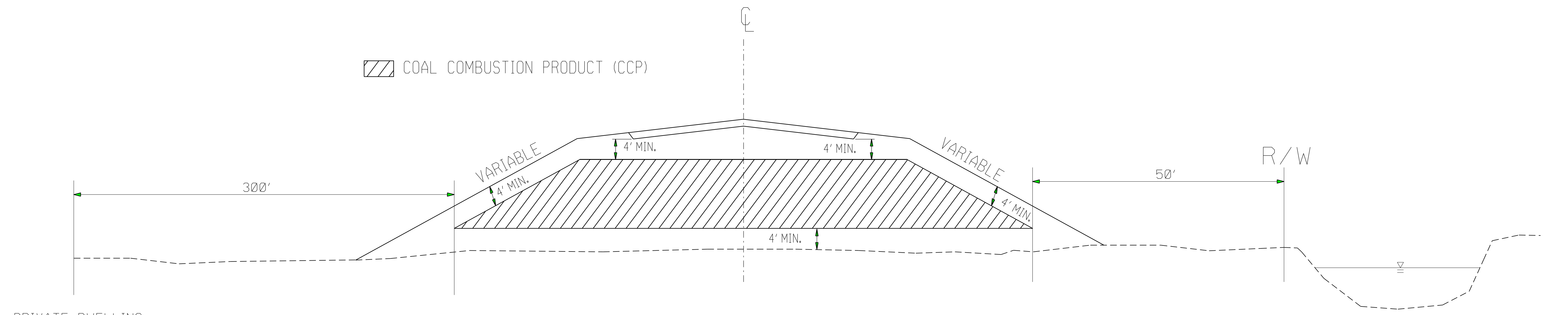


COAL COMBUSTION PRODUCT PLACEMENT



PRIVATE DWELLING OR WELL

PERENNIAL STREAM, OTHER SURFACE WATER BODY OR *WETLAND

*(OBTAIN PERMISSION FROM ARMY CORPS OF ENGINEERS)

PLACE CCP IN HATCHED AREA IN ACCORDANCE WITH THE PROJECT SPECIAL PROVISIONS

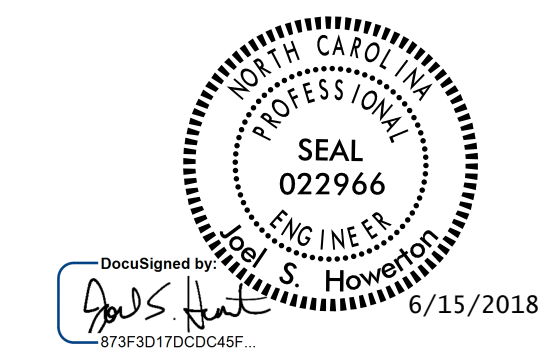
PLACE CCP A MINIMUM OF 5' ABOVE SEASONAL HIGH GROUND WATER

PLACE AT LOCATIONS AS APPROVED BY THE ENGINEER

PLACE SOIL BORROW MATERIAL ON THE OUTSIDE OF CCP AS EACH LIFT OF CCP IS PLACED

DOCUMENT NOT CONSIDERED FINAL UNLESS ALL SIGNATURES COMPLETED

CONTRACT STANDARDS AND DEVELOPMENT UNIT	
Office 919-707-6950 FAX 919-250-4119	
COAL COMBUSTION PRODUCT PLACEMENT DETAIL	
ORIGINAL BY: J.S.H.	DATE: 3/16/15
MODIFIED BY:	DATE:
CHECKED BY:	DATE:
FILE SPEC.: joel/coal combustion material detail.dgn	



11-MAY-2018 14:34 S:\Contracting\Centers\Joel\Special Details\Howerton\Coal Combustion Product Detail.dgn Ktemp AT CSD-292596