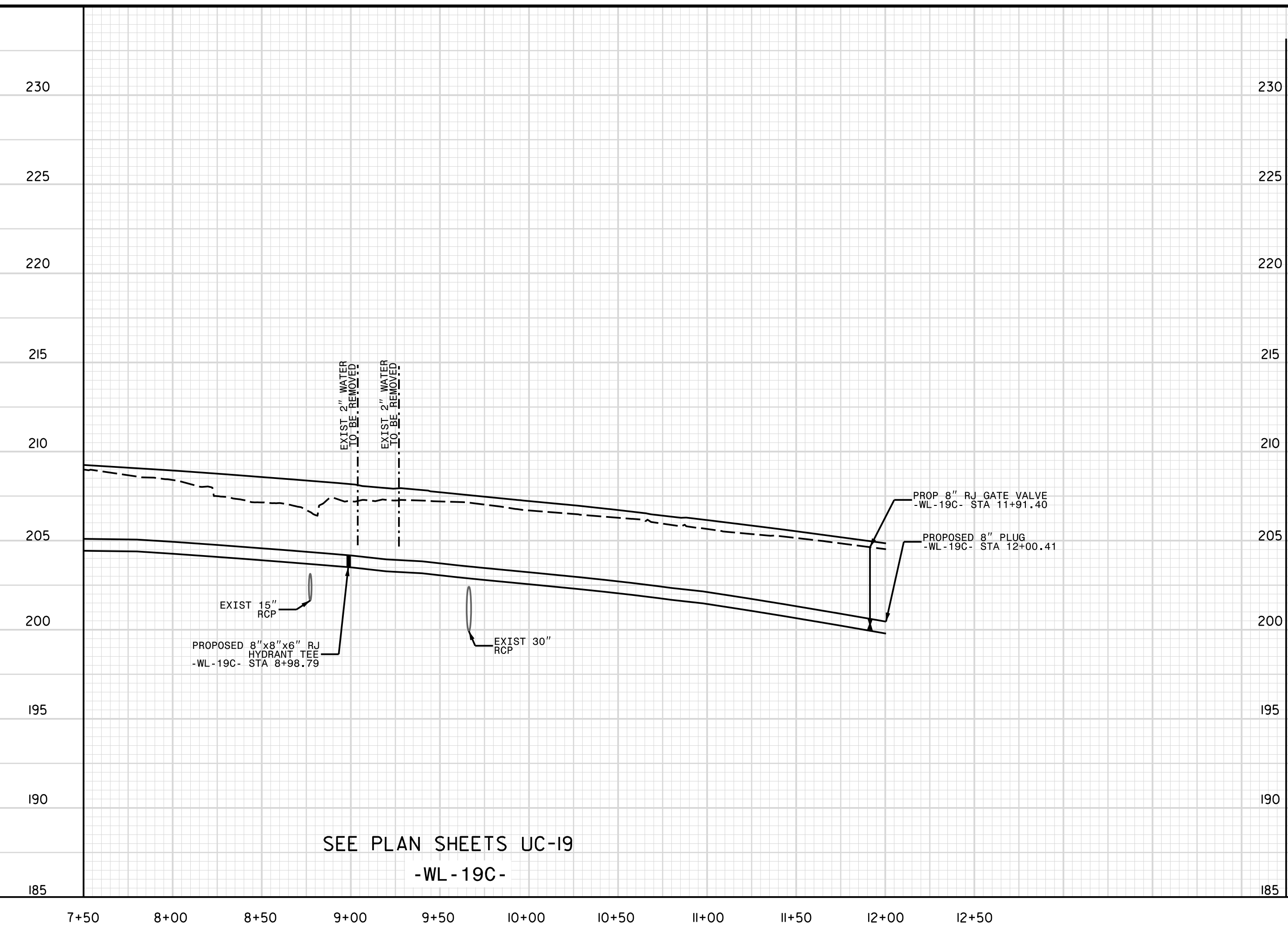


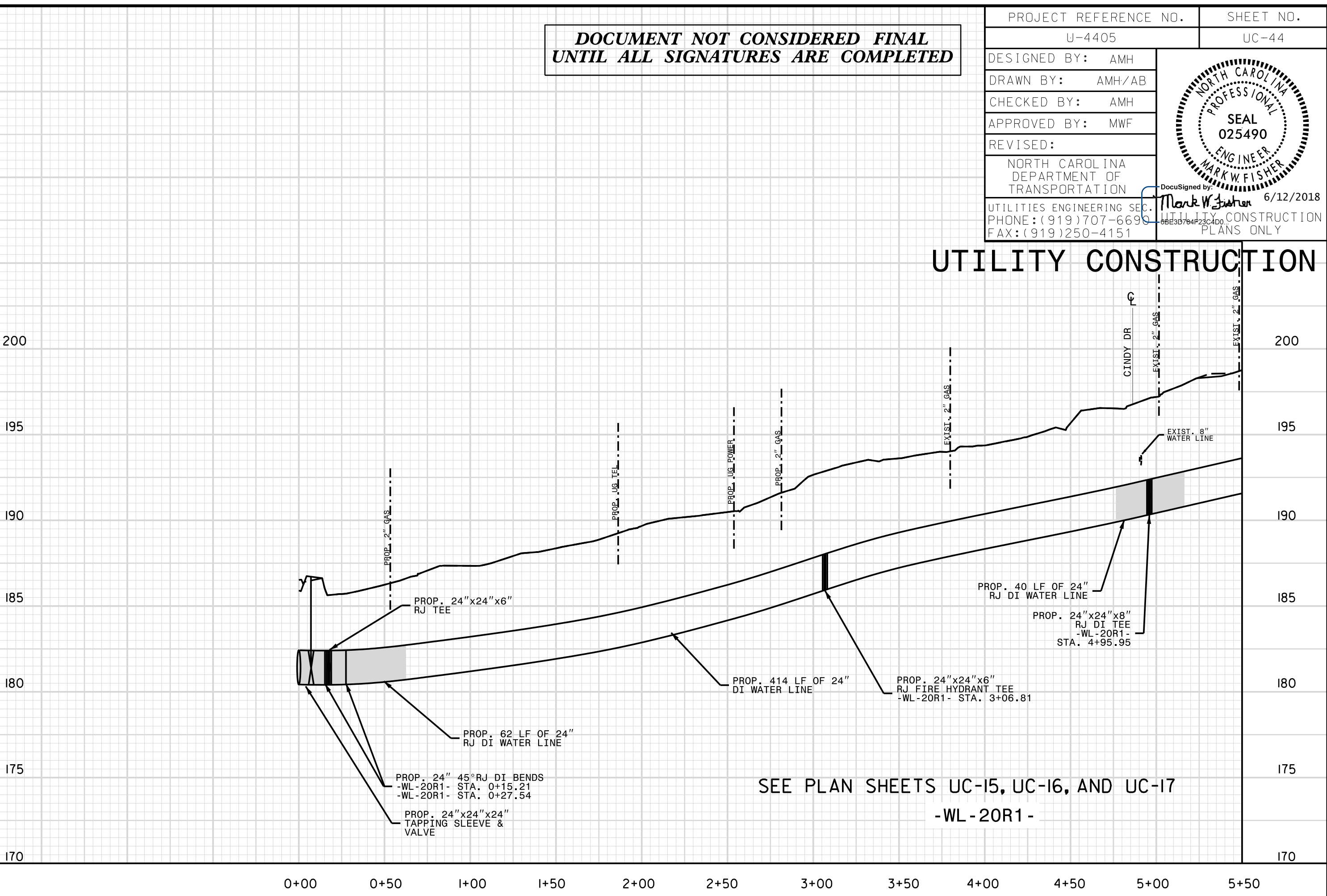
5/28/19  
 7:15 AM - 2018 14:36  
 L:\Projects\2018\05\017700RA\_Reeford Road NCDOT U 4405\CADD\NCDOT PLANS\Utilities\Engineering\UC\Proj\U4405.ut.pl\_uc44.psh.vdgn  
 Charlotteville Public Works Commission\2015017700RA\_Reeford Road NCDOT U 4405\CADD\NCDOT PLANS\Utilities\Engineering\UC\Proj\U4405.ut.pl\_uc44.psh.vdgn

**DOCUMENT NOT CONSIDERED FINAL  
UNTIL ALL SIGNATURES ARE COMPLETED**

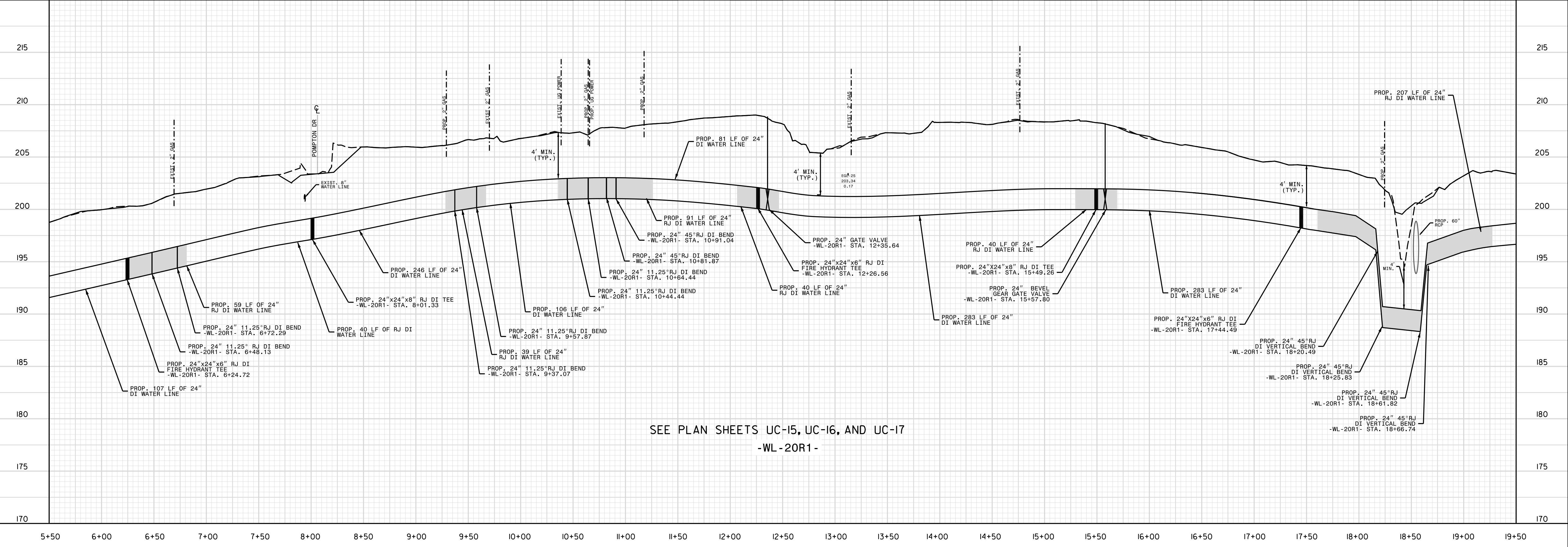
|   |        |                         |       |
|---|--------|-------------------------|-------|
| PROJECT REFERENCE NO.                       | U-4405 | SHEET NO.               | UC-44 |
| DESIGNED BY:                                | AMH    |                         |       |
| DRAWN BY:                                   | AMH/AB |                         |       |
| CHECKED BY:                                 | AMH    |                         |       |
| APPROVED BY:                                | MWF    |                         |       |
| REVISED:                                    |        |                         |       |
| NORTH CAROLINA DEPARTMENT OF TRANSPORTATION |        | 6/12/2018               |       |
| UTILITIES ENGINEERING SECTION               |        | CONSTRUCTION PLANS ONLY |       |
| PHONE: (919) 707-6699                       |        |                         |       |
| FAX: (919) 250-4151                         |        |                         |       |



SEE PLAN SHEETS UC-19  
-WL-19C-



SEE PLAN SHEETS UC-15, UC-16, AND UC-17  
-WL-20R1-



SEE PLAN SHEETS UC-15, UC-16, AND UC-17  
-WL-20R1-