

PROJECT REFERENCE NO.	SHEET NO.
U-4405	UC-32
DESIGNED BY: AMH	
DRAWN BY: AMH/AB	
CHECKED BY: AMH	
APPROVED BY: MWF	
REVISED:	
NORTH CAROLINA DEPARTMENT OF TRANSPORTATION UTILITIES ENGINEERING SECTION PHONE: (919) 707-6696 FAX: (919) 250-4151	

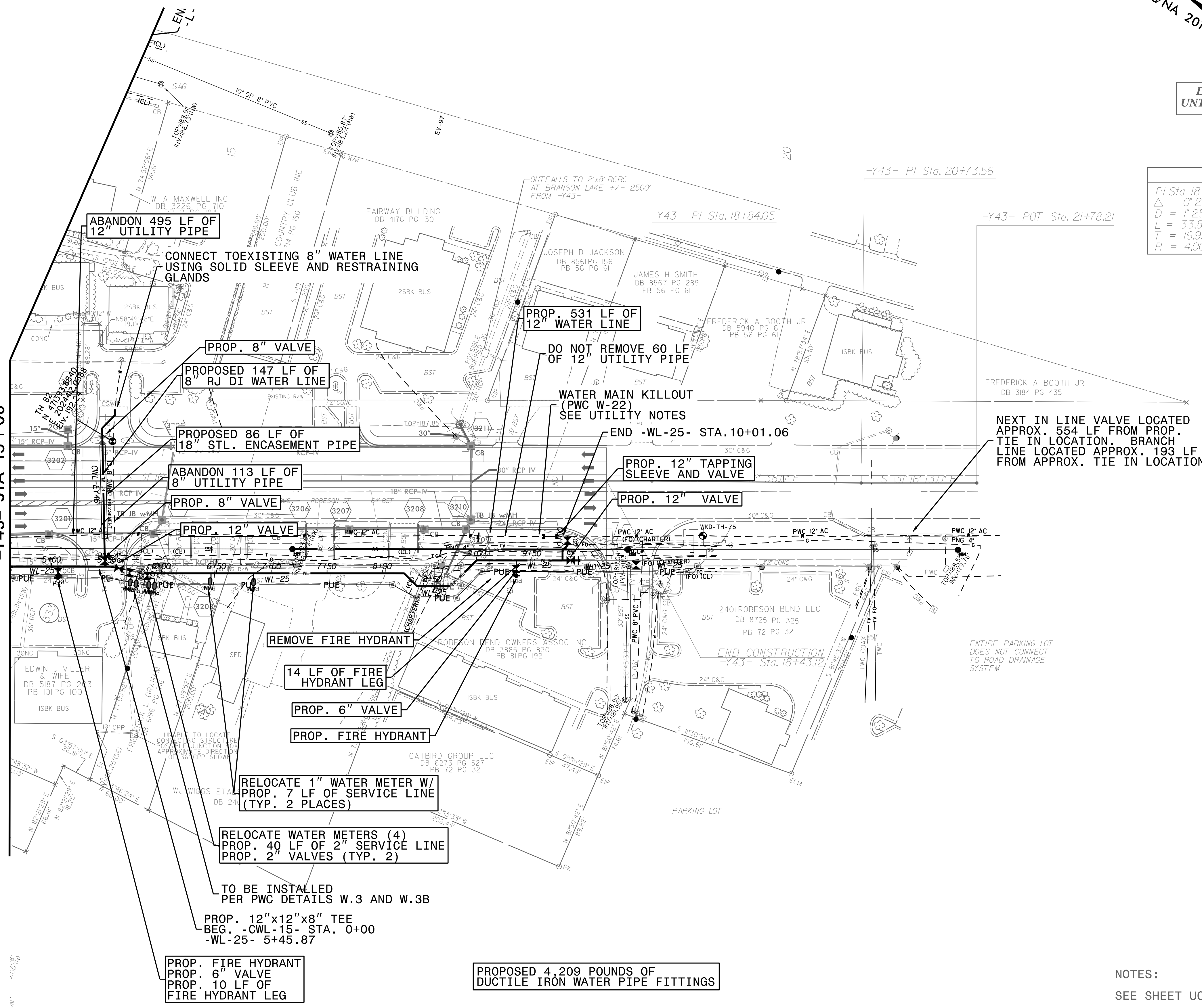
NC GRID
NAD 83/NA 2011

UTILITY CONSTRUCTION

DOCUMENT NOT CONSIDERED FINAL
UNTIL ALL SIGNATURES ARE COMPLETED

-Y43-	
PI Sta 18+97.74	PI Sta 21+77.77
$\Delta = 0' 29' 06.2" (RT)$	$\Delta = 0' 28' 56.2" (LT)$
$D = 1' 25' 56.6"$	$D = 1' 25' 56.6"$
$L = 33.86'$	$L = 33.67'$
$T = 16.93'$	$T = 16.83'$
$R = 4,000.00'$	$R = 4,000.00'$

MATCHLINE SEE SHEET UC-27
-Y43- STA 13+00



NEXT IN LINE VALVE LOCATED APPROX. 554 LF FROM PROP. TIE IN LOCATION. BRANCH LINE LOCATED APPROX. 193 LF FROM APPROX. TIE IN LOCATION

ENTIRE PARKING LOT DOES NOT CONNECT TO ROAD DRAINAGE SYSTEM

NOTES:
SEE SHEET UC-50 & UC-51 FOR -WL-25- PROFILE

3-MAY-2018 (4:41) L:\Projects\Public Works Commission\2015\017700\RA - Reeford, Road NCDOT U - 4405\CADD\NCDOT - PLANS\Utilities\Engineering\UC\Proj\U4405_ut_rdy\32_uc32_psh.dgn
 5/14/19