

PROJECT REFERENCE NO.	U-4405
SHEET NO.	UC-26
DESIGNED BY:	AMH
DRAWN BY:	AMH/AB
CHECKED BY:	AMH
APPROVED BY:	MWF
REVISED:	
NORTH CAROLINA DEPARTMENT OF TRANSPORTATION UTILITIES ENGINEERING SECTION PHONE: (919) 707-6630 FAX: (919) 250-4151	

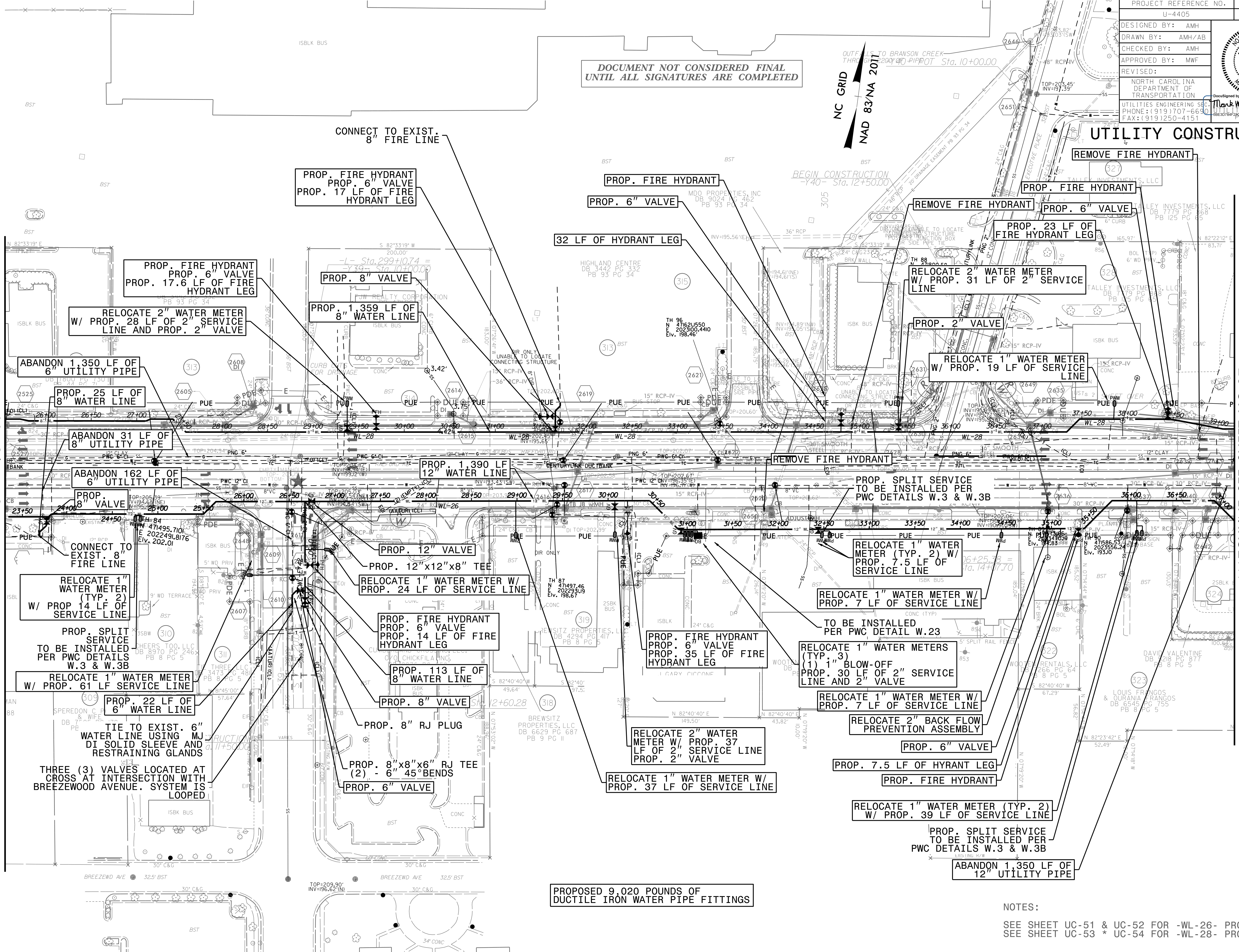
DOCUMENT NOT CONSIDERED FINAL
UNTIL ALL SIGNATURES ARE COMPLETED

NC GRID
NAD 83/NA 2011

UTILITY CONSTRUCTION

MATCHLINE SEE SHEET UC-25
-L- STA 296+00

MATCHLINE SEE SHEET UC-27
-L- STA 309+50



PROPOSED 9,020 POUNDS OF
DUCTILE IRON WATER PIPE FITTINGS

NOTES:
SEE SHEET UC-51 & UC-52 FOR -WL-26- PROFILE
SEE SHEET UC-53 * UC-54 FOR -WL-28- PROFILE

3-MAY-2018 14:52
 L:\Projects\15017700RA -Roeford Road NCDOT U-4405\CADD\NCDOT PLANS\Utilities\Engineering\UC\Proj\U4405_ut_rdj\26_uc26.pst.dwg
 5/14/2018