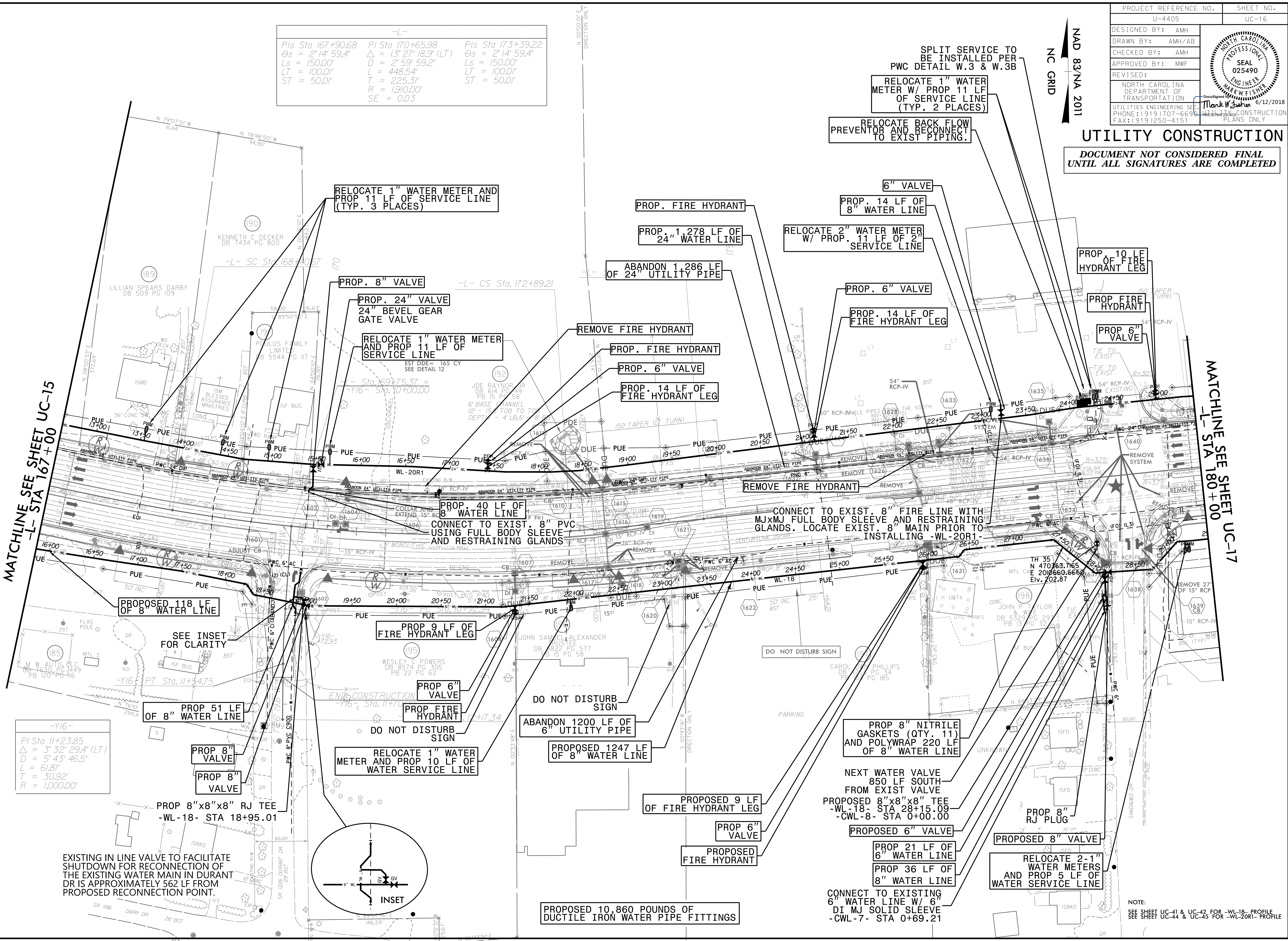


PROJECT REFERENCE NO.	SHEET NO.
U-4405	UC-16
DESIGNED BY: AMH	
DRAWN BY: AMH/AE	
CHECKED BY: AMH	
APPROVED BY: MWF	
REVISED:	
NORTH CAROLINA DEPARTMENT OF TRANSPORTATION UTILITIES ENGINEERING SECTION PHONE: (919) 707-6693 FAX: (919) 250-4151	

**UTILITY CONSTRUCTION**  
 DOCUMENT NOT CONSIDERED FINAL  
 UNTIL ALL SIGNATURES ARE COMPLETED

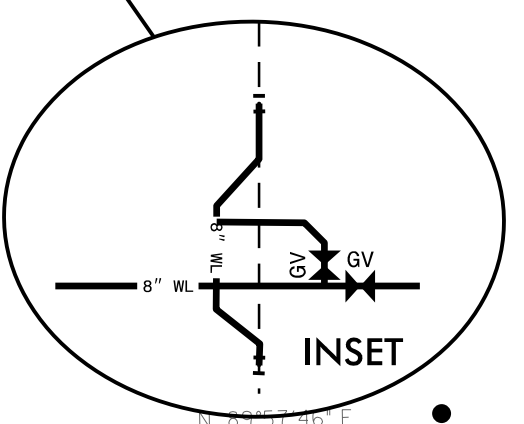
-L-  
 PIs Sta 167+90.68 PI Sta 170+65.98 PIs Sta 173+39.22  
 $\Delta s = 2' 14" 59.4"$   $\Delta = 13' 27" 18.9" (LT)$   $\Delta s = 2' 14" 59.4"$   
 $L_s = 150.00'$   $D = 2' 59" 59.2"$   $L_s = 150.00'$   
 $LT = 100.01'$   $L = 448.54'$   $LT = 100.01'$   
 $ST = 50.01'$   $T = 225.31'$   $ST = 50.01'$   
 $R = 1,910.00'$   
 $SE = 0.03$



MATCHLINE SEE SHEET UC-15  
 -L- STA 167+00

MATCHLINE SEE SHEET UC-17  
 -L- STA 180+00

-Y16-  
 PI Sta 11+23.85  
 $\Delta = 3' 32" 29.4" (LT)$   
 $D = 5' 43" 46.5"$   
 $L = 61.81'$   
 $T = 30.92'$   
 $R = 1,000.00'$



EXISTING IN LINE VALVE TO FACILITATE SHUTDOWN FOR RECONNECTION OF THE EXISTING WATER MAIN IN DURANT DR IS APPROXIMATELY 562 LF FROM PROPOSED RECONNECTION POINT.

NOTE:  
 SEE SHEET UC-41 & UC-42 FOR -WL-18- PROFILE  
 SEE SHEET UC-44 & UC-45 FOR -WL-20R1- PROFILE

3-MAY-2018 14:47 L:\Projects\Fayetteville Public Works Commission\2015\017700PRA Reelford Road NCDOT U-4405\CADD\NCDOT PLANS\Utilities\Engineering\UC\Proj\Ud4405\_ut\_rdlj16.uc16.psh.dgn 5/14/2018