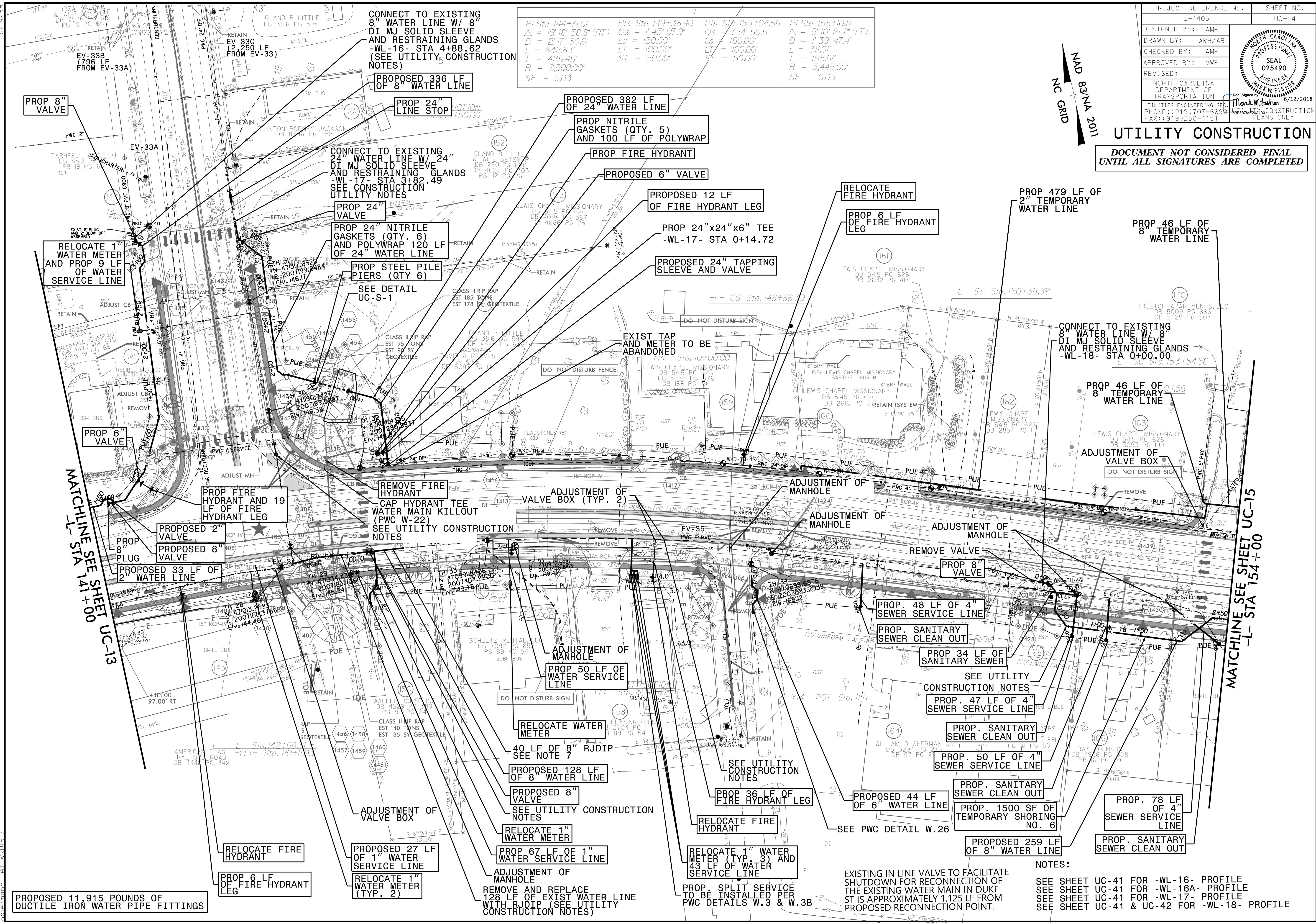
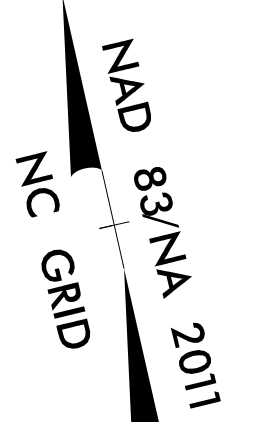


PROJECT REFERENCE NO.	SHEET NO.
U-4405	UC-14
DESIGNED BY: AMH	
DRAWN BY: AMH/AB	
CHECKED BY: AMH	
APPROVED BY: MWF	
REVISED:	
NORTH CAROLINA DEPARTMENT OF TRANSPORTATION UTILITIES ENGINEERING SECTION PHONE: (919) 707-6696 FAX: (919) 250-4151	

UTILITY CONSTRUCTION
 DOCUMENT NOT CONSIDERED FINAL
 UNTIL ALL SIGNATURES ARE COMPLETED

$PI\ Sta\ 144+71.01$ $\Delta = 19'18"58.8" (RT)$ $D = 2'17"30.6"$ $L = 842.83'$ $T = 425.45'$ $R = 2,500.00'$ $SE = 0.03$	$Pls\ Sta\ 149+38.40$ $\Delta s = 1'43"07.9"$ $Ls = 150.00'$ $LT = 100.00'$ $ST = 50.00'$	$Pls\ Sta\ 153+04.56$ $\Delta s = 1'14"50.5"$ $Ls = 150.00'$ $LT = 100.00'$ $ST = 50.00'$	$Pl\ Sta\ 155+10.17$ $\Delta = 5'10"21.2" (LT)$ $D = 1'39"47.4"$ $L = 311.01'$ $T = 155.61'$ $R = 3,445.00'$ $SE = 0.03$
---	---	---	--



PROPOSED 11,915 POUNDS OF DUCTILE IRON WATER PIPE FITTINGS

EXISTING IN LINE VALVE TO FACILITATE SHUTDOWN FOR RECONNECTION OF THE EXISTING WATER MAIN IN DUKE ST IS APPROXIMATELY 1,125 LF FROM PROPOSED RECONNECTION POINT.

NOTES:
 SEE SHEET UC-41 FOR -WL-16- PROFILE
 SEE SHEET UC-41 FOR -WL-16A- PROFILE
 SEE SHEET UC-41 FOR -WL-17- PROFILE
 SEE SHEET UC-41 & UC-42 FOR -WL-18- PROFILE

05-JUN-2018 16:33 L:\Projects\15015017700RA Raeford Road NCDOT U-4405\CADD\NCDOT PLANS\Utilities\Engineering\UC\Proj\U4405-ud\j14-uc14-1.psh.dgn

MATCHLINE SEE SHEET UC-13
 -L- STA 141+00

MATCHLINE SEE SHEET UC-15
 -L- STA 154+00