

5/14/99
3-MAY-2018 14:43
L:\Projects\Public Works\Commission\2015\017700RA - Roeford Road NCDOT U-4405\CADD\NCDOT - PLANS\Utilities\Engineering\UC\Proj\U4405_uct12.uct12.psh.dgn
A:\WORK\17700RA - Roeford Road NCDOT U-4405\CADD\NCDOT - PLANS\Utilities\Engineering\UC\Proj\U4405_uct12.uct12.psh.dgn

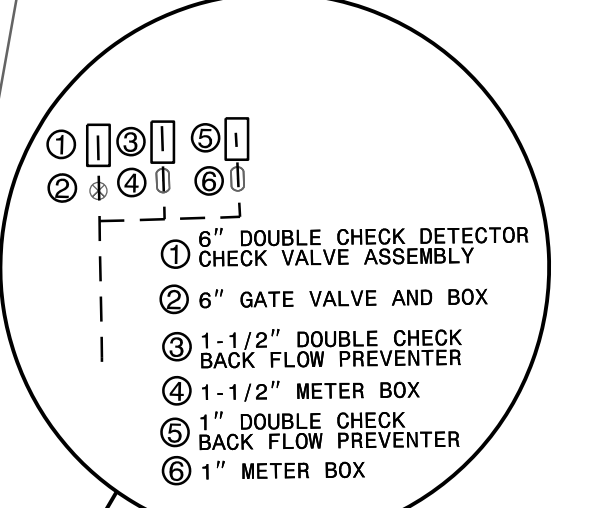
REMOVE VALVE AND MIN. OF 20 FEET OF PIPE AFTER WL-15 IS OPERABLE. CONNECT TO EXISTING 8" WATER LINE W/ 8" DI MJ SOLID SLEEVE AND RESTRAINING GLANDS AND LAY BACK MIN. OF 20 FEET OF RJ PIPE -WL-15- STA 1+72.31

DOCUMENT NOT CONSIDERED FINAL UNTIL ALL SIGNATURES ARE COMPLETED

PROJECT REFERENCE NO.	SHEET NO.
U-4405	UC-12
DESIGNED BY: AMH	
DRAWN BY: AMH/AB	
CHECKED BY: AMH	
APPROVED BY: MWF	
REVISED:	
NORTH CAROLINA DEPARTMENT OF TRANSPORTATION	
UTILITIES ENGINEERING SECTION	
PHONE: (919) 707-6699	FAX: (919) 250-4151
6/12/2018	
CONSTRUCTION PLANS ONLY	

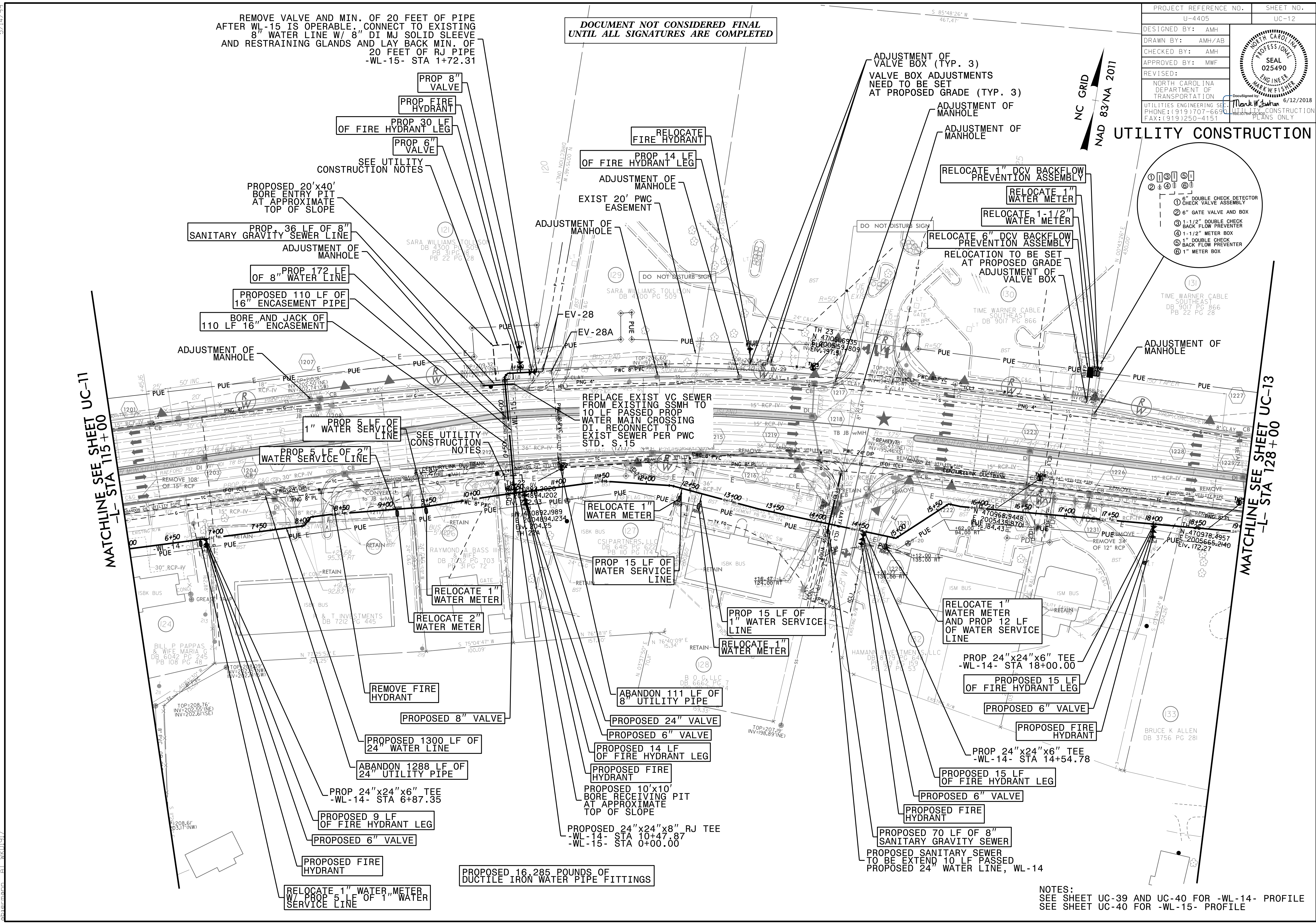


UTILITY CONSTRUCTION



MATCHLINE SEE SHEET UC-11
-L- STA 115+00

MATCHLINE SEE SHEET UC-13
-L- STA 128+00



NOTES:
SEE SHEET UC-39 AND UC-40 FOR -WL-14- PROFILE
SEE SHEET UC-40 FOR -WL-15- PROFILE