

PROJECT REFERENCE NO.	SHEET NO.
U-4405	UC-11
DESIGNED BY: AMH	
DRAWN BY: AMH/AE	
CHECKED BY: AMH	
APPROVED BY: MWF	
REVISED:	
NORTH CAROLINA DEPARTMENT OF TRANSPORTATION UTILITIES ENGINEERING SECTION PHONE: (919) 707-6690 FAX: (919) 250-4151	

# UTILITY CONSTRUCTION

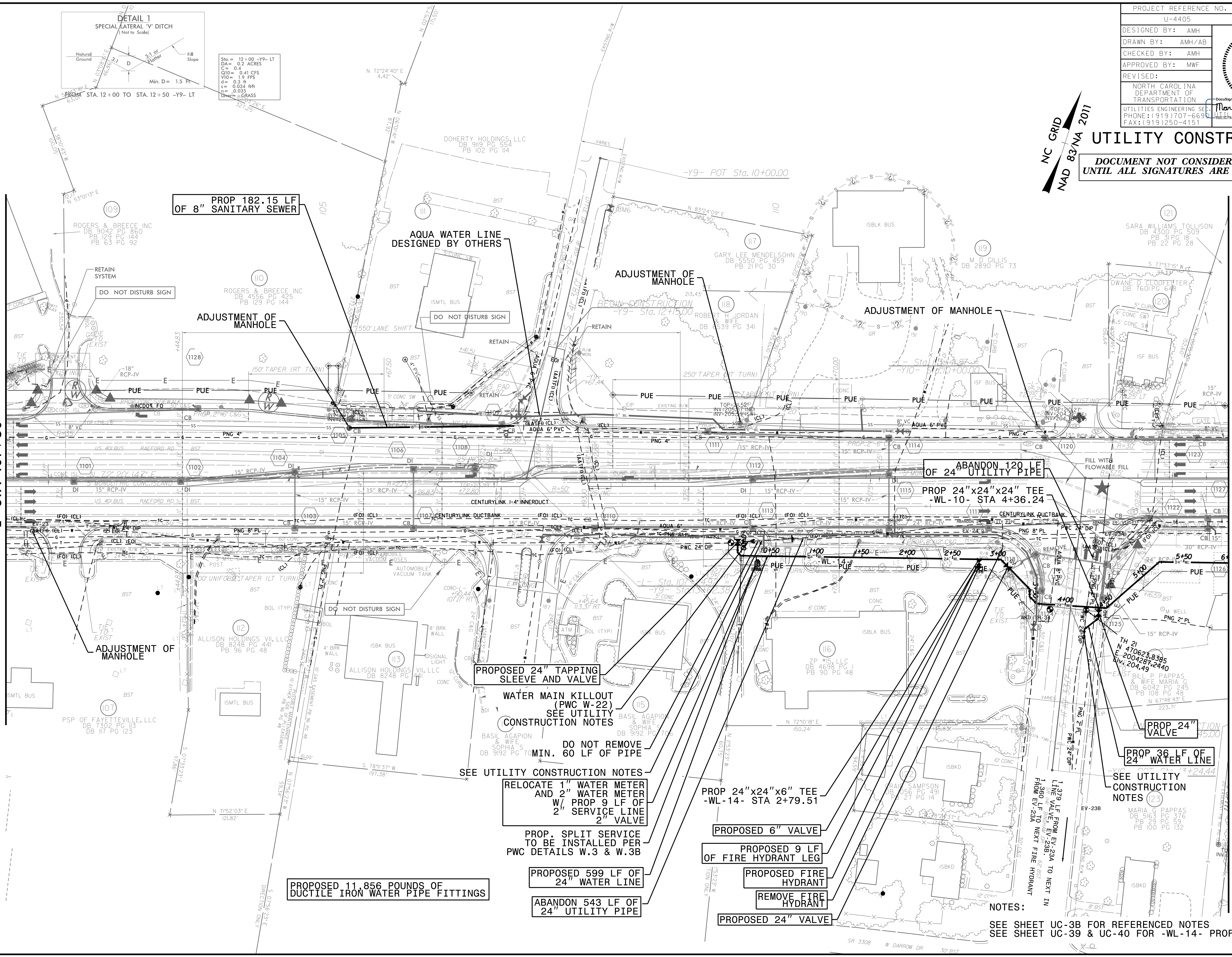
**DOCUMENT NOT CONSIDERED FINAL UNTIL ALL SIGNATURES ARE COMPLETED**

NC GRID  
NAD 83  
NA 2011

3-MAY-2018 14:42  
 L:\Projects\Fayetteville Public Works Commission\2015\017700PRA Raeford Road NCDOT U 4405\CADD\NCDOT PLANS\Utilities\Engineering\UC\Proj\U4405\_ut\_rdlj1.uc11\_psh.dgn  
 5/14/2018

MATCHLINE SEE SHEET UC-10  
-L- STA 101+50

MATCHLINE SEE SHEET UC-12  
-L- STA 115+00



**PROPOSED 24" TAPPING SLEEVE AND VALVE**

**WATER MAIN KILLOUT (PWC W-22) SEE UTILITY CONSTRUCTION NOTES**

**DO NOT REMOVE 60 LF OF PIPE**

**SEE UTILITY CONSTRUCTION NOTES**

**RELOCATE 1" WATER METER AND 2" WATER METER W/ PROP 9 LF OF 2" SERVICE LINE 2" VALVE**

**PROP. SPLIT SERVICE TO BE INSTALLED PER PWC DETAILS W.3 & W.3B**

**PROPOSED 11,856 POUNDS OF DUCTILE IRON WATER PIPE FITTINGS**

**PROPOSED 599 LF OF 24" WATER LINE**

**ABANDON 543 LF OF 24" UTILITY PIPE**

**PROP 24"x24"x6" TEE -WL-14- STA 2+79.51**

**PROPOSED 6" VALVE**

**PROPOSED 9 LF OF FIRE HYDRANT LEG**

**PROPOSED FIRE HYDRANT**

**REMOVE FIRE HYDRANT**

**PROPOSED 24" VALVE**

**ABANDON 120" OF 24" UTILITY PIPE**

**PROP 24"x24"x24" TEE -WL-10- STA 4+36.24**

**PROP 24" VALVE**

**PROP 36 LF OF 24" WATER LINE**

**SEE UTILITY CONSTRUCTION NOTES (23)**

**NOTES:**  
SEE SHEET UC-3B FOR REFERENCED NOTES  
SEE SHEET UC-39 & UC-40 FOR -WL-14- PROFILE