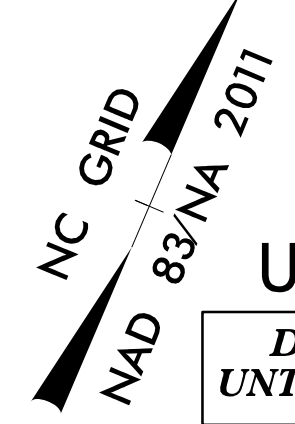
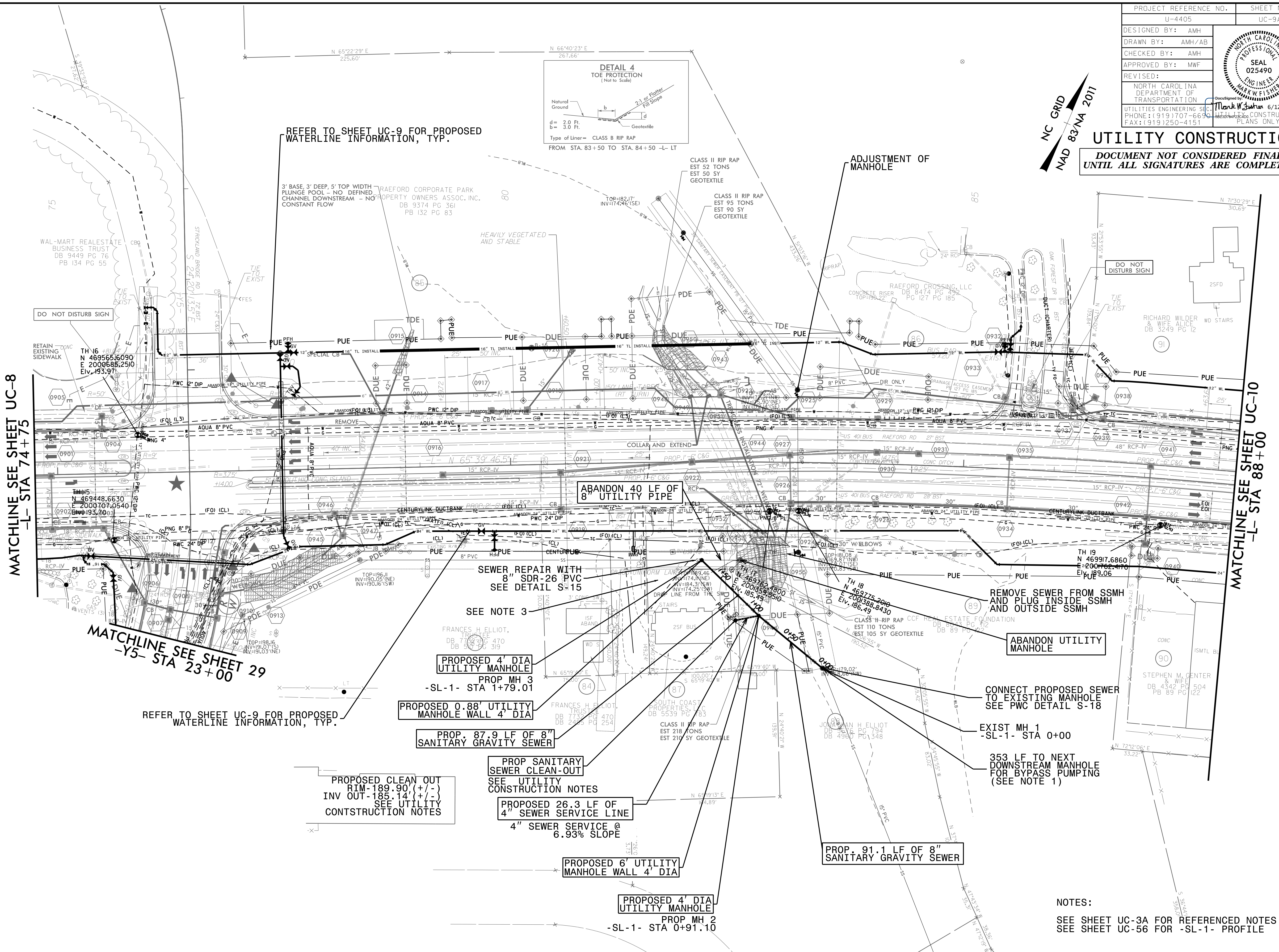
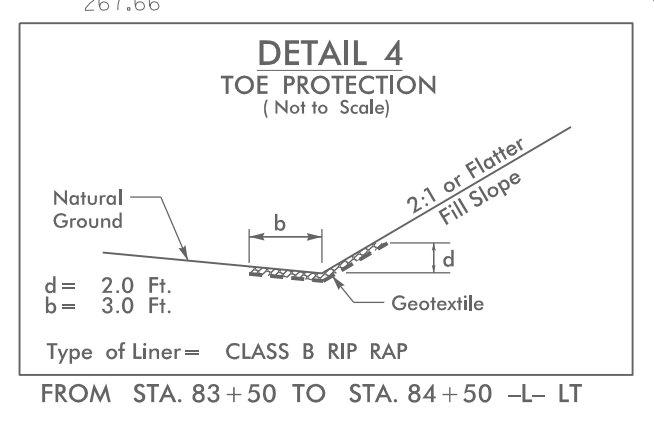


PROJECT REFERENCE NO.	U-4405	SHEET NO.	UC-9A
DESIGNED BY:	AMH		
DRAWN BY:	AMH/AB		
CHECKED BY:	AMH		
APPROVED BY:	MWF		
REVISED:		NORTH CAROLINA DEPARTMENT OF TRANSPORTATION UTILITIES ENGINEERING SECTION PHONE: (919) 707-6690 FAX: (919) 250-4151	



UTILITY CONSTRUCTION
 DOCUMENT NOT CONSIDERED FINAL
 UNTIL ALL SIGNATURES ARE COMPLETED



MATCHLINE SEE SHEET UC-8
-L- STA 74 + 75

MATCHLINE SEE SHEET UC-10
-L- STA 88 + 00

REFER TO SHEET UC-9 FOR PROPOSED WATERLINE INFORMATION, TYP.

REFER TO SHEET UC-9 FOR PROPOSED WATERLINE INFORMATION, TYP.

MATCHLINE SEE SHEET 29
-Y5- STA 23 + 00

NOTES:
 SEE SHEET UC-3A FOR REFERENCED NOTES
 SEE SHEET UC-56 FOR -SL-1- PROFILE

5/14/09
 21-MAY-2016 14:41
 C:\p\Projects\Public Works Commission\2015017700RA - Reelford Road NCDOT U-4405\CADD\NCDOT PLANS\Utilities\Engineering\UC\Proc\U4405_ut_rdy_9_uc09A_psh.dgn
 Mark W. Walker
 PROFESSIONAL ENGINEER
 SEAL 025490
 NORTH CAROLINA DEPARTMENT OF TRANSPORTATION
 UTILITIES ENGINEERING SECTION
 PHONE: (919) 707-6690
 FAX: (919) 250-4151