


07-JUN-2018 13:48  
L:\Projects\Public Works\Commission\2015\01700RA - Roeford Road NCDOT U-4405\CADD\NCDOT PLANS\Utilities\Engineering\UC\Proj\U4405\_uc06\_uc96\_psh.dgn  
5/14/2018

DOCUMENT NOT CONSIDERED FINAL  
UNTIL ALL SIGNATURES ARE COMPLETED

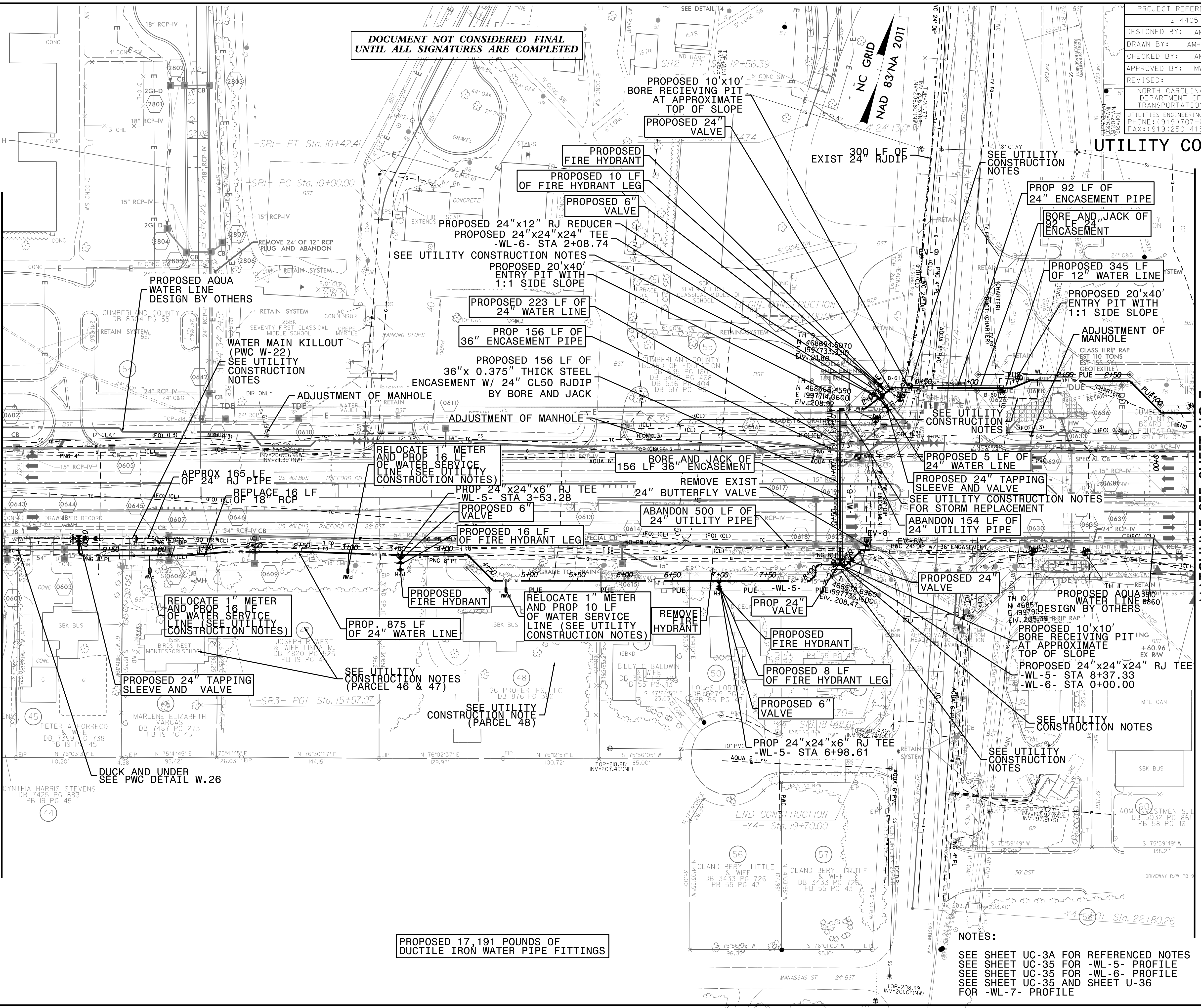
PROJECT REFERENCE NO.	U-4405
SHEET NO.	UC-6
DESIGNED BY:	AMH
DRAWN BY:	AMH/AB
CHECKED BY:	AMH
APPROVED BY:	MWF
REVISED:	
NORTH CAROLINA DEPARTMENT OF TRANSPORTATION	
UTILITIES ENGINEERING SECTION	
PHONE: (919) 707-6696	FAX: (919) 250-4151



6/12/2018  
Mark W. Fisher  
PLANS ONLY

MATCHLINE SEE SHEET UC-5  
-L- STA 35+50

MATCHLINE SEE SHEET UC-7  
-L- STA 48+00



PROPOSED 17,191 POUNDS OF  
DUCTILE IRON WATER PIPE FITTINGS

NOTES:  
SEE SHEET UC-3A FOR REFERENCED NOTES  
SEE SHEET UC-35 FOR -WL-5- PROFILE  
SEE SHEET UC-35 FOR -WL-6- PROFILE  
SEE SHEET UC-35 AND SHEET U-36  
FOR -WL-7- PROFILE