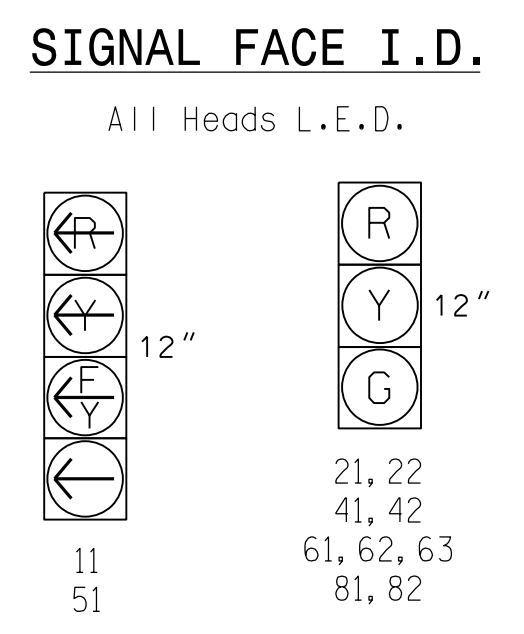


SIGNAL FACE	PHASE					
	01+5	01+6	02+5	02+6	04+8	FUTURE
11	←	←	←	←	←	←
21, 22	R	R	G	G	R	Y
41, 42	R	R	R	R	G	R
51	←	←	←	←	←	←
61, 62, 63	R	G	R	G	R	Y
81, 82	R	R	R	R	G	R

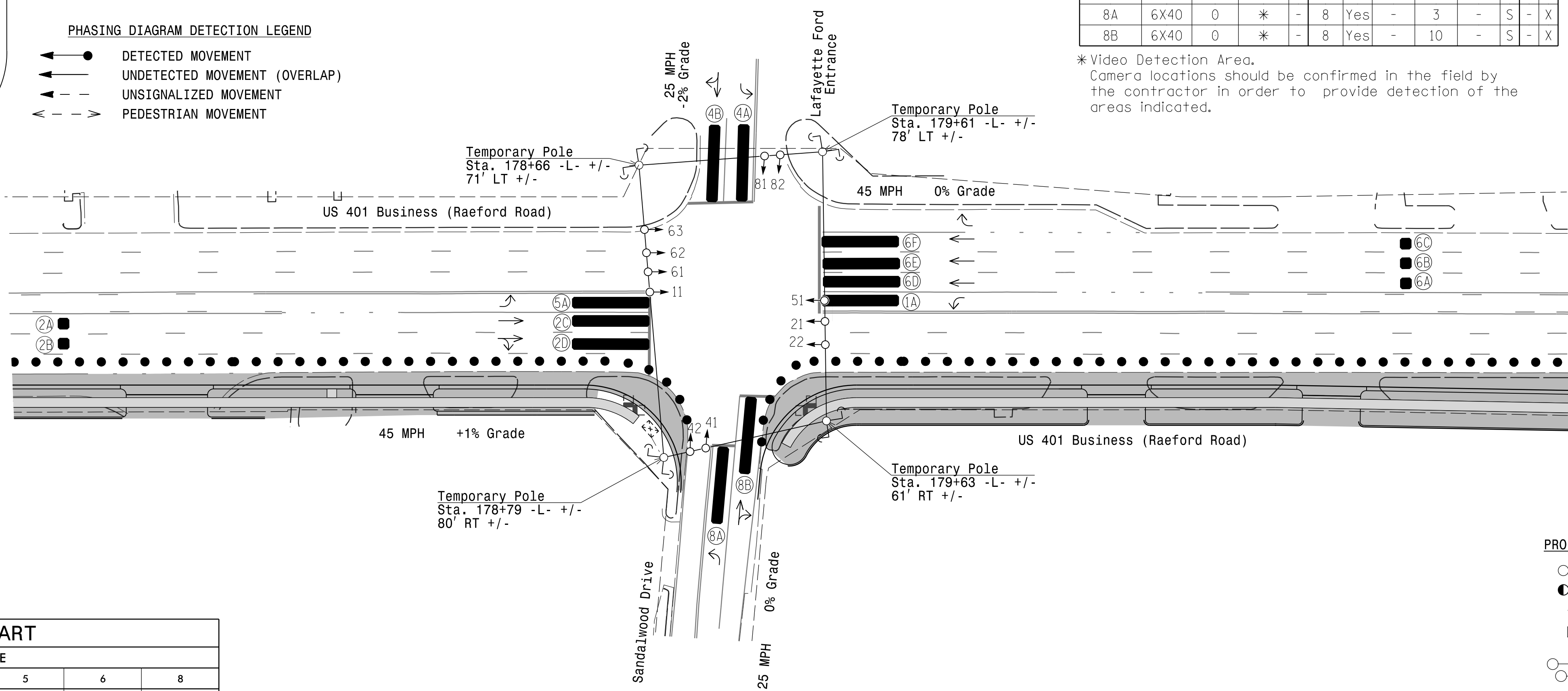
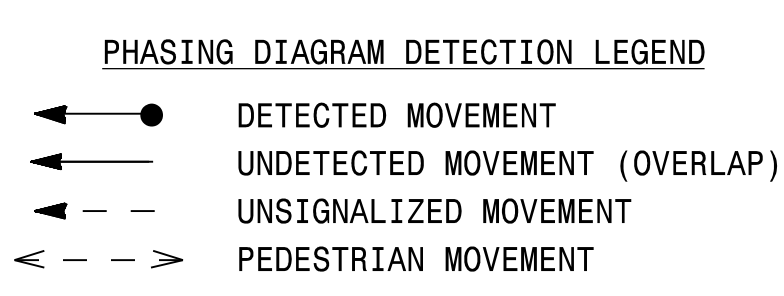


ASC/3 DETECTOR INSTALLATION CHART												
LOOP	SIZE (FT)	DISTANCE FROM STOPBAR (FT)	TURNS	NEW LOOP	PROGRAMMING							
					PHASE	CALLING	EXTEND TIME	DELAY TIME	USE ADDED INITIAL	TYPE	SYSTEM LOOP	NEW CARD
1A	6X40	0	*	-	1	Yes	-	15	-	S	-	X
2A	6X6	300	*	-	2	Yes	-	-	-	N	-	X
2B	6X6	300	*	-	2	Yes	-	-	-	N	-	X
2C	6X40	0	*	-	2	Yes	2.0	5	-	G	-	X
2D	6X40	0	*	-	2	Yes	2.0	5	-	G	-	X
4A	6X40	0	*	-	4	Yes	-	3	-	S	-	X
4B	6X40	0	*	-	4	Yes	-	10	-	S	-	X
5A	6X40	0	*	-	5	Yes	-	15	-	S	-	X
6A	6X6	300	*	-	6	Yes	-	-	-	N	-	X
6B	6X6	300	*	-	6	Yes	-	-	-	N	-	X
6C	6X6	300	*	-	6	Yes	-	-	-	N	-	X
6D	6X40	0	*	-	6	Yes	2.0	5	-	G	-	X
6E	6X40	0	*	-	6	Yes	2.0	5	-	G	-	X
6F	6X40	0	*	-	6	Yes	2.0	5	-	G	-	X
8A	6X40	0	*	-	8	Yes	-	3	-	S	-	X
8B	6X40	0	*	-	8	Yes	-	10	-	S	-	X

5 Phase Fully Actuated Fayetteville Signal System

NOTES

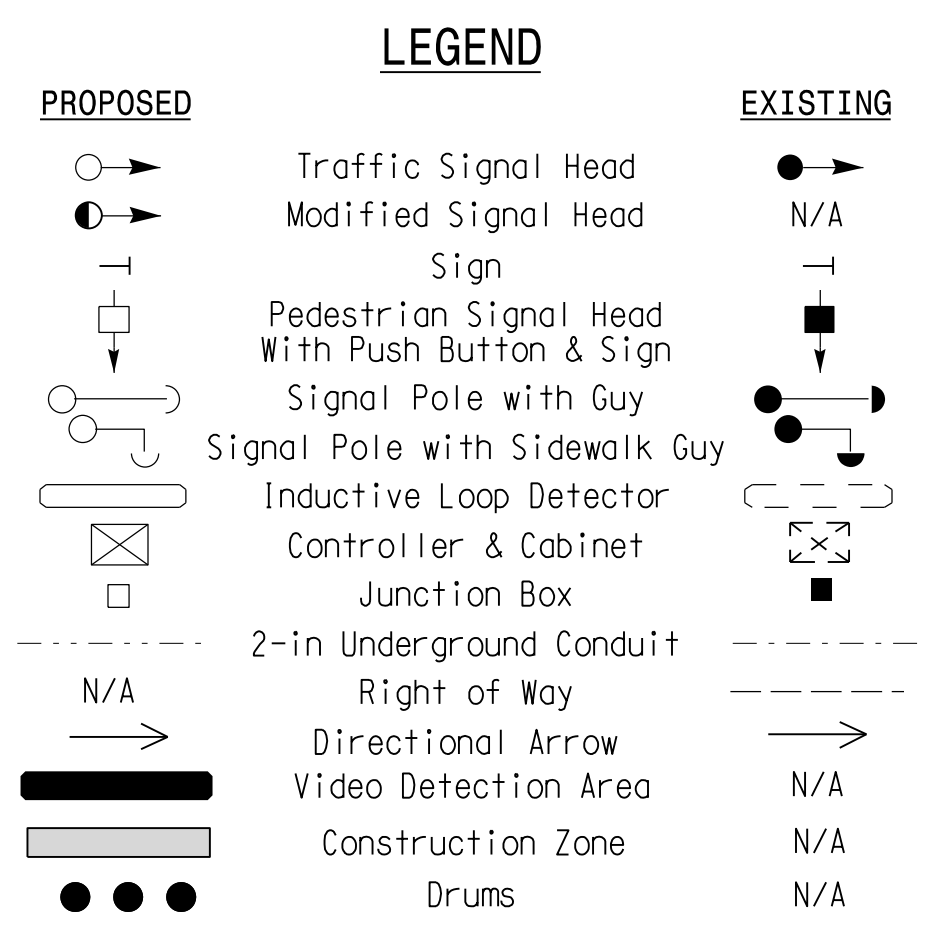
- Refer to "Roadway Standard Drawings NCDOT" dated January 2018 and "Standard Specifications for Roads and Structures" dated January 2018.
- Do not program signal for late night flashing operation unless otherwise directed by the Engineer.
- Phase 1 and/or phase 5 may be lagged.
- Set all detector units to presence mode.
- Locate new cabinet foundation so as not to obstruct sight distance of vehicles turning right on red. Relocate existing cabinet and controller onto new foundation.
- The Division (City) Traffic Engineer will determine the hours of use for each phasing plan.
- Maximum times shown in timing chart are for free-run operation only. Coordinated signal system timing values supersede these values.
- Field adjust temporary poles as needed.



\*Video Detection Area. Camera locations should be confirmed in the field by the contractor in order to provide detection of the areas indicated.

FEATURE	ASC/3 TIMING CHART					
	1	2	4	5	6	8
Min Green *	7	12	7	7	12	7
Walk *	-	-	-	-	-	-
Ped Clear	-	-	-	-	-	-
Veh. Extension *	2.0	6.0	2.0	2.0	6.0	2.0
Max I *	15	90	15	15	90	15
Yellow	3.0	4.5	3.3	3.0	4.5	3.2
Red Clear	2.3	1.4	2.2	2.8	1.4	2.8
Red Revert	-	-	-	-	-	-
Actuations B4 Add *	-	-	-	-	-	-
Seconds /Actuation *	-	-	-	-	-	-
Max Initial *	-	-	-	-	-	-
Time Before Reduction *	-	15	-	-	15	-
Time To Reduce *	-	30	-	-	30	-
Minimum Gap	-	3.0	-	-	3.0	-
Locking Detector	-	-	-	-	-	-
Recall Position	-	VEH. RECALL	-	-	VEH. RECALL	-
Dual Entry	-	-	X	-	-	X
Simultaneous Gap	X	X	X	X	X	X

\* These values may be field adjusted. Do not adjust Min Green and Extension times for phases 2 and 6 lower than what is shown. Min Green for all other phases should not be lower than 4 seconds.



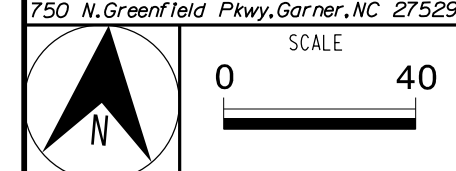
Signal Upgrade Temporary Design 1 - TMP Phase I

US 401 Business (Raeford Road) at Sandalwood Drive/ Lafayette Ford Entrance

Division 6 Cumberland County Fayetteville

PLAN DATE: March 2018 REVIEWED BY: E D Harris

PREPARED BY: R M Muncey REVIEWED BY: B L Watson



REVISIONS	INIT.	DATE

DATE: 3/29/2018

SIG. INVENTORY NO. 06-049111

DOCUMENT NOT CONSIDERED FINAL UNLESS ALL SIGNATURES COMPLETED

3/29/2018 10:45:00 AM User: r.muncey