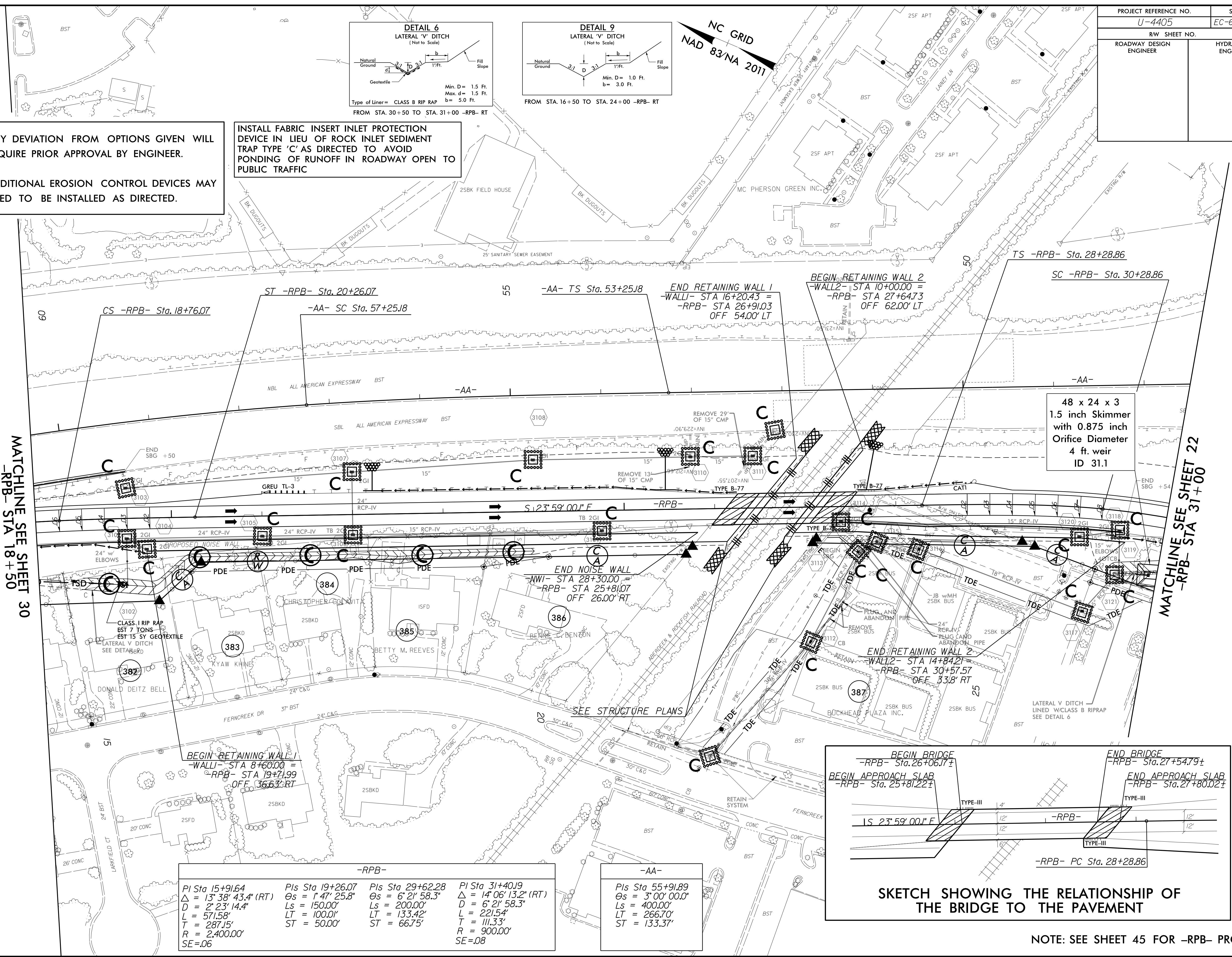


NOTES: ANY DEVIATION FROM OPTIONS GIVEN WILL REQUIRE PRIOR APPROVAL BY ENGINEER.

ADDITIONAL EROSION CONTROL DEVICES MAY NEED TO BE INSTALLED AS DIRECTED.

INSTALL FABRIC INSERT INLET PROTECTION DEVICE IN LIEU OF ROCK INLET SEDIMENT TRAP TYPE 'C' AS DIRECTED TO AVOID PONDING OF RUNOFF IN ROADWAY OPEN TO PUBLIC TRAFFIC

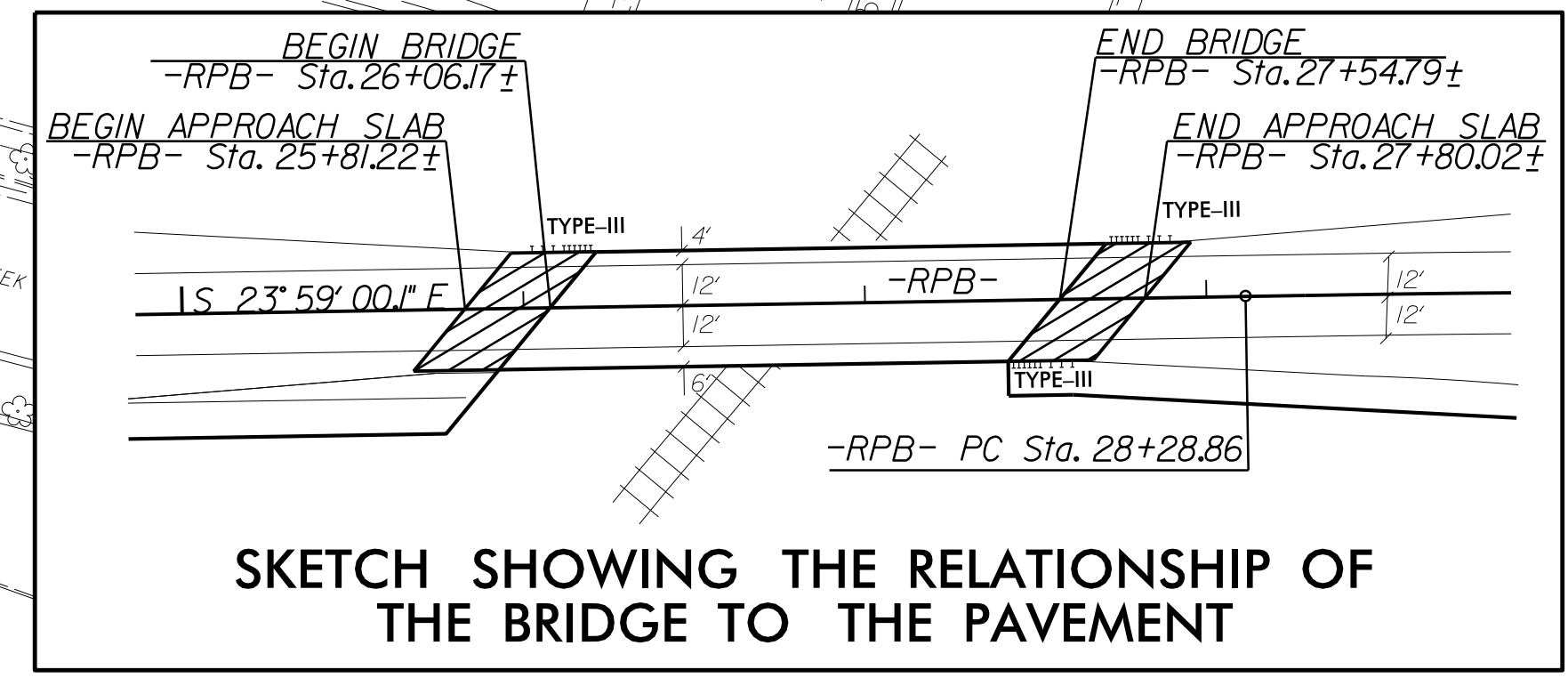
NC GRID  
NAD 83/NA 2011



MATCHLINE SEE SHEET 30  
-RPB- STA 18+50

MATCHLINE SEE SHEET 22  
-RPB- STA 31+00

48 x 24 x 3  
1.5 inch Skimmer  
with 0.875 inch  
Orifice Diameter  
4 ft. weir  
ID 31.1



-RPB-			
PI Sta 15+91.64	PIs Sta 19+26.07	PIs Sta 29+62.28	PI Sta 31+40.19
$\Delta = 13^\circ 38' 43.4\" (RT)$	$\Theta_s = 1^\circ 47' 25.8\"$	$\Theta_s = 6^\circ 21' 58.3\"$	$\Delta = 14^\circ 06' 13.2\" (RT)$
$D = 2^\circ 23' 14.4\"$	$L_s = 150.00'$	$L_s = 200.00'$	$D = 6^\circ 21' 58.3\"$
$L = 571.58'$	$LT = 100.01'$	$LT = 133.42'$	$L = 221.54'$
$T = 287.15'$	$ST = 50.00'$	$ST = 66.75'$	$T = 111.33'$
$R = 2,400.00'$			$R = 900.00'$
$SE = .06$			$SE = .08$

-AA-
PIs Sta 55+91.89
$\Theta_s = 3^\circ 00' 00.0\"$
$L_s = 400.00'$
$LT = 266.70'$
$ST = 133.37'$

NOTE: SEE SHEET 45 FOR -RPB- PROFILE

REVISIONS

8/17/99  
15 MAY 2016 10:03  
R:\V\A\Design\Submittal\04-06-2018\Microstation Design Files\U4405-REU\EC\_psh\_31.F.mcd.dgn  
15 MAY 2016 10:03  
R:\V\A\Design\Submittal\04-06-2018\Microstation Design Files\U4405-REU\EC\_psh\_31.F.mcd.dgn