

8/17/99

CLEARING AND GRUBBING
EROSION CONTROL FOR
CONSTRUCTION SHEET 32

NOTE:
PLACE TEMPORARY ROCK SEDIMENT DAMS TYPE - B
AND TEMPORARY ROCK SILT CHECKS TYPE - A AT
DRAINAGE OUTLETS.

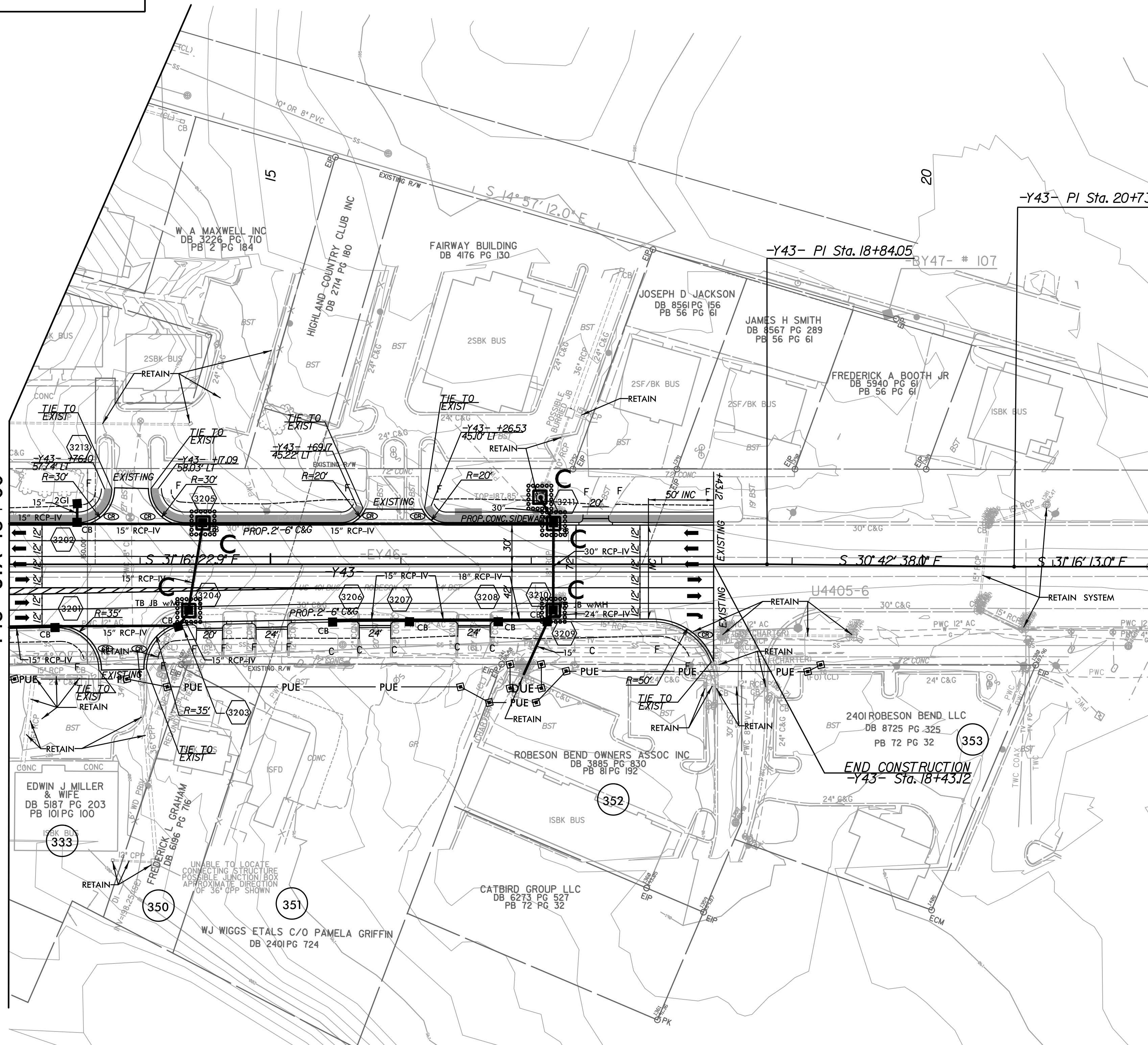
PROJECT REFERENCE NO.	SHEET NO.
U-4405	EC-38/CONST.32
RW SHEET NO.	
ROADWAY DESIGN ENGINEER	HYDRAULICS ENGINEER

NC GRID
NAD 83/NA 2011

-Y43-	
PI Sta 18+97.74	PI Sta 21+17.77
$\Delta = 0^{\circ} 29' 06.2''$ (RT)	$\Delta = 0^{\circ} 28' 56.2''$ (LT)
$D = 1^{\circ} 25' 56.6''$	$D = 1^{\circ} 25' 56.6''$
$L = 33.86'$	$L = 33.67'$
$T = 16.93'$	$T = 16.83'$
$R = 4,000.00'$	$R = 4,000.00'$

REVISIONS

MATCHLINE SEE SHEET 27
-Y43- STA 13+00



NOTES: ANY DEVIATION FROM OPTIONS GIVEN WILL REQUIRE PRIOR APPROVAL BY ENGINEER.

ADDITIONAL EROSION CONTROL DEVICES MAY NEED TO BE INSTALLED AS DIRECTED.

INSTALL FABRIC INSERT INLET PROTECTION DEVICE IN LIEU OF ROCK INLET SEDIMENT TRAP TYPE 'C' AS DIRECTED TO AVOID PONDING OF RUNOFF IN ROADWAY OPEN TO PUBLIC TRAFFIC

NOTE: SEE SHEET 50 FOR -Y43- PROFILE

I03j44. AM
R:\Environmental\Design\4405_REU_EC_psh_32_10.dgn
8/17/99