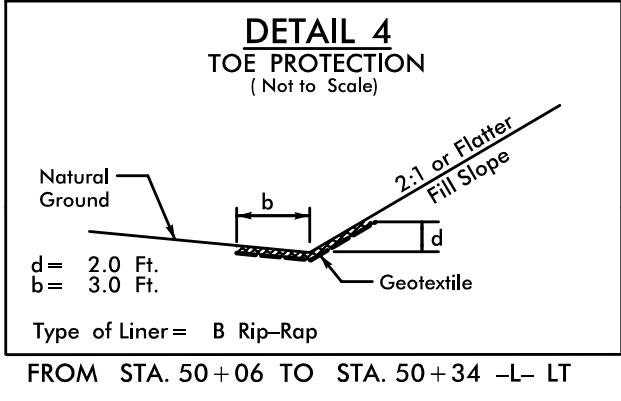


PROJECT REFERENCE NO.	SHEET NO.
U-4405	EC-09/CONST.07
RW SHEET NO.	
ROADWAY DESIGN ENGINEER	HYDRAULICS ENGINEER

NOTES: ANY DEVIATION FROM OPTIONS GIVEN WILL REQUIRE PRIOR APPROVAL BY ENGINEER.

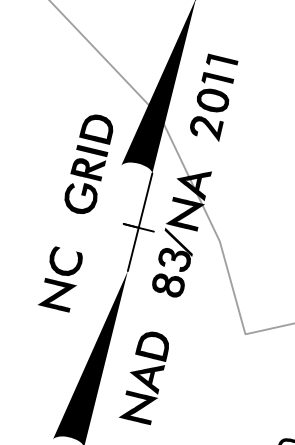
ADDITIONAL EROSION CONTROL DEVICES MAY NEED TO BE INSTALLED AS DIRECTED.

INSTALL FABRIC INSERT INLET PROTECTION DEVICE IN LIEU OF ROCK INLET SEDIMENT TRAP TYPE 'C' AS DIRECTED TO AVOID PONDING OF RUNOFF IN ROADWAY OPEN TO PUBLIC TRAFFIC

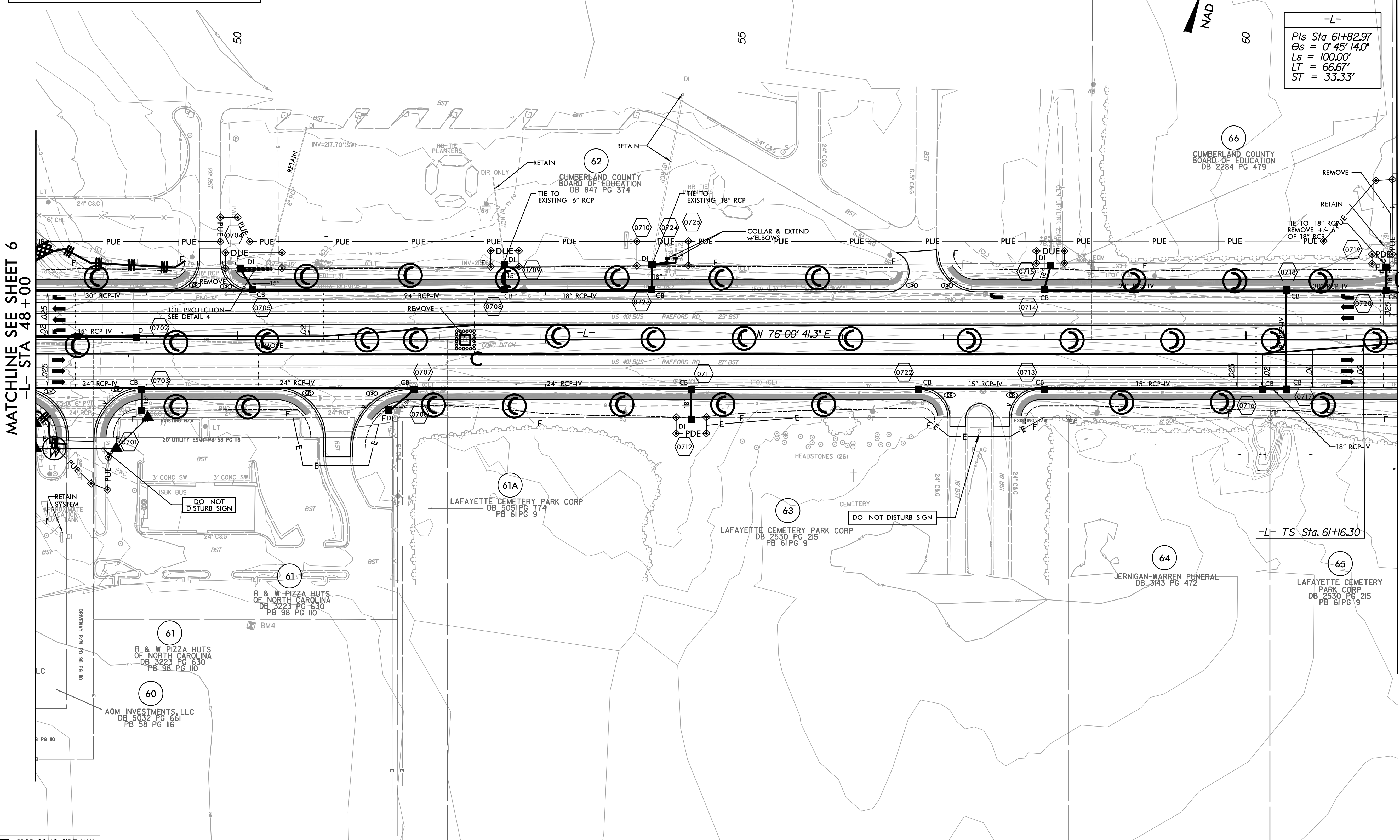


NOTE: PLACE TEMPORARY ROCK SEDIMENT DAMS TYPE - B AND TEMPORARY ROCK SILT CHECKS TYPE - A AT DRAINAGE OUTLETS.

CLEARING AND GRUBBING EROSION CONTROL FOR CONSTRUCTION SHEET 07



-L-
Pls Sta 61+82.97
Os = 0' 45' 14.0"
Ls = 100.00'
LT = 66.67'
ST = 33.33'



MATCHLINE SEE SHEET 6
-L- STA 48+00

MATCHLINE SEE SHEET 8
-L- STA 61+50

10:22:47 AM
R:\Environmental\Design\4405_REU_EC_psh_07_10.dgn
10/22/17
AOM INVESTMENTS, LLC
DB 5032 PG 661
PB 58 PG 116

NOTE: SEE SHEET 34 FOR -L- PROFILE