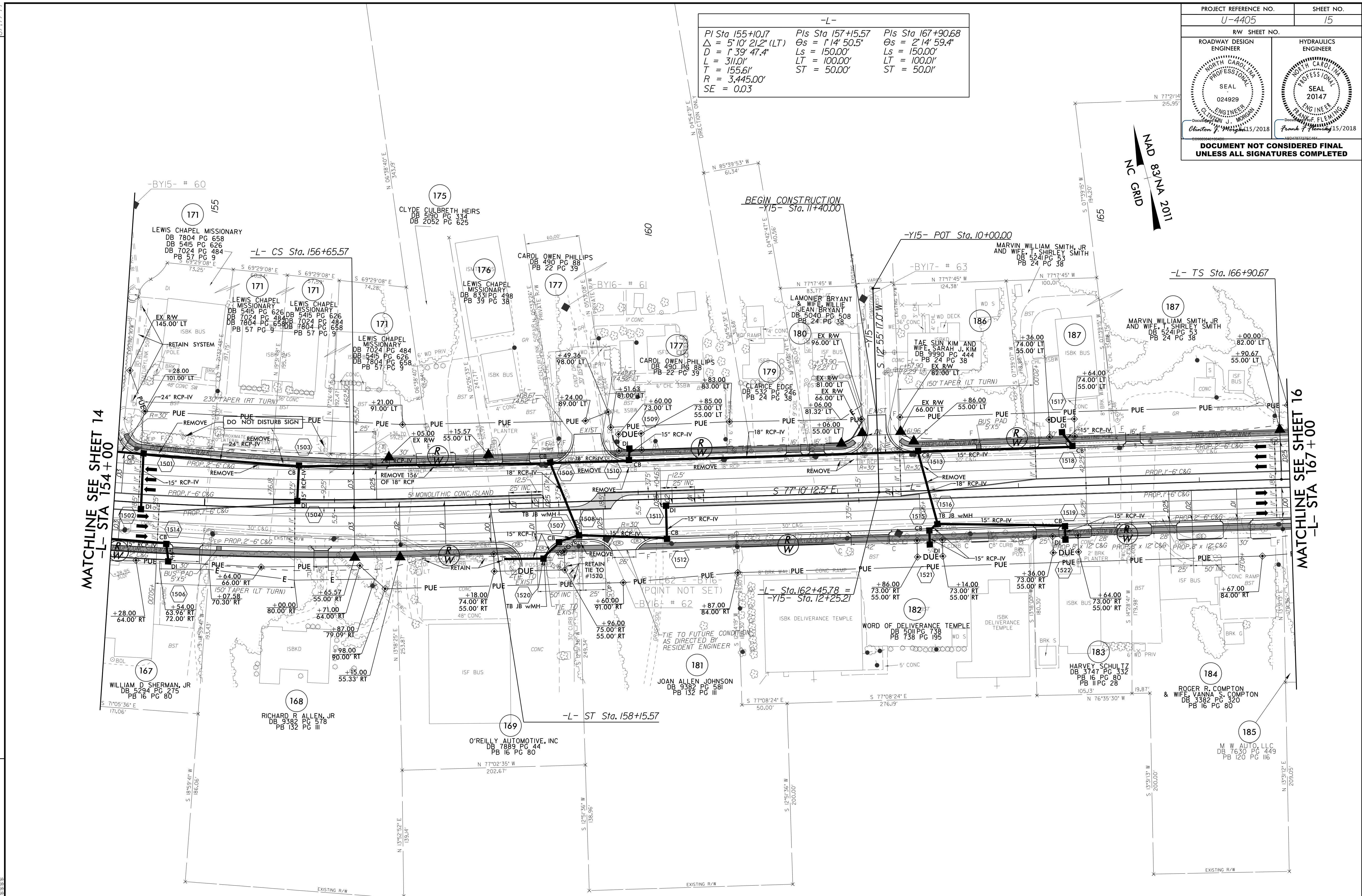


PROJECT REFERENCE NO. U-4405	SHEET NO. 15
RW SHEET NO.	
ROADWAY DESIGN ENGINEER	HYDRAULICS ENGINEER
DOCUMENT NOT CONSIDERED FINAL UNLESS ALL SIGNATURES COMPLETED	

-L-		
PI Sta 155+10.17	PIs Sta 157+15.57	PIs Sta 167+90.67
$\Delta = 5'10" 21.2" (LT)$	$\Delta s = 1'14" 50.5"$	$\Delta s = 2'14" 59.4"$
$D = 1'39" 47.4"$	$Ls = 150.00'$	$Ls = 150.00'$
$L = 311.01'$	$LT = 100.00'$	$LT = 100.01'$
$T = 155.61'$	$ST = 50.00'$	$ST = 50.01'$
$R = 3,445.00'$		
$SE = 0.03$		



MATCHLINE SEE SHEET 14
-L- STA 154+00

MATCHLINE SEE SHEET 16
-L- STA 167+00

PROF CONC SIDEWALK

NOTE: SEE SHEET 38 FOR -L- PROFILE
SEE SHEET 48 FOR -Y15- PROFILE
SEE SHEET 2B-3 FOR INTERSECTION DETAILS
BUS PADS WILL BE PAID FOR AS SIDEWALK

REVISIONS

15 JUN 2018 16:37
R:\Projects\4405\rdw_psh_15.dgn
15 JUN 2018 16:37
R:\Projects\4405\rdw_psh_15.dgn