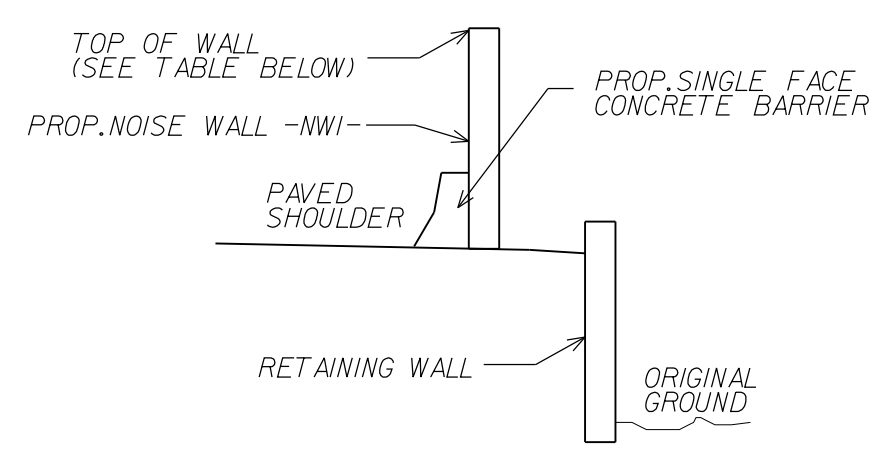
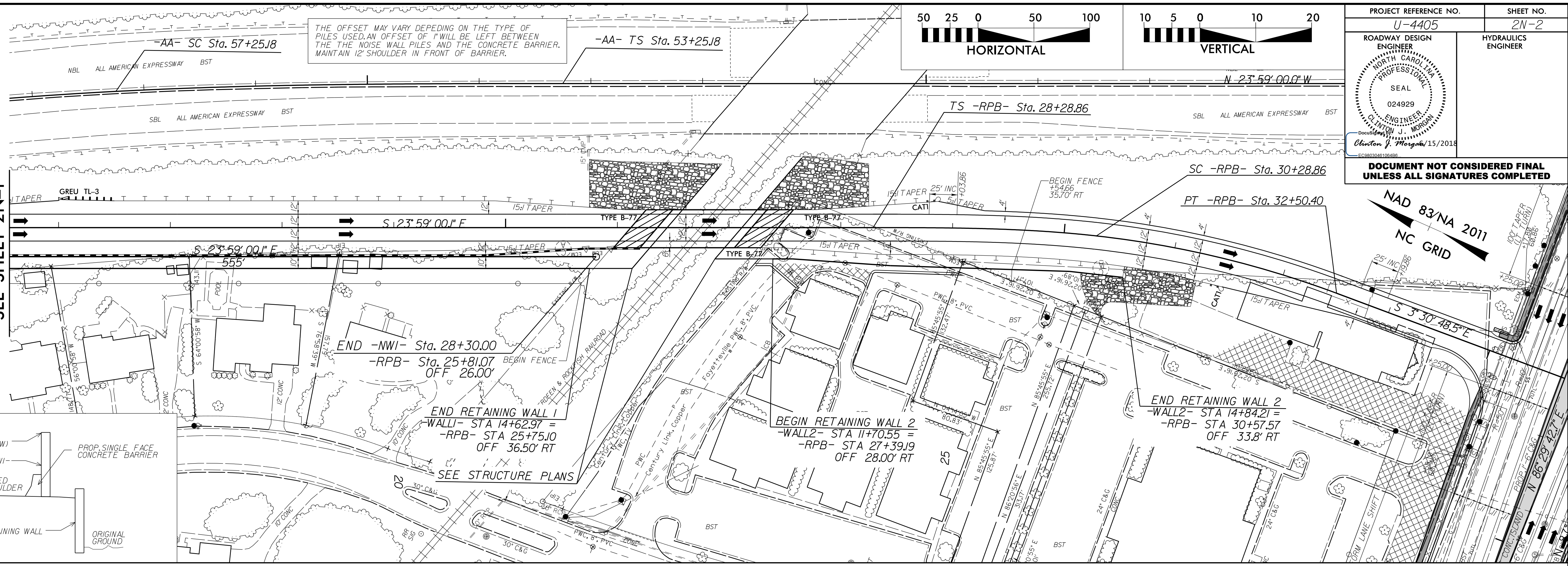
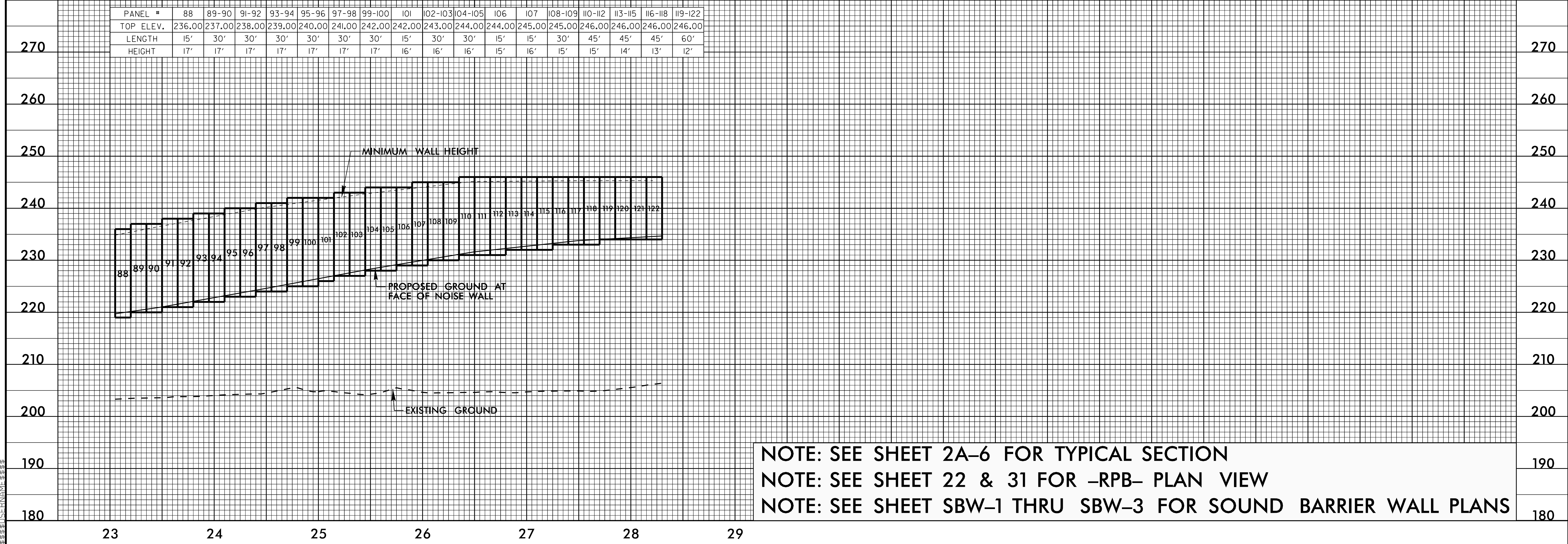


5/28/2018

MATCHLINE
-NWI- STA 23+05
SEE SHEET 2N-1



PANEL #	88	89-90	91-92	93-94	95-96	97-98	99-100	101	102-103	104-105	106	107	108-109	110-112	113-115	116-118	119-122
TOP ELEV.	236.00	237.00	238.00	239.00	240.00	241.00	242.00	243.00	244.00	244.00	245.00	245.00	246.00	246.00	246.00	246.00	246.00
LENGTH	15'	30'	30'	30'	30'	30'	30'	15'	30'	30'	15'	15'	30'	45'	45'	45'	60'
HEIGHT	17'	17'	17'	17'	17'	17'	17'	16'	16'	16'	15'	16'	15'	15'	14'	13'	12'



NOTE: SEE SHEET 2A-6 FOR TYPICAL SECTION
 NOTE: SEE SHEET 22 & 31 FOR -RPB- PLAN VIEW
 NOTE: SEE SHEET SBW-1 THRU SBW-3 FOR SOUND BARRIER WALL PLANS

15 JUN 2018 17:53
F:\Projects\4405_rdy.pfl_psh_nwi-2.dgn

PROJECT REFERENCE NO. U-4405
SHEET NO. 2N-2

ROADWAY DESIGN ENGINEER
NORTH CAROLINA PROFESSIONAL ENGINEERS SEAL
024929
Clinton J. Morgan 15/2018

HYDRAULICS ENGINEER

DOCUMENT NOT CONSIDERED FINAL UNLESS ALL SIGNATURES COMPLETED