

STATE OF  
NORTH CAROLINA  
DEPT. OF TRANSPORTATION  
DIVISION OF HIGHWAYS  
RALEIGH, N.C.

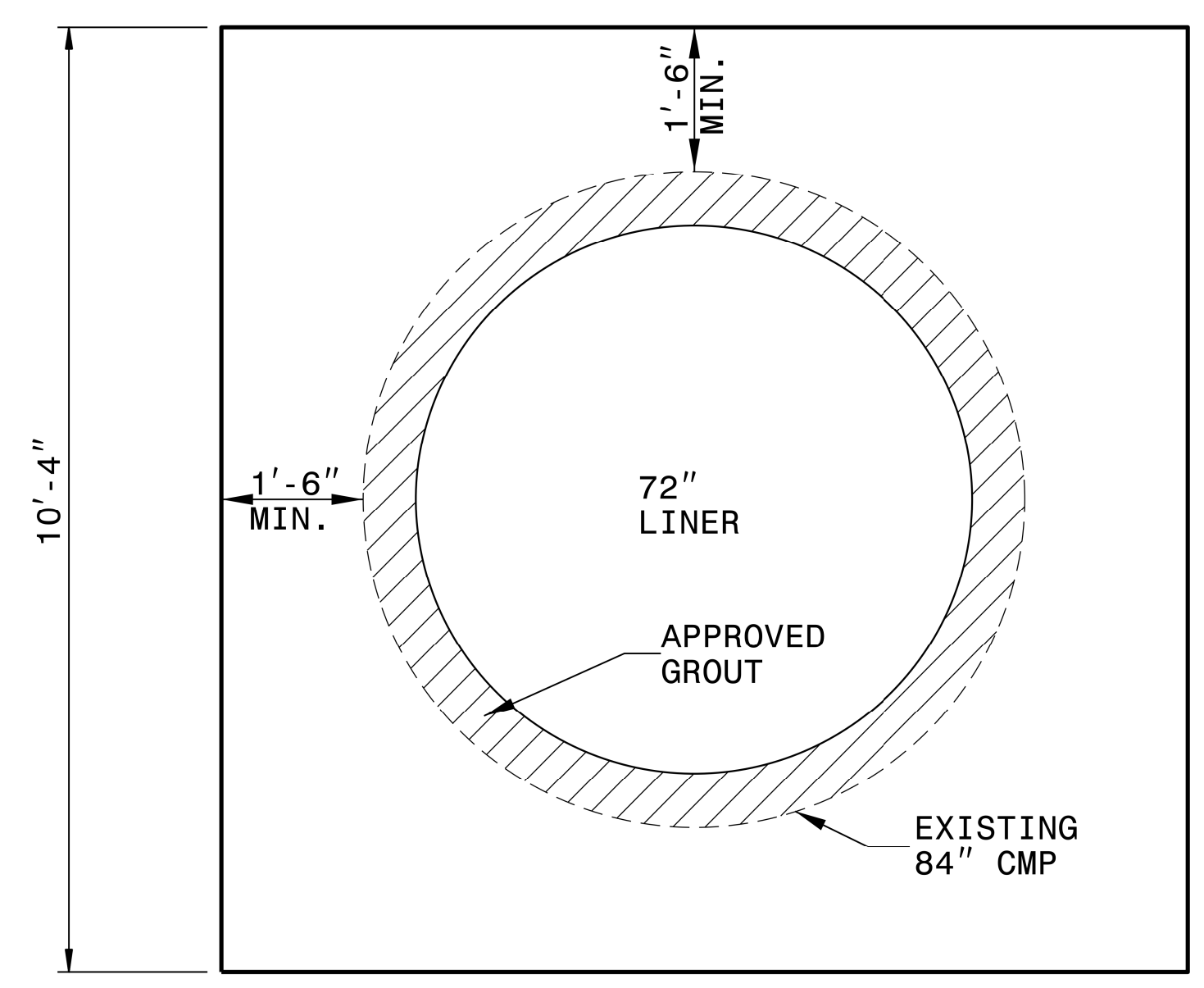
ENGLISH DETAIL DRAWING FOR  
**PIPE COLLAR**

SHEET 1 OF 1  
**840D72**

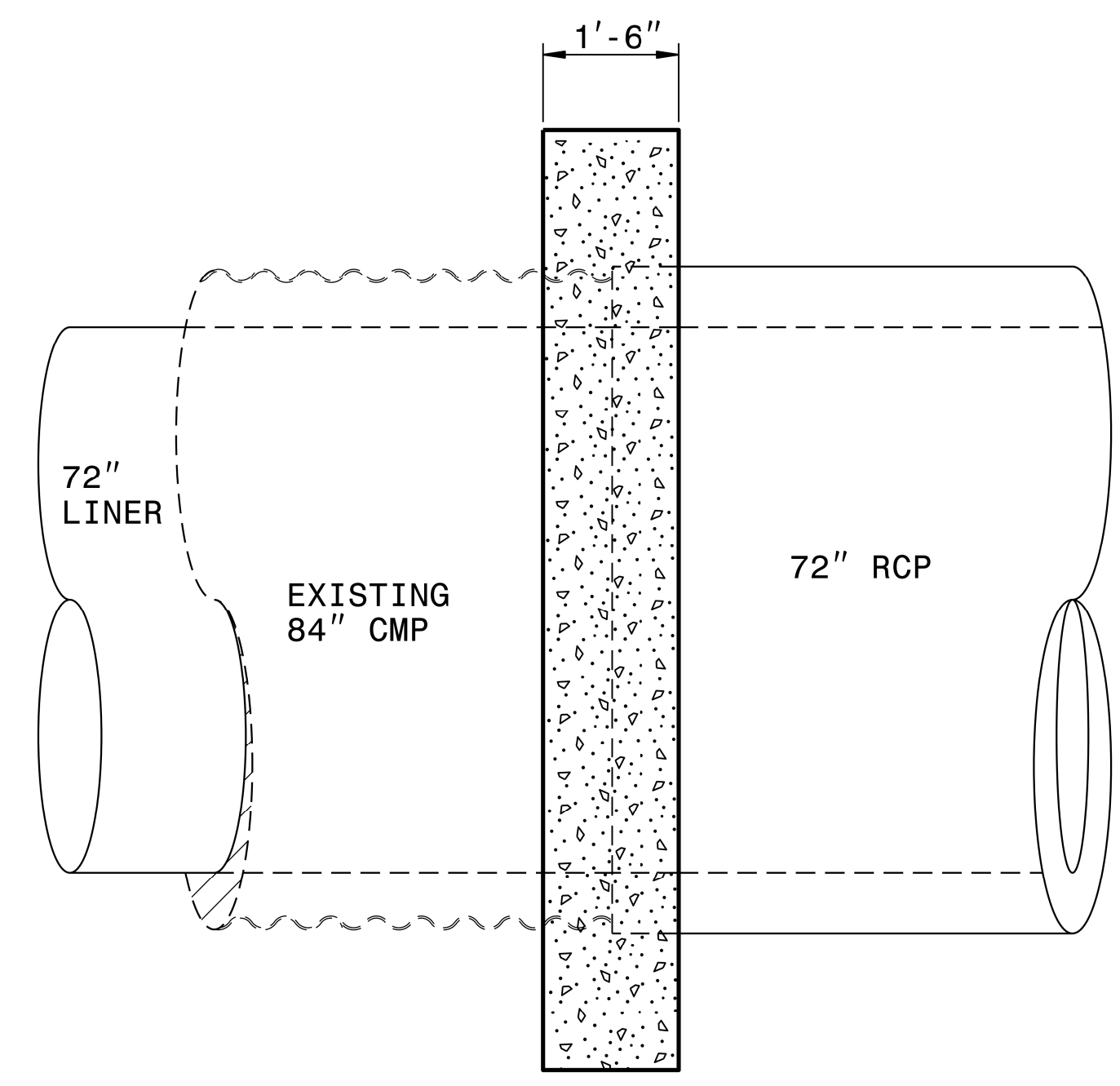
STATE OF  
NORTH CAROLINA  
DEPT. OF TRANSPORTATION  
DIVISION OF HIGHWAYS  
RALEIGH, N.C.

ENGLISH DETAIL DRAWING FOR  
**PIPE COLLAR**

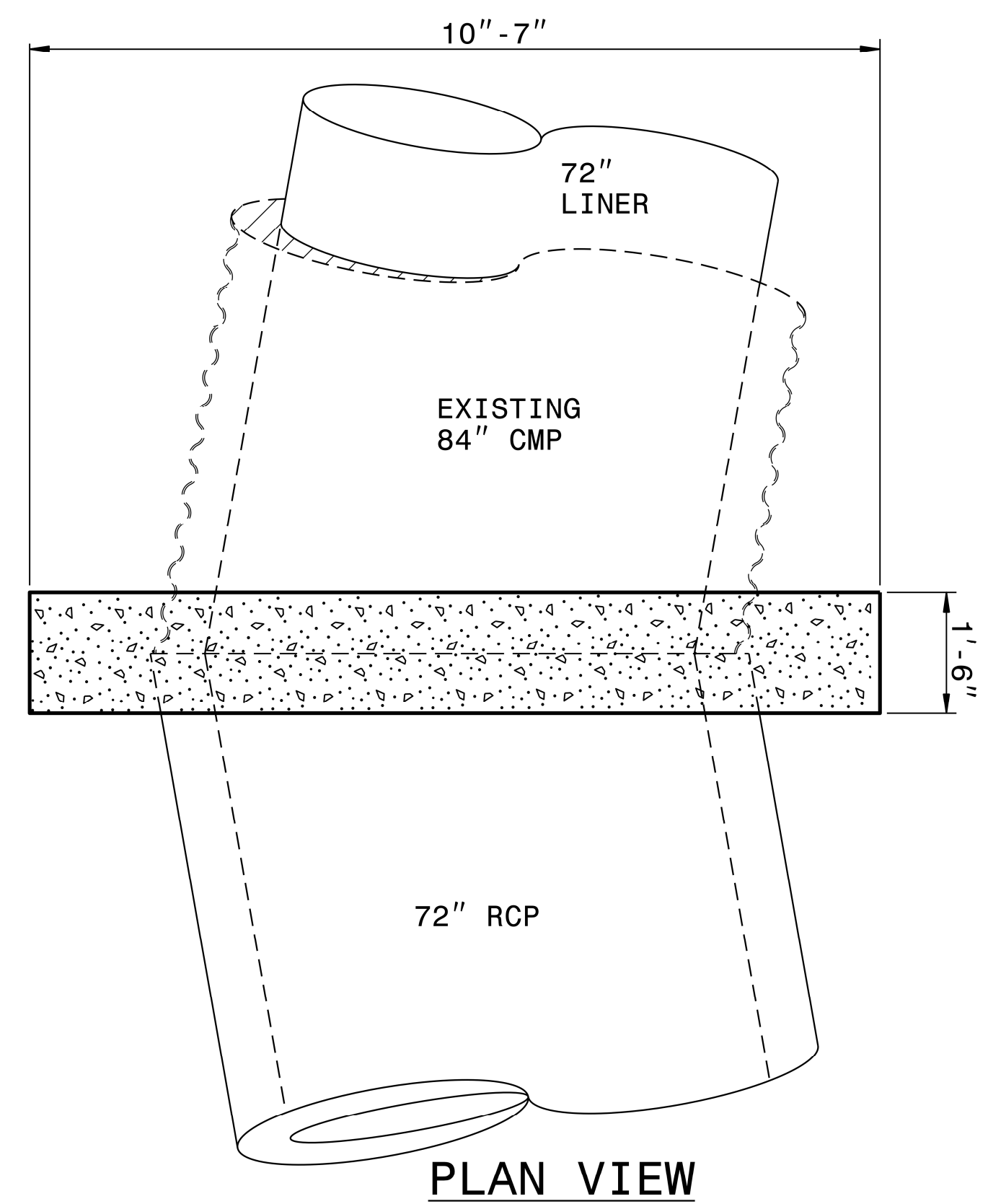
SHEET 1 OF 1  
**840D72**



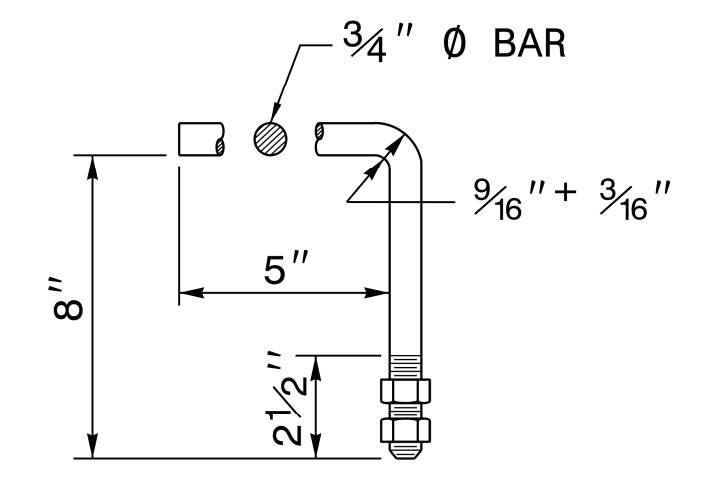
**SECTION THROUGH COLLAR**



**ELEVATION**



**PLAN VIEW**



**HOOK BOLT**

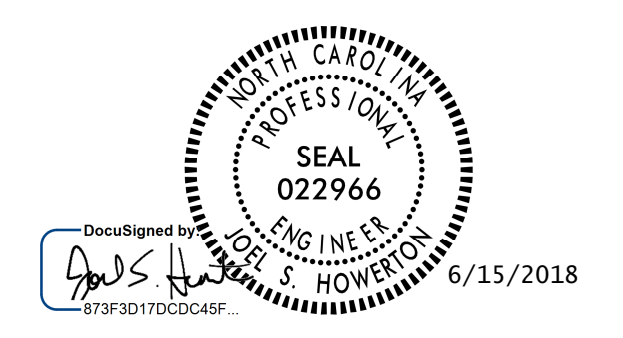
HOOK BOLTS (CONSTRUCT ANCHORS AT 2'-0" CTS. ALONG THE CIRCUMFERENCE OF THE 84" CMP. EMBED THE HOOK BOLTS IN THE CONCRETE ENDWALL 8" IN DEPTH. THE GALVANIZED 3/4" DIA. HOOK BOLTS MUST MEET ASTM A-307 OR ASTM A-836. BOTH BOLTS AND NUTS MUST BE IN ACCORDANCE WITH ASTM A-153 FOR GALVANIZING.

**GENERAL NOTES:**

- USE PIPE COLLAR FOR EXTENDING EXISTING PIPE CULVERTS, AT LOCATIONS SHOWN ON PLANS OR AS DIRECTED BY THE ENGINEER. THIS INCLUDES EXTENDING EXISTING PIPES WITH PIPES OF DIFFERENT MATERIALS.
- CUT PIPES AS DIRECTED BY THE ENGINEER TO INSURE TIGHT FIT.
- CONSTRUCT THE PIPE COLLAR OF CLASS "B" OR BETTER CONCRETE.
- DIMENSIONS MAY BE ADJUSTED IN THE FIELD AS DIRECTED BY THE ENGINEER.

<b>BILL OF MATERIAL</b>
CLASS "B" CONC. (Cu.Yds.) = 3.7

20-APR-2018 16:55  
S:\Contractors\Cent505\Special Details\kempf\english\collar\_84cmp\_slipline.dgn  
kempf - AT - CSD-292596



**DOCUMENT NOT CONSIDERED FINAL  
UNLESS ALL SIGNATURES COMPLETED**

**CONTRACT STANDARDS  
AND DEVELOPMENT UNIT**  
Office 919-707-6950 FAX 919-250-4119

**SEE PLATE FOR TITLE**

ORIGINAL BY: \_\_\_\_\_ DATE: \_\_\_\_\_  
 MODIFIED BY: *J.A.Kempf* DATE: *March 23, 2018*  
 CHECKED BY: \_\_\_\_\_ DATE: \_\_\_\_\_  
 FILE SPEC.: details/kempf/english/collar\_84cmp\_slipline.dgn