

**This electronic collection of documents is provided  
for the convenience of the user  
and is Not a Certified Document –**

**The documents contained herein were originally issued  
and sealed by the individuals whose names and license  
numbers appear on each page, on the dates appearing  
with their signature on that page.**

**This file or an individual page  
shall not be considered a certified document.**

09/08/19

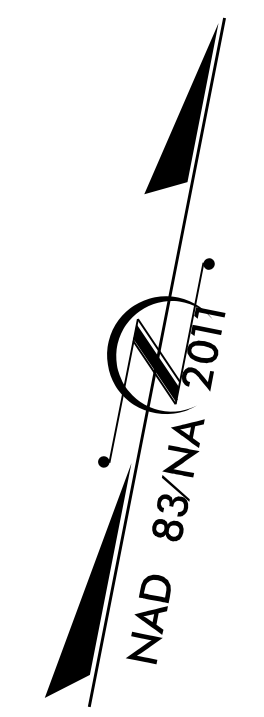
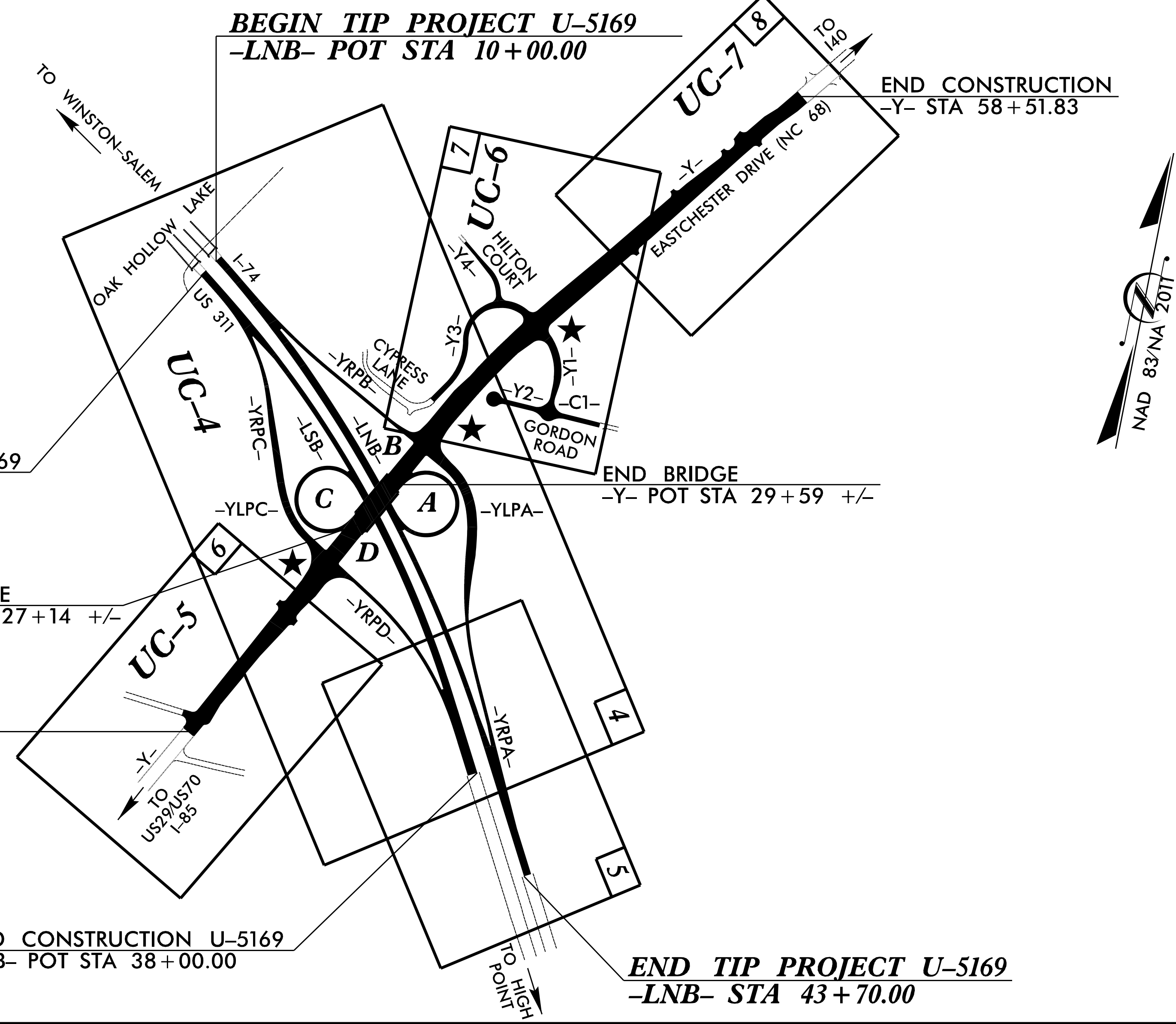
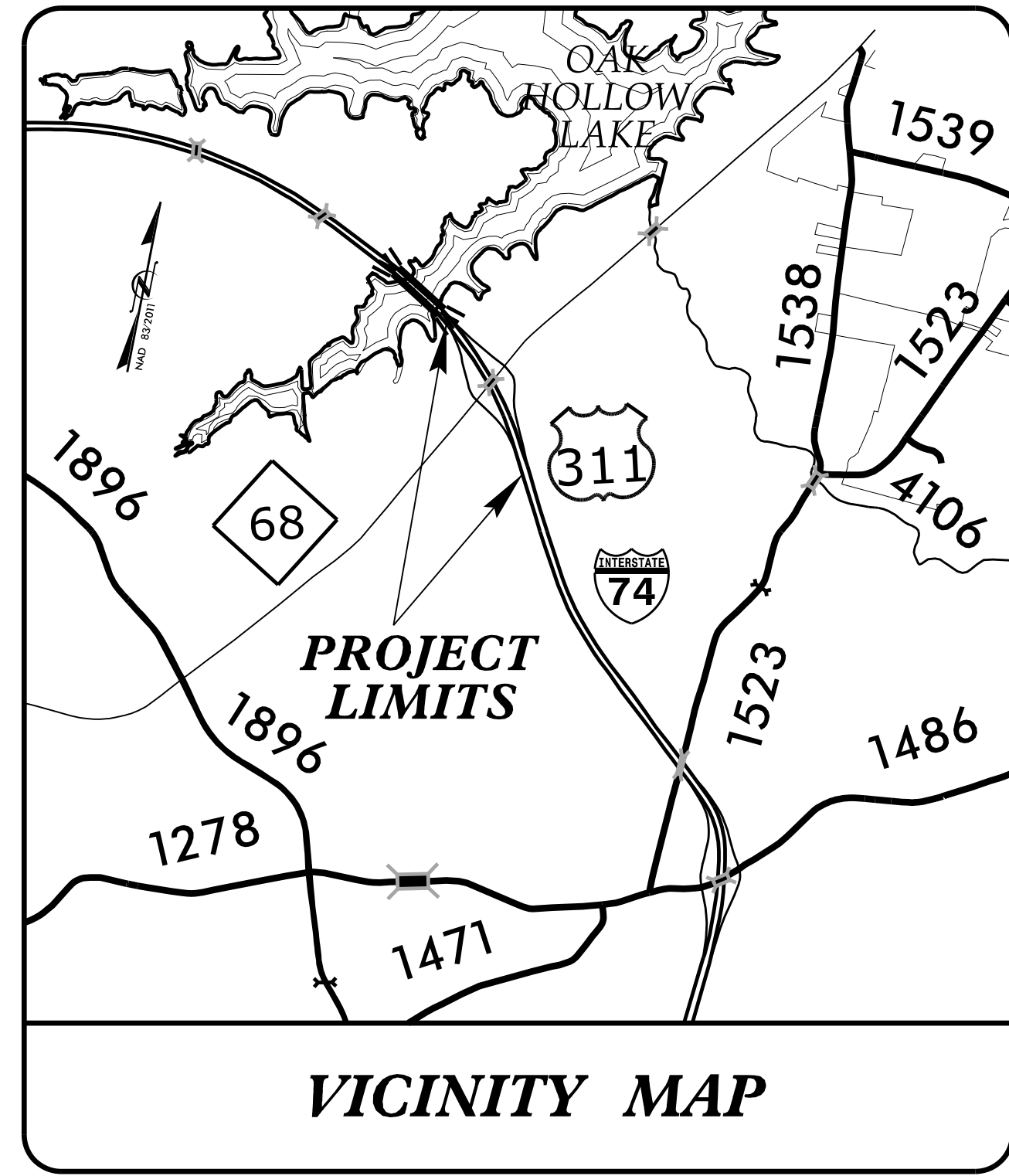
STATE OF NORTH CAROLINA  
DIVISION OF HIGHWAYS

T.I.P. NO.	SHEET NO.
U-5169	UC-1

TIP PROJECT: U-5169

# UTILITY CONSTRUCTION PLANS GUILFORD COUNTY

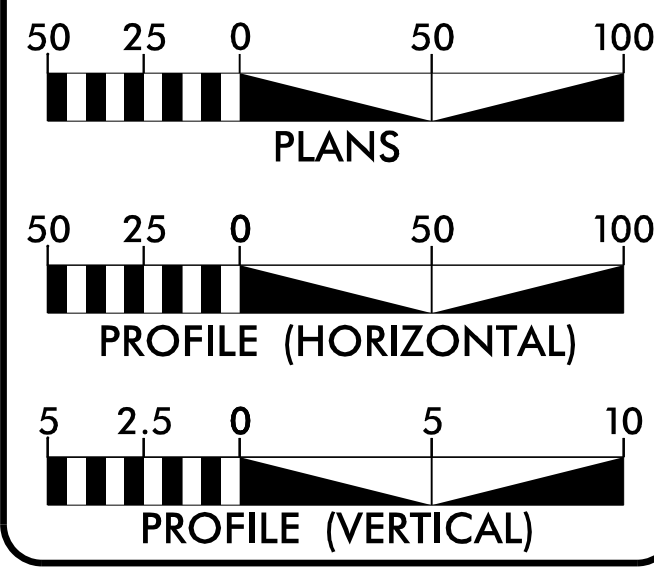
LOCATION: I-74/US311 AND NC 68 (EASTCHESTER DRIVE) INTERCHANGE IMPROVEMENTS  
TYPE OF WORK: UTILITY CONSTRUCTION



NOTE:  
THIS PROJECT IS WITHIN THE MUNICIPAL BOUNDARIES OF THE CITY OF HIGH POINT.

**DOCUMENT NOT CONSIDERED FINAL  
UNLESS ALL SIGNATURES COMPLETED**

### GRAPHIC SCALES



### INDEX OF SHEETS

SHEET NO.:	DESCRIPTION:
UC-1	TITLE SHEET
UC-2	UTILITY SYMBOLOGY
UC-3	NOTES
UC-3A AND UC-3B	DETAILS
UC-4 THRU UC-7	UTILITY CONSTRUCTION SHEETS
UC-8 THRU UC-10	PROFILE SHEETS

### WATER AND SEWER OWNERS ON PROJECT

- A) WATER - CITY OF HIGH POINT
- B) SANITARY SEWER - CITY OF HIGH POINT

PREPARED IN THE OFFICE OF:

**DAVIS • MARTIN • POWELL**  
ENGINEERS & SURVEYORS

8415 OLD PLANK RD., HIGH POINT, NC 27285  
PHONE: (336)886-4821 FAX: (336)886-4458  
WWW.DMP-INC.COM LICENSE: F-0245

Andy Larrick, P.E.	CONSULTANT CONTACT #1
Randy McNeill, P.E.	CONSULTANT CONTACT #2
Steve McKee, P.E.	CONSULTANT CONTACT #3

SEAL

3/14/2018

**DIVISION OF HIGHWAYS  
UTILITIES UNIT**  
1555 MAIL SERVICES CENTER  
RALEIGH, NC 27699-1555  
PHONE (919) 707-6690  
FAX (919) 250-4151

Ali Kouchecki, P.E.	UTILITIES REGIONAL ENGINEER
Bernie Bumgarner	UTILITIES ENGINEER
Kyle Pleasant	UTILITIES COORDINATOR

\$\$\$\$\$ SYSTEM \$\$\$\$\$\$  
\$\$\$\$\$ DDN \$\$\$\$\$\$  
\$\$\$\$\$ USERNAME \$\$\$\$\$\$

STATE OF NORTH CAROLINA  
DIVISION OF HIGHWAYS

# UTILITIES PLAN SHEET SYMBOLS

## PROPOSED WATER SYMBOLS

Water Line (Sized as Shown)	
11¼ Degree Bend	
22½ Degree Bend	
45 Degree Bend	
90 Degree Bend	
Plug	
Tee	
Cross	
Reducer	
Gate Valve	
Butterfly Valve	
Tapping Valve	
Line Stop	
Line Stop with Bypass	
Blow Off	
Fire Hydrant	
Relocate Fire Hydrant	
Remove Fire Hydrant	
Water Meter	
Relocate Water Meter	
Remove Water Meter	
Water Pump Station	
RPZ Backflow Preventer	
DCV Backflow Preventer	
Relocate RPZ Backflow Preventer	
Relocate DCV Backflow Preventer	

## PROPOSED SEWER SYMBOLS

Gravity Sewer Line (Sized as Shown)	
Force Main Sewer Line (Sized as Shown)	
Manhole (Sized per Note)	
Sewer Pump Station	

## PROPOSED MISCELLANEOUS UTILITIES SYMBOLS

Power Pole	
Telephone Pole	
Joint Use Pole	
Telephone Pedestal	
Utility Line by Others (Type as Shown)	
Trenchless Installation	
Encasement by Open Cut	
Encasement	

Thrust Block	
Air Release Valve	
Utility Vault	
Concrete Pier	
Steel Pier	
Plan Note	
Pay Item Note	

NOTE  
PAY ITEM

## EXISTING UTILITIES SYMBOLS

Power Pole		*Underground Power Line	
Telephone Pole		*Underground Telephone Cable	
Joint Use Pole		*Underground Telephone Conduit	
Utility Pole		*Underground Fiber Optics Telephone Cable	
Utility Pole with Base		*Underground TV Cable	
H-Frame Pole		*Underground Fiber Optics TV Cable	
Power Transmission Line Tower		*Underground Gas Pipeline	
Water Manhole		Aboveground Gas Pipeline	
Power Manhole		*Underground Water Line	
Telephone Manhole		Aboveground Water Line	
Sanitary Sewer Manhole		*Underground Gravity Sanitary Sewer Line	
Hand Hole for Cable		Aboveground Gravity Sanitary Sewer Line	
Power Transformer		*Underground SS Forced Main Line	
Telephone Pedestal		Underground Unknown Utility Line	
CATV Pedestal		SUE Test Hole	
Gas Valve		Water Meter	
Gas Meter		Water Valve	
Located Miscellaneous Utility Object		Fire Hydrant	
Abandoned According to Utility Records		Sanitary Sewer Cleanout	
End of Information			

\*For Existing Utilities  
Utility Line Drawn from Record (Type as Shown)  
Designated Utility Line (Type as Shown)

5/14/99  
REV: 2/1/2012

5/14/99  
11  
10  
9  
8  
7  
6  
5  
4  
3  
2  
1

# UTILITY CONSTRUCTION

## GENERAL NOTES:

1. THE PROPOSED UTILITY CONSTRUCTION SHALL MEET THE APPLICABLE REQUIREMENTS OF THE NC DEPARTMENT OF TRANSPORTATION'S "STANDARD SPECIFICATIONS FOR ROADS AND STRUCTURES" DATED JANUARY 2018.
2. THE EXISTING UTILITIES BELONG TO THE CITY OF HIGH POINT.
3. ALL WATER LINES TO BE INSTALLED WITHIN COMPLIANCE OF THE RULES AND REGULATIONS OF THE NORTH CAROLINA DEPARTMENT OF ENVIRONMENTAL QUALITY, DIVISION OF WATER RESOURCES, PUBLIC WATER SUPPLY SECTION. ALL SEWER LINES TO BE INSTALLED WITHIN COMPLIANCE OF THE RULES AND REGULATIONS OF THE NORTH CAROLINA DEPARTMENT OF ENVIRONMENT QUALITY, DIVISION OF WATER RESOURCES, WATER QUALITY SECTION. PERFORM ALL WORK IN ACCORDANCE WITH THE APPLICABLE PLUMBING CODES.
4. THE UTILITY OWNER OWNS THE EXISTING UTILITY FACILITIES AND WILL OWN THE NEW UTILITY FACILITIES AFTER ACCEPTANCE BY THE DEPARTMENT. THE DEPARTMENT OWNS THE CONSTRUCTION CONTRACT AND HAS ADMINISTRATIVE AUTHORITY. COMMUNICATIONS AND DECISIONS BETWEEN THE CONTRACTOR AND UTILITY OWNER ARE NOT BINDING UPON THE DEPARTMENT OR THIS CONTRACT UNLESS AUTHORIZED BY THE ENGINEER. AGREEMENTS BETWEEN THE UTILITY OWNER AND CONTRACTOR FOR THE WORK THAT IS NOT PART OF THIS CONTRACT OR IS SECONDARY TO THIS CONTRACT ARE ALLOWED, BUT ARE NOT BINDING UPON THE DEPARTMENT.
5. PROVIDE ACCESS FOR THE DEPARTMENT PERSONNEL AND THE OWNER'S REPRESENTATIVES TO ALL PHASES OF CONSTRUCTION. NOTIFY DEPARTMENT PERSONNEL AND THE UTILITY OWNER TWO WEEKS PRIOR TO COMMENCEMENT OF ANY WORK AND ONE WEEK PRIOR TO SERVICE INTERRUPTION. KEEP UTILITY OWNERS' REPRESENTATIVES INFORMED OF WORK PROGRESS AND PROVIDE OPPORTUNITY FOR INSPECTION OF CONSTRUCTION AND TESTING.

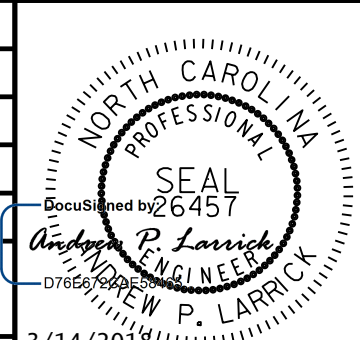
6. THE PLANS DEPICT THE BEST AVAILABLE INFORMATION FOR THE LOCATION, SIZE, AND TYPE OF MATERIAL FOR ALL EXISTING UTILITIES. MAKE INVESTIGATIONS FOR DETERMINING THE EXACT LOCATION, SIZE, AND TYPE MATERIAL OF THE EXISTING FACILITIES AS NECESSARY FOR THE CONSTRUCTION OF THE PROPOSED UTILITIES AND FOR AVOIDING DAMAGE TO EXISTING FACILITIES. REPAIR ANY DAMAGE INCURRED TO EXISTING FACILITIES TO THE ORIGINAL OR BETTER CONDITION AT NO ADDITIONAL COST TO THE DEPARTMENT.
7. MAKE FINAL CONNECTIONS OF THE NEW WORK TO THE EXISTING SYSTEM WHERE INDICATED ON THE PLANS, AS REQUIRED TO FIT THE ACTUAL CONDITIONS, OR AS DIRECTED.
8. MAKE CONNECTIONS BETWEEN EXISTING AND PROPOSED UTILITIES AT TIMES MOST CONVENIENT TO THE PUBLIC, WITHOUT ENDANGERING THE UTILITY SERVICE, AND IN ACCORDANCE WITH THE UTILITY OWNER'S REQUIREMENTS. MAKE CONNECTIONS ON WEEKENDS, AT NIGHT, AND ON HOLIDAYS IF NECESSARY.
9. ALL UTILITY MATERIALS SHALL BE APPROVED PRIOR TO DELIVERY TO THE PROJECT. SEE 1500-7, " SUBMITTALS AND RECORDS" IN SECTION 1500 OF THE STANDARD SPECIFICATIONS.

## PROJECT SPECIFIC NOTES:

1. UNLESS OTHERWISE NOTED, PIPE FOR PROPOSED WATER MAINS IN NOMINAL DIAMETERS 3" THROUGH 12" SHALL BE DUCTILE IRON, PC 350.
2. UNLESS OTHERWISE NOTED, PIPE FOR PROPOSED WATER MAINS IN NOMINAL DIAMETERS 16" AND LARGER SHALL BE DUCTILE IRON, PC 250.
3. WATER LINE VALVES SHALL BE RESILIENT-SEAT GATE VALVES CONFORMING TO ANSI/AWWA C509, RATED FOR 200 PSI MINIMUM WORKING PRESSURE.
4. UNLESS OTHERWISE NOTED, PIPE FOR PROPOSED SEWER MAINS 8" AND LARGER SHALL BE DUCTILE IRON, CLASS 51.
5. UNLESS OTHERWISE NOTED, PIPE FOR PROPOSED SEWER SERVICE LINES SHALL BE DUCTILE IRON, PC 350.
6. THE CONTRACTOR SHALL REPLACE ANY DAMAGED SEWER LATERALS AND/OR CLEANOUTS AS DIRECTED BY THE ENGINEER. THE NECESSARY QUANTITIES HAVE BEEN ADDED TO THE CONTRACT TO FACILITATE THIS PROCEDURE.

## LIST OF STANDARD DRAWINGS

- 1515.01 WATER METER
- 1515.02 FIRE HYDRANT
- 1520.01 SEWER CLEAN OUT
- 1525.06 PRECAST CONCRETE SANITARY SEWER MANHOLE WITH CAST-IN-PLACE BOTTOM

PROJECT REFERENCE NO.	SHEET NO.
U-5169	UC-3
DESIGNED BY: DMP	
DRAWN BY: DMP	
CHECKED BY: DMP	
APPROVED BY:	
REVISED:	
NORTH CAROLINA DEPARTMENT OF TRANSPORTATION	3/14/2018
UTILITIES ENGINEERING SEC. PHONE: (919) 707-6690 FAX: (919) 250-4151	UTILITY CONSTRUCTION PLANS ONLY

## UTILITY CONSTRUCTION

DOCUMENT NOT CONSIDERED FINAL UNLESS ALL SIGNATURES COMPLETED

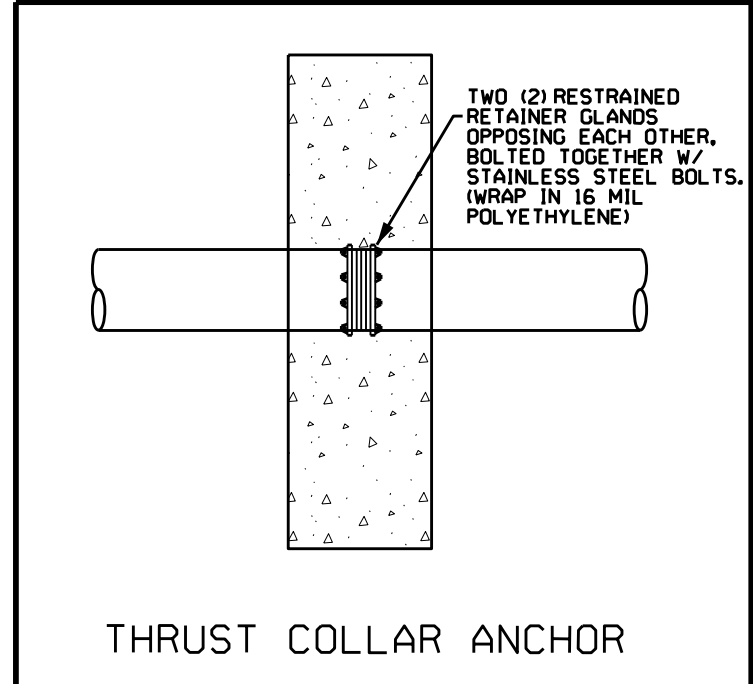
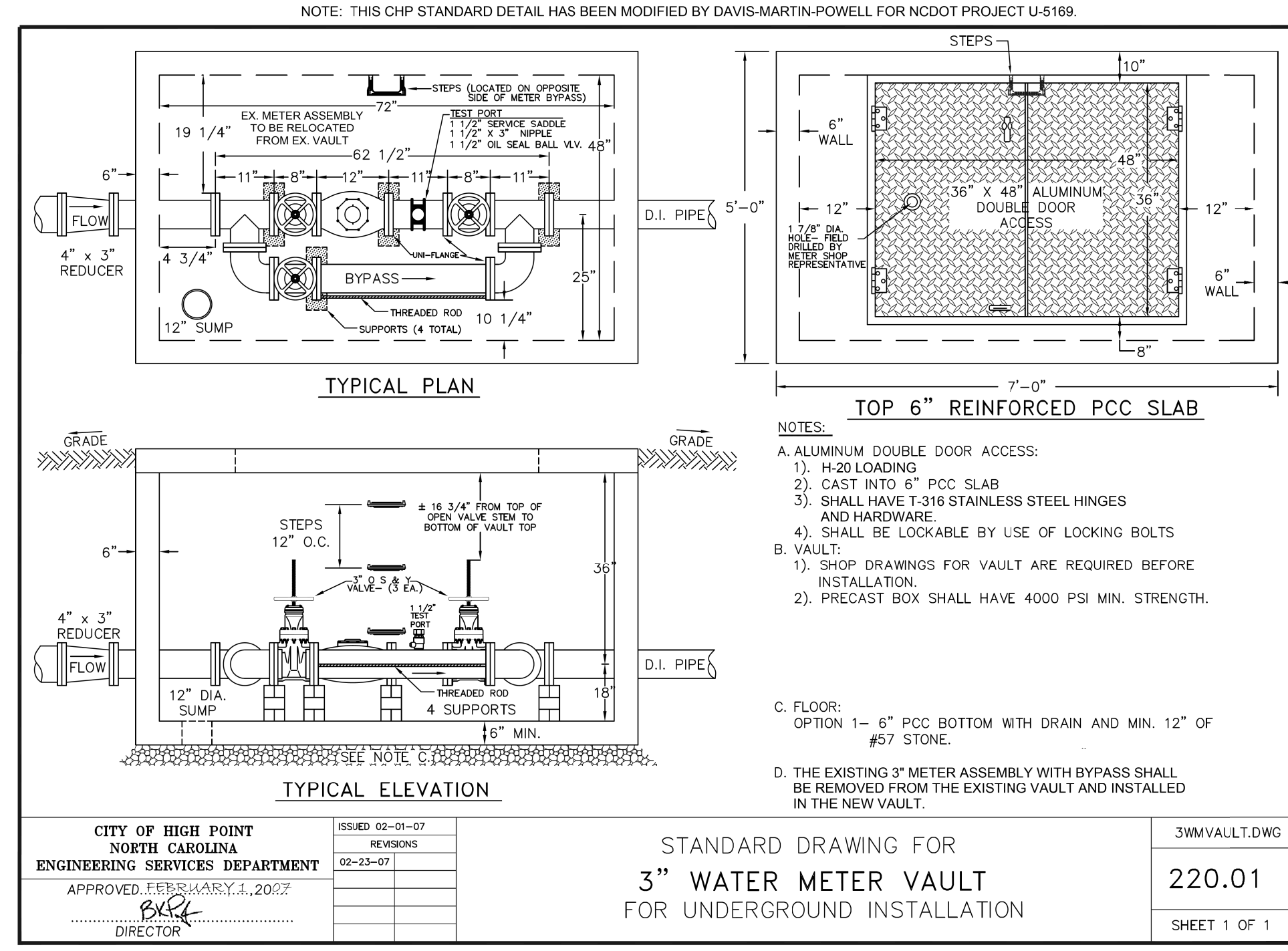
5/14/99

# PROJECT TYPICAL DETAILS

PROJECT REFERENCE NO.	SHEET NO.
U-5169	UC-3A
DESIGNED BY: DMP	
DRAWN BY: DMP	
CHECKED BY: DMP	
APPROVED BY:	
REVISED:	
NORTH CAROLINA DEPARTMENT OF TRANSPORTATION	3/14/2018
UTILITIES ENGINEERING SEC. PHONE: (919) 707-6690 FAX: (919) 250-4151	UTILITY CONSTRUCTION PLANS ONLY

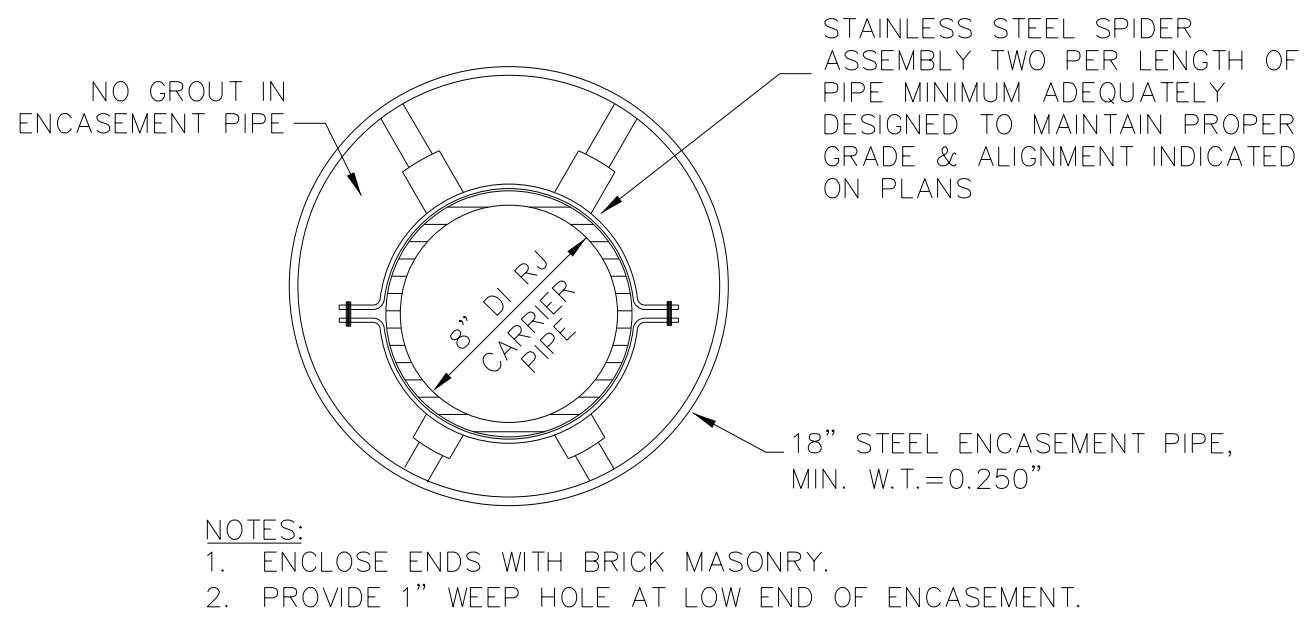
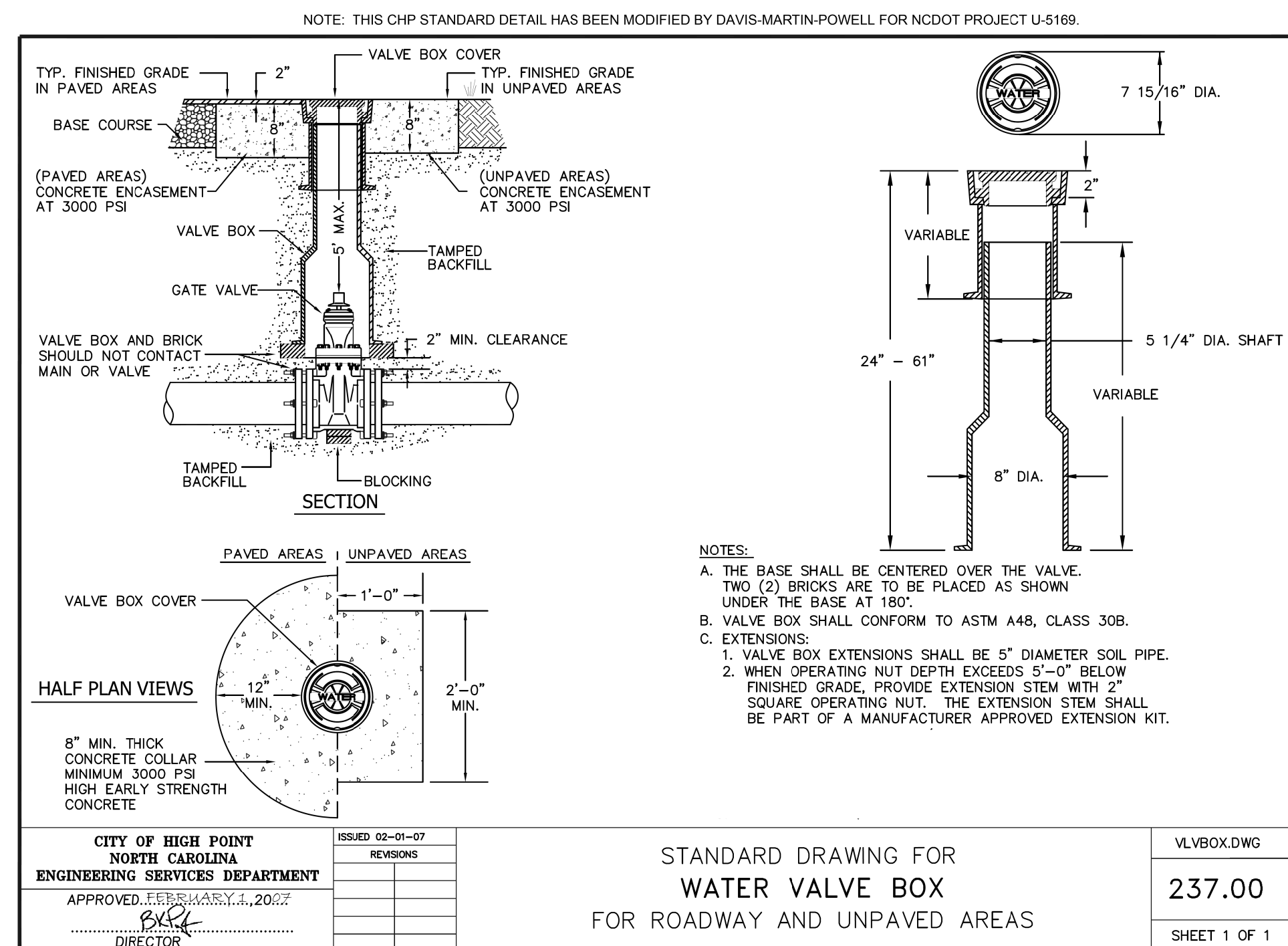
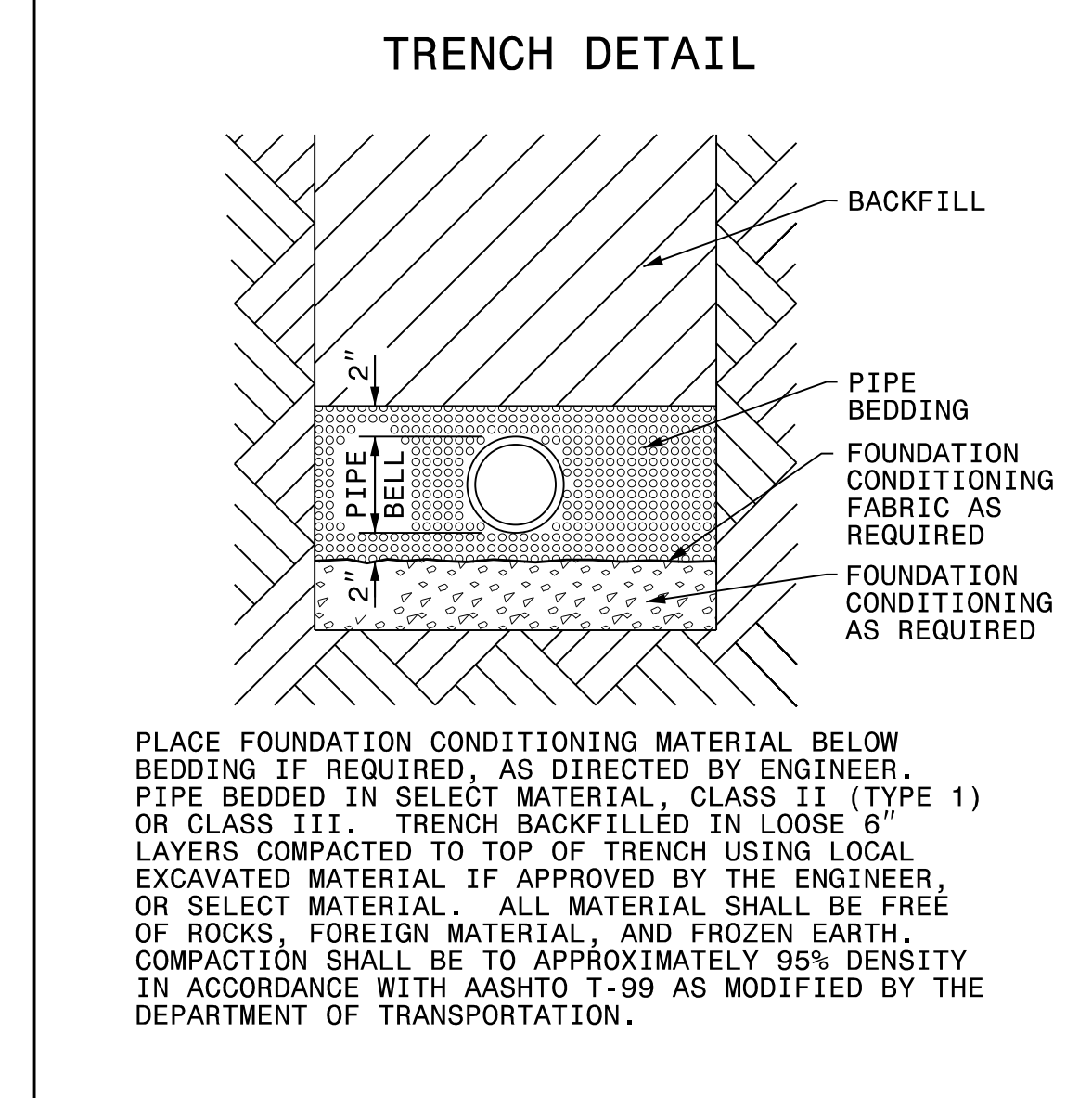
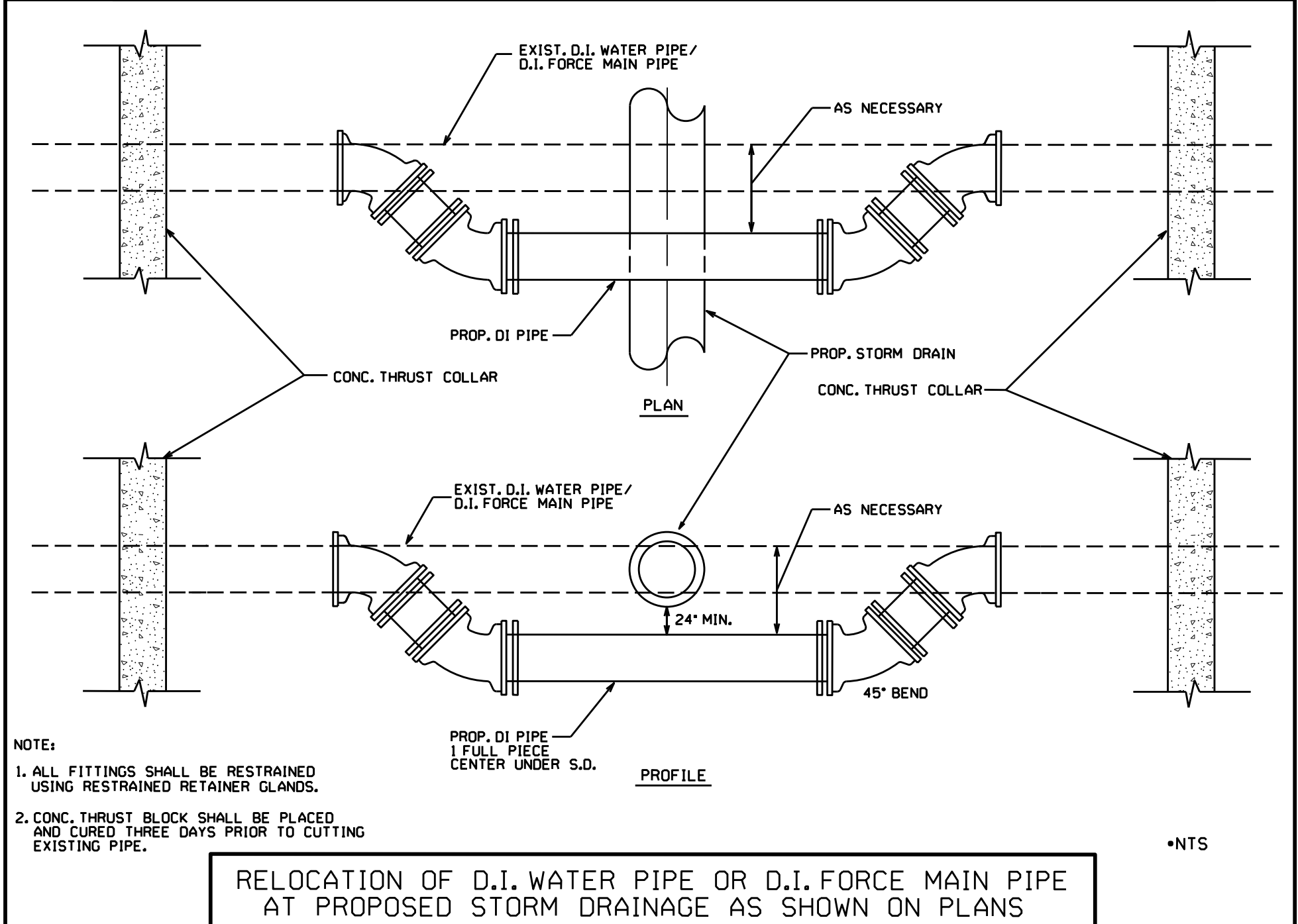
## UTILITY CONSTRUCTION

DOCUMENT NOT CONSIDERED FINAL UNLESS ALL SIGNATURES COMPLETED



MAXIMUM TRENCH WIDTH AT TOP OF PIPE

NOMINAL PIPE SIZE (INCHES)	TRENCH WIDTH (INCHES)	NOMINAL PIPE SIZE (INCHES)	TRENCH WIDTH (INCHES)
4	28	20	44
6	30	24	48
8	32	30	54
10	34	36	60
12	36	42	66
14	38	48	72
16	40	54	78
18	42		

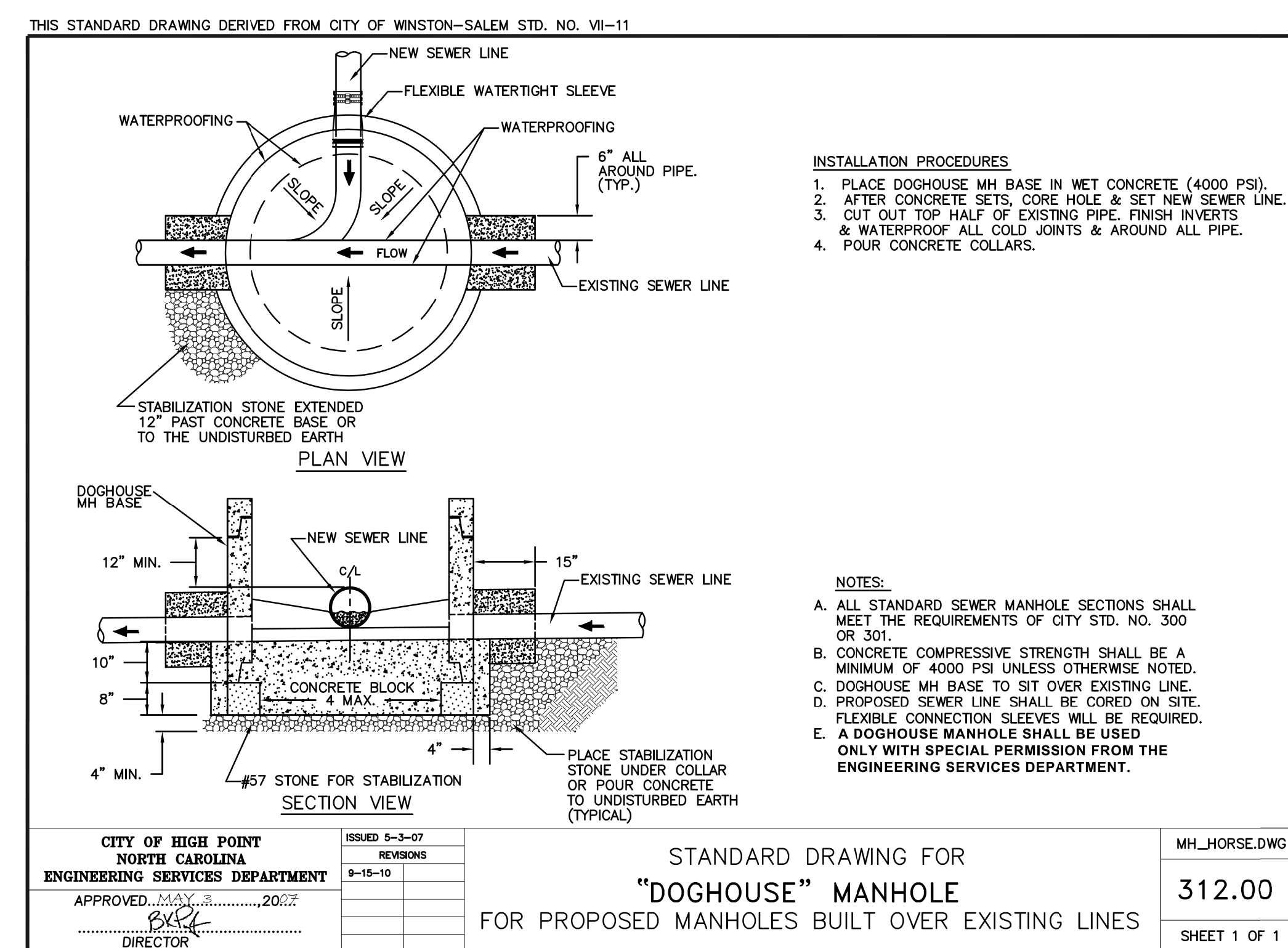
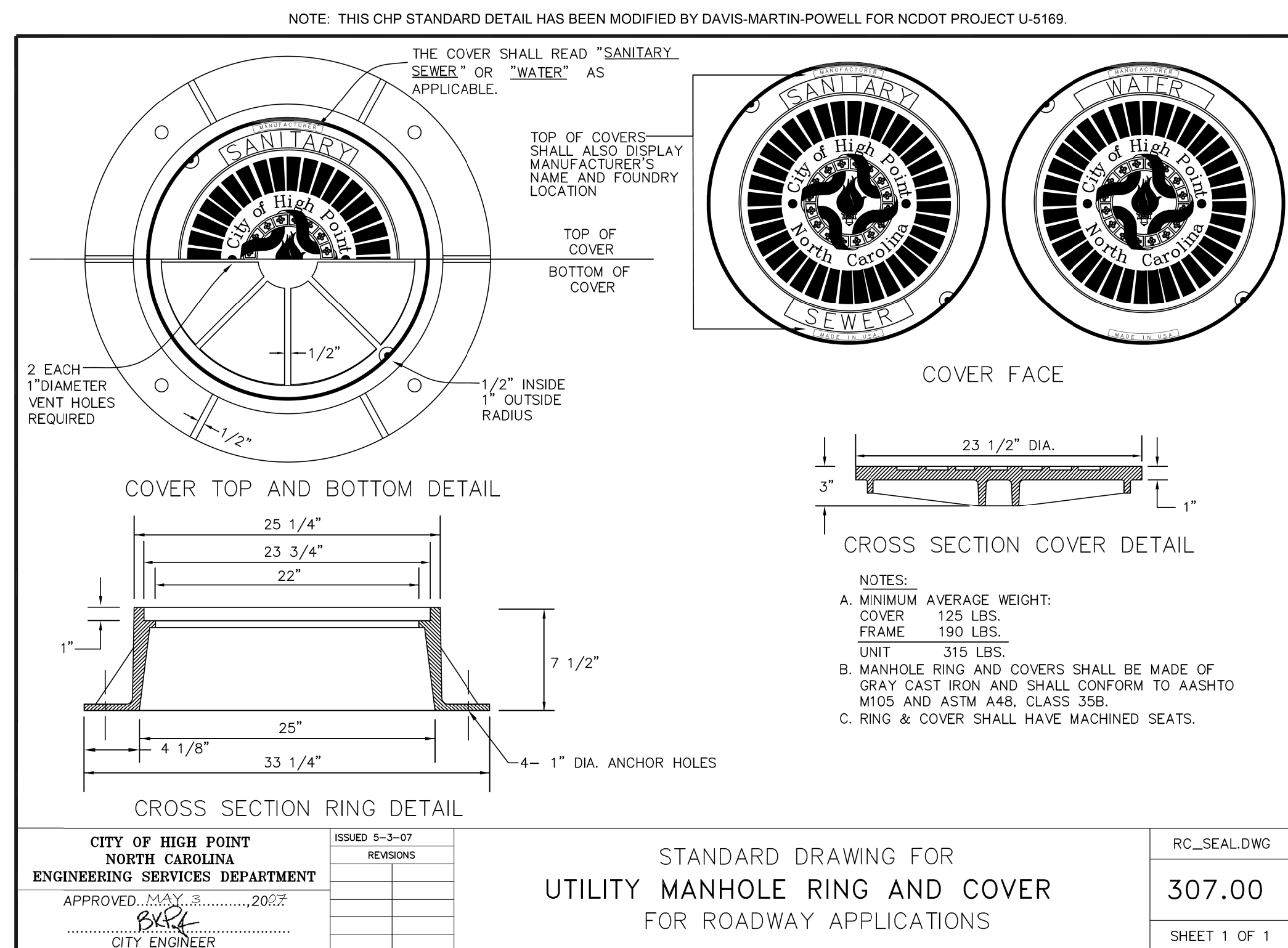
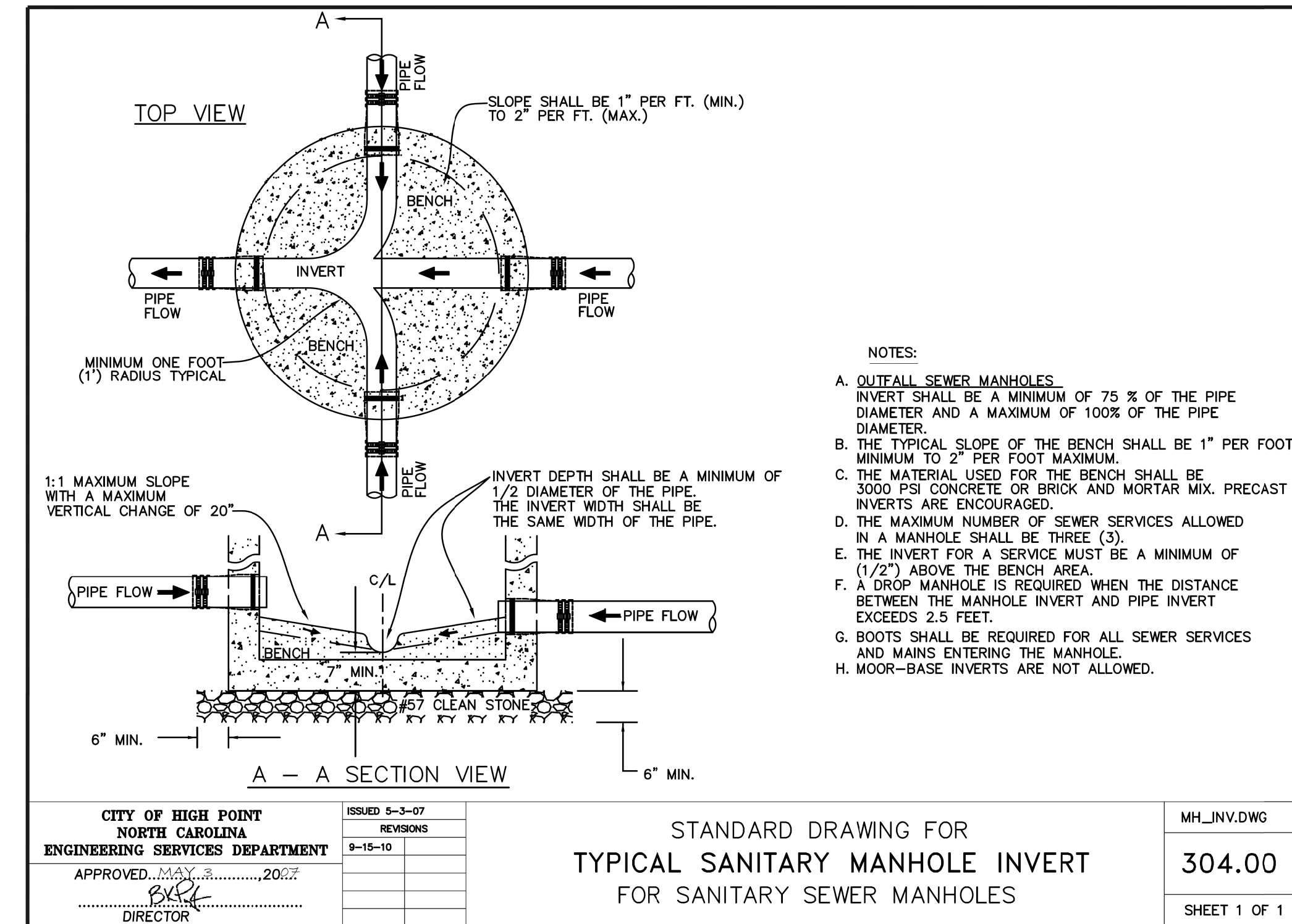
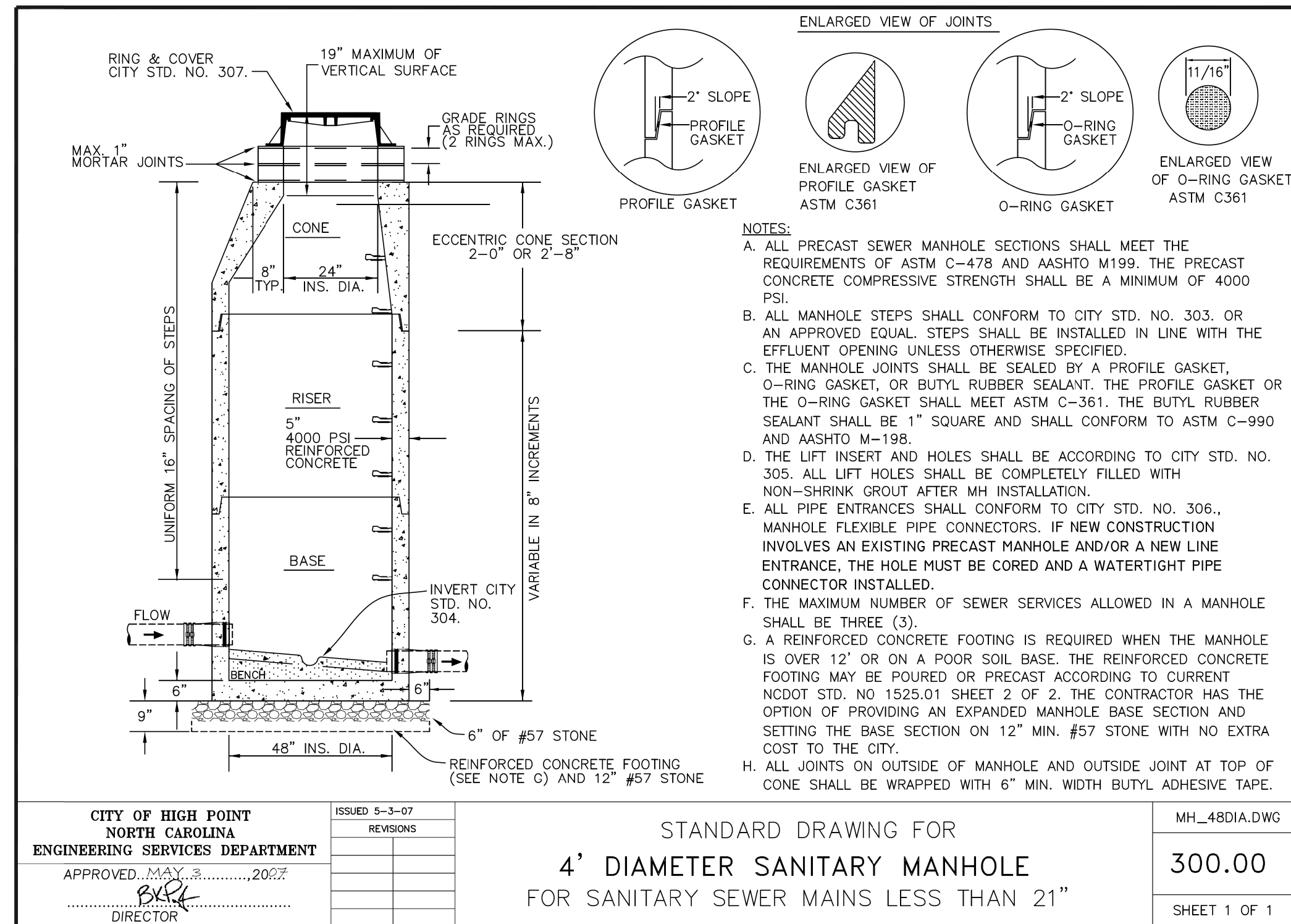


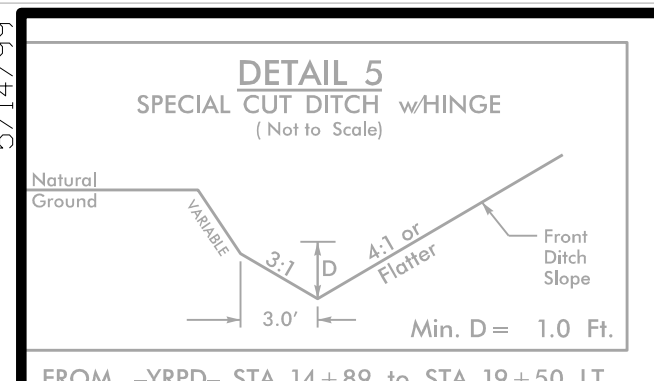
# PROJECT TYPICAL DETAILS

PROJECT REFERENCE NO.	SHEET NO.
U-5169	UC-3B
DESIGNED BY: DMP	
DRAWN BY: DMP	
CHECKED BY: DMP	
APPROVED BY:	
REVISED:	
NORTH CAROLINA DEPARTMENT OF TRANSPORTATION	3/14/2018
UTILITIES ENGINEERING SEC. PHONE: (919) 707-6690 FAX: (919) 250-4151	UTILITY CONSTRUCTION PLANS ONLY

## UTILITY CONSTRUCTION

DOCUMENT NOT CONSIDERED FINAL UNLESS ALL SIGNATURES COMPLETED





FROM -LNB- STA. 10+40 TO STA. 10+65 LT  
FROM -YRPC- STA. 21+00 TO STA. 24+00 RT

NAD 83/NA 2011  
-Y3-  
PI Sta 9+43.37  
Δ = 84' 22" 41.7" (LT)  
D = 57' 17" 44.8"  
L = 147.27'  
T = 90.64'  
R = 100.00'  
RO = SEE PLANS  
SE = SEE PLANS

-YRPB-  
Sta 12+07.82  
Δ = 0' 57" 39.9"  
D = 104.00'  
L = 69.33'  
T = 34.67'  
PI Sta 14+61.48  
Δ = 8' 04" 54.4" (LT)  
D = 1' 50" 53.7"  
L = 437.27'  
T = 219.00'  
R = 3,100.00'  
RO = SEE PLANS  
SE = SEE PLANS

PIs Sta 16+97.08  
Δs = 0' 28" 50.0"  
Ls = 52.00'  
LT = 34.67'  
ST = 17.33'

PROP. - 440 LF OF 18" ENCASEMENT PIPE (STEEL, MIN. W.T.=0.250"), 440 LF BORE AND JACK OF 18"

CONTRACTOR SHALL INSTALL COLUMNS FOR PROPOSED NOISE WALL TO AVOID CONFLICTS WITH EXISTING 30" SANITARY SEWER LINE

THE ESTIMATED QUANTITY OF D.I. WATER PIPE FITTINGS ON THIS PLAN SHEET IS 3,670 POUNDS. THE ACTUAL QUANTITY AND TYPE OF FITTINGS WILL VARY BASED ON FIELD CONDITIONS.

PROP. - 71 LF OF 6" WATER LINE, 1 - 16"x6" TAPPING SLEEVE AND VALVE

PROP. - 70 LF OF 16" WATER LINE

PROP. - 113 LF OF 16" WATER LINE (SEE UC-10 FOR PROFILE)

PROP. MH 3 (4' DIA.) STA. 8+19.09, LINE PS100 -YRPC- STA. 20+50.74, 65.7 FT. RT.

ABANDON 403 LF 8" UTILITY PIPE

ABANDON 1 UTILITY MH 8" UTILITY PIPE

PROP. - 40 LF OF 8" SANITARY GRAVITY SEWER

PROP. MH 4 (4' DIA.) STA. 8+59.55, LINE PS100 -YRPC- STA. 20+84.91, 83.0 FT. RT.

PROP. - 176 LF OF 8" SANITARY GRAVITY SEWER

PROP. MH 1 (4' DIA., DOGHOUSE STYLE) STA. 0+00.00, LINE PS100 -YRPC- STA. 12+11.60, 64.0 FT. RT.

PROP. MH 2 (4' DIA.) STA. 3+42.09, LINE PS100 -YRPC- STA. 15+72.85, 33.9 FT. RT.

PROP. - 477 LF OF 8" SANITARY GRAVITY SEWER

PROP. MH 4A (4' DIA.) STA. 10+35.94, LINE PS100 -YRPC- STA. 22+35.66, 95.0 FT. RT.

PROP. - 303 LF OF 8" SANITARY GRAVITY SEWER

PROJECT REFERENCE NO.	SHEET NO.
U-5169	UC-4
DESIGNED BY: DMP	
DRAWN BY: DMP	
CHECKED BY: DMP	
APPROVED BY:	
REVISED:	
NORTH CAROLINA DEPARTMENT OF TRANSPORTATION UTILITIES ENGINEERING SECTION PHONE: (919) 707-6690 FAX: (919) 250-4151	
UTILITY CONSTRUCTION PLANS ONLY	

UTILITY CONSTRUCTION DOCUMENT NOT CONSIDERED FINAL UNLESS ALL SIGNATURES COMPLETED

(SURFACE MOUNTED) END GLARE SCREEN +72.76 -YLPA- PROP. 5' SIDEWALK -YLPA- CS Sta. 18+10.83 -YLPA- CS Sta. 18+54.65

**A**

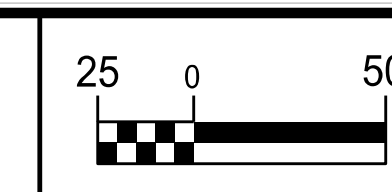
**B**

**C**

U-5169

UTILITY CONSTRUCTION PLANS PREPARED BY:  
**DAVIS • MARTIN • POWELL**  
ENGINEERS & SURVEYORS  
6415 OLD PLANK RD., HIGH POINT, NC 27265  
PHONE: (336) 886-4821 FAX: (336) 886-4458  
WWW.DMP-INC.COM LICENSE: F-0245

5/14/2018

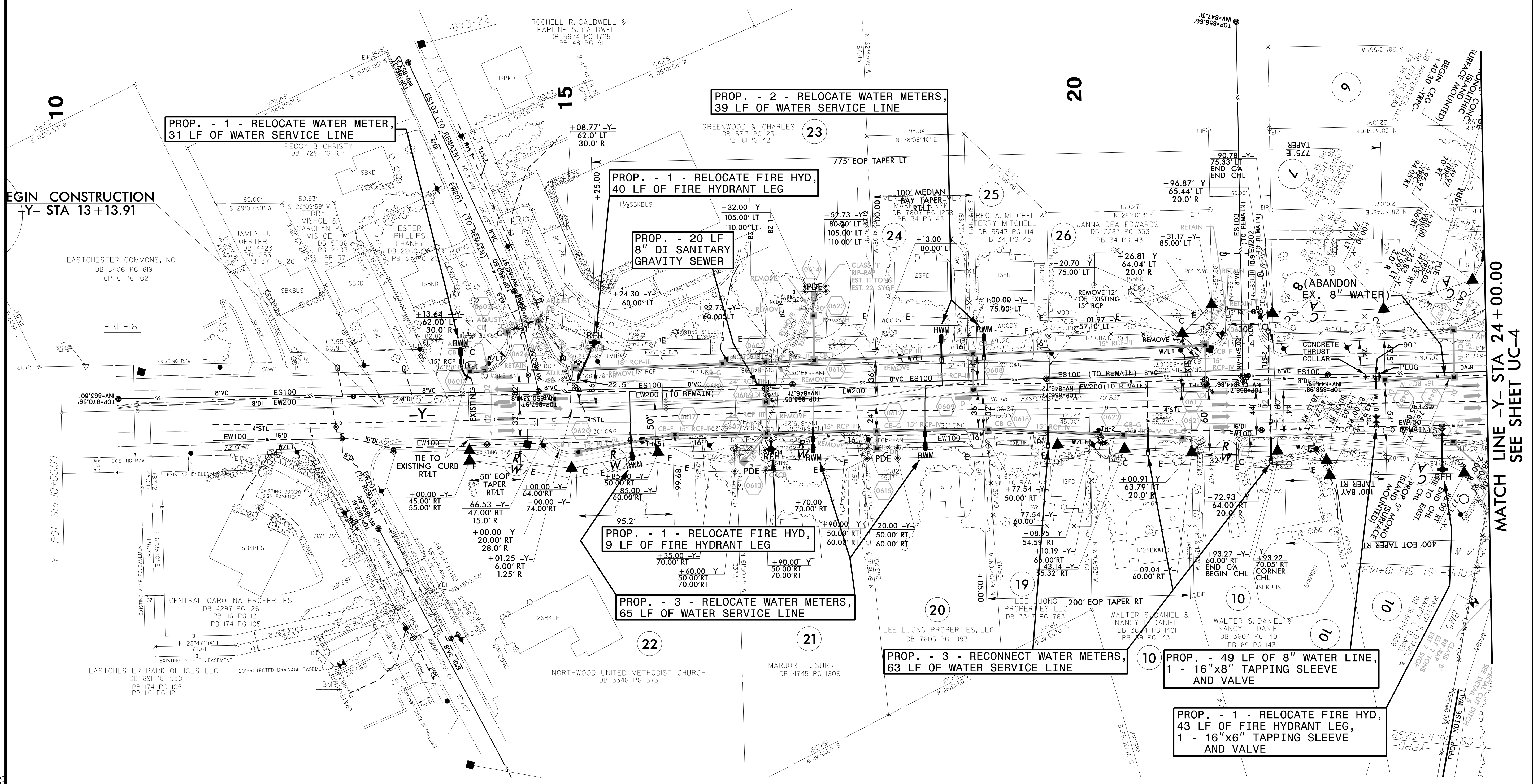
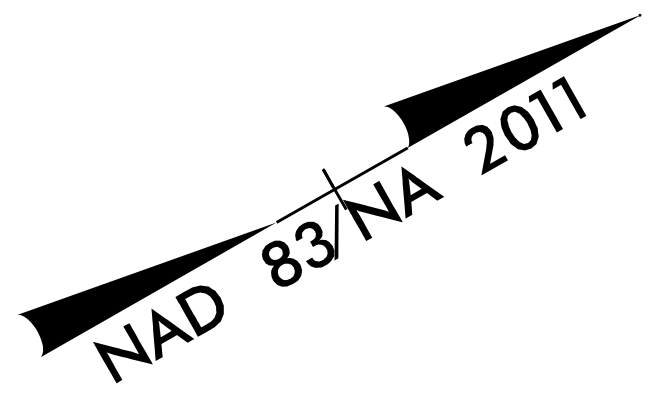


PROJECT REFERENCE NO.	SHEET NO.
U-5169	UC-5
DESIGNED BY: DMP	
DRAWN BY: DMP	
CHECKED BY: DMP	
APPROVED BY:	
REVISED:	
NORTH CAROLINA DEPARTMENT OF TRANSPORTATION	3/14/2018
UTILITIES ENGINEERING SEC. PHONE: (919) 707-6690 FAX: (919) 250-4151	UTILITY CONSTRUCTION PLANS ONLY

### UTILITY CONSTRUCTION

DOCUMENT NOT CONSIDERED FINAL UNLESS ALL SIGNATURES COMPLETED

THE ESTIMATED QUANTITY OF D.I. WATER PIPE FITTINGS ON THIS PLAN SHEET IS 330 POUNDS. THE ACTUAL QUANTITY AND TYPE OF FITTINGS WILL VARY BASED ON FIELD CONDITIONS.



BEGIN CONSTRUCTION  
-Y- STA 13+13.91

-Y- POT Sta. 10+00.00

MATCH LINE -Y- STA 24+00.00  
SEE SHEET UC-4

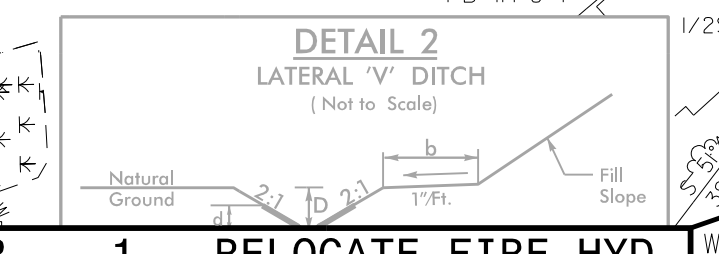
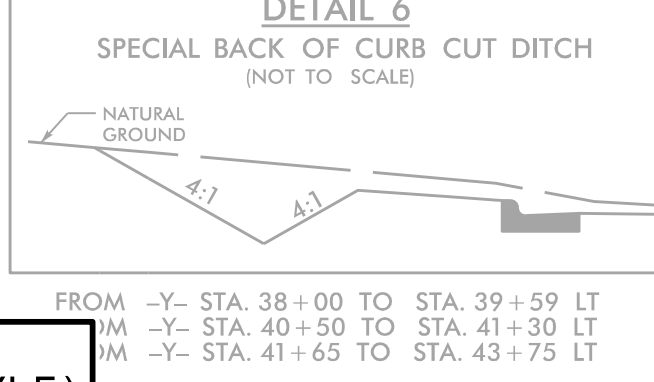
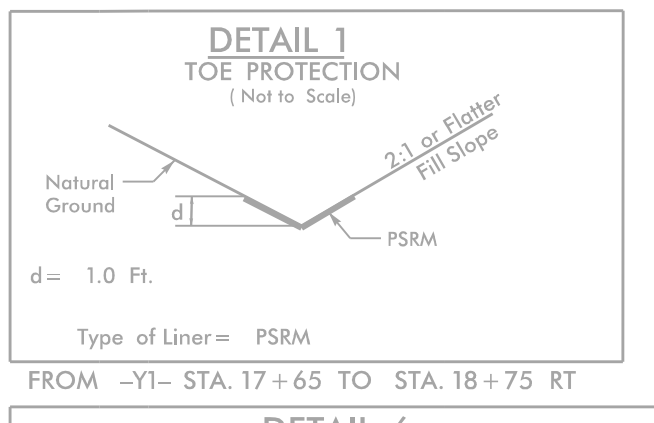
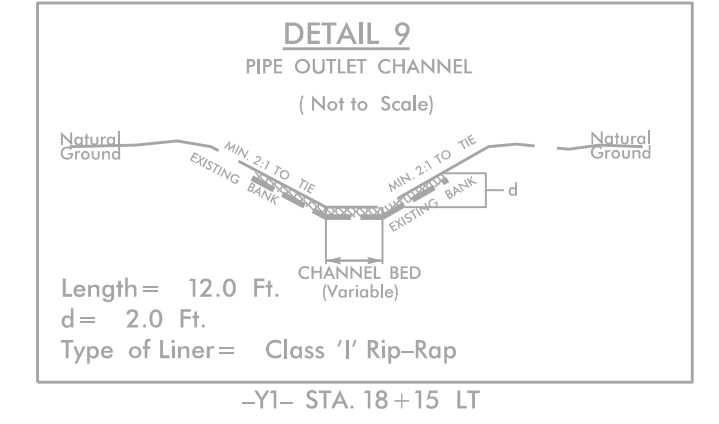
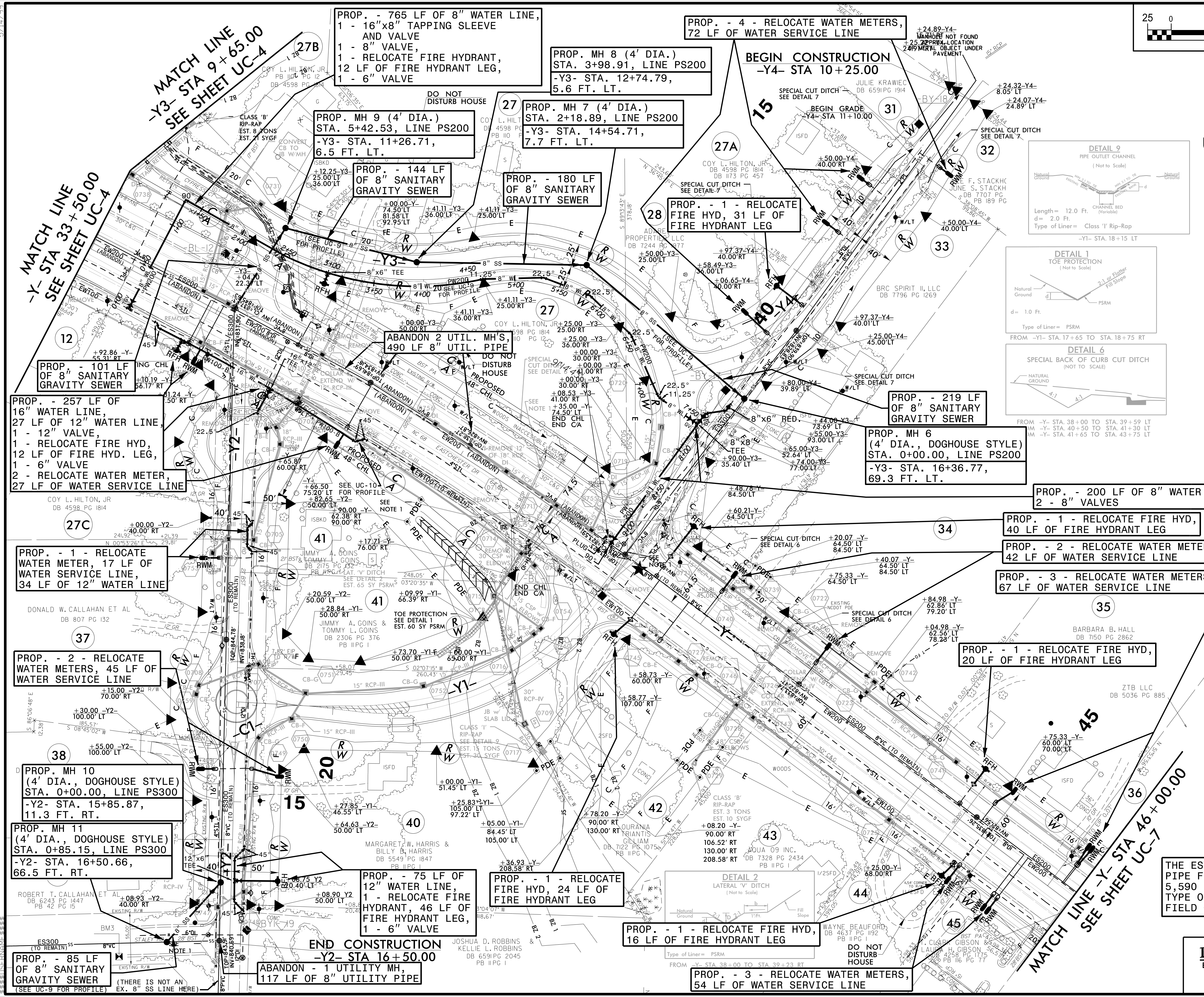




PROJECT REFERENCE NO.	SHEET NO.
U-5169	UC-6
DESIGNED BY: DMP	
DRAWN BY: DMP	
CHECKED BY: DMP	
APPROVED BY:	
REVISED:	NORTH CAROLINA DEPARTMENT OF TRANSPORTATION UTILITIES ENGINEERING SEC. PHONE: (919) 707-6690 FAX: (919) 250-4151
UTILITY CONSTRUCTION PLANS ONLY	

**UTILITY CONSTRUCTION**  
DOCUMENT NOT CONSIDERED FINAL UNLESS ALL SIGNATURES COMPLETED

NAD 83/NA 2011



PROP. - 101 LF OF 8" SANITARY GRAVITY SEWER

PROP. - 257 LF OF 16" WATER LINE, 27 LF OF 12" WATER LINE, 1 - 12" VALVE, 12 LF OF FIRE HYD. LEG, 1 - 6" VALVE, 2 - RELOCATE WATER METER, 27 LF OF WATER SERVICE LINE

PROP. - 1 - RELOCATE WATER METER, 17 LF OF WATER SERVICE LINE, 34 LF OF 12" WATER LINE

PROP. - 2 - RELOCATE WATER METERS, 45 LF OF WATER SERVICE LINE

PROP. MH 10 (4' DIA., DOGHOUSE STYLE) STA. 0+00.00, LINE PS300 -Y2- STA. 15+85.87, 11.3 FT. RT.

PROP. MH 11 (4' DIA., DOGHOUSE STYLE) STA. 0+85.15, LINE PS300 -Y2- STA. 16+50.66, 66.5 FT. RT.

PROP. - 85 LF OF 8" SANITARY GRAVITY SEWER (THERE IS NOT AN EX. 8" SS LINE HERE)

PROP. - 765 LF OF 8" WATER LINE, 1 - 16"x8" TAPPING SLEEVE AND VALVE, 1 - 8" VALVE, 1 - RELOCATE FIRE HYDRANT, 12 LF OF FIRE HYDRANT LEG, 1 - 6" VALVE

PROP. MH 9 (4' DIA.) STA. 5+42.53, LINE PS200 -Y3- STA. 11+26.71, 6.5 FT. LT.

PROP. - 144 LF OF 8" SANITARY GRAVITY SEWER

PROP. MH 7 (4' DIA.) STA. 2+18.89, LINE PS200 -Y3- STA. 14+54.71, 7.7 FT. LT.

PROP. - 180 LF OF 8" SANITARY GRAVITY SEWER

PROP. - 4 - RELOCATE WATER METERS, 72 LF OF WATER SERVICE LINE

PROP. - 1 - RELOCATE FIRE HYD, 31 LF OF FIRE HYDRANT LEG

PROP. - 219 LF OF 8" SANITARY GRAVITY SEWER

PROP. MH 6 (4' DIA., DOGHOUSE STYLE) STA. 0+00.00, LINE PS200 -Y3- STA. 16+36.77, 69.3 FT. LT.

PROP. - 200 LF OF 8" WATER LINE, 2 - 8" VALVES

PROP. - 1 - RELOCATE FIRE HYD, 40 LF OF FIRE HYDRANT LEG

PROP. - 2 - RELOCATE WATER METERS, 42 LF OF WATER SERVICE LINE

PROP. - 3 - RELOCATE WATER METERS, 67 LF OF WATER SERVICE LINE

PROP. - 1 - RELOCATE FIRE HYD, 20 LF OF FIRE HYDRANT LEG

PROP. - 75 LF OF 12" WATER LINE, 1 - RELOCATE FIRE HYDRANT, 46 LF OF FIRE HYDRANT LEG, 1 - 6" VALVE

PROP. - 1 - RELOCATE FIRE HYD, 24 LF OF FIRE HYDRANT LEG

PROP. - 1 - RELOCATE FIRE HYD, 16 LF OF FIRE HYDRANT LEG

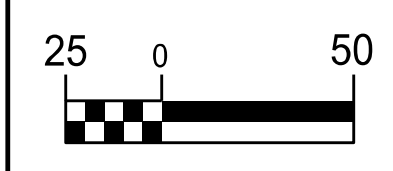
PROP. - 3 - RELOCATE WATER METERS, 54 LF OF WATER SERVICE LINE

ABANDON - 1 UTILITY MH, 117 LF OF 8" UTILITY PIPE

THE ESTIMATED QUANTITY OF D.I. WATER PIPE FITTINGS ON THIS PLAN SHEET IS 5,590 POUNDS. THE ACTUAL QUANTITY AND TYPE OF FITTINGS WILL VARY BASED ON FIELD CONDITIONS.

UTILITY CONSTRUCTION PLANS PREPARED BY:  
**DAVIS • MARTIN • POWELL**  
 ENGINEERS & SURVEYORS   
 6415 OLD PLANK RD., HIGH POINT, NC 27265  
 PHONE: (336) 886-4821 FAX: (336) 886-4458  
 WWW.DMP-INC.COM LICENSE: F-0245

5/14/2011

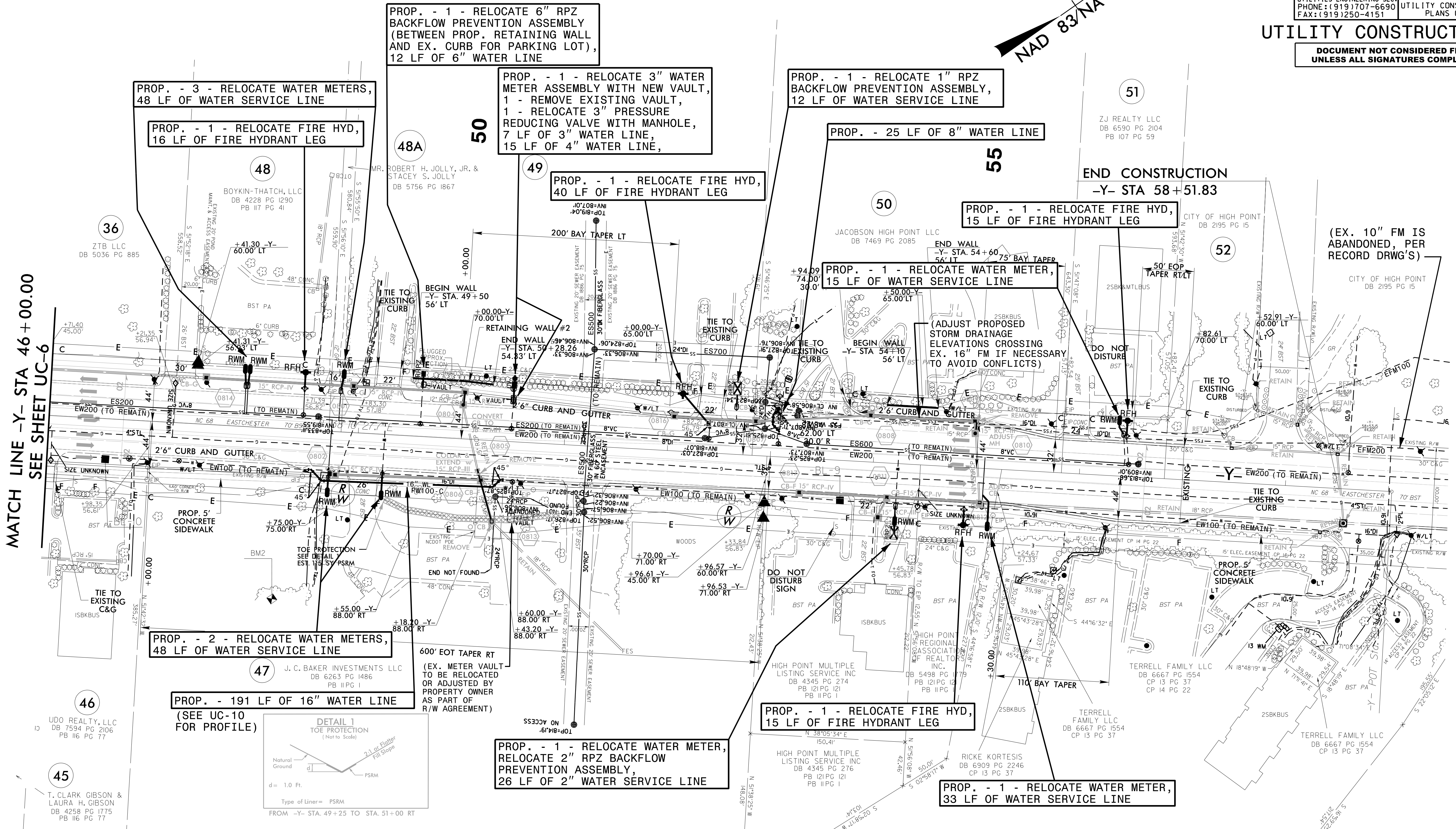
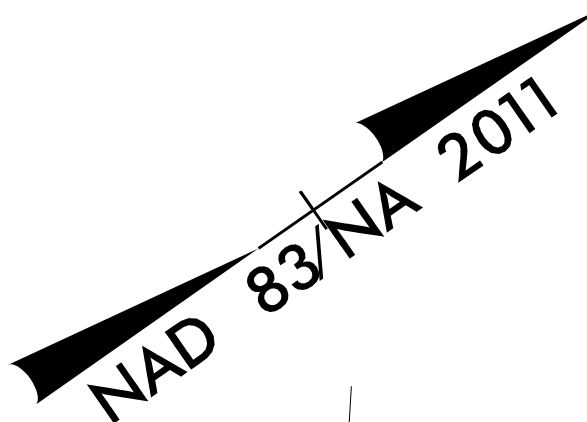


PROJECT REFERENCE NO.	U-5169	SHEET NO.	UC-7
DESIGNED BY:	DMP		
DRAWN BY:	DMP		
CHECKED BY:	DMP		
APPROVED BY:			
REVISED:			
NORTH CAROLINA DEPARTMENT OF TRANSPORTATION		4/13/2011	UTILITY CONSTRUCTION PLANS ONLY
UTILITIES ENGINEERING SEC. PHONE: (919) 707-6690 FAX: (919) 250-4151			

### UTILITY CONSTRUCTION

DOCUMENT NOT CONSIDERED FINAL UNLESS ALL SIGNATURES COMPLETED

THE ESTIMATED QUANTITY OF D.I. WATER PIPE FITTINGS ON THIS PLAN SHEET IS 2,440 POUNDS. THE ACTUAL QUANTITY AND TYPE OF FITTINGS WILL VARY BASED ON FIELD CONDITIONS.



PROP. - 3 - RELOCATE WATER METERS, 48 LF OF WATER SERVICE LINE

PROP. - 1 - RELOCATE FIRE HYD, 16 LF OF FIRE HYDRANT LEG

PROP. - 1 - RELOCATE 6" RPZ BACKFLOW PREVENTION ASSEMBLY (BETWEEN PROP. RETAINING WALL AND EX. CURB FOR PARKING LOT), 12 LF OF 6" WATER LINE

PROP. - 1 - RELOCATE 3" WATER METER ASSEMBLY WITH NEW VAULT, 1 - REMOVE EXISTING VAULT, 1 - RELOCATE 3" PRESSURE REDUCING VALVE WITH MANHOLE, 7 LF OF 3" WATER LINE, 15 LF OF 4" WATER LINE,

PROP. - 1 - RELOCATE FIRE HYD, 40 LF OF FIRE HYDRANT LEG

PROP. - 1 - RELOCATE 1" RPZ BACKFLOW PREVENTION ASSEMBLY, 12 LF OF WATER SERVICE LINE

PROP. - 25 LF OF 8" WATER LINE

PROP. - 1 - RELOCATE FIRE HYD, 15 LF OF FIRE HYDRANT LEG

PROP. - 1 - RELOCATE WATER METER, 15 LF OF WATER SERVICE LINE

(ADJUST PROPOSED STORM DRAINAGE ELEVATIONS CROSSING EX. 16" FM IF NECESSARY TO AVOID CONFLICTS)

PROP. - 2 - RELOCATE WATER METERS, 48 LF OF WATER SERVICE LINE

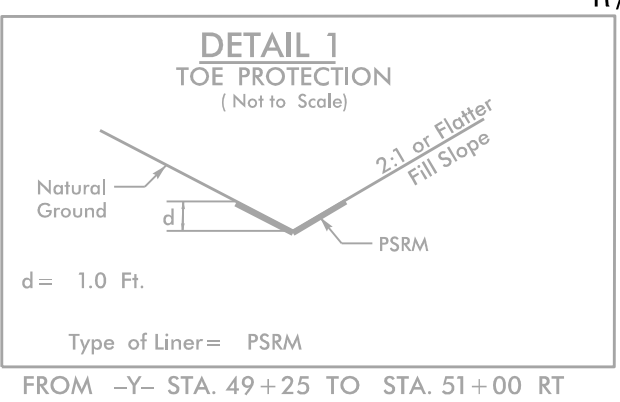
PROP. - 191 LF OF 16" WATER LINE (SEE UC-10 FOR PROFILE)

600' EOT TAPER RT (EX. METER VAULT TO BE RELOCATED OR ADJUSTED BY PROPERTY OWNER AS PART OF R/W AGREEMENT)

PROP. - 1 - RELOCATE WATER METER, RELOCATE 2" RPZ BACKFLOW PREVENTION ASSEMBLY, 26 LF OF 2" WATER SERVICE LINE

PROP. - 1 - RELOCATE FIRE HYD, 15 LF OF FIRE HYDRANT LEG

PROP. - 1 - RELOCATE WATER METER, 33 LF OF WATER SERVICE LINE

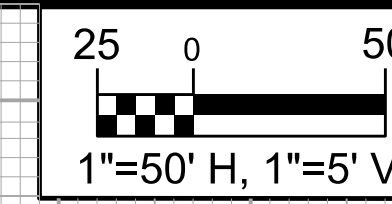


MATCH LINE -Y- STA 46+00.00 SEE SHEET UC-6

END CONSTRUCTION -Y- STA 58+51.83

(EX. 10" FM IS ABANDONED, PER RECORD DRWG'S)

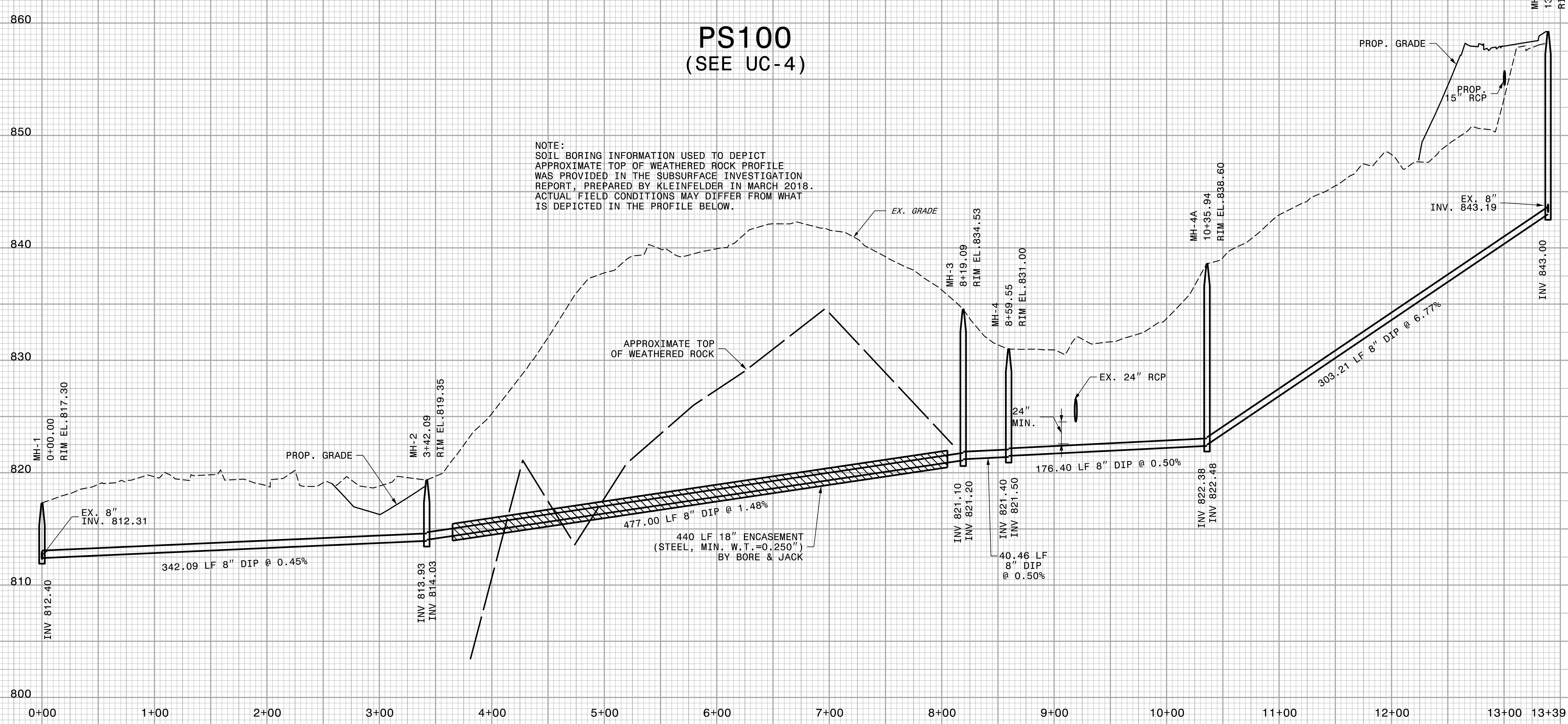
5/14/99



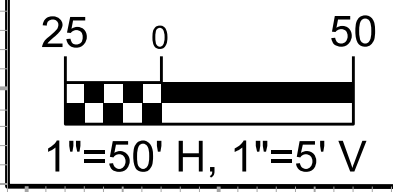
PROJECT REFERENCE NO.	SHEET NO.
U-5169	UC-8
DESIGNED BY: DMP	
DRAWN BY: DMP	
CHECKED BY: DMP	
APPROVED BY:	
REVISED:	
NORTH CAROLINA DEPARTMENT OF TRANSPORTATION	3/14/2018
UTILITIES ENGINEERING SEC. PHONE: (919) 707-6690 FAX: (919) 250-4151	UTILITY CONSTRUCTION PLANS ONLY

### UTILITY CONSTRUCTION

DOCUMENT NOT CONSIDERED FINAL  
UNLESS ALL SIGNATURES COMPLETED



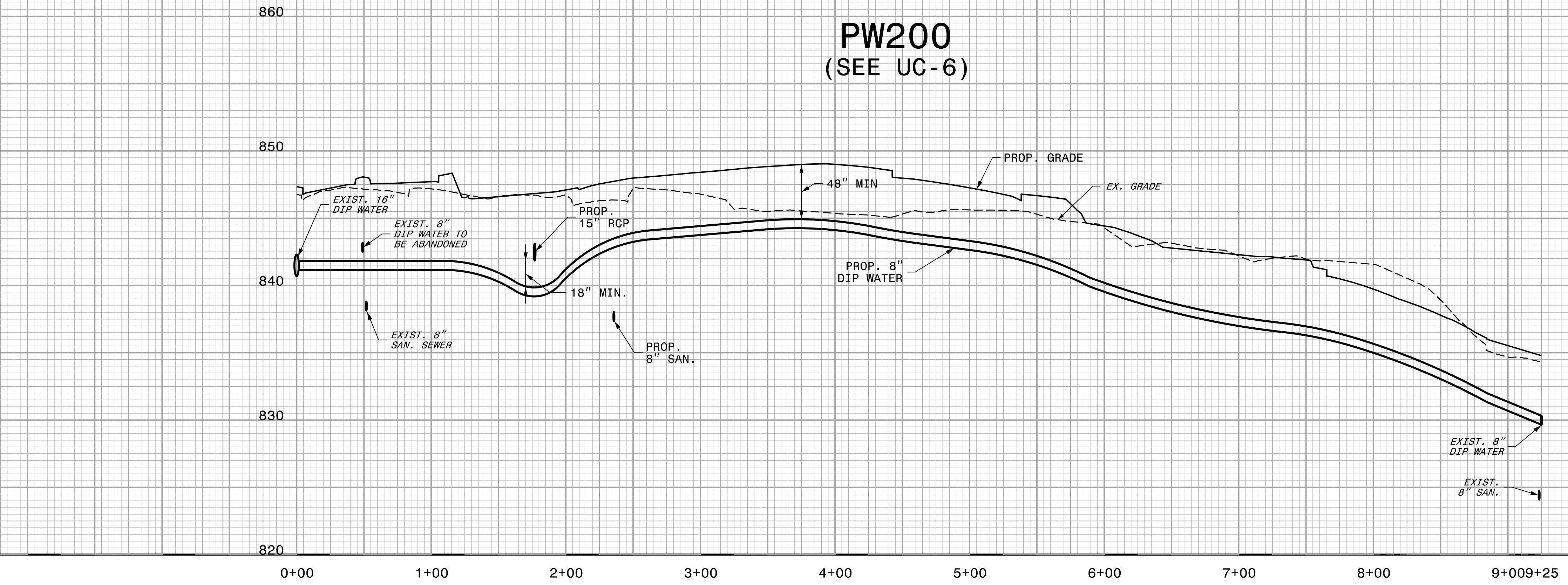
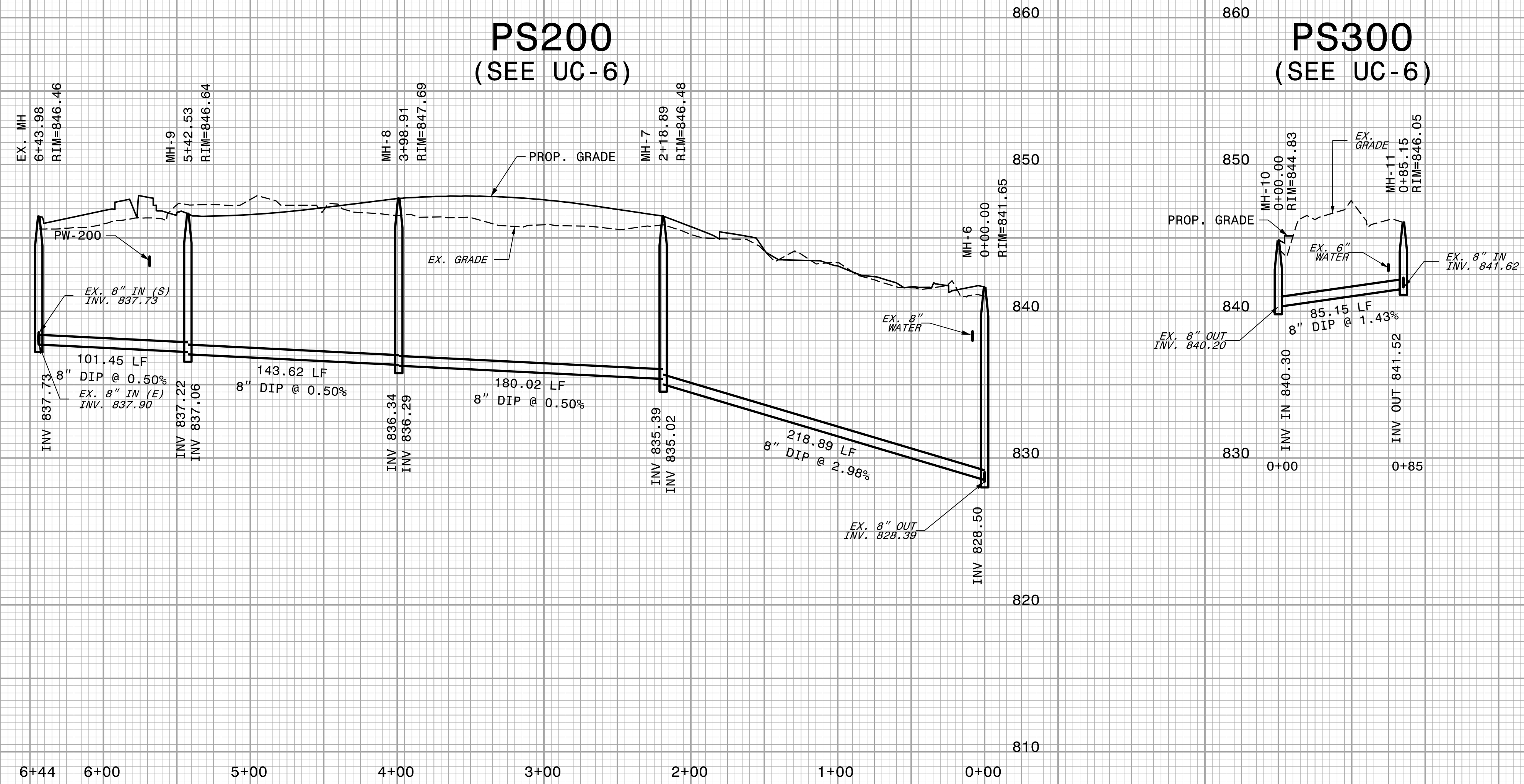
5/14/99



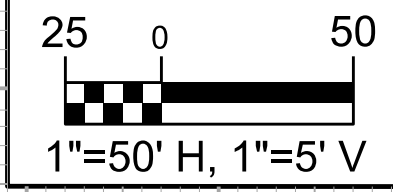
PROJECT REFERENCE NO.	SHEET NO.
U-5169	UC-9
DESIGNED BY: DMP	
DRAWN BY: DMP	
CHECKED BY: DMP	
APPROVED BY:	
REVISED:	NORTH CAROLINA DEPARTMENT OF TRANSPORTATION UTILITIES ENGINEERING SEC. PHONE: (919) 707-6690 FAX: (919) 250-4151
UTILITY CONSTRUCTION PLANS ONLY	

### UTILITY CONSTRUCTION

DOCUMENT NOT CONSIDERED FINAL  
UNLESS ALL SIGNATURES COMPLETED



5/14/99



PROJECT REFERENCE NO. <b>U-5169</b>	SHEET NO. <b>UC-10</b>
DESIGNED BY: <b>DMP</b>	
DRAWN BY: <b>DMP</b>	
CHECKED BY: <b>DMP</b>	
APPROVED BY:	
REVISED:	
NORTH CAROLINA DEPARTMENT OF TRANSPORTATION UTILITIES ENGINEERING SEC. PHONE: (919) 707-6690 FAX: (919) 250-4151	
UTILITY CONSTRUCTION PLANS ONLY	

**UTILITY CONSTRUCTION**

**DOCUMENT NOT CONSIDERED FINAL  
UNLESS ALL SIGNATURES COMPLETED**

