

FYA SIGNAL OUTPUT REMAPPING ASSIGNMENT PROGRAMMING DETAIL FOR OVERLAPS "A" AND "C"

(program controller as shown below)

FROM MAIN MENU PRESS '6' (OUTPUTS), THEN '1' (OUTPUT ASSIGNMENTS), WITH CURSOR IN "OUTPUT ASSIGNMENT#" POSITION, ENTER "14"

DISPLAY WILL NOW SHOW THE SPECIFIED OUTPUT ASSIGNED AS 'VEHICLE OVERLAP' AS SHOWN BELOW.

STEP 1

```

PAGE:1 C1 PIN:16 VEHICLE PHASE
OUTPUT ASSIGNMENT #.....14
FREQUENCY (0=DEFAULT) (0-25.5 HZ)...0.0
DUTY CYCLE (0=DEFAULT) (0 - 100%)...0
MODE (0=SOLID,1=FLASH)...0
SELECT ASSIGNMENT:
NOT ENABLED.....
VEHICLE PHASE.....Y
PEDESTRIAN PHASE.....
VEHICLE OVERLAP.....Y
PEDESTRIAN OVERLAP.....
WATCHDOG.....
DETECTOR RESET.....
ADVANCE BEACON.....
OUT OF PHASE FLASHER.....
CONTROLLER FLASH.....
RUN FREE.....
RESERVED.....
PREEMPT.....
SOFT PREEMPT.....
ANY PREEMPT.....
COORDINATION PLAN.....
OFFSET.....
PHASE CHECK.....
PHASE ON.....
PHASE NEXT.....
    
```

THE OUTPUT IS SET AS A VEHICLE PHASE BY DEFAULT. THIS "Y" WILL REMAIN UNTIL THE OUTPUT IS CHANGED. ENTER A "Y" FOR VEHICLE OVERLAP.

```

PAGE:1 C1 PIN:16 VEHICLE PHASE
SELECT VEHICLE OVERLAP (A=1,P=16)...1
SELECT COLOR(0=RED,1=YEL,2=GRN)...0
    
```

WHEN A 'Y' IS ENTERED FOR 'VEHICLE OVERLAP' THE SCREEN SHOWN ABOVE WILL APPEAR. ENTER DATA AS SHOWN. PRESS THE 'ENT' KEY AFTER INPUTTING DATA, THEN 'ESC'.

```

PAGE:1 C1 PIN:16 VEHICLE OVERLAP
OUTPUT ASSIGNMENT #.....14
FREQUENCY (0=DEFAULT) (0-25.5 HZ)...0.0
DUTY CYCLE (0=DEFAULT) (0 - 100%)...0
MODE (0=SOLID,1=FLASH)...0
SELECT ASSIGNMENT:
NOT ENABLED.....
VEHICLE PHASE.....
PEDESTRIAN PHASE.....
VEHICLE OVERLAP.....Y
PEDESTRIAN OVERLAP.....
WATCHDOG.....
DETECTOR RESET.....
ADVANCE BEACON.....
OUT OF PHASE FLASHER.....
CONTROLLER FLASH.....
RUN FREE.....
RESERVED.....
PREEMPT.....
SOFT PREEMPT.....
ANY PREEMPT.....
COORDINATION PLAN.....
OFFSET.....
PHASE CHECK.....
PHASE ON.....
PHASE NEXT.....
    
```

PRESS "+" KEY FOR OUTPUT 15

DISPLAY WILL NOW SHOW THE SPECIFIED OUTPUT ASSIGNED AS 'VEHICLE OVERLAP' AS SHOWN BELOW.

STEP 2

```

PAGE:1 C1 PIN:17 VEHICLE PHASE
OUTPUT ASSIGNMENT #.....15
FREQUENCY (0=DEFAULT) (0-25.5 HZ)...0.0
DUTY CYCLE (0=DEFAULT) (0 - 100%)...0
MODE (0=SOLID,1=FLASH)...0
SELECT ASSIGNMENT:
NOT ENABLED.....
VEHICLE PHASE.....Y
PEDESTRIAN PHASE.....
VEHICLE OVERLAP.....Y
PEDESTRIAN OVERLAP.....
WATCHDOG.....
DETECTOR RESET.....
ADVANCE BEACON.....
OUT OF PHASE FLASHER.....
CONTROLLER FLASH.....
RUN FREE.....
RESERVED.....
PREEMPT.....
SOFT PREEMPT.....
ANY PREEMPT.....
COORDINATION PLAN.....
OFFSET.....
PHASE CHECK.....
PHASE ON.....
PHASE NEXT.....
    
```

THE OUTPUT IS SET AS A VEHICLE PHASE BY DEFAULT. THIS "Y" WILL REMAIN UNTIL THE OUTPUT IS CHANGED. ENTER A "Y" FOR VEHICLE OVERLAP.

```

PAGE:1 C1 PIN:17 VEHICLE PHASE
SELECT VEHICLE OVERLAP (A=1,P=16)...1
SELECT COLOR(0=RED,1=YEL,2=GRN)...1
    
```

WHEN A 'Y' IS ENTERED FOR 'VEHICLE OVERLAP' THE SCREEN SHOWN ABOVE WILL APPEAR. ENTER DATA AS SHOWN. PRESS THE 'ENT' KEY AFTER INPUTTING DATA, THEN 'ESC'.

```

PAGE:1 C1 PIN:17 VEHICLE OVERLAP
OUTPUT ASSIGNMENT #.....15
FREQUENCY (0=DEFAULT) (0-25.5 HZ)...0.0
DUTY CYCLE (0=DEFAULT) (0 - 100%)...0
MODE (0=SOLID,1=FLASH)...0
SELECT ASSIGNMENT:
NOT ENABLED.....
VEHICLE PHASE.....
PEDESTRIAN PHASE.....
VEHICLE OVERLAP.....Y
PEDESTRIAN OVERLAP.....
WATCHDOG.....
DETECTOR RESET.....
ADVANCE BEACON.....
OUT OF PHASE FLASHER.....
CONTROLLER FLASH.....
RUN FREE.....
RESERVED.....
PREEMPT.....
SOFT PREEMPT.....
ANY PREEMPT.....
COORDINATION PLAN.....
OFFSET.....
PHASE CHECK.....
PHASE ON.....
PHASE NEXT.....
    
```

PRESS "+" KEY FOR OUTPUT 16

DISPLAY WILL NOW SHOW THE SPECIFIED OUTPUT ASSIGNED AS 'VEHICLE OVERLAP' AS SHOWN BELOW.

STEP 3

```

PAGE:1 C1 PIN:18 VEHICLE PHASE
OUTPUT ASSIGNMENT #.....16
FREQUENCY (0=DEFAULT) (0-25.5 HZ)...0.0
DUTY CYCLE (0=DEFAULT) (0 - 100%)...0
MODE (0=SOLID,1=FLASH)...0
SELECT ASSIGNMENT:
NOT ENABLED.....
VEHICLE PHASE.....Y
PEDESTRIAN PHASE.....
VEHICLE OVERLAP.....Y
PEDESTRIAN OVERLAP.....
WATCHDOG.....
DETECTOR RESET.....
ADVANCE BEACON.....
OUT OF PHASE FLASHER.....
CONTROLLER FLASH.....
RUN FREE.....
RESERVED.....
PREEMPT.....
SOFT PREEMPT.....
ANY PREEMPT.....
COORDINATION PLAN.....
OFFSET.....
PHASE CHECK.....
PHASE ON.....
PHASE NEXT.....
    
```

THE OUTPUT IS SET AS A VEHICLE PHASE BY DEFAULT. THIS "Y" WILL REMAIN UNTIL THE OUTPUT IS CHANGED. ENTER A "Y" FOR VEHICLE OVERLAP.

```

PAGE:1 C1 PIN:18 VEHICLE PHASE
SELECT VEHICLE OVERLAP (A=1,P=16)...1
SELECT COLOR(0=RED,1=YEL,2=GRN)...2
    
```

WHEN A 'Y' IS ENTERED FOR 'VEHICLE OVERLAP' THE SCREEN SHOWN ABOVE WILL APPEAR. ENTER DATA AS SHOWN. PRESS THE 'ENT' KEY AFTER INPUTTING DATA, THEN 'ESC'.

```

PAGE:1 C1 PIN:18 VEHICLE OVERLAP
OUTPUT ASSIGNMENT #.....16
FREQUENCY (0=DEFAULT) (0-25.5 HZ)...0.0
DUTY CYCLE (0=DEFAULT) (0 - 100%)...0
MODE (0=SOLID,1=FLASH)...0
SELECT ASSIGNMENT:
NOT ENABLED.....
VEHICLE PHASE.....
PEDESTRIAN PHASE.....
VEHICLE OVERLAP.....Y
PEDESTRIAN OVERLAP.....
WATCHDOG.....
DETECTOR RESET.....
ADVANCE BEACON.....
OUT OF PHASE FLASHER.....
CONTROLLER FLASH.....
RUN FREE.....
RESERVED.....
PREEMPT.....
SOFT PREEMPT.....
ANY PREEMPT.....
COORDINATION PLAN.....
OFFSET.....
PHASE CHECK.....
PHASE ON.....
PHASE NEXT.....
    
```

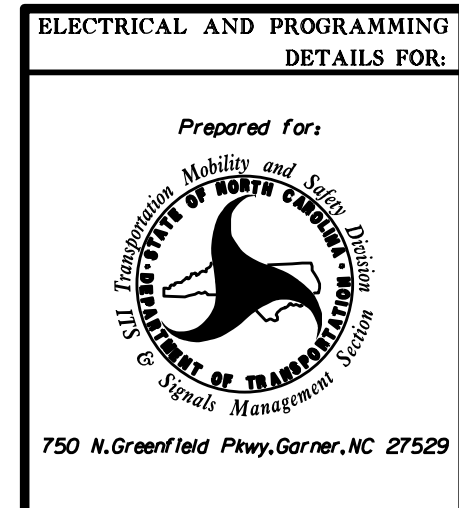
OUTPUT PROGRAMMING COMPLETE

THIS ELECTRICAL DETAIL IS FOR THE SIGNAL DESIGN: 07-1623T6
DESIGNED: May 2018
SEALED: May 18, 2018
REVISED: N/A

Project #: 170908

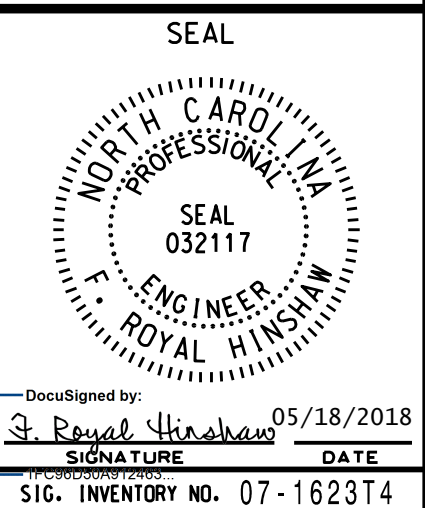


Temporary Design 6; TMP-38
Electrical Detail - Sheet 2 of 2



NC 68 (Eastchester Drive) at I-74 WB/ US 311 NB Ramps	
Division 7	Guilford County High Point
PLAN DATE: May 2018	REVIEWED BY: L. Boyer
PREPARED BY: A. Raviapati	REVIEWED BY: R. Hinshaw
REVISIONS	INIT. DATE

DOCUMENT NOT CONSIDERED FINAL UNLESS ALL SIGNATURES COMPLETED



DocuSigned by: R. Hinshaw
05/18/2018
SIG. INVENTORY NO. 07-1623T4