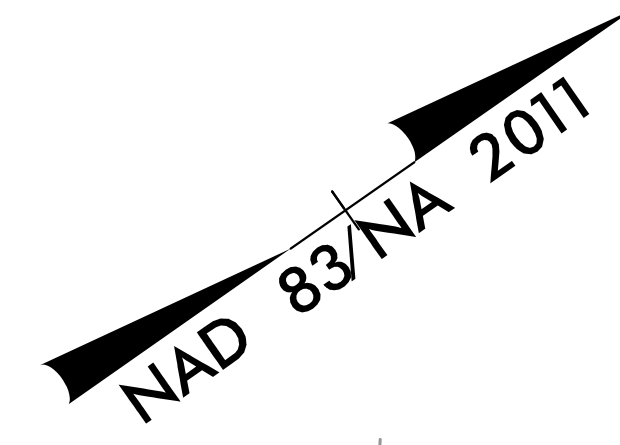


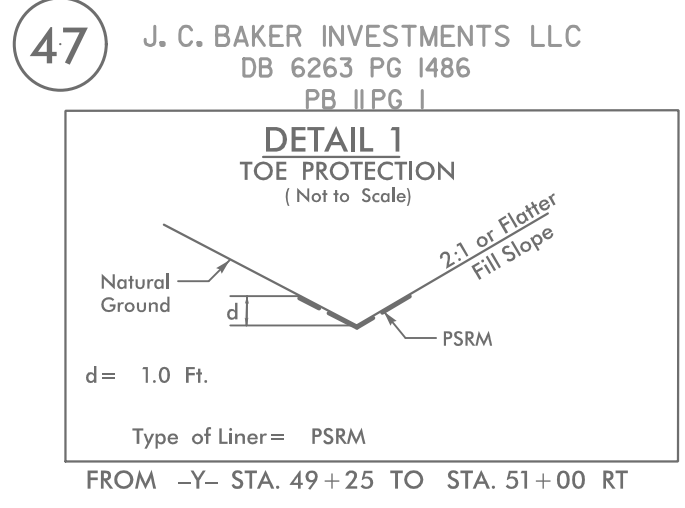
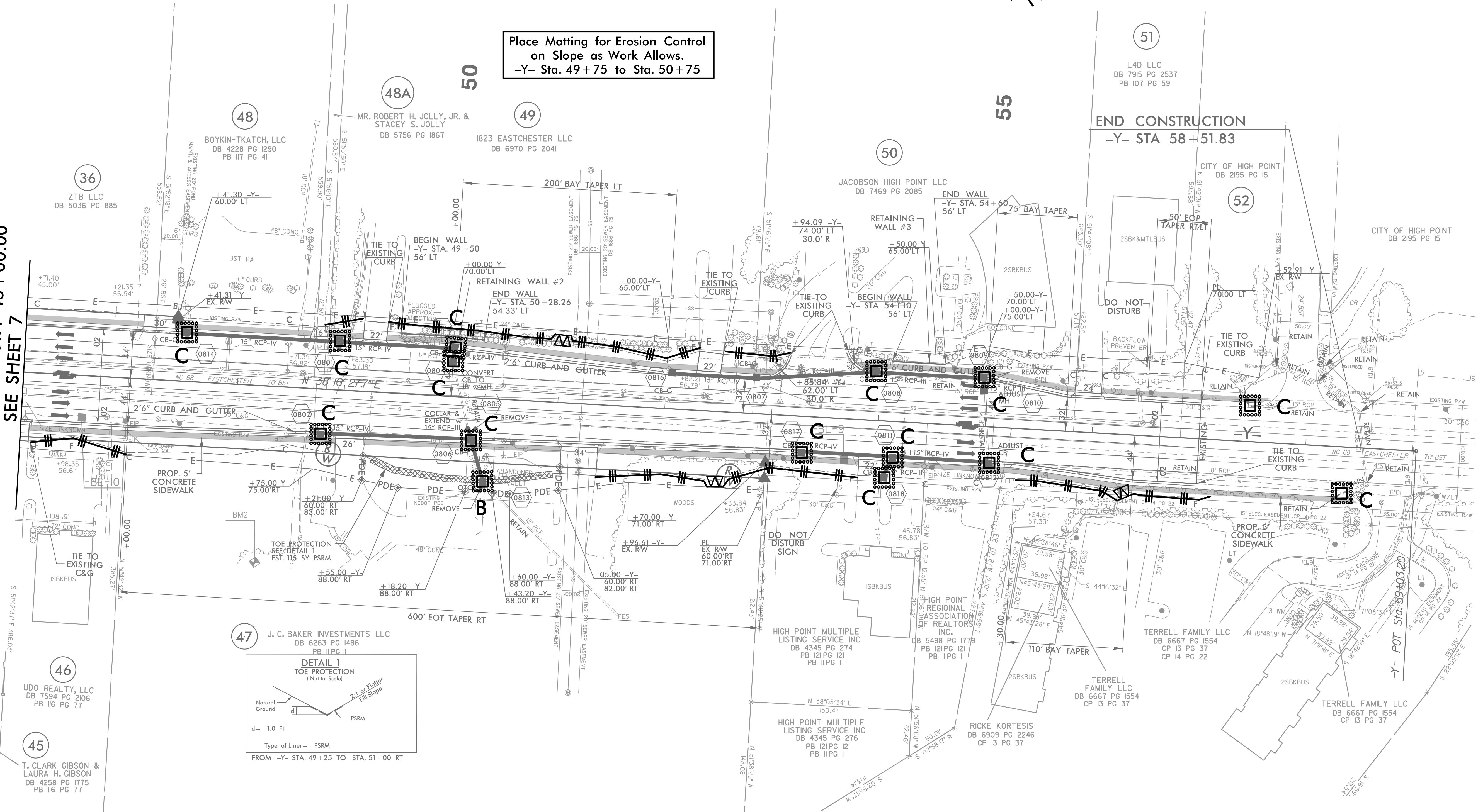
PROJECT REFERENCE NO.	SHEET NO.
U-5169	EC-13/CONST.8
RW SHEET NO.	
ROADWAY DESIGN ENGINEER	HYDRAULICS ENGINEER



UTILIZE FABRIC INSERT INLET PROTECTION DEVICES IN LIEU OF ROCK INLET SEDIMENT TRAPS, TYPE-C AS DIRECTED TO AVOID IMPOUNDMENT OF RUNOFF IN ROADWAY OPEN TO TRAFFIC.

Place Matting for Erosion Control on Slope as Work Allows.
 -Y- Sta. 49+75 to Sta. 50+75

MATCH LINE -Y- STA 46+00.00
 SEE SHEET 7



45 T. CLARK GIBSON & LAURA H. GIBSON
 DB 4258 PG 1775
 PB 116 PG 77

46 UDO REALTY, LLC
 DB 7594 PG 2106
 PB 116 PG 77

47 J. C. BAKER INVESTMENTS LLC
 DB 6263 PG 1486
 PB 116 PG 1

HIGH POINT MULTIPLE LISTING SERVICE INC
 DB 4345 PG 274
 PB 121 PG 121
 PB 116 PG 1

HIGH POINT MULTIPLE LISTING SERVICE INC
 DB 4345 PG 274
 PB 121 PG 121
 PB 116 PG 1

RICKE KORTESIS
 DB 6909 PG 2246
 CP 13 PG 37

TERRELL FAMILY LLC
 DB 6667 PG 1554
 CP 13 PG 37
 CP 14 PG 22

TERRELL FAMILY LLC
 DB 6667 PG 1554
 CP 13 PG 37
 CP 14 PG 22

TERRELL FAMILY LLC
 DB 6667 PG 1554
 CP 13 PG 37

TERRELL FAMILY LLC
 DB 6667 PG 1554
 CP 13 PG 37

8/17/99
 3/5/2018
 HNTB