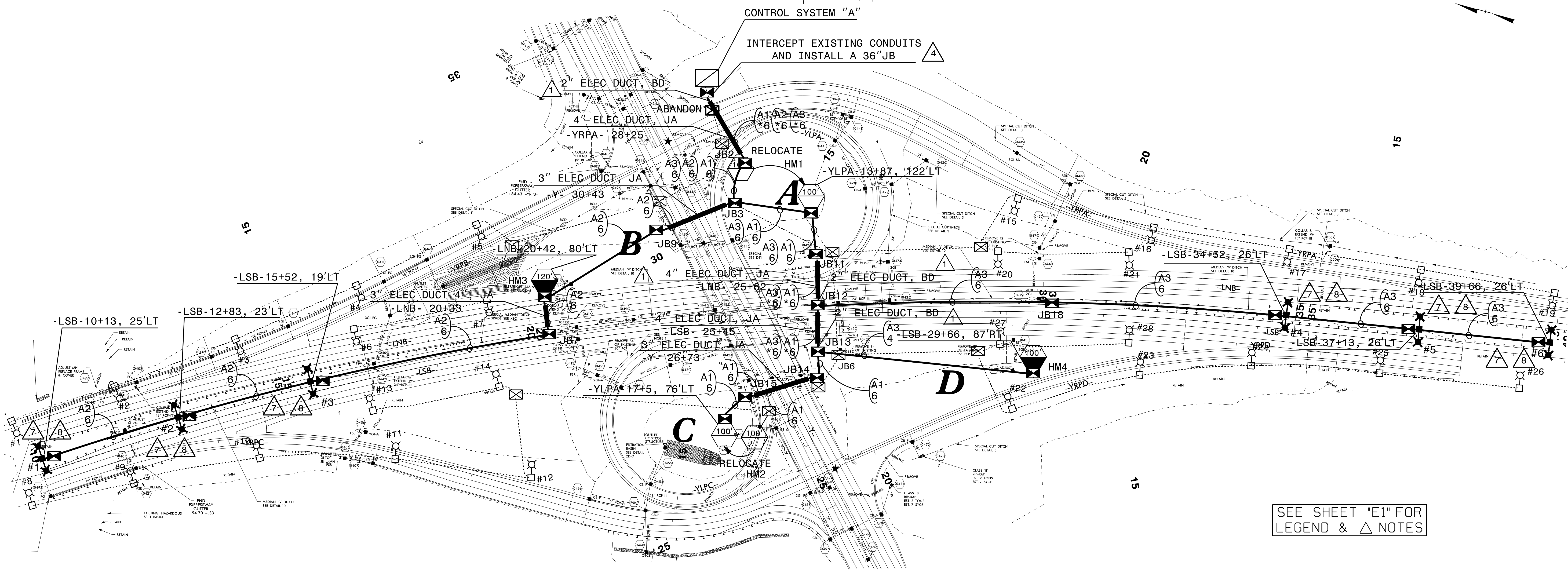


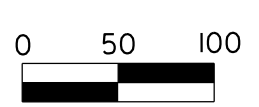
**DOCUMENT NOT CONSIDERED FINAL  
UNLESS ALL SIGNATURES COMPLETED**



SEE SHEET "E1" FOR  
LEGEND & △ NOTES

\*\*LOAD SCHEDULE  
EASTCHESTER DRIVE, SE  
CONTROL SYSTEM "A"

CKT	EXISTING		PROPOSED				AMPS @ 480V	KW LOAD	*BREAKER SIZE
	HIGH MAST 4 @ 475W LED	SINGLE ARM 1 @ 196W LED	100' HIGH MAST 4 @ 475W LED	100' HIGH MAST 6 @ 560W LED	120' HIGH MAST 8 @ 560W LED	TWIN ARM 2 @ 196W LED			
A1	HM1	1, 2, 3, 4, 5, 6, 7	HM1, HM2				8.0	3.8	50A
A2		15, 16, 17, 18, 19, 20, 21			HM3	1, 2, 3	11.8	5.7	50A
A3	HM2	8, 9, 10, 11, 12, 13, 14		HM4		4, 5, 6	9.5	4.5	50A
A4		22, 23, 24, 25, 26, 27, 28							SPARE 50A
TOTAL	2	28	2	1	1	6	29.3	14	4



\* REUSE EXISTING BREAKERS.  
\*\* HPS LIGHTING ORIGINALLY INSTALLED UNDER TIP R-609H,  
LET ON 11/20/2001, AND UPGRADED TO LED IN 2018 BY  
BRADY/TRANE SERVICES UNDER STATEWIDE LED UPGRADE  
PERFORMANCE CONTRACT.

2			
1			
Rev.	Date	Description	Approved
<b>NORTH CAROLINA DEPARTMENT OF TRANSPORTATION</b> ROADWAY DESIGN LIGHTING/ELECTRICAL SECTION <b>LIGHTING LAYOUT</b> LIGHTING RELOCATION AT I-74/US 311 AND NC 68 (EASTCHESTER DRIVE) INTERCHANGE GUILFORD COUNTY			
Drawn By:	SKS	Approved By:	Dwg No.:

23-MAR-2018 13:58  
R:\Lighting Plans\U5169\_rdy\_dsn\_LE.E2.dgn  
sk5018