

8/17/99

PROJECT REFERENCE NO. U-5169	SHEET NO. 5
RW SHEET NO.	
ROADWAY DESIGN ENGINEER	HYDRAULICS ENGINEER
DOCUMENT NOT CONSIDERED FINAL UNLESS ALL SIGNATURES COMPLETED	

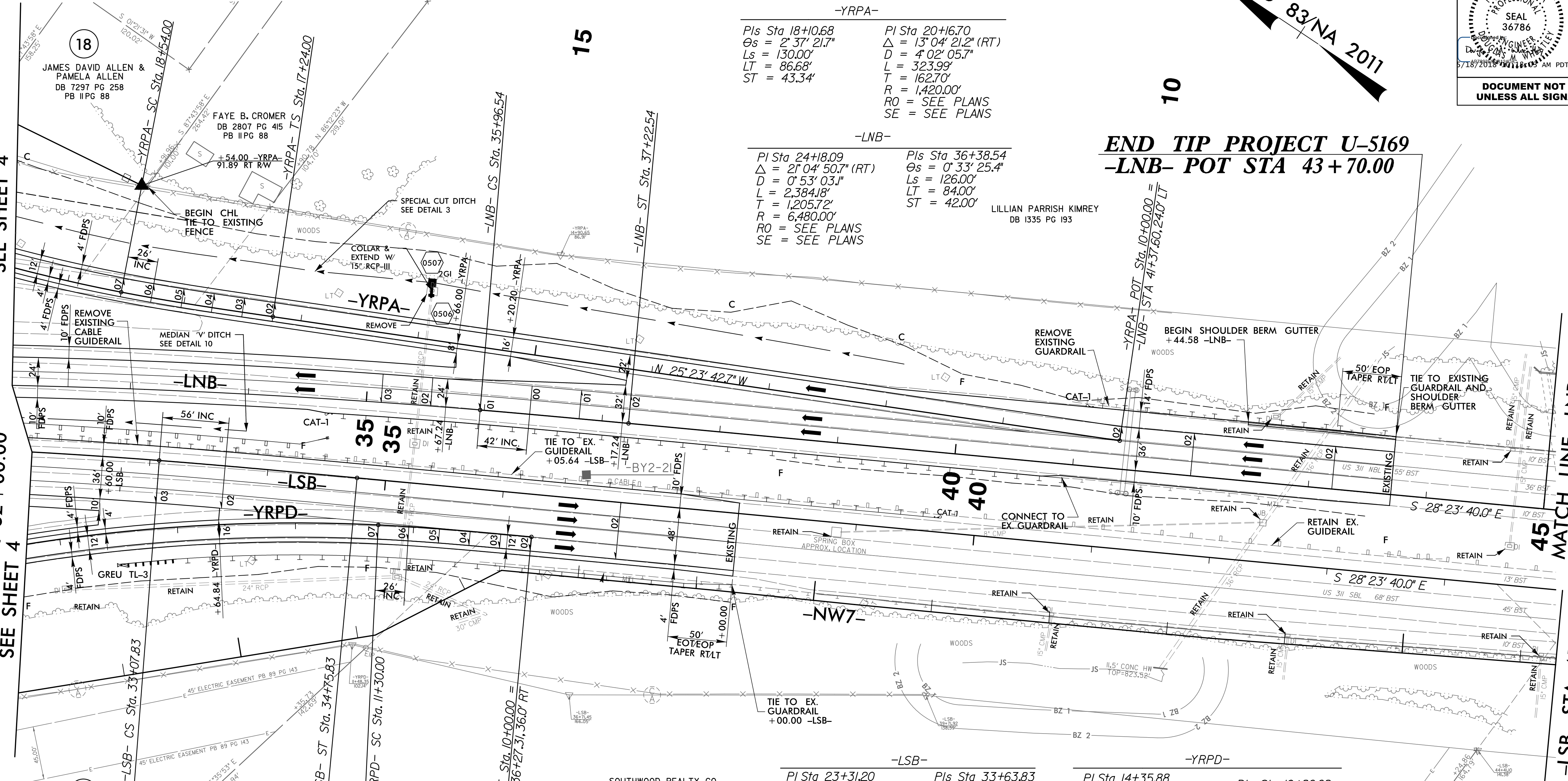
NAD 83/NA 2011

MATCH LINE -LNB- STA 32+00.00
SEE SHEET 4

MATCH LINE -LSB- STA 32+00.00
SEE SHEET 4

MATCH LINE -LNB- STA 45+00.00
SEE SHEET 5A

MATCH LINE -LSB- STA 45+00.00
SEE SHEET 5A



-YRPA-
 Pls Sta 18+10.68
 $\Delta = 2^\circ 37' 21.7''$
 $L = 130.00'$
 $LT = 86.68'$
 $ST = 43.34'$

PI Sta 20+16.70
 $\Delta = 13^\circ 04' 21.2''$ (RT)
 $D = 4^\circ 02' 05.7''$
 $L = 323.99'$
 $T = 162.70'$
 $R = 1,420.00'$
 $RO = \text{SEE PLANS}$
 $SE = \text{SEE PLANS}$

-LNB-
 Pls Sta 24+18.09
 $\Delta = 2^\circ 04' 50.7''$ (RT)
 $D = 0^\circ 53' 03.1''$
 $L = 2,384.18'$
 $T = 1,205.72'$
 $R = 6,480.00'$
 $RO = \text{SEE PLANS}$
 $SE = \text{SEE PLANS}$

Pls Sta 36+38.54
 $\Delta = 0^\circ 33' 25.4''$
 $Ls = 126.00'$
 $LT = 84.00'$
 $ST = 42.00'$

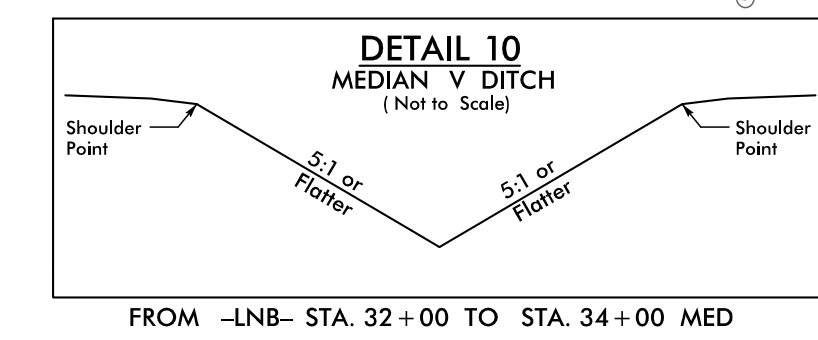
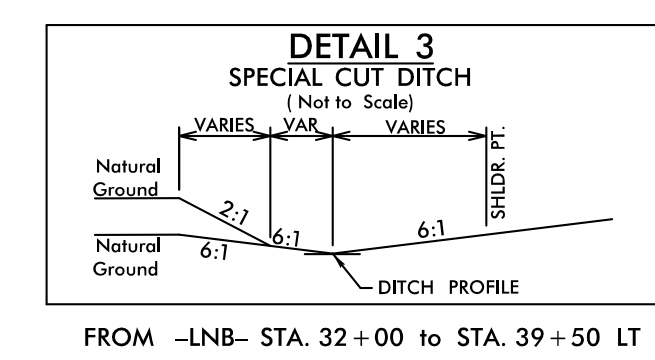
END TIP PROJECT U-5169
-LNB- POT STA 43+70.00

LILLIAN PARRISH KIMREY
DB 1335 PG 193

SOUTHWOOD REALTY CO.
DB 5957 PG 204
PB 74 PG 94

WALTER S. DANIEL &
NANCY L. DANIEL
DB 5091 PG 1589

AMBASSADOR PLACE
HOMEOWNERS ASSOCIATION INC.
DB 4723 PG 862
PB 129 PG 88



FOR -LNB- PROFILE, SEE SHEET 9 & 10
 FOR -LSB- PROFILE, SEE SHEET 11
 FOR -YRPA- PROFILE, SEE SHEET 16
 FOR -YRPD- PROFILE, SEE SHEET 19
 FOR NOISE WALL PLANS, SEE SHEETS 2N-2 & 2N-3

18-MAY-2018 11:25
Roadway (Pro) U5169_rdy_pah5.dgn
HNTB