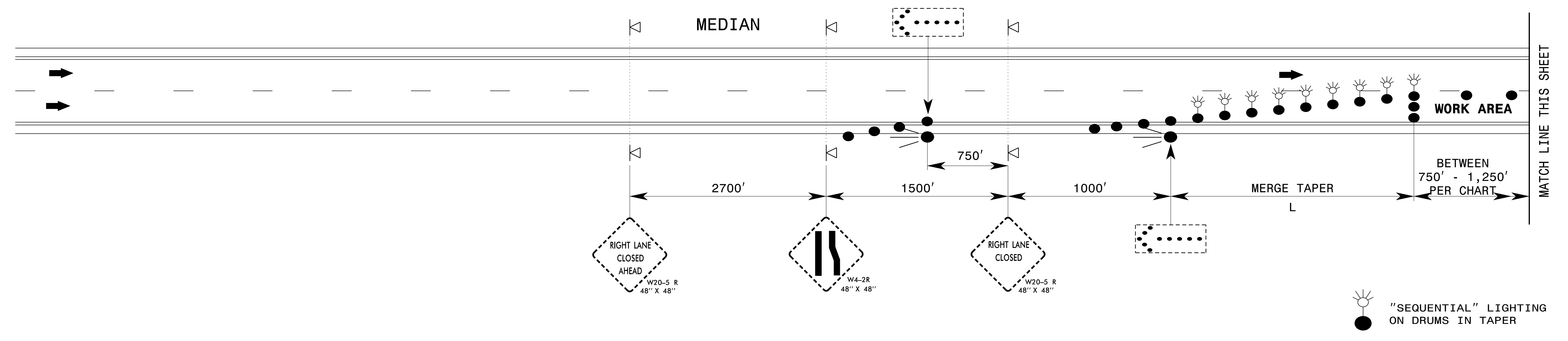
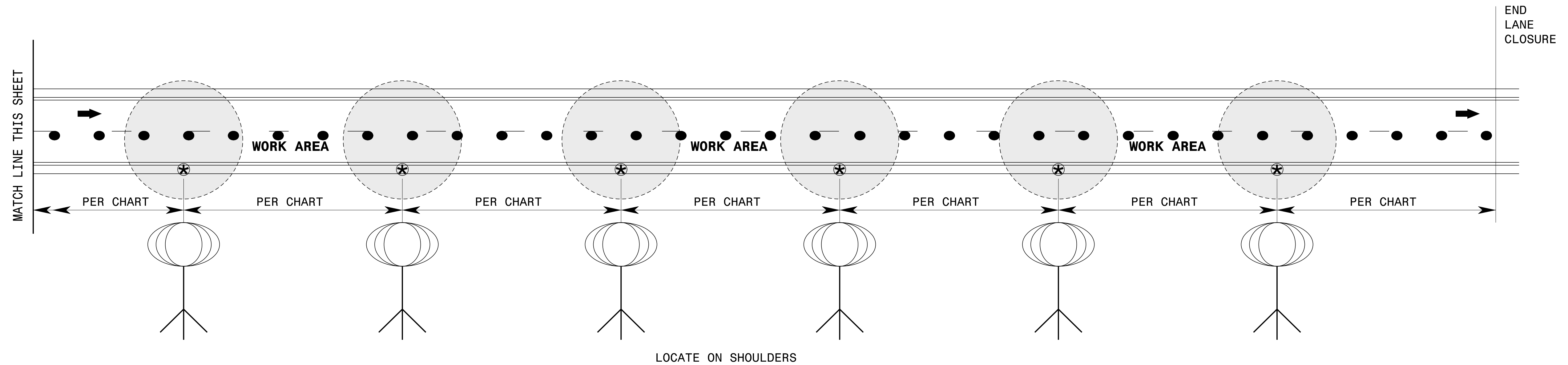


ADVANCE WARNING AREA



WORK ZONE AREA



SPACING CHART

LIGHT OUTPUT (LUMENS)	MINIMUM LIGHTED FIXTURE AREA (SQUARE FEET)	MAXIMUM SPACING (FEET)	LIGHT UNITS (PER MILE)
50,000 TO 65,000	5.5	750'	6
66,000 TO 80,000	5.5	1,000'	5
81,000 TO 100,000	36	1,250'	4

NOTES

- 1) SPACE LIGHT UNITS ACCORDING TO THE CHART.
- 2) EACH LIGHT UNIT SHALL BE CAPABLE OF ELEVATING TO A MINIMUM HEIGHT OF 14' ABOVE THE PAVEMENT.
- 3) PLACE ON PAVED SHOULDER IF POSSIBLE.

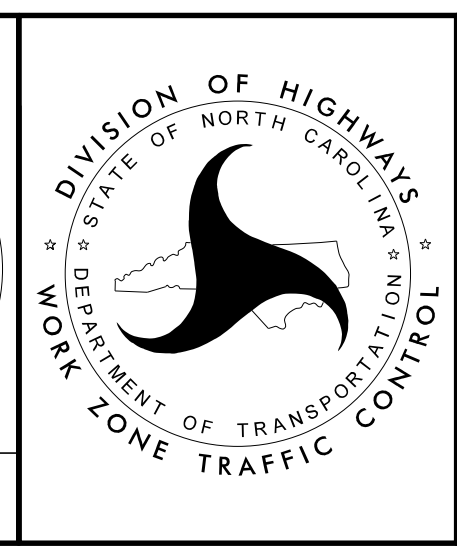
3/17/2017 S:\TMD\WZTC\DesignGroup3\Squad3B\Data\Inter-state Resurfacing Provisions and Details\Detail Drawings\Sequential and Presence Lighting_20170227.dgn User:kedais

APPROVED: *Steve Kite*
 DATE: 3/17/2017

DocuSigned by:
 E27CE30E1DFC442...

SEAL
 022104
 JOHN S. KITE, II
 ENGINEER

DOCUMENT NOT CONSIDERED FINAL
 UNLESS ALL SIGNATURES COMPLETED



SEQUENTIAL FLASHING
 WARNING LIGHTS
 AND
 WORK ZONE
 PRESENCE LIGHTING