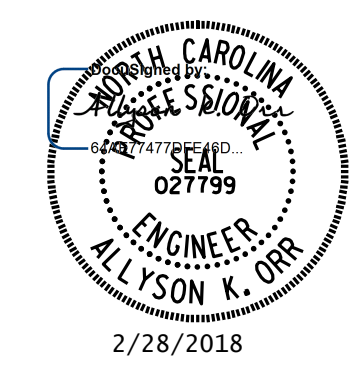


STRUCTURE INDEX			
STR.	STATION	DESCRIPTION	SHEETS
1	23+26.00 -L-	BRIDGE ON US 29 / 70 / I-85 BUISNESS OVER DEEP RIVER (WBL)	S1-1 THRU S1-35
2	23+26.00 -L-	BRIDGE ON US 29 / 70 / I-85 BUISNESS OVER DEEP RIVER (EBL)	S2-1 THRU S2-35

PROJECT NO. B-5351  
GUILFORD COUNTY  
 STATION: \_\_\_\_\_



STATE OF NORTH CAROLINA  
 DEPARTMENT OF TRANSPORTATION  
 RALEIGH  
 INDEX

**DOCUMENT NOT CONSIDERED FINAL  
 UNLESS ALL SIGNATURES COMPLETED**

MI ENGINEERING  
 1011 SCHAUB DRIVE, SUITE 100  
 RALEIGH, NC 27606  
 (919) 851-6606  
 FIRM PE NUMBER : P-0671

REVISIONS						SHEET NO.
NO.	BY:	DATE:	NO.	BY:	DATE:	TOTAL SHEETS
1			3			
2			4			

DRAWN BY : B.E. LANNING DATE : 02/18  
 CHECKED BY : A.K. ORR DATE : 02/18  
 DESIGN ENGINEER OF RECORD : A.K. ORR DATE : 02/18

2/8/2018 1:39:53 PM blanning  
 File name: P:\NC\_Bridges\MI600135 - B-5351 Guilford Co\B-5351\Structures\499\_003\_B5351\_SMLL\_INDEX.dgn