

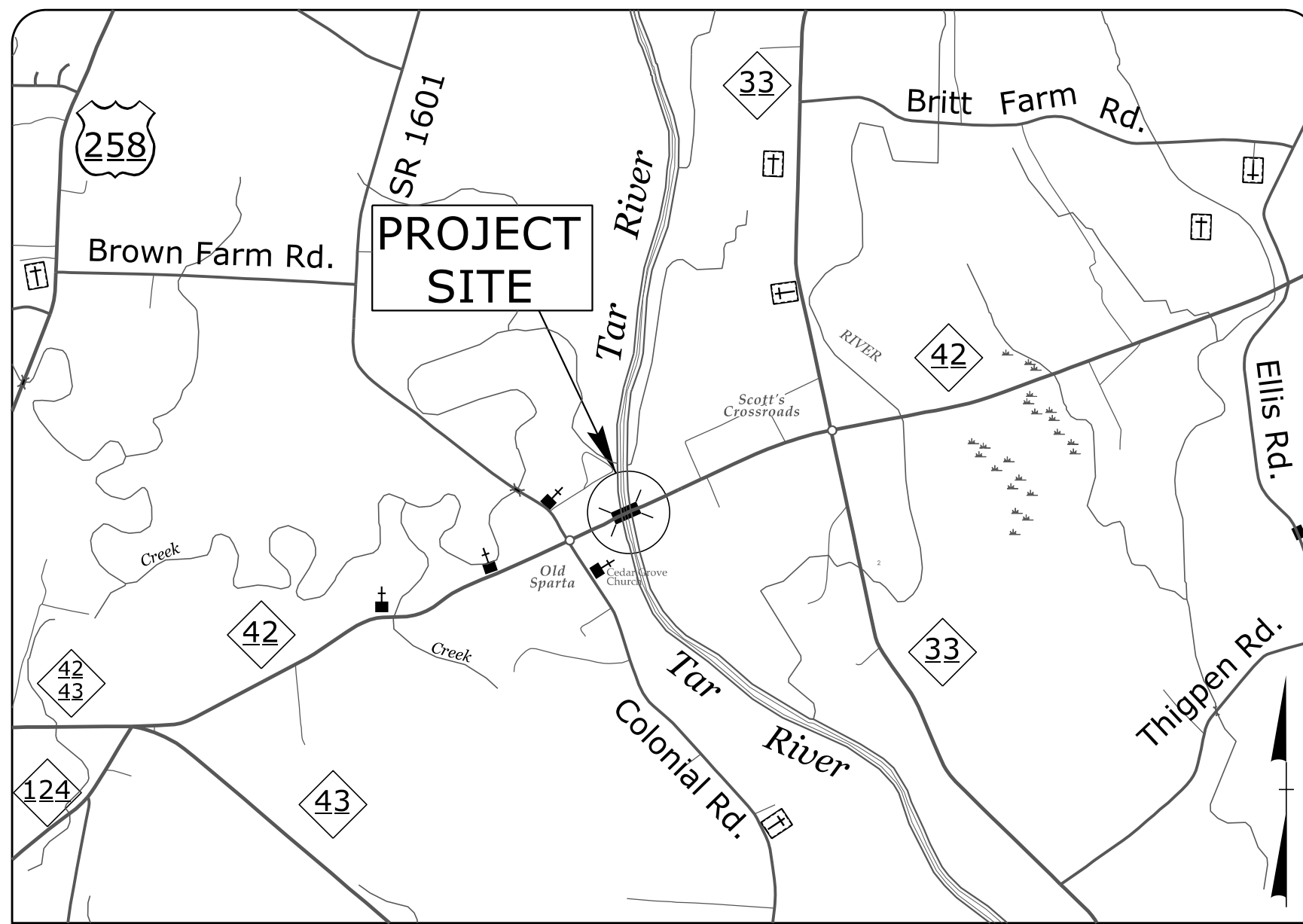
**This electronic collection of documents is provided
for the convenience of the user
and is Not a Certified Document –**

**The documents contained herein were originally issued
and sealed by the individuals whose names and license
numbers appear on each page, on the dates appearing
with their signature on that page.**

**This file or an individual page
shall not be considered a certified document.**

09/08/99

TIP PROJECT: B-4932



VICINITY MAP
NOT TO SCALE

STATE OF NORTH CAROLINA
DIVISION OF HIGHWAYS

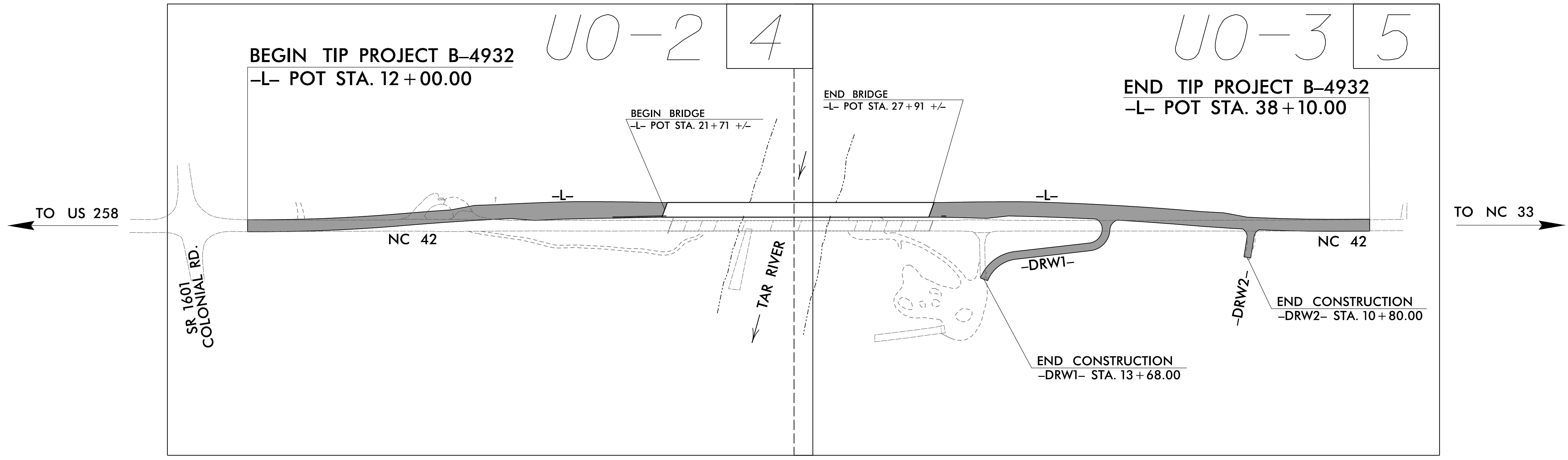
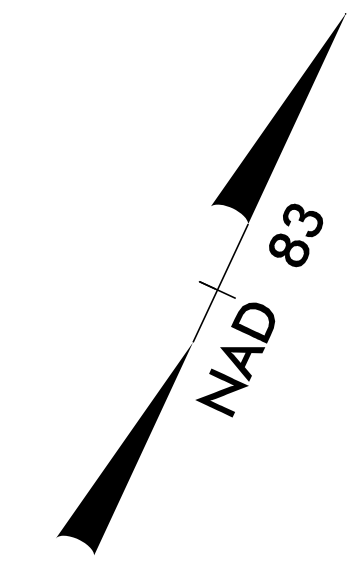
UTILITIES BY OTHERS PLANS
EDGECOMBE COUNTY

LOCATION: BRIDGE NO. 28 OVER TAR RIVER ON NC 42

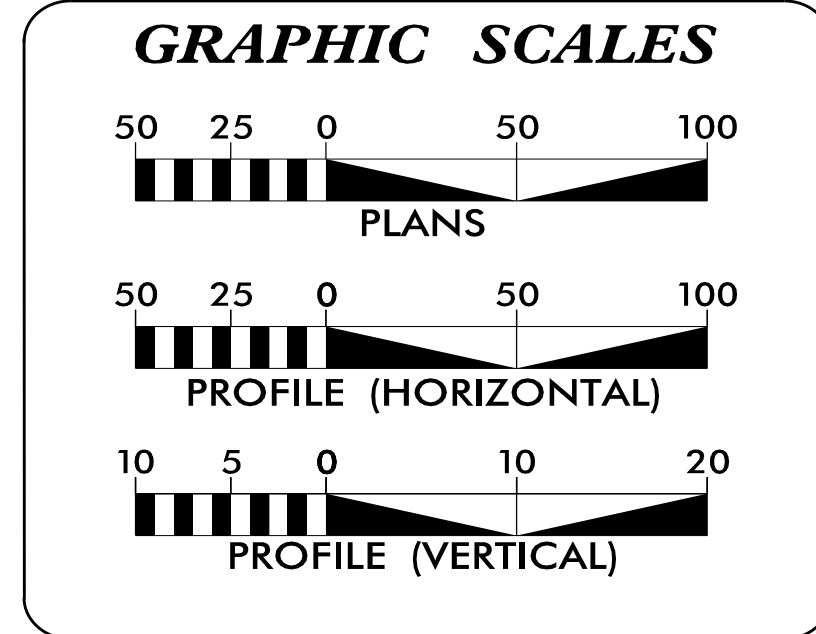
TYPE OF WORK: WATER, TELEPHONE, POWER, AND
CATV RELOCATION

T.I.P. NO.	SHEET NO.
B-4932	UO-1

NOTE:
ALL UTILITY WORK SHOWN ON THIS SHEET IS DONE BY OTHERS.
NO PAYMENT WILL BE MADE TO THE CONTRACTOR FOR UTILITY WORK SHOWN ON THIS SHEET.



CLEARING ON THIS PROJECT SHALL BE PERFORMED TO THE LIMITS ESTABLISHED BY METHOD III.



SHEET NO.:	DESCRIPTION:
UO-1	TITLE SHEET
UO-2 THRU UO-3	UBO PLAN SHEETS

UTILITY OWNERS WITH CONFLICTS
(A) WATER - EDGECOMBE COUNTY
(B) POWER - EDGECOMBE MARTIN EMC
(C) TELEPHONE - CENTURYLINK
(D) CATV - SUDDENLINK

PREPARED IN THE OFFICE OF:

1223 Jones Franklin Rd.
Raleigh, N.C. 27606
License No. F-0377
Bus: 919 851 8077
Fax: 919 851 8107

TRANSPORTATION PLANNING/DESIGN - BRIDGE/STRUCTURE DESIGN
CIVIL/SITE DESIGN - GIS/GPS - CONSTRUCTION OBSERVATION

John D. Schriener, PLS PROJECT UTILITY COORDINATOR

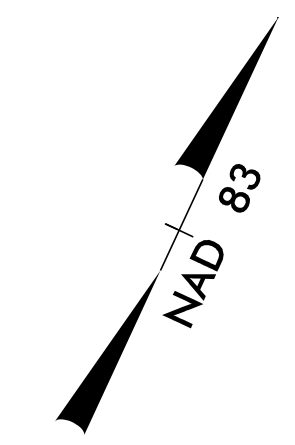
DIVISION OF HIGHWAYS
UTILITIES UNIT
1555 MAIL SERVICES CENTER
RALEIGH NC 27699-1555
PHONE (919) 707-6690
FAX (919) 250-4151

Bo Hemphill, PE UTILITIES REGIONAL ENGINEER
Kelvin Martin UTILITIES ENGINEER
Kyle Pleasant UTILITIES AREA COORDINATOR
Larry James UTILITIES COORDINATOR

\$\$\$\$\$ SYSTEMS \$\$\$
\$\$\$\$\$ DGN \$\$\$
\$\$\$\$\$ USERNAME \$\$\$

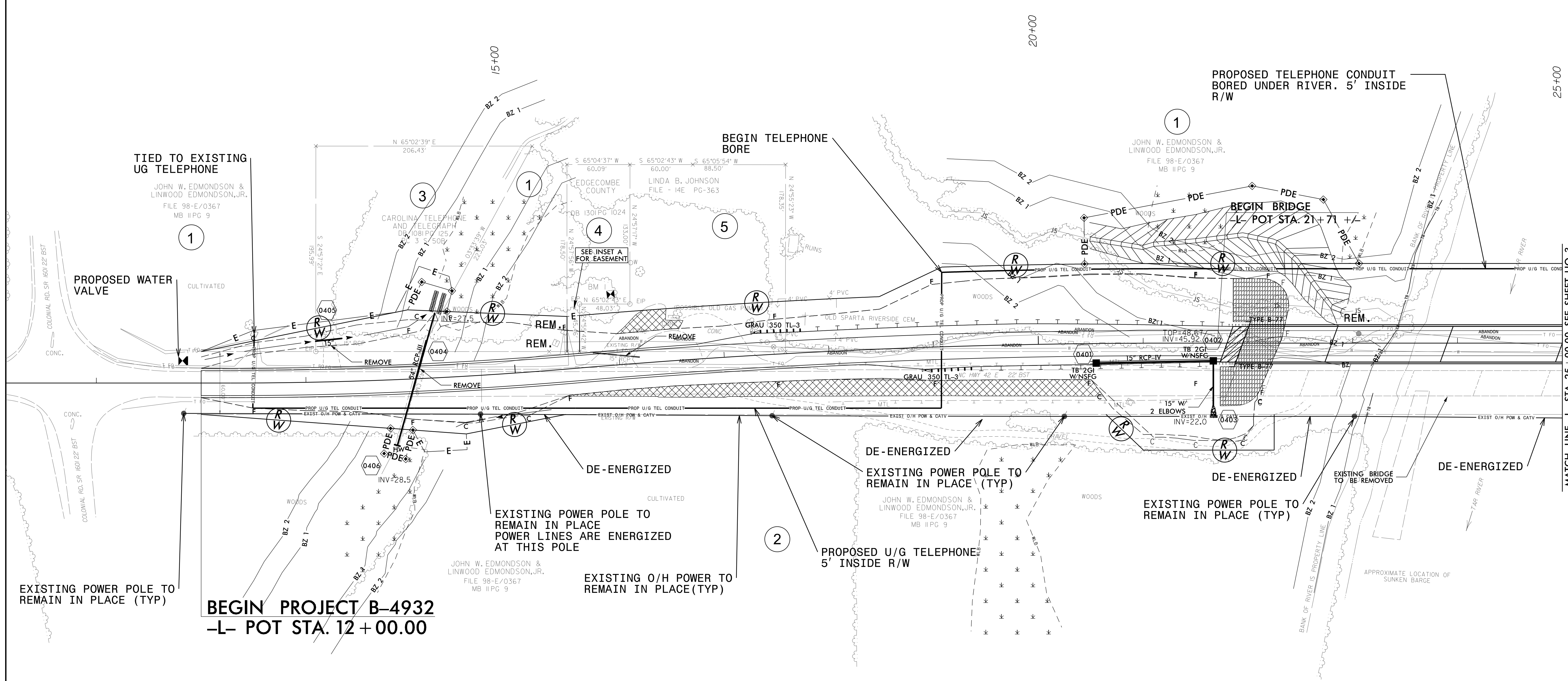
UTILITIES BY OTHERS

NOTE:
 ALL UTILITY WORK SHOWN ON THIS SHEET WILL BE DONE BY OTHERS. NO PAYMENT WILL BE MADE TO THE CONTRACTOR FOR UTILITY WORK SHOWN ON THIS SHEET.



5/14/99

REVISIONS



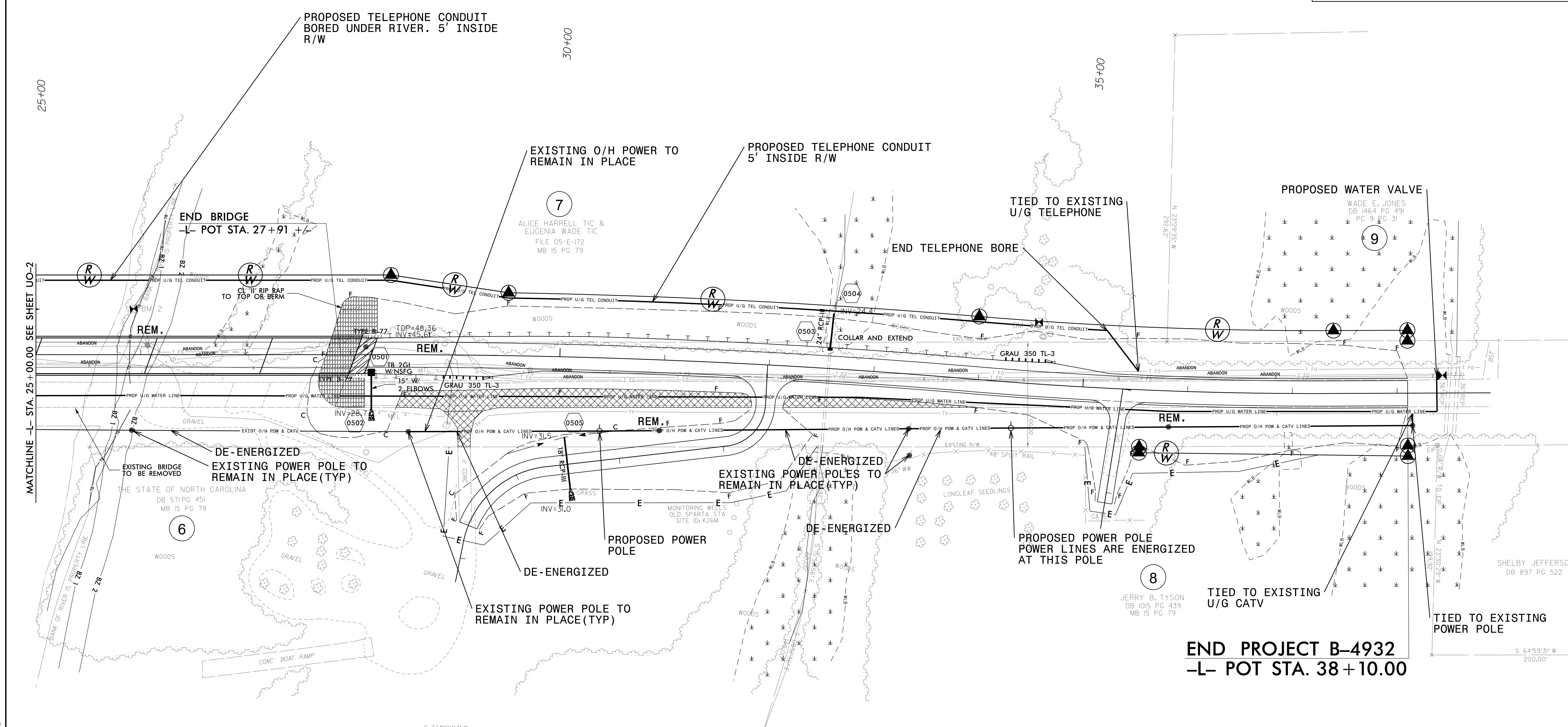
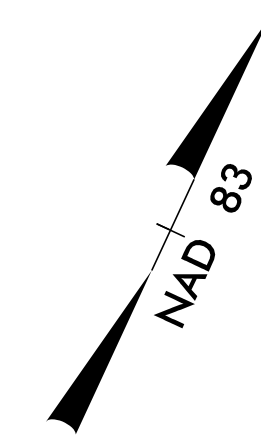
- NOTES:
- 1) THE EXISTING OVERHEAD POWER WILL BE DE-ENERGIZED AND GROUNDED FROM APPROXIMATELY STA 14+50 TO APPROXIMATELY STA 34+34 UNTIL THE PROJECT IS COMPLETE.
 - 2) NEW WATER VALVES WILL BE INSTALLED OUTSIDE THE PROJECT LIMITS TO ISOLATE AND ABANDON THE EXISTING WATER MAIN. THE NEW WATER MAIN WILL BE INSTALLED AFTER PROJECT IS COMPLETE.

3:27:49 PM J:\BO\Proj\B4932.ut_rdy4_U02.psh.dgn
 3/27/99

MATCH LINE -L- STA. 25+00.00 SEE SHEET U0-3

UTILITIES BY OTHERS

NOTE:
 ALL UTILITY WORK SHOWN ON THIS SHEET WILL BE DONE BY OTHERS. NO PAYMENT WILL BE MADE TO THE CONTRACTOR FOR UTILITY WORK SHOWN ON THIS SHEET.



- NOTES:**
- 1) THE EXISTING OVERHEAD POWER WILL BE DE-ENERGIZED AND GROUNDED FROM APPROXIMATELY STA 14+50 TO APPROXIMATELY STA 34+34 UNTIL THE PROJECT IS COMPLETE.
 - 2) NEW WATER VALVES WILL BE INSTALLED OUTSIDE THE PROJECT LIMITS TO ISOLATE AND ABANDON THE EXISTING WATER MAIN. THE NEW WATER MAIN WILL BE INSTALLED AFTER PROJECT IS COMPLETE.

REVISIONS

5/14/99

3:26:42 PM J:\BO\Proj\B4932\ut_rdy\5_U03.psh.dgn

SHELBY JEFFERSON DB 897 PG 522

S 64°59'31" W 200.00'