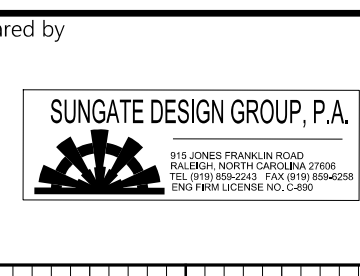


5/28/99

DOCUMENT NOT CONSIDERED FINAL  
UNLESS ALL SIGNATURES COMPLETED



PROJECT REFERENCE NO. B-4932	SHEET NO. 6
ROADWAY DESIGN ENGINEER	HYDRAULICS ENGINEER
SEAL 014493 SUNGATE DESIGN GROUP, P.A.	SEAL 26971 SUNGATE DESIGN GROUP, P.A.
1/23/2018	

BM#1  
RR SPIKE IN BASE OF 36" OAK  
ELEV.=41.93'  
-L- STA.15+96, 67' LT

-L-

**BRIDGE HYDRAULIC DATA**

DESIGN DISCHARGE	= 42,400	CFS
DESIGN FREQUENCY	= 50	YRS
DESIGN HW ELEVATION	= 38.6	FT
BASE DISCHARGE	= 49,600	CFS
BASE FREQUENCY	= 100	YRS
BASE HW ELEVATION	= 40.18	FT
OVERTOPPING DISCHARGE	= 67,000	CFS
OVERTOPPING FREQUENCY	= <500	YRS
OVERTOPPING ELEVATION	= 40.5	FT
DATE OF SURVEY	= 11-24-15	
W.S.ELEVATION AT DATE OF SURVEY	= 15.4	FT

BEGIN BRIDGE  
-L- STA. 21+95.00

**PIPE HYDRAULIC DATA**  
54" RCP Sta.14+06 -L-

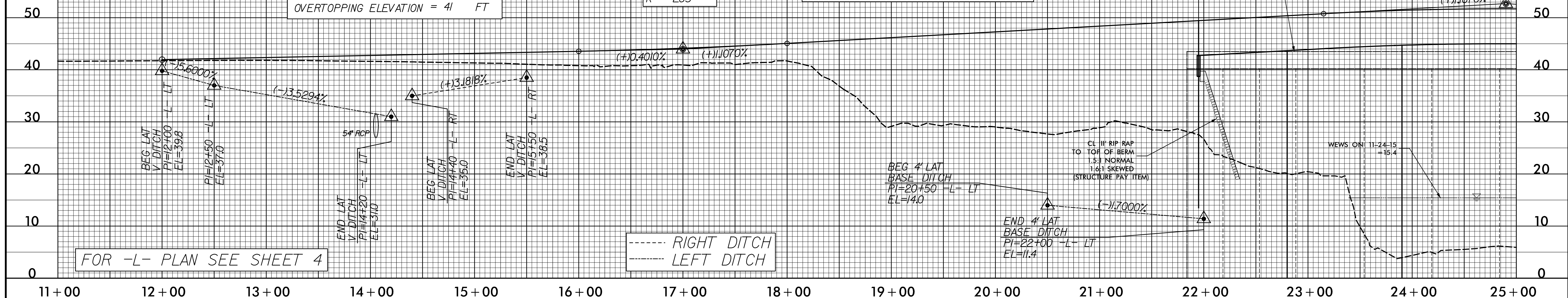
DRAINAGE AREA	= 150	AC
DESIGN FREQUENCY	= 50	YRS
DESIGN DISCHARGE	= 70	CFS
DESIGN HW ELEVATION	= 32.2	FT
100 YEAR DISCHARGE	= 85	CFS
100 YEAR HW ELEVATION	= 32.6	FT
OVERTOPPING FREQUENCY	= +500	YRS
OVERTOPPING DISCHARGE	= +120	CFS
OVERTOPPING ELEVATION	= 41	FT

BEGIN GRADE  
-L- STA. 12+00.00  
EL.=41.95'

PI = 17+00.00  
EL = 43.95'  
VC = 200'  
K = 283

CL STA.25+00 -L-  
1@85', 4@110', 1@85'  
SKEW = 110 DEG

PI = 24+90.00  
EL = 52.70'  
VC = 350'  
K = 153



FOR -L- PLAN SEE SHEET 4

----- RIGHT DITCH  
----- LEFT DITCH

BM#2  
RR SPIKE IN BASE OF 14" GUM  
ELEV.=22.03'  
-L- STA.25+93, 43' LT

-L-

**PIPE HYDRAULIC DATA**  
EX 24" RCP Sta.32+57 -L-

DRAINAGE AREA	= 71	AC
DESIGN FREQUENCY	= 50	YRS
DESIGN DISCHARGE	= 6	CFS
DESIGN HW ELEVATION	= 26.4	FT
100 YEAR DISCHARGE	= 7.3	CFS
100 YEAR HW ELEVATION	= 26.6	FT
OVERTOPPING FREQUENCY	= +500	YRS
OVERTOPPING DISCHARGE	= +11	CFS
OVERTOPPING ELEVATION	= 40.3	FT

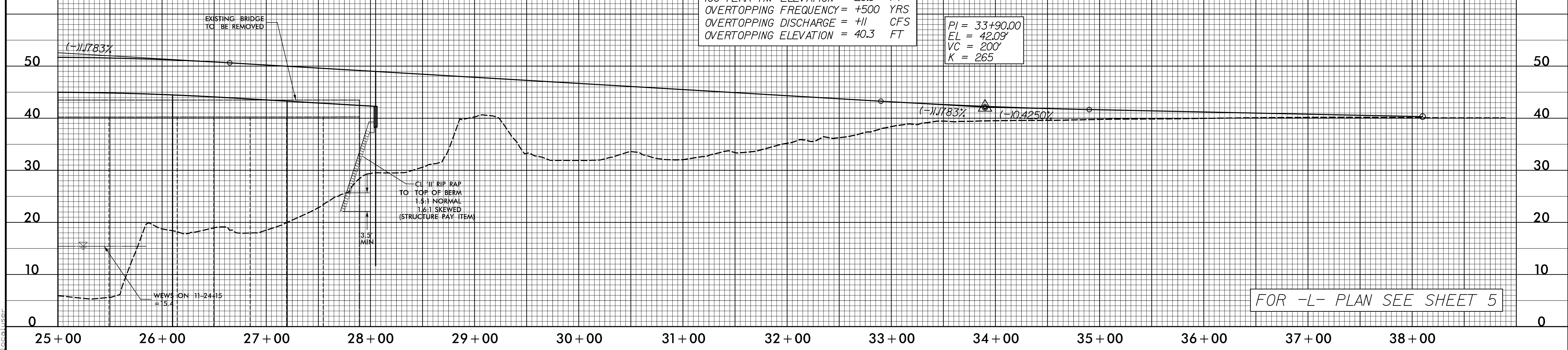
BM#3  
RR SPIKE IN BASE OF 12" PINE  
ELEV.=34.27'  
-L- STA.34+54, 59' LT

PI = 33+90.00  
EL = 42.09'  
VC = 200'  
K = 265

CL STA.25+00 -L-  
1@85', 4@110', 1@85'  
SKEW = 110 DEG

END BRIDGE  
-L- STA. 28+05.00

END GRADE  
-L- STA. 38+10.00  
EL = 40.31'



FOR -L- PLAN SEE SHEET 5

I:\7\2017\4\14\05\04\Proj\B4932\_rdy\_p\1106.dgn