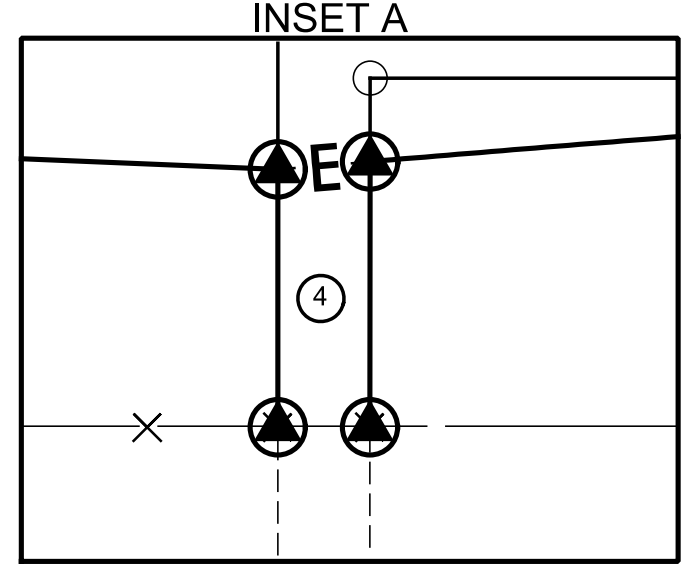
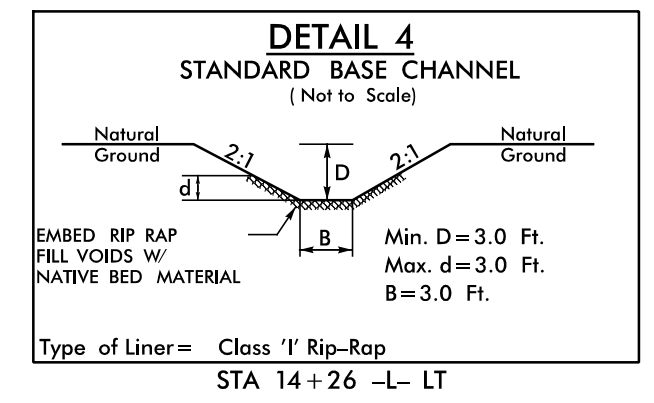
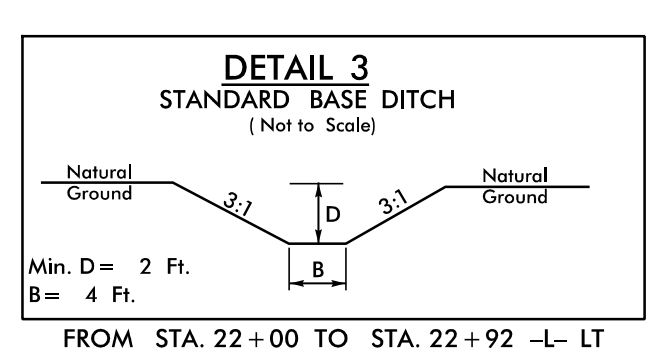
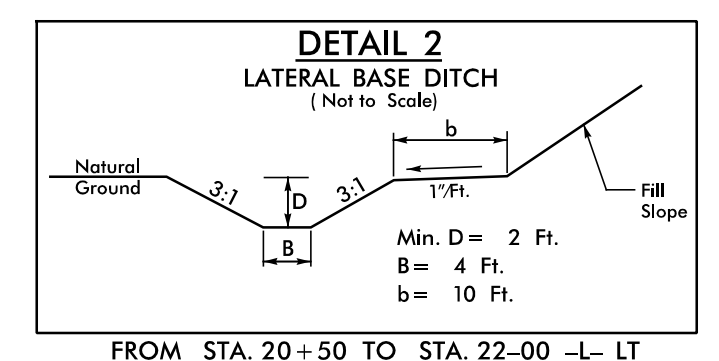
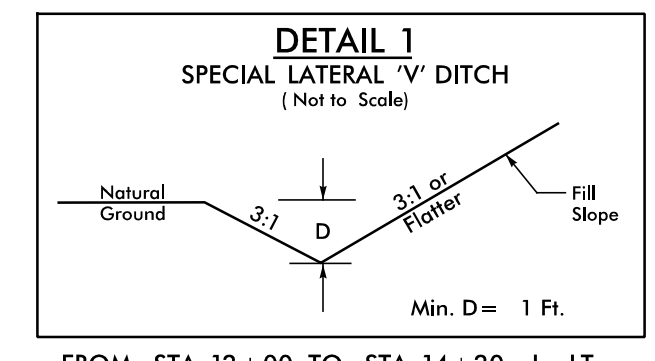


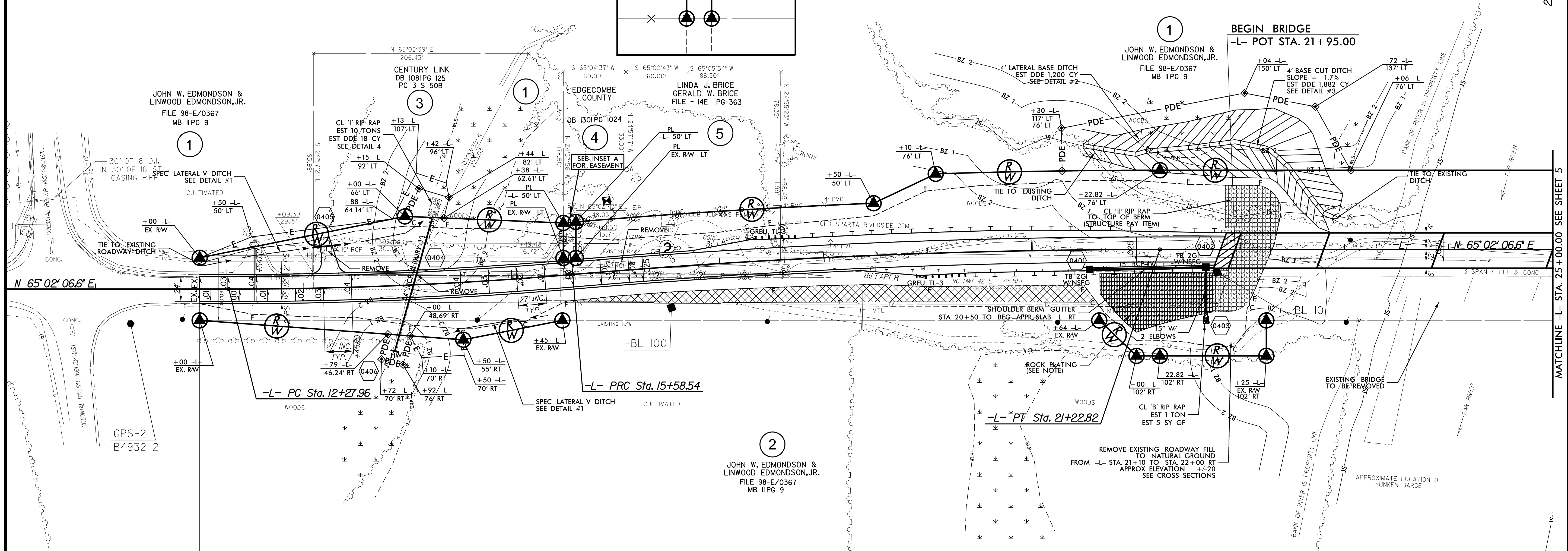
**-L- CURVE DATA**

PI Sta 13+93.35 Δ = 4° 52' 08.6" (LT) D = 1' 28" 22.4" L = 330.58' T = 165.39' R = 3,890.00' SE = .04 RO = 107'	PI Sta 18+40.85 Δ = 4° 52' 08.6" (RT) D = 0' 51" 46.4" L = 564.28' T = 282.31' R = 6,640.00' SE = .025 RO = 67'
--	--

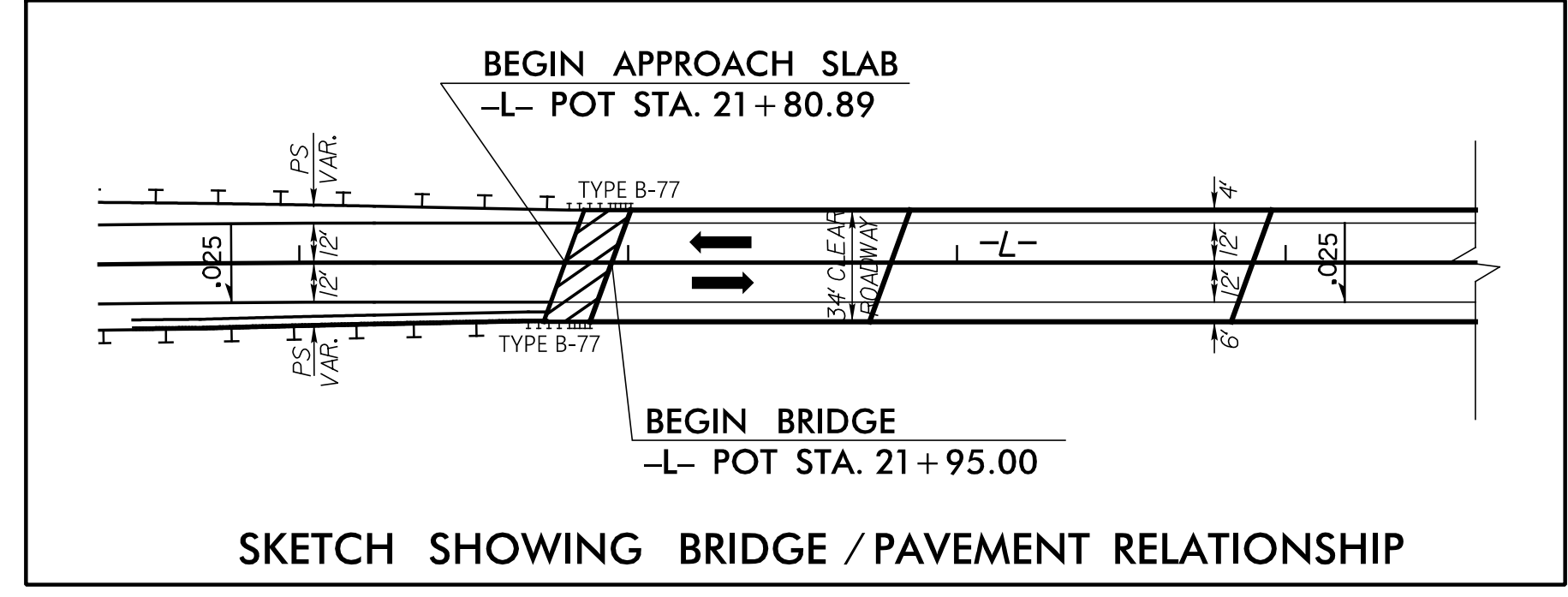


NAD 83/NSRS 2007

DOCUMENT NOT CONSIDERED FINAL  
UNLESS ALL SIGNATURES COMPLETED



**BEGIN PROJECT B-4932**  
-L- POT STA. 12+00.00



**NOTES:**

- USE REINFORCED SOIL SLOPES (RSS) AT -L- STA. 18+25+/- (2.5:1 SLOPE) TO 21+95+/- (1.5:1 SLOPE) LT 1,850 SY OF RSS, 1,850 SY OF COIR FIBER MAT (SEE SHEETS 2G-1 THRU 2G-4)
- USE ROCK PLATING DETAIL NO. 2 AT -L- STA. 20+65+/- TO -L- STA. 21+73+/- RIGHT. EXTEND ROCK PLATING LIMITS TO 2.75:1 (H:V) SLOPES. 600 SY, (SEE STANDARD ROCK PLATING DETAIL)

NOTE: TEMPORARY SIGNAL WILL BE USED FOR ONSITE DETOUR  
FOR -L- PROFILE SEE SHEET 6  
FOR STRUCTURE PLANS SEE SHEET S-1 THRU S-46

REVISIONS

B-17/99

12/26/2017  
R:\Roadway\Proj\B4932\_r.dwg\_psh04.dgn