

-L-
 PI Sta 13+43.76
 $\Delta = 6'52''00.8''$ (LT)
 $D = 1'00''00.0''$
 $L = 686.70'$
 $T = 343.76'$
 $R = 5,729.65'$
 Runoff = 175'
 Se = 3.5%

-YIRPB-
 PI Sta 11+60.82
 $\Delta = 7'55''50.8''$ (LT)
 $D = 2'28''10.7''$
 $L = 321.13'$
 $T = 160.82'$
 $R = 2,320.00'$
 Runoff = 180'
 Se = 6%

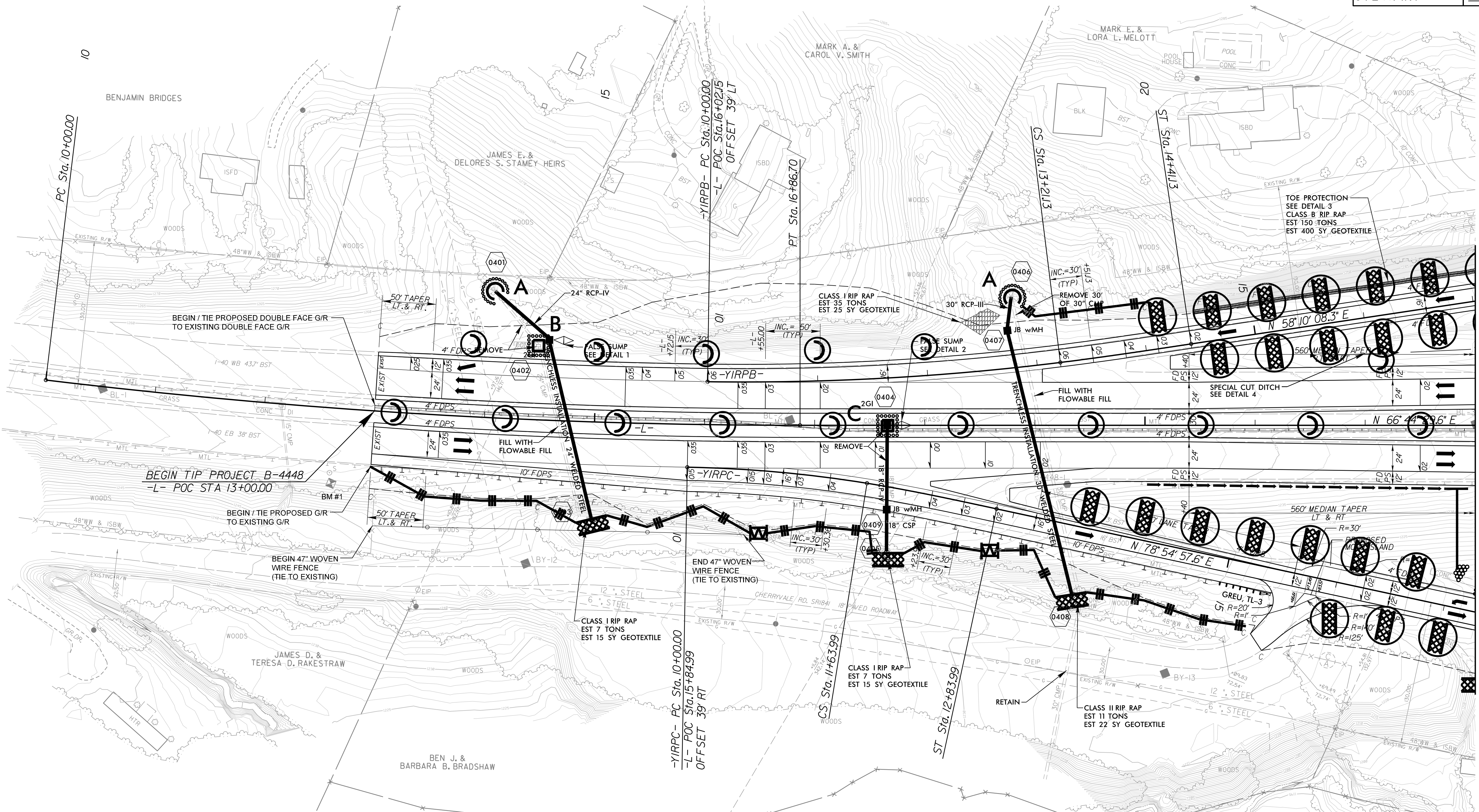
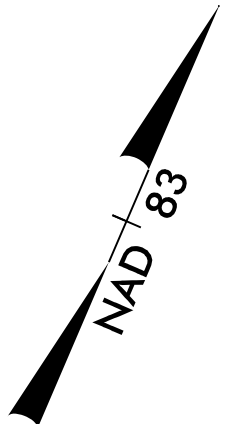
-YIRPB-
 PIs Sta 13+61.13
 $\Delta_s = 1'28''54.4''$
 $L_s = 120.00'$
 $LT = 80.00'$
 $ST = 40.00'$

-YIRPC-
 PI Sta 10+82.13
 $\Delta = 8'10''12.8''$ (RT)
 $D = 4'58''56.1''$
 $L = 163.99'$
 $T = 82.13'$
 $R = 1,500.00'$
 Runoff = 120'
 Se = 4%
 $V_D = 30$ MPH

-YIRPC-
 PIs Sta 12+04.00
 $\Delta_s = 2'59''21.6''$
 $L_s = 120.00'$
 $LT = 80.00'$
 $ST = 40.00'$

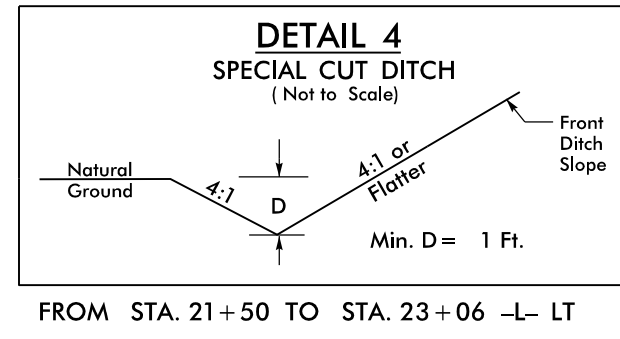
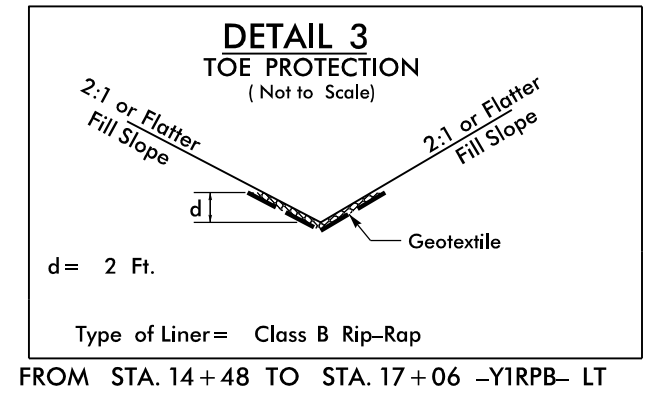
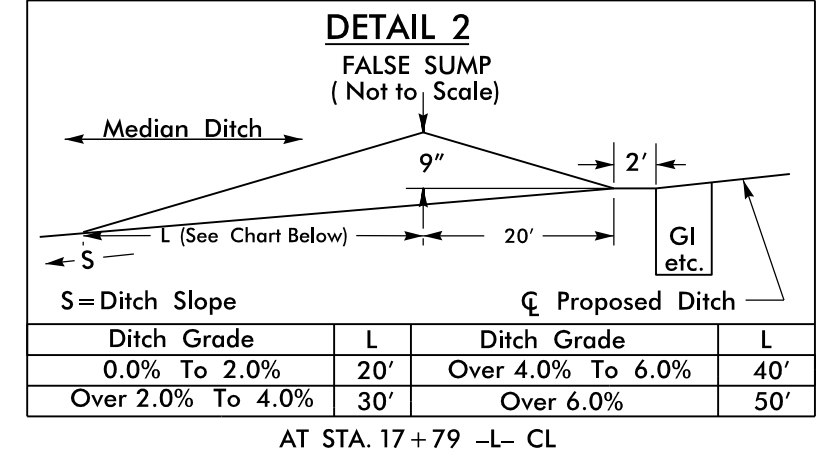
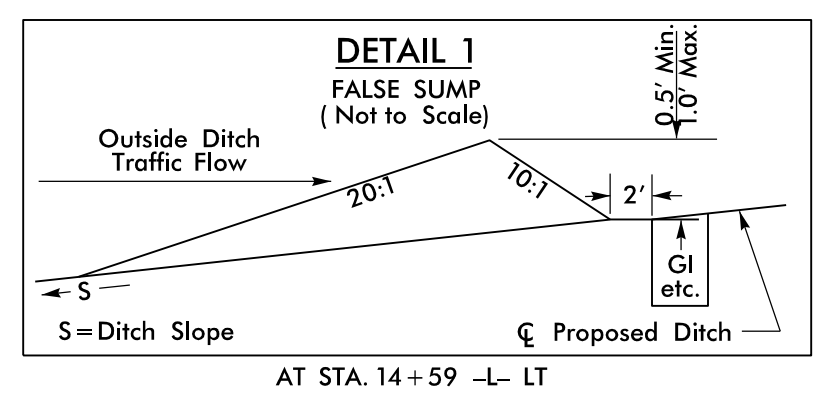
CLEARING AND GRUBBING
 EROSION CONTROL FOR
 CONSTRUCTION SHEET 4

NOTE:
 PLACE TEMPORARY ROCK SEDIMENT DAMS TYPE - B
 AND TEMPORARY ROCK SILT CHECKS TYPE - A AT
 DRAINAGE OUTLETS.



REVISIONS

MATCHLINE
 -L- STA. 23+00.00
 SEE SHEET 5



FOR DETOUR CONSTRUCTION, SEE SHEETS 2B-1 THRU 2B-3

FOR -L- PROFILE (-WBL-), SEE SHEET 7

FOR -L- PROFILE (-EBL-), SEE SHEET 9

FOR -YIRPB- PROFILE, SEE SHEET 12

FOR -YIRPC- PROFILE, SEE SHEET 13

THE ALIGNMENTS FOR VERTICAL PROFILES -WBL- & -EBL-
 ARE BASED ON OFFSETTING THE HORIZONTAL ALIGNMENT -L-
 15 FEET LEFT AND RIGHT.

3/6/2018
 B4448_REU.CO.PSH04.dgn
 5/14/99