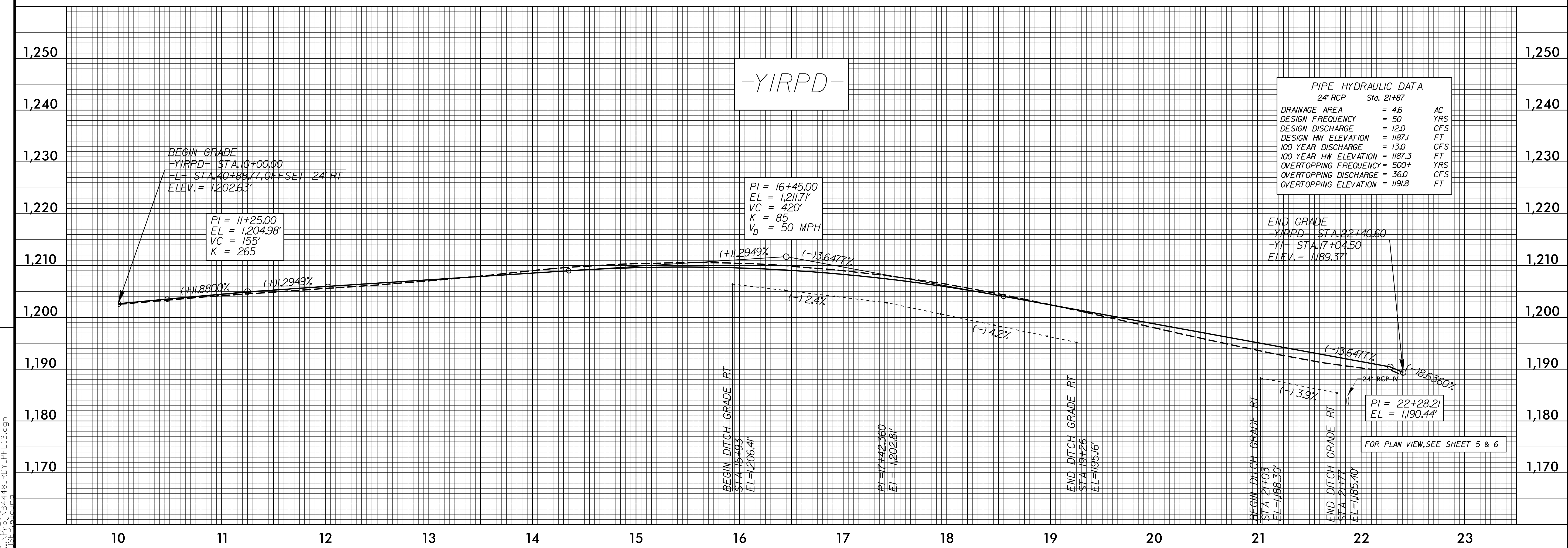
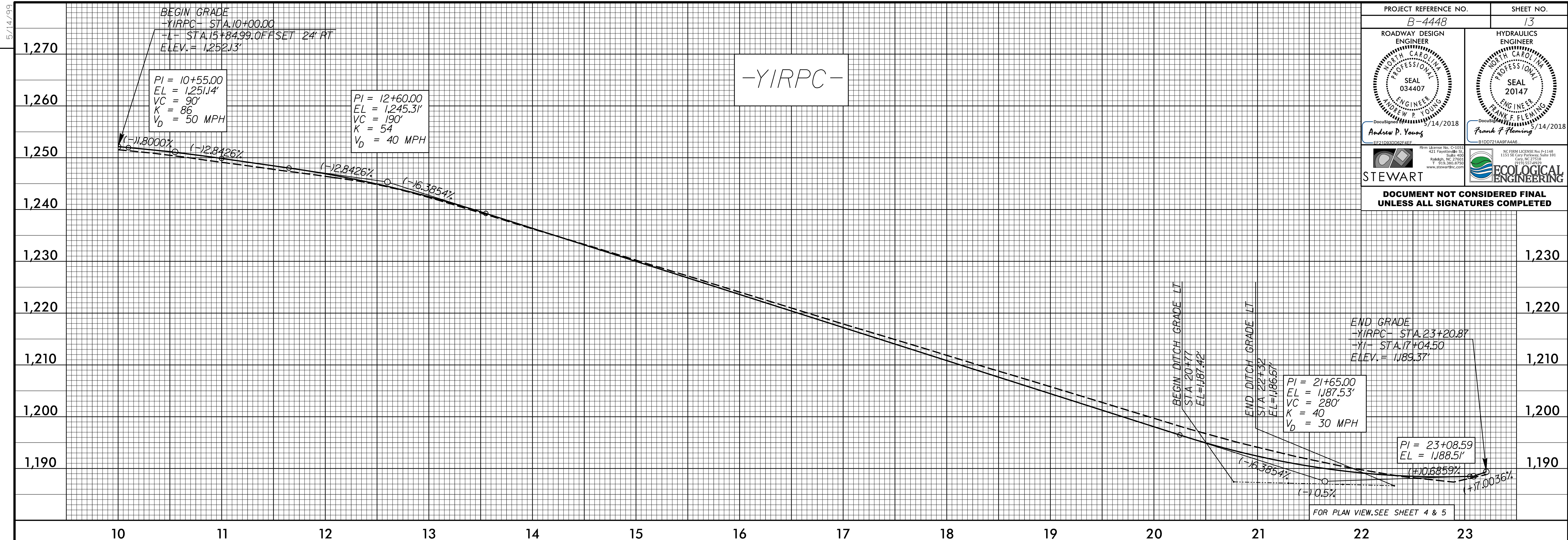


PROJECT REFERENCE NO. B-4448	SHEET NO. 13
ROADWAY DESIGN ENGINEER ANDREW P. YOUNG PROFESSIONAL SEAL 034407 NORTH CAROLINA ENGINEER ANDREW P. YOUNG 5/14/2018	HYDRAULICS ENGINEER FRANK F. FLEMING PROFESSIONAL SEAL 20147 NORTH CAROLINA ENGINEER FRANK F. FLEMING 5/14/2018
STEWART	ECOLOGICAL ENGINEERING
DOCUMENT NOT CONSIDERED FINAL UNLESS ALL SIGNATURES COMPLETED	



PIPE HYDRAULIC DATA
24" RCP Sta. 21+87

DRAINAGE AREA	= 4.6	AC
DESIGN FREQUENCY	= 50	YRS
DESIGN DISCHARGE	= 12.0	CFS
DESIGN HW ELEVATION	= 1187.1	FT
100 YEAR DISCHARGE	= 13.0	CFS
100 YEAR HW ELEVATION	= 1187.3	FT
OVERTOPPING FREQUENCY	= 500+	YRS
OVERTOPPING DISCHARGE	= 36.0	CFS
OVERTOPPING ELEVATION	= 1191.8	FT

5/14/2018 5:10/2018 B:\4448_PDX_PFL13.dgn