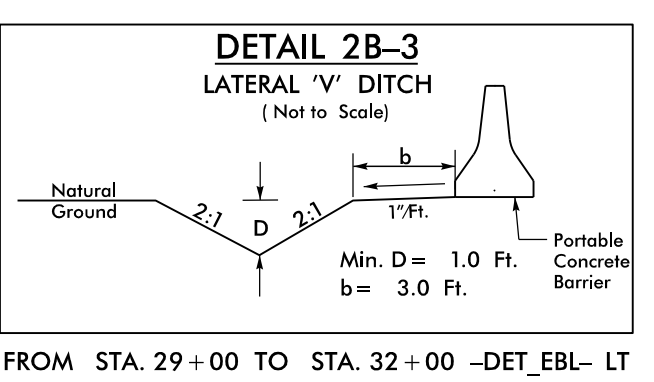
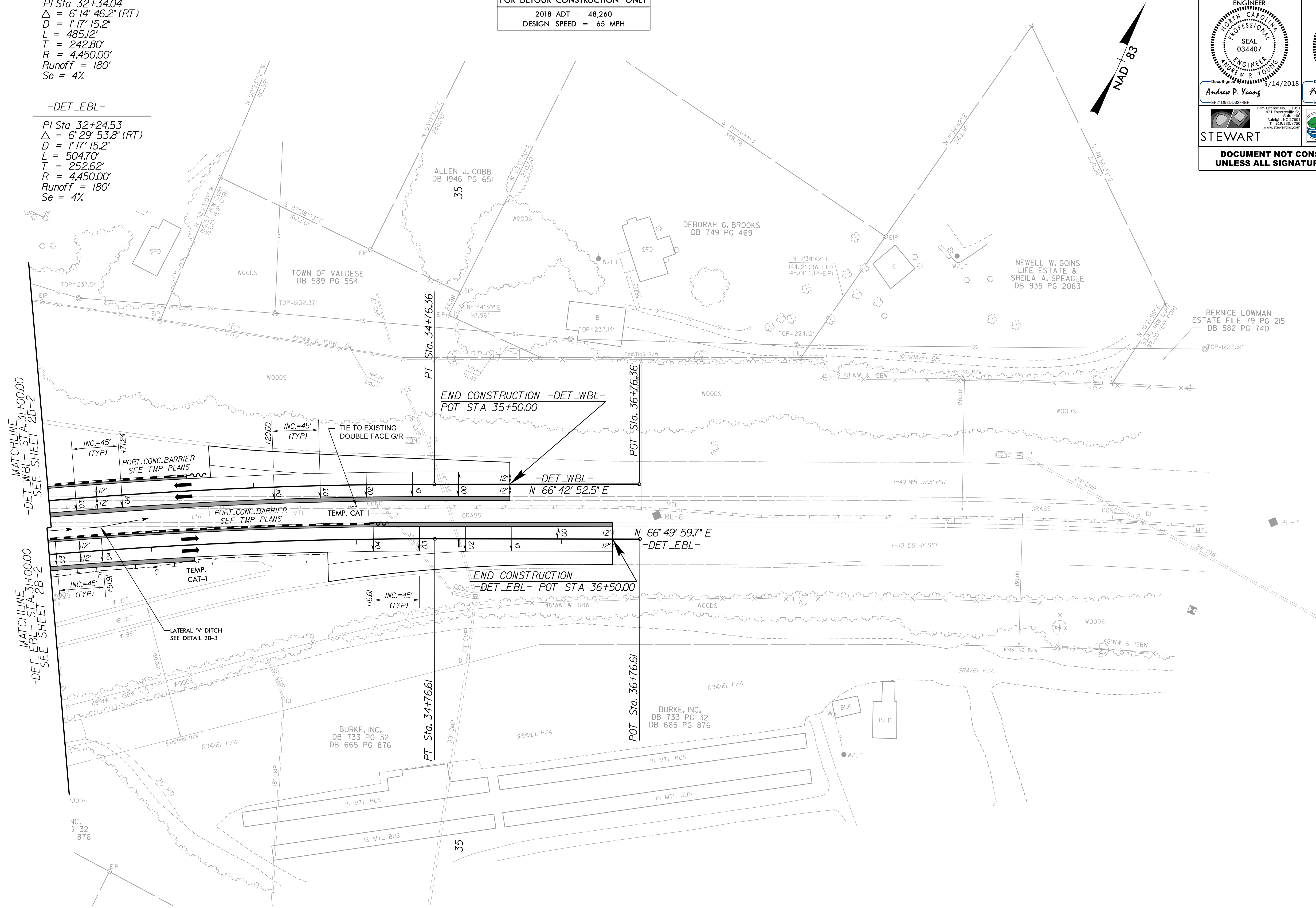


PROJECT REFERENCE NO. B-4448	SHEET NO. 2B-3
ROADWAY DESIGN ENGINEER ANDREW P. YOUNG PROFESSIONAL SEAL 034407 5/14/2018	HYDRAULICS ENGINEER FRANK F. FLEMING PROFESSIONAL SEAL 20147 5/14/2018
STEWART	ECOLOGICAL ENGINEERING
DOCUMENT NOT CONSIDERED FINAL UNLESS ALL SIGNATURES COMPLETED	

FOR DETOUR CONSTRUCTION ONLY
2018 ADT = 48,260
DESIGN SPEED = 65 MPH

-DET_WBL-
PI Sta 32+34.45
 $\Delta = 6' 14' 46.2''$ (RT)
D = 1'17' 15.2"
L = 485.12'
T = 242.80'
R = 4,450.00'
Runoff = 180'
Se = 4%

-DET_EBL-
PI Sta 32+24.53
 $\Delta = 6' 29' 53.8''$ (RT)
D = 1'17' 15.2"
L = 504.70'
T = 252.62'
R = 4,450.00'
Runoff = 180'
Se = 4%



FROM STA. 29+00 TO STA. 32+00 -DET_EBL- LT

FOR -DET_WBL- PROFILE, SEE SHEET 15

FOR -DET_EBL- PROFILE, SEE SHEET 17

REVISIONS

5/14/2018 B4448_PSDY_PSH02B-3.dgn