

SURVEY CONTROL SHEET B-5400 (FINAL)

PROJECT REFERENCE NO.	SHEET NO.
B-5400	1C-1
Location and Surveys	

GPS POINT	DESC.	NORTH	EAST	ELEVATION	L STATION	OFFSET
GPS1	GPS1 (B5400-1)	659030.9229	898255.0845	2189.75	OUTSIDE PROJECT LIMITS	
GPS2	GPS2 (B5400-2)	659769.2750	898504.8570	2194.57	OUTSIDE PROJECT LIMITS	

BL POINT	DESC.	NORTH	EAST	ELEVATION	L STATION	OFFSET
1	BL-1	658000.2304	897620.1670	2187.35	10+25.45	67.16 LT
2	BL-2	657866.0906	897651.6132	2189.21	11+39.54	11.41 RT
3	BL-3	657662.3211	897748.9333	2190.49	13+66.45	11.39 RT

BY POINT	DESC.	NORTH	EAST	ELEVATION	Y1 STATION	OFFSET
5	BY-5	658122.1296	897745.3790	2187.96	10+10.25	16.29 LT
1	BL-1	658000.2304	897620.1670	2187.35	11+39.54	12.19 LT
4	BY-4	657797.4486	897465.7792	2189.68	14+43.46	12.46 LT

BY1 POINT	DESC.	NORTH	EAST	ELEVATION	Y2 STATION	OFFSET
6	BY1-6	658067.6369	897817.5695	2183.43	10+26.49	13.42 LT
2	BL-2	657866.0906	897651.6132	2189.21	OUTSIDE PROJECT LIMITS	

.....
 BM1 ELEVATION = 2185.95
 N 658061 E 897707
 Y1 STATION 10+77.09 19.23' LEFT
 R/R SPIKE SET IN ROOT OF 14" POPLAR

.....
 BM2 ELEVATION = 2189.22
 N 657751 E 897672
 L STATION 12+56.93 24.19' RIGHT
 R/R SPIKE SET IN ROOT OF 12" WALNUT

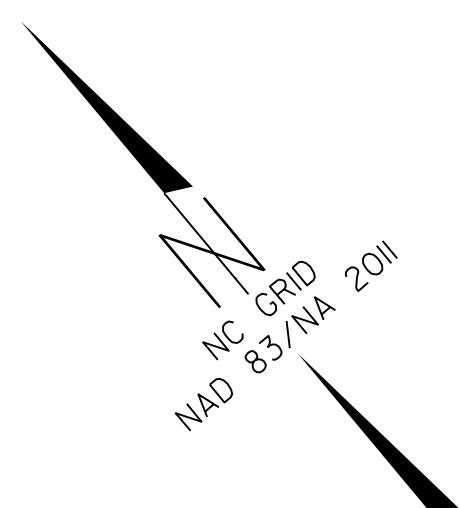
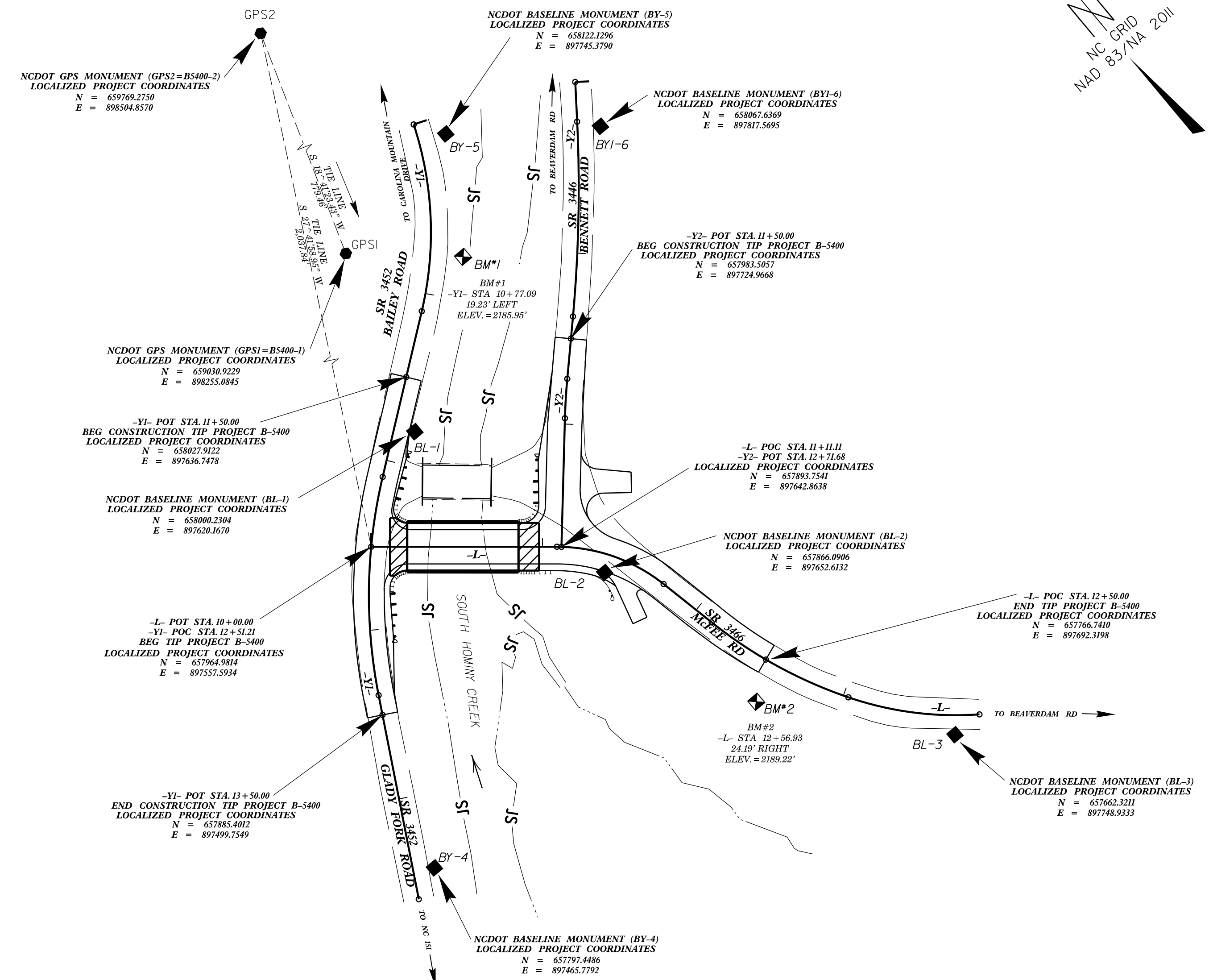
NOTES:

- INDICATES GEODETIC CONTROL MONUMENTS USED OR SET FOR HORIZONTAL AND VERTICAL PROJECT CONTROL BY THE NCDOT LOCATION AND SURVEYS UNIT.
 PROJECT CONTROL ESTABLISHED USING GNSS (GLOBAL NAVIGATION SATELLITE SYSTEM).

THE CONTROL DATA FOR THIS PROJECT CAN BE FOUND ELECTRONICALLY BY SELECTING PROJECT CONTROL DATA AT:
[HTTPS://CONNECT.NCDOT.GOV/RESOURCES/LOCATION/](https://connect.ncdot.gov/resources/location/)

THE FILES TO BE FOUND ARE AS FOLLOWS:
 TIP####_LS_CONTROL_DATE.HTML

SITE CALIBRATION INFORMATION HAS NOT BEEN PROVIDED FOR THIS PROJECT. IF FURTHER INFORMATION IS NEEDED, PLEASE CONTACT THE LOCATION AND SURVEYS UNIT.



DATUM DESCRIPTION

THE LOCALIZED COORDINATE SYSTEM DEVELOPED FOR THIS PROJECT IS BASED ON THE STATE PLANE COORDINATES ESTABLISHED BY NCDOT FOR MONUMENT "GPS2 (B-5400-2)" WITH NAD 83/NA 2011 STATE PLANE GRID COORDINATES OF NORTHING: 659769.2750(ft) EASTING: 898504.8570(ft) ELEVATION: 2194.57(ft)

THE AVERAGE COMBINED GRID FACTOR USED ON THIS PROJECT (GROUND TO GRID) IS: 0.9997823

THE N.C. LAMBERT GRID BEARING AND LOCALIZED HORIZONTAL GROUND DISTANCE FROM "GPS2 (B-5400-2)" TO -L- STATION 10+00 IS
 S 27°41'58.95" W 2,037.84'

ALL LINEAR DIMENSIONS ARE LOCALIZED HORIZONTAL DISTANCES
 VERTICAL DATUM USED IS NAVD 88

NOTE: DRAWING NOT TO SCALE

3/15/2018 1:15:15 PM \\h:\hwy\p\proj\B5400-1s_1c-1.dgn