

PAVEMENT SCHEDULE	
C1	PROP. APPROX. 2" ASPHALT CONCRETE SURFACE COURSE, TYPE S9.5C, AT AN AVERAGE RATE OF 224 LBS. PER SQ. YD.
E1	PROP. APPROX. 5" ASPHALT CONCRETE BASE COURSE, TYPE B25.0C, AT AN AVERAGE RATE OF 570 LBS. PER SQ. YD.

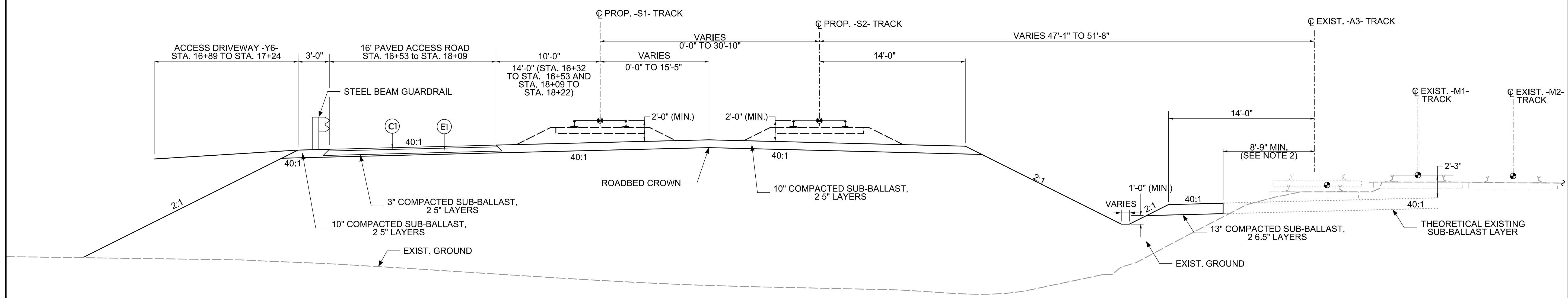
**HNTB** HNTB NORTH CAROLINA, P.C.  
343 E. Six Forks Road, Suite 200  
Raleigh, North Carolina 27609  
NC License No: C-1554

PROJECT REFERENCE NO. P-5705BA SHEET NO. 2A

DATE: MARCH 16, 2018

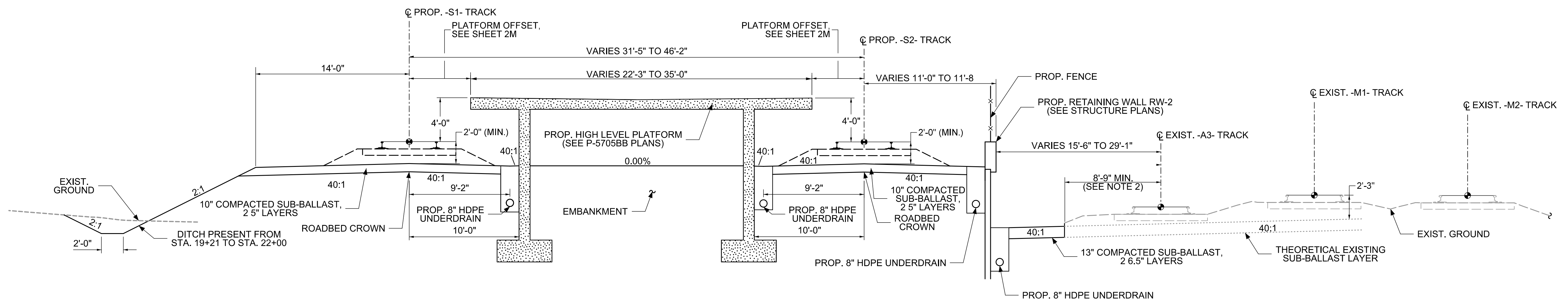
R/W SHEET NO.

RAILROAD DESIGN ENGINEER	PAVEMENT DESIGN ENGINEER



**TYPICAL SECTION #3**  
-S1- STA. 16+32 (+/- END BRIDGE) TO STA. 18+22 (+/- BEGIN BRIDGE)

- NOTES:
1. THE TYPICAL SECTIONS TAKE PRECEDENCE OVER THE CROSS SECTIONS. CROSS SECTIONS ARE PROVIDED FOR REFERENCE ONLY.
  2. DIMENSION SHOWN IS FOR BIDDING PURPOSES ONLY AND MUST BE COORDINATED WITH THE NORFOLK SOUTHERN REPRESENTATIVE PRIOR TO CONSTRUCTION. SEE 'EXCAVATION ADJACENT TO ACTIVE TRACK DETAIL' FOR REQUIREMENTS.



**TYPICAL SECTION #4**  
-S1- STA. 19+42 (+/- END BRIDGE) TO STA. 22+60 (+/- BEGIN BRIDGE)