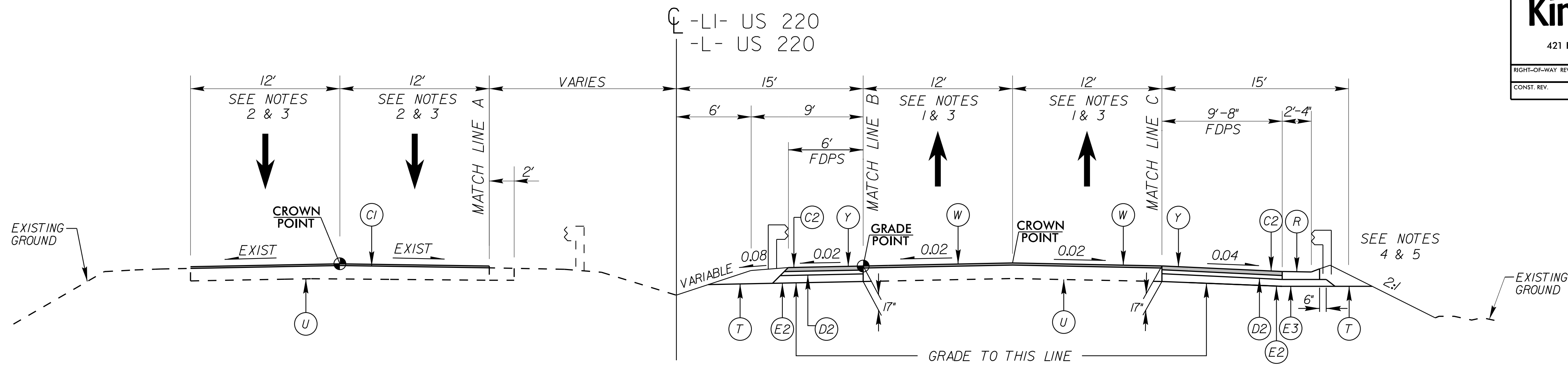


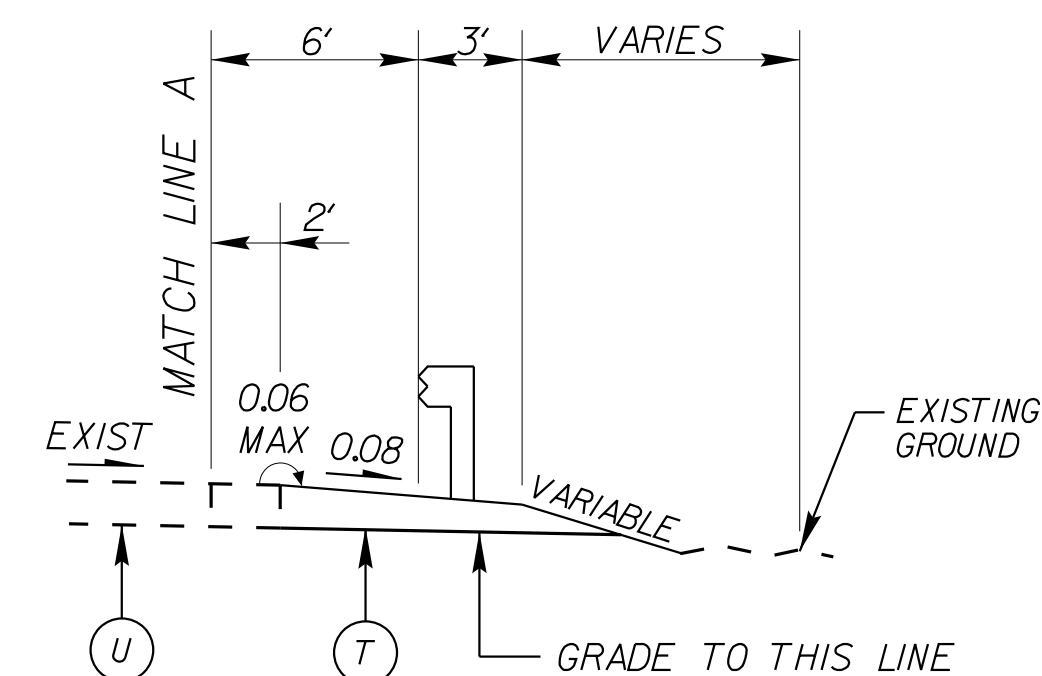
PROJECT REFERENCE NO. B-5352	SHEET NO. 2A-1
ROADWAY DESIGN ENGINEER Kimley W. Horn 02443668	PAVEMENT DESIGN ENGINEER 3/28/2018 SEAL 022896 C. MORRISON
<p>DOCUMENT NOT CONSIDERED FINAL UNLESS ALL SIGNATURES COMPLETED</p>	

REVISIONS



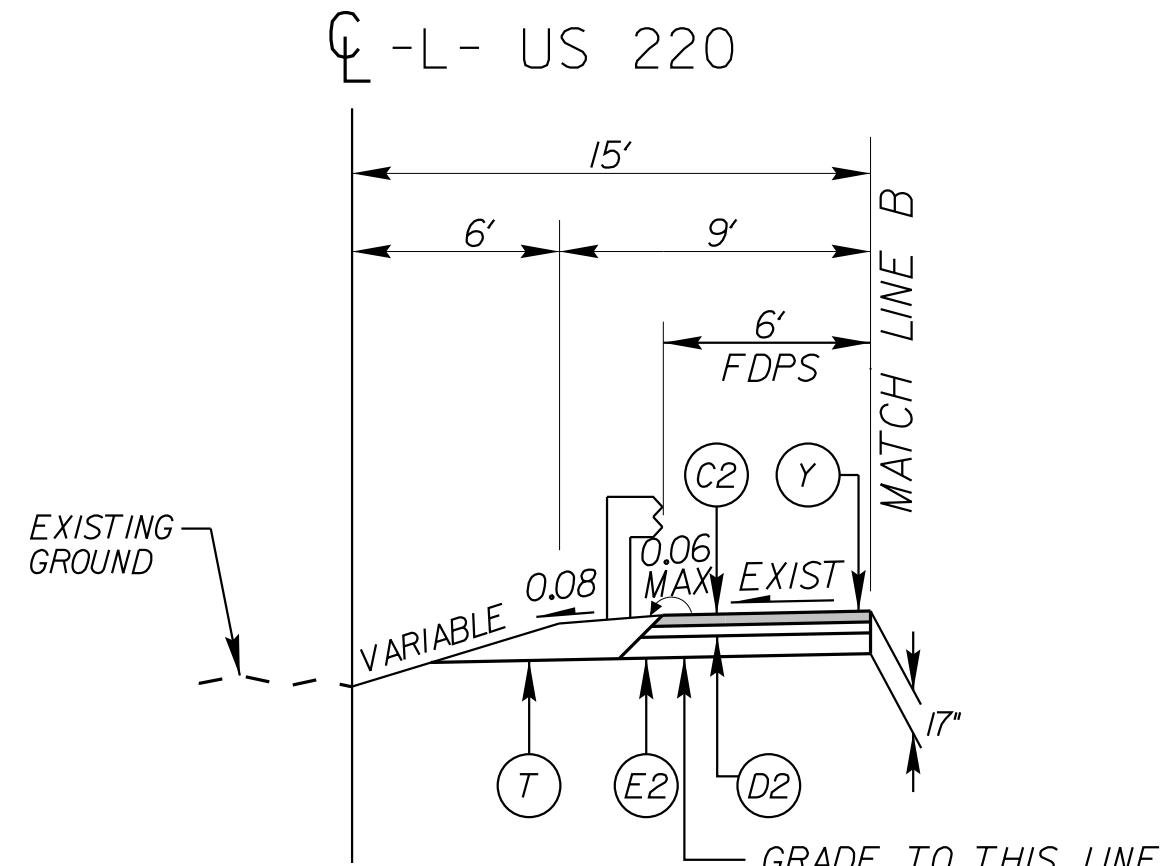
TYPICAL SECTION NO. 1

-LI- STA 51+80.00 TO STA 65+00.00 (LB)
-L- STA 10+00.00 (LA) TO STA 21+38.22 (BEGIN BRIDGE)
-L- STA 23+00.22 (END BRIDGE) TO STA 29+00.00



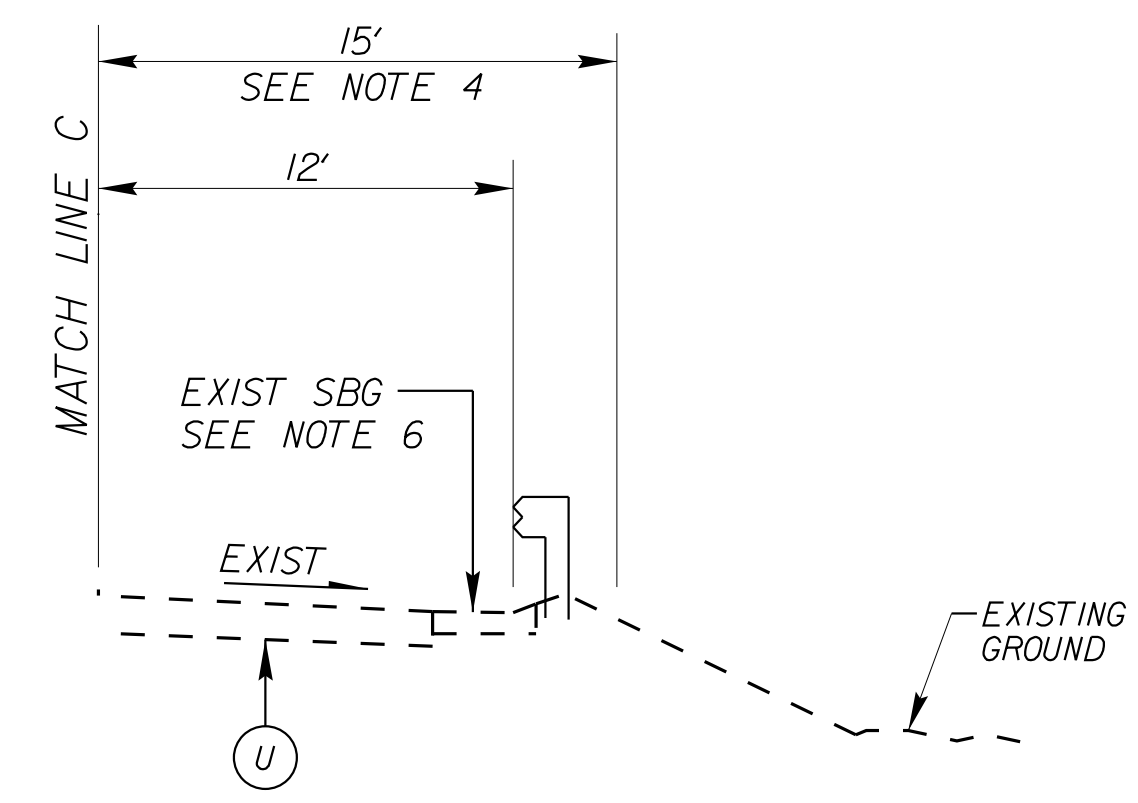
TYPICAL SECTION NO. 1A

-L- STA 15+51.07 TO STA 16+92.70 - SBL MEDIAN
-L- STA 26+37.53 TO STA 27+71.52 - SBL MEDIAN



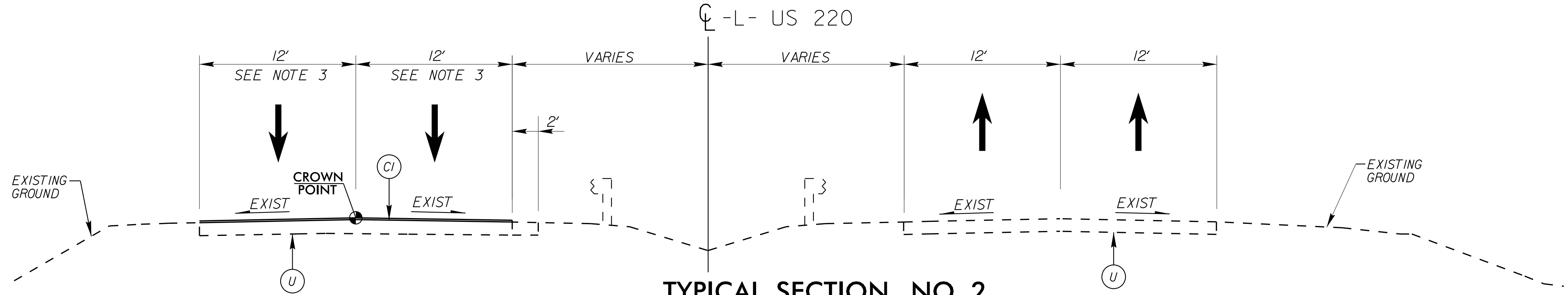
TYPICAL SECTION NO. 1B

-L- STA 14+38.38 TO STA 17+64.00 (RT) - NBL MEDIAN
-L- STA 16+92.70 TO STA 21+43.92 (LT) - SBL MEDIAN
-L- STA 22+86.81 TO STA 26+37.53 (LT) - SBL MEDIAN



TYPICAL SECTION NO. 1C

-L- STA 14+28.00 TO STA 17+64.00 (RT)
-L- STA 25+67.00 TO STA 29+00.00 (RT)

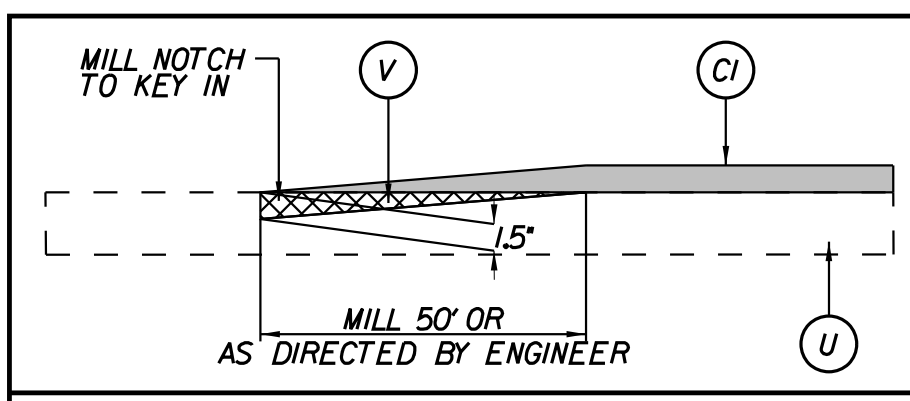


TYPICAL SECTION NO. 2

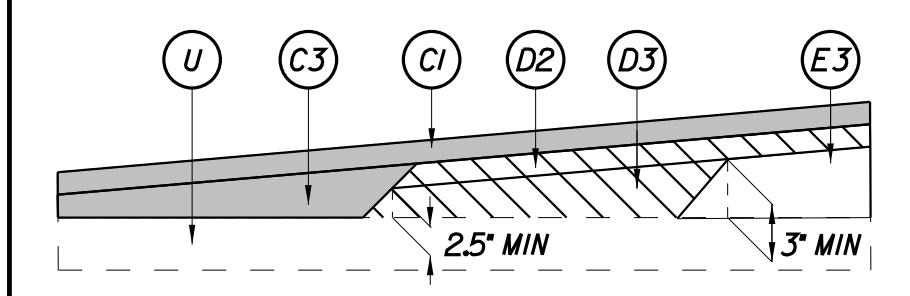
-L- STA 29+00.00 TO STA 39+69.62

NOTES:

- 1) OVERLAY FROM -LI- STA 51+80.00 TO STA 65+00.00 (RT), FROM -L- STA 10+00.00 TO STA 17+64.00 (RT) AND FROM -L- STA 25+67.00 TO STA 29+00.00 (RT) (1.5" S9.5C)
- 2) OVERLAY FROM -L- STA 14+43.00 TO STA 21+32.33 (LT) AND FROM -L- STA 22+87.67 TO STA 29+00.00 (LT) (1.5" S9.5C)
- 3) MILL NOTCH TO KEY-IN S9.5C FROM -LI- STA 51+80.00 TO STA 52+30.00 (RT), -L- STA 14+43.00 TO STA 14+93.00 (LT), -L- STA 28+50.00 TO STA 29+00.00 (RT), AND -L- STA 39+19.62 TO STA 39+69.62 (LT)
- 4) SLOPES ARE STEEPER THAN 2:1 IN SOME AREAS TO AVOID SLOPE SLIVERS (SEE CROSS-SECTIONS)
- 5) RETAIN EXISTING GUARDRAIL FROM -L- STA 25+67.00 TO 28+69.27 (RT)
- 6) INSTALL SHOULDER BERM GUTTER FROM -L- STA 14+28.00 TO STA 14+42.00 (RT) AND FROM -L- STA 16+18.00 TO STA 16+46.00 (RT)
- 7) TRANSITION FROM EXISTING TO TYPICAL SECTION NO. 3 -LDET- STA 10+00.00 TO STA 12+11.95
- 8) TRANSITION FROM TYPICAL SECTION NO. 3 TO EXISTING -LDET- STA 13+43.58 TO STA 15+68.55
- 9) TRANSITION FROM TYPICAL SECTION NO. 3 TO EXISTING -LDET- STA 18+94.01 TO STA 21+18.23
- 10) TRANSITION FROM TYPICAL SECTION NO. 3 TO EXISTING -LDET- STA 22+41.75 TO STA 24+58.52
- 11) EXCAVATE DETOUR CROSSOVER AS SHOWN ON DITCH DETAILS (SHEETS 4 & 5) AND CROSS SECTIONS
- 12) PAVEMENT EDGE SLOPES ARE 1:1 UNLESS SHOWN OTHERWISE



PROFILE KEY-IN DETAIL



DETAIL SHOWING METHOD OF WEDGING

K:\RAL_Roadway\01036275 - B-5352\Roadway\Proj\B-5352_rdy_tpadn 3/26/2018