

BILL OF MATERIAL

FOR ONE BENT

BAR	NO.	SIZE	TYPE	LENGTH	WEIGHT
B1	4	#10	1	37'-10"	651
B2	4	#10	STR	35'-2"	605
B3	4	#5	STR	35'-2"	147
B4	12	#4	STR	18'-10"	151
B5	9	#4	STR	2'-11"	18
D1	44	#6	STR	1'-6"	99
S1	32	#5	2	8'-1"	270
S2	14	#4	3	8'-7"	80
U1	4	#4	4	5'-10"	16
U2	4	#4	4	5'-0"	13
U3	2	#9	4	10'-1"	69
U4	2	#4	4	4'-2"	6
U5	35	#4	4	4'-2"	97

REINFORCING STEEL (FOR ONE BENT) 2222 LBS

CLASS A CONCRETE BREAKDOWN (FOR ONE BENT)

TOTAL CLASS A CONCRETE ▲ 10.6 C.Y.

PP 18 x 0.50 GALVANIZED STEEL PILES (FOR ONE BENT)

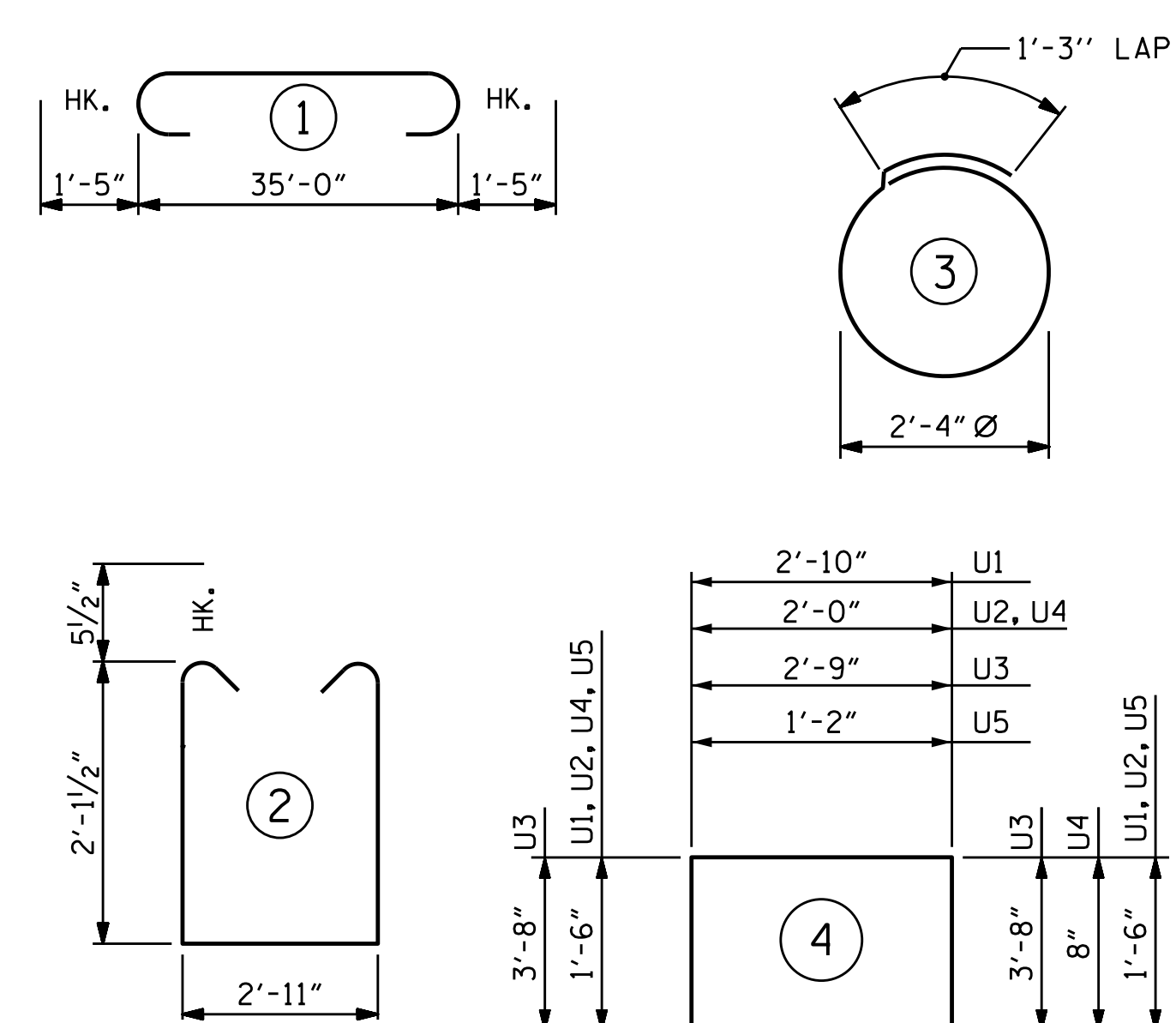
No. 7 LIN. FT. 490.0

PILE DRIVING EQUIPMENT SETUP FOR PP 18 x 0.50 GALVANIZED STEEL PILES (FOR ONE BENT)

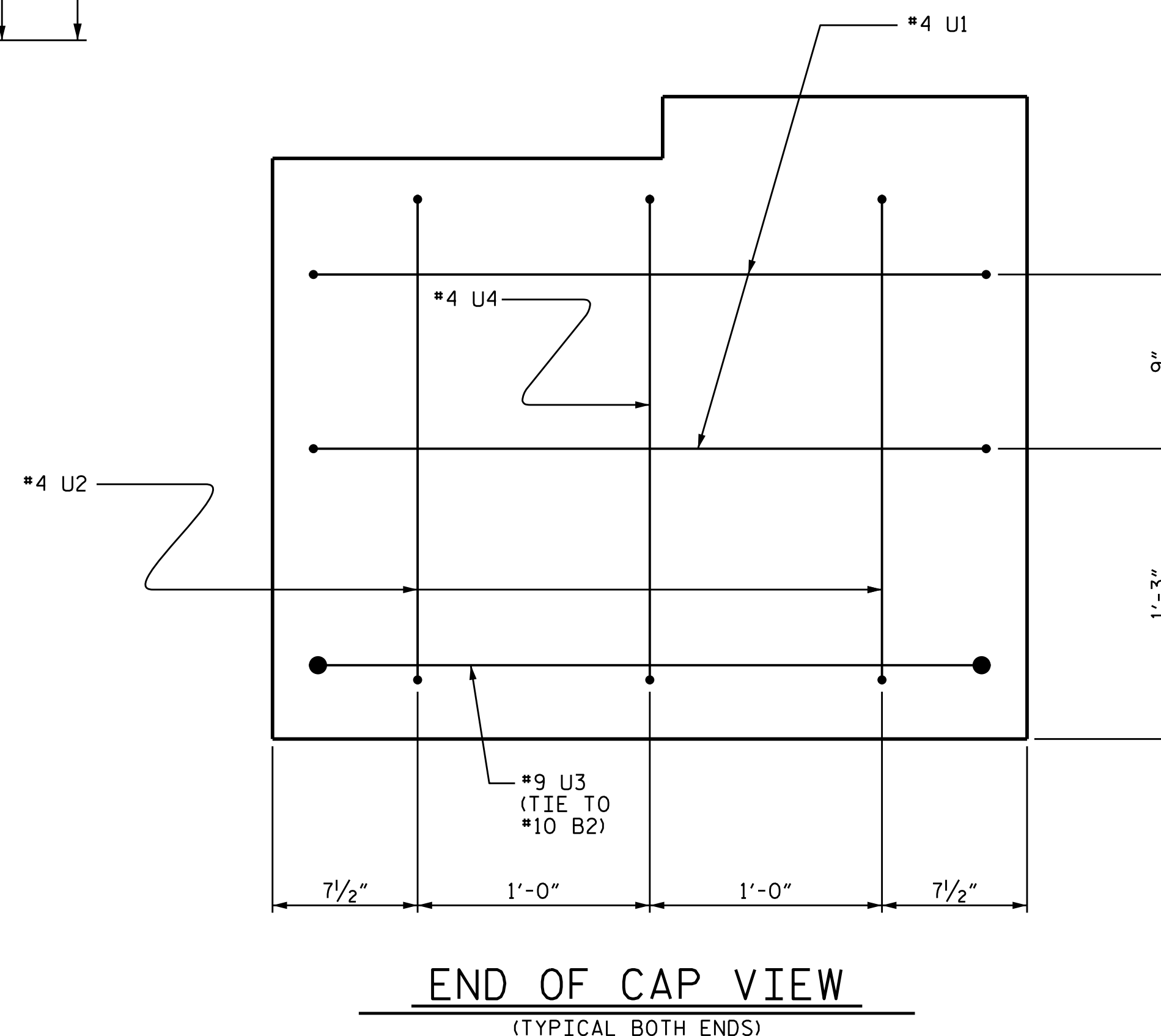
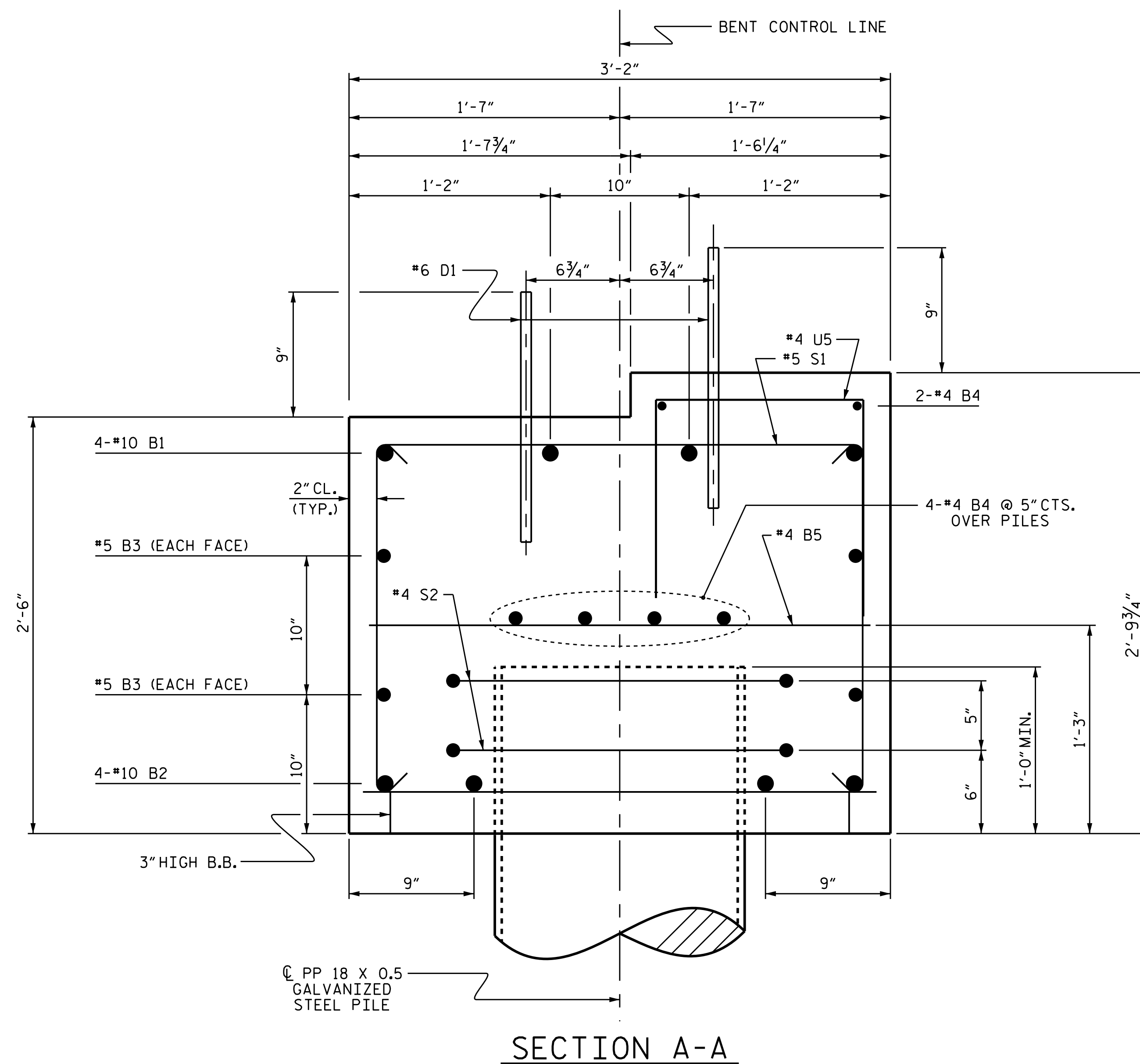
NO. 7

▲ CONCRETE DISPLACED BY THE PP 18 x 0.50 GALVANIZED STEEL PILES HAS BEEN DEDUCTED FROM THE CONCRETE QUANTITY.

BAR TYPES

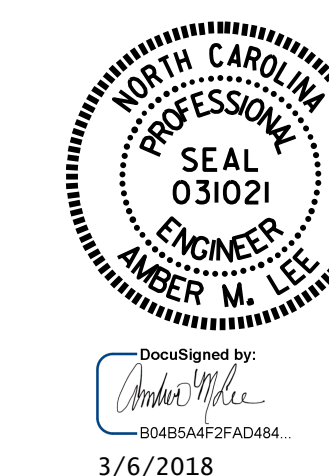


ALL BAR DIMENSIONS ARE OUT TO OUT.



PROJECT NO. B-5407
 POLK COUNTY
 STATION: 13+52.00 -L-
 SHEET 2 OF 3

STATE OF NORTH CAROLINA
 DEPARTMENT OF TRANSPORTATION
 RALEIGH
 SUBSTRUCTURE
 BENT 1



DocuSigned by:
 Amber M. Lee
 3/6/2018

DOCUMENT NOT CONSIDERED FINAL UNLESS ALL SIGNATURES COMPLETED

REVISIONS						SHEET NO.	
NO.	BY:	DATE:	NO.	BY:	DATE:	S-21	
1			3			TOTAL SHEETS	24
2			4				

ASSEMBLED BY: A. GODFREY DATE: 10/27/17
 CHECKED BY: G. KOUCHEKI DATE: 12/13/17
 DRAWN BY: DGE 05/10
 CHECKED BY: MKT 05/10 REV. 6/17 MAA/THC