

HALF SECTION  
AT INTERMEDIATE DIAPHRAGMS

TYPICAL SECTION

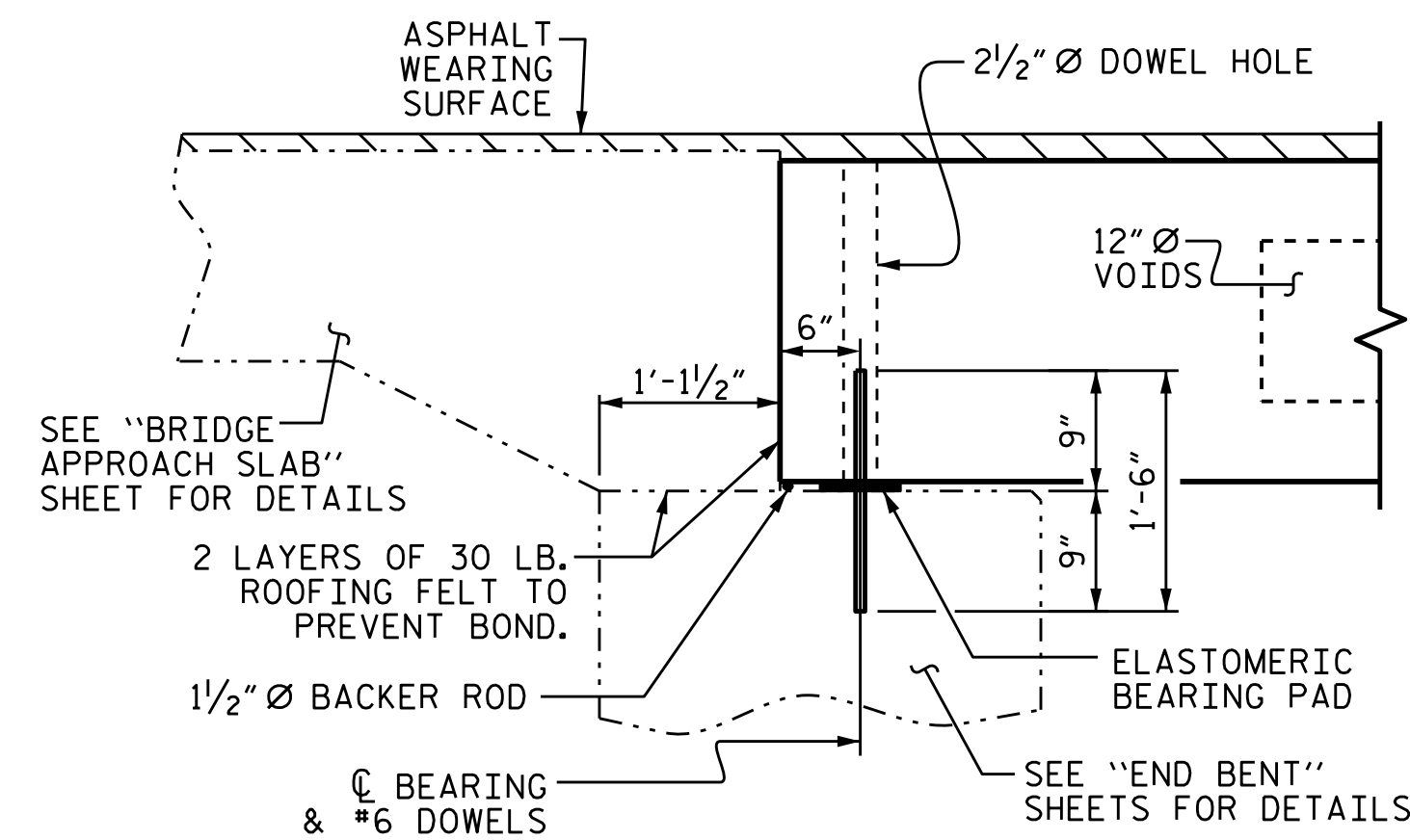
HALF SECTION  
THROUGH VOIDS

\* - THE MAXIMUM PARAPET HEIGHT AND ASPHALT THICKNESS IS SHOWN. THE HEIGHT OF THE PARAPET AND ASPHALT THICKNESS VARIES WHILE THE TOP OF THE PARAPET FOLLOWS THE PROFILE OF THE GUTTERLINE. FOR PARAPET HEIGHT DETAILS AND ASPHALT THICKNESS, SEE THE "PARAPET FOR TWO BAR METAL RAIL ON CORED SLABS" DETAIL.

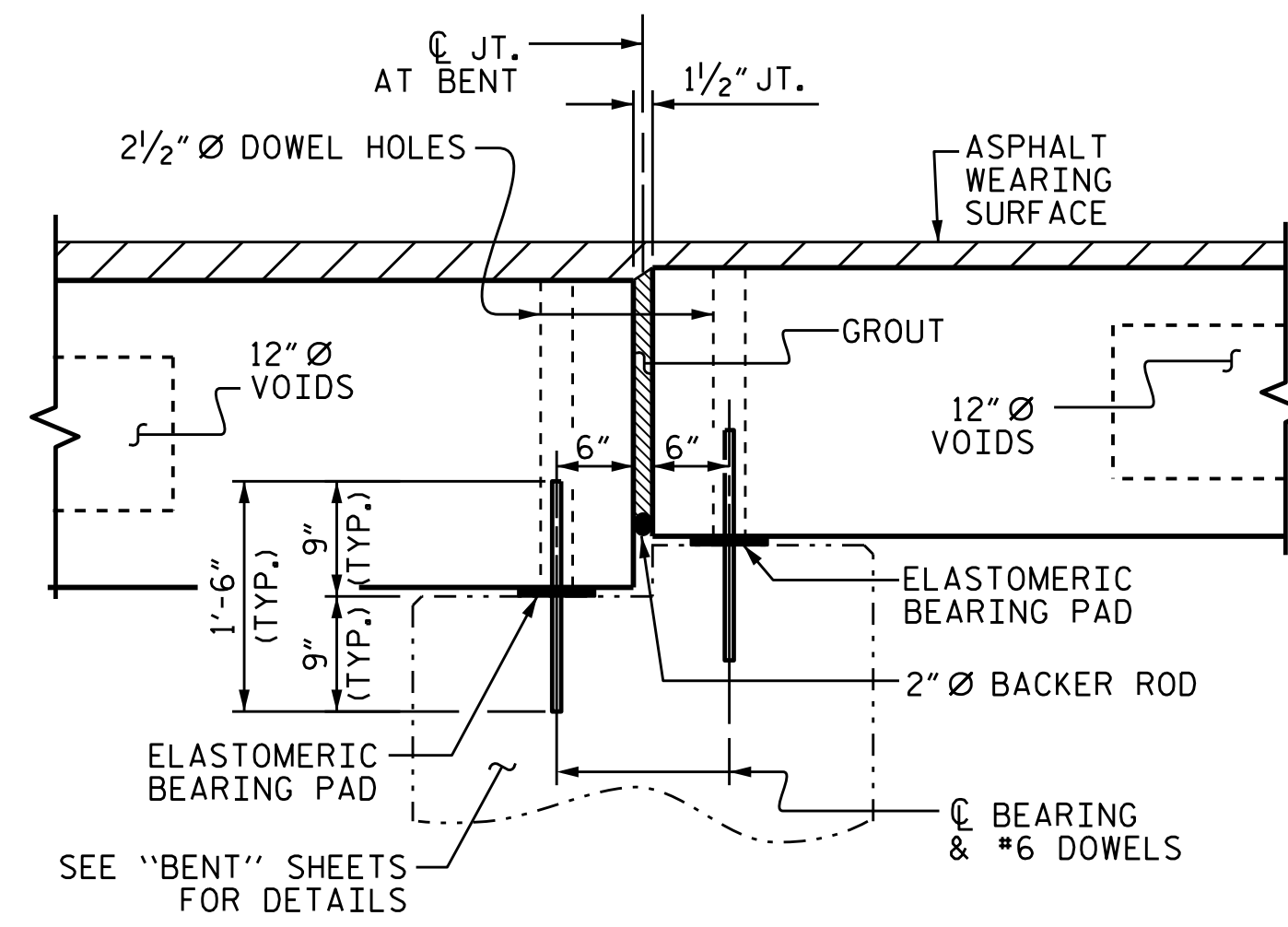
FIXED END

FIXED END  
SPAN A

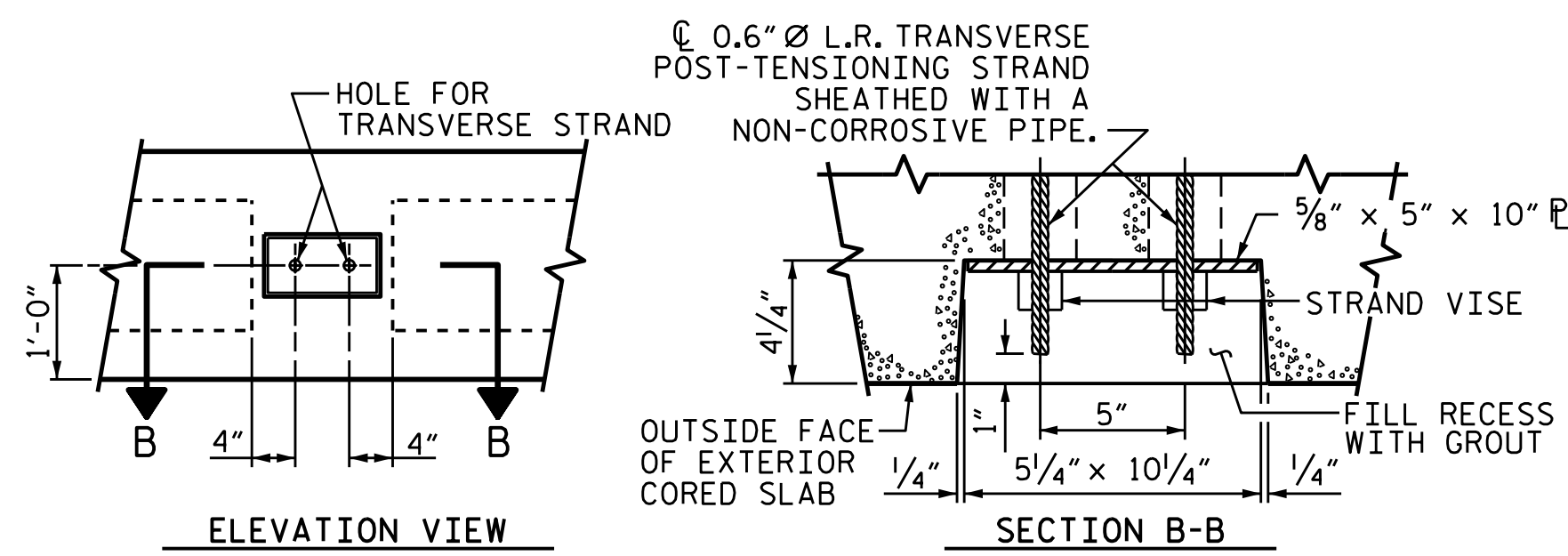
FIXED END  
SPAN B



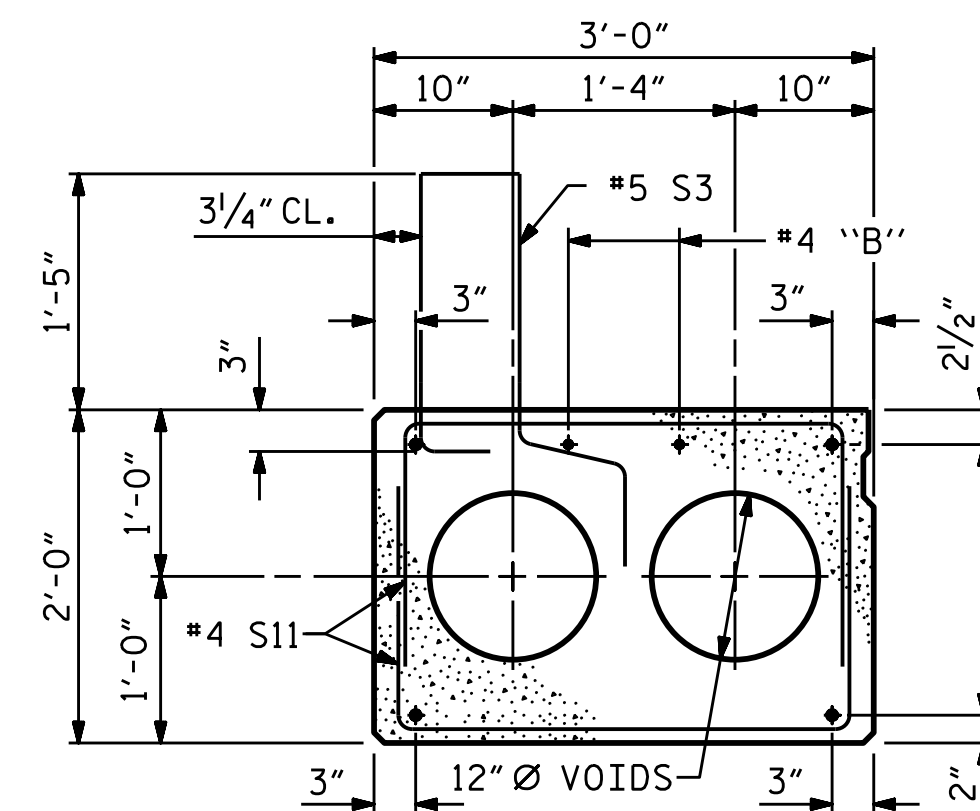
SECTION AT END BENT 1



SECTION AT BENT 1

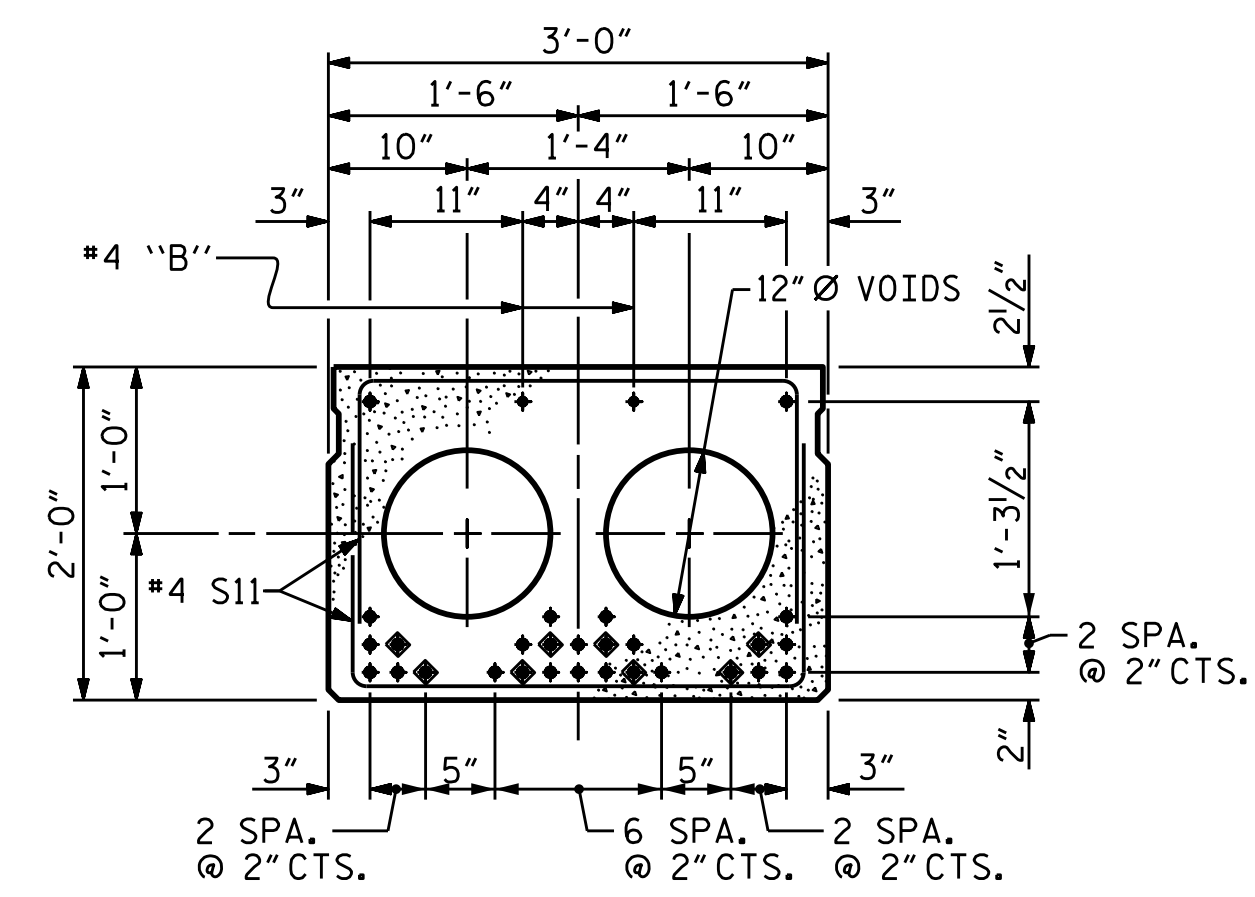


GROUTED RECESS AT END OF  
POST-TENSIONED STRAND-CORED SLABS



EXTERIOR SLAB SECTION

(FOR PRESTRESSED STRAND LAYOUT, SEE INTERIOR SLAB SECTION.)



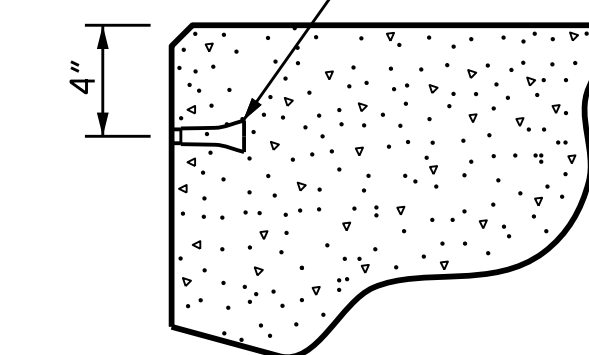
INTERIOR SLAB SECTION (70' UNIT)

RELAXATION STRAND LAYOUT

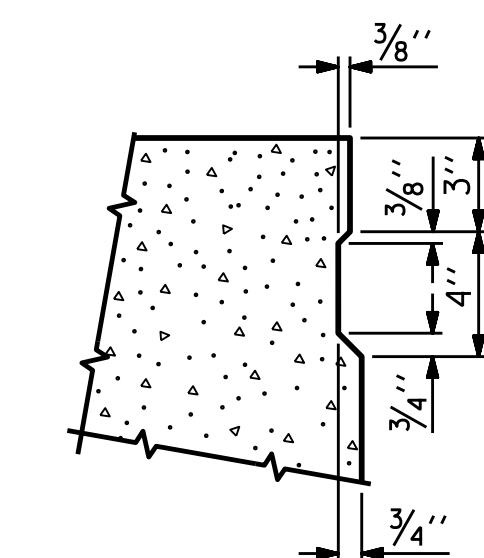
◆ BOND SHALL BE BROKEN ON THESE STRANDS FOR A DISTANCE OF 12'-0" FROM END OF CORED SLAB UNIT. SEE STANDARD SPECIFICATIONS, ARTICLE 1078-7.

DEBONDING LEGEND

PERMITTED THREADED INSERT CAST IN OUTSIDE FACE OF EXTERIOR UNIT AND RECESSED 3/8" SIZE TO BE DETERMINED BY CONTRACTOR.

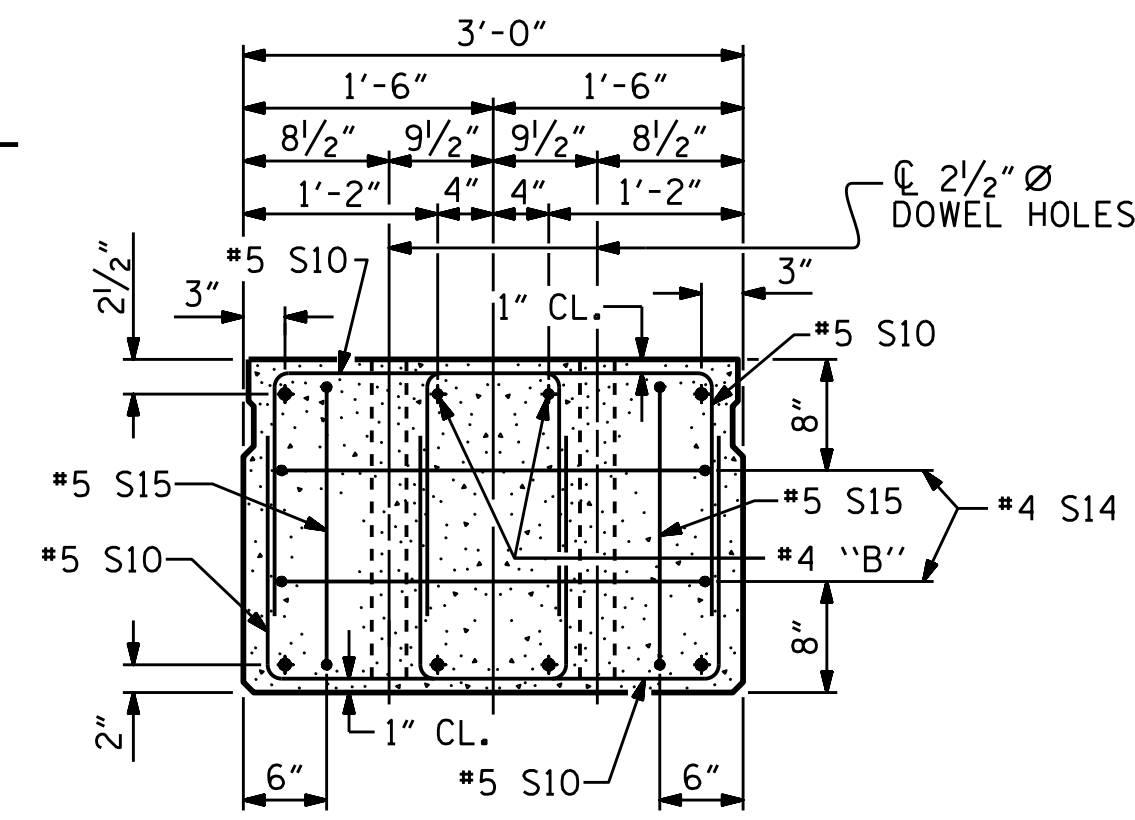


THREADED INSERT DETAIL



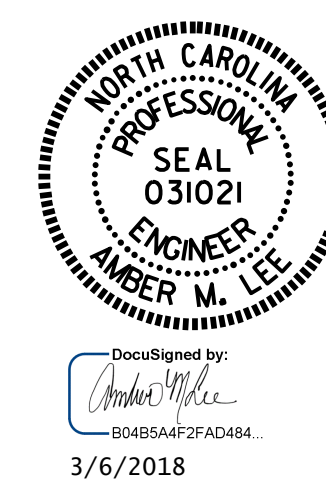
SHEAR KEY DETAIL

NOTE: OMIT SHEAR KEY ON OUTSIDE FACE OF EXTERIOR CORED SLABS.



END ELEVATION

SHOWING PLACEMENT OF DOUBLE STIRRUPS AND LOCATION OF DOWEL HOLES. (STRAND LAYOUT NOT SHOWN.) INTERIOR SLAB UNIT SHOWN-EXTERIOR SLAB UNIT SIMILAR EXCEPT SHEAR KEY LOCATION.



PROJECT NO. B-5407  
POLK COUNTY  
STATION: 13+52.00 -L-  
SHEET 1 OF 5

STATE OF NORTH CAROLINA  
DEPARTMENT OF TRANSPORTATION  
RALEIGH  
STANDARD  
3'-0" X 2'-0"  
PRESTRESSED CONCRETE  
CORED SLAB UNIT  
SPAN A  
90° SKEW

| REVISIONS |      | SHEET NO. |      |
|-----------|------|-----------|------|
| NO.       | DATE | NO.       | DATE |
| 1         |      | 3         |      |
| 2         |      | 4         |      |

|                           |                |
|---------------------------|----------------|
| ASSEMBLED BY : A. GODFREY | DATE : 09/2017 |
| CHECKED BY : G. KOUCHEKI  | DATE : 12/2017 |
| DRAWN BY : MAA            | 6/10           |
| CHECKED BY : MKT          | 7/10           |
| REV. 9/14                 | MAA/TMG        |