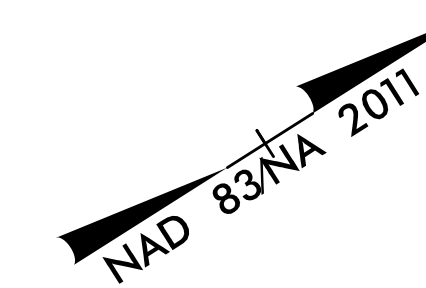




PROJECT REFERENCE NO. B-5407		SHEET NO. EC-05/CONST.04	
RW SHEET NO.			
ROADWAY DESIGN ENGINEER		HYDRAULICS ENGINEER	



-L-

PI Sta 11+79.96	PI Sta 15+51.12
$\Delta = 2^\circ 31' 30.0''$ (RT)	$\Delta = 1^\circ 01' 30.0''$ (LT)
D = 0' 59' 59.7"	D = 0' 44' 59.8"
L = 252.52'	L = 136.68'
T = 126.28'	T = 68.34'
R = 5,730.00'	R = 7,640.00'
SE = 2%	SE = NC
Ro = 48'	VD = 50 mph

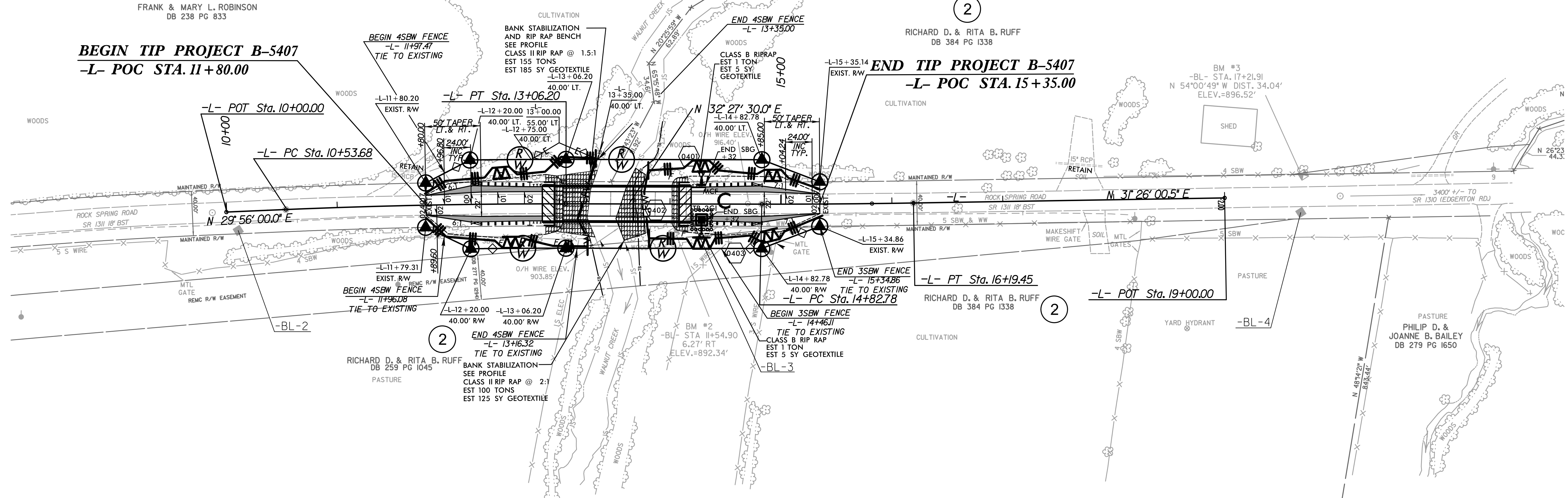
BRIDGE DESCRIPTION:
TWO LANE THREE SPAN BRIDGE WITH A WOOD DECK
AND BST OVERLAY ON STEEL BEAMS WITH TIMBER PIERS.
GUARDRAILS ARE STEEL. HEADWALLS AND WINGWALLS ARE WOOD.
HIGH WATER ELEV. 89' +/-

FRANK & MARY L. ROBINSON
DB 238 PG 833

BEGIN TIP PROJECT B-5407
-L- POC STA. 11+80.00

RICHARD D. & RITA B. RUFF
DB 384 PG 1338

END TIP PROJECT B-5407
-L- POC STA. 15+35.00



PAVED SHOULDER

SEE SHEET 5 FOR -L- PROFILE