

5/14/19

LOCHNER
 H. W. LOCHNER, INC.
 2840 PLAZA PLACE, SUITE 202
 RALEIGH, NC 27612
 (919)571-7111

ECOLOGICAL ENGINEERING
 NC License Number F-0159
 NC FIRM LICENSE No: F-1148
 1151 SE Gary Parkway
 Suite 101
 Cary, NC 27518
 (919) 557-9929

| | |
|--|--|
| PROJECT REFERENCE NO. B-5407 | SHEET NO. 5 |
| ROADWAY DESIGN ENGINEER SEAL 25523 Brian K. Gassett 7/14/2018 | HYDRAULICS ENGINEER SEAL 039102 RANDON T. BARNHAM 7/14/2018 |

DOCUMENT NOT CONSIDERED FINAL UNLESS ALL SIGNATURES COMPLETED

BRIDGE HYDRAULIC DATA

DESIGN DISCHARGE = 2400 CFS
 DESIGN FREQUENCY = 25 YRS
 DESIGN HW ELEVATION = 890.6 FT
 BASE DISCHARGE = 4060 CFS
 BASE FREQUENCY = 100 YRS
 BASE HW ELEVATION = 892.38 FT
 OVERTOPPING DISCHARGE = 3108 CFS
 OVERTOPPING FREQUENCY = 50+ YRS
 OVERTOPPING ELEVATION = 891.5 FT

DATE OF SURVEY = 2/2/2016
 W.S. ELEVATION AT DATE OF SURVEY = 881.4 FT

-L-

CL STA. 13+52.00 -L-
 @ 70' 24" CORED SLAB
 @ 40' 21" CORED SLAB
 W/ 4'-0" CAPS
 GP = 894.47'
 SKEW = 90'

BM #2
 -L- STA 14+03.72
 25.58' RT
 ELEV. = 892.34'

BEGIN GRADE
 -L- STA. 11+80.00
 ELEV. = 898.07'

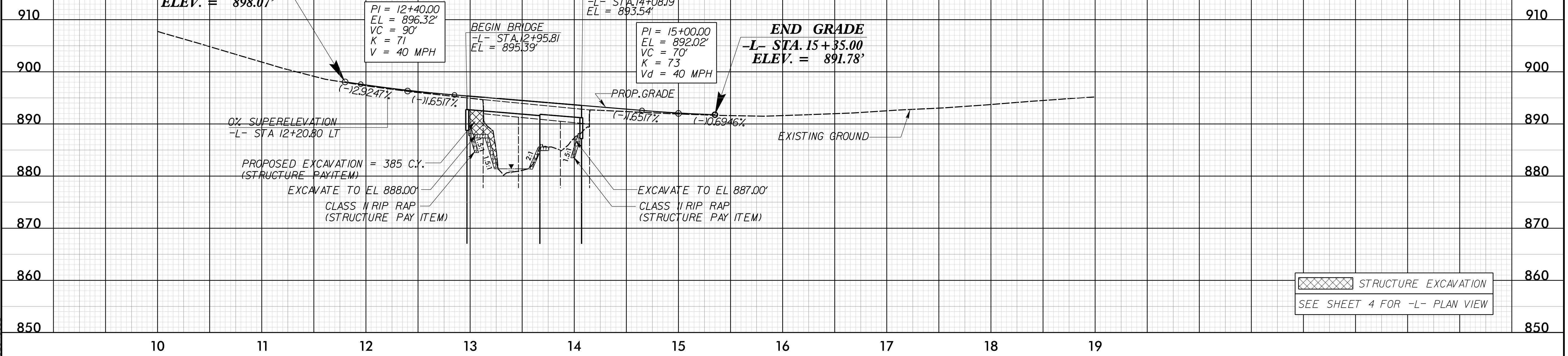
PI = 12+40.00
 EL = 896.32'
 VC = 90'
 K = 71
 V = 40 MPH

BEGIN BRIDGE
 -L- STA. 12+95.81
 EL = 895.39'

END BRIDGE
 -L- STA. 14+08.19
 EL = 893.54'

PI = 15+00.00
 EL = 892.02'
 VC = 70'
 K = 73
 Vd = 40 MPH

END GRADE
 -L- STA. 15+35.00
 ELEV. = 891.78'



STRUCTURE EXCAVATION
 SEE SHEET 4 FOR -L- PLAN VIEW

3/14/2018 B-5407_Roy_P-05.dgn