

# SURVEY CONTROL SHEET B-5407 -FINAL-

BL POINT	DESC.	NORTH	EAST	ELEVATION	L STATION	OFFSET
1	BL-1	605585.6930	1066566.3653	919.37	OUTSIDE PROJECT LIMITS	
2	BL-2	605817.9470	1066691.6819	905.72	10+09.90	17.02 RT
3	BL-3	606168.4227	1066903.2592	891.70	14+20.05	14.93 RT
4	BL-4	606635.6631	1067190.7813	895.04	OUTSIDE PROJECT LIMITS	

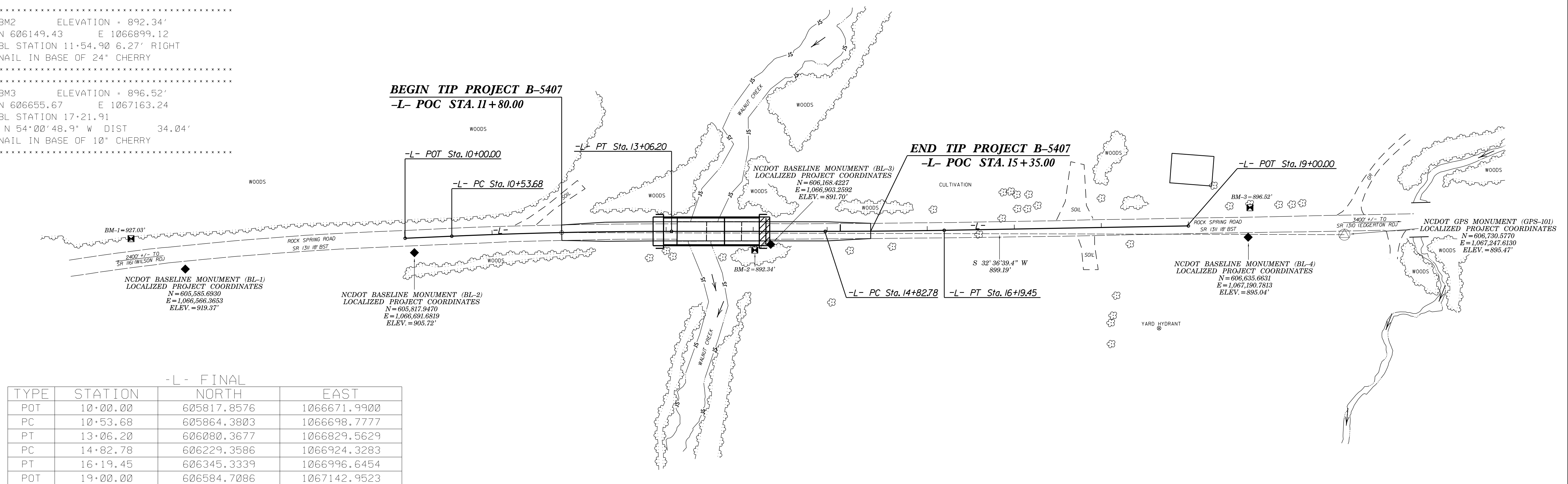
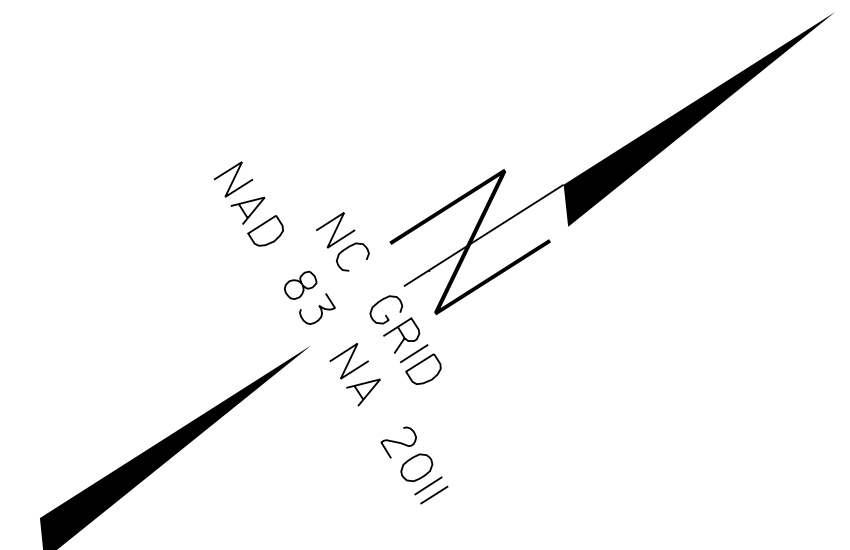
-FINAL- ROW MARKER IRON PIN AND CAP-E

ALIGN	STATION	OFFSET	NORTH	EAST
L	11+80.00	-20.00	605983.50218	1066745.90282
L	12+20.00	-40.00	606028.24191	1066749.77793
L	13+06.20	-40.00	606101.83518	1066795.81162
L	14+82.78	-40.00	606250.82820	1066890.57838
L	15+35.00	-20.00	606284.13588	1066935.25715
L	15+35.00	20.00	606262.89964	1066969.15438
L	14+82.78	40.00	606207.89331	1066958.08094
L	13+06.20	40.00	606258.90029	1066863.31417
L	12+20.00	40.00	605986.32861	1066817.91952
L	11+80.00	20.00	605962.78325	1066780.11869

.....  
 BM1 ELEVATION = 927.03'  
 N 605551.90 E 1066503.39  
 BL STATION 5+00.00  
 S 61°46'57.2" W DIST 71.46'  
 NAIL IN BASE OF 10" POPLAR  
 .....

.....  
 BM2 ELEVATION = 892.34'  
 N 606149.43 E 1066899.12  
 BL STATION 11+54.90 6.27' RIGHT  
 NAIL IN BASE OF 24" CHERRY  
 .....

.....  
 BM3 ELEVATION = 896.52'  
 N 606655.67 E 1067163.24  
 BL STATION 17+21.91  
 N 54°00'48.9" W DIST 34.04'  
 NAIL IN BASE OF 10" CHERRY  
 .....



-L- FINAL

TYPE	STATION	NORTH	EAST
POT	10+00.00	605817.8576	1066671.9900
PC	10+53.68	605864.3803	1066698.7777
PT	13+06.20	606080.3677	1066829.5629
PC	14+82.78	606229.3586	1066924.3283
PT	16+19.45	606345.3339	1066996.6454
POT	19+00.00	606584.7086	1067142.9523

**DATUM DESCRIPTION**

THE LOCALIZED COORDINATE SYSTEM DEVELOPED FOR THIS PROJECT IS BASED ON THE STATE PLANE COORDINATES ESTABLISHED BY NCDOT FOR MONUMENT "GPS-101" WITH NAD 83/NA 2011 STATE PLANE GRID COORDINATES OF NORTHING: 606730.5770(±) EASTING: 1067247.6130(±) ELEVATION: 895.47(±)

THE AVERAGE COMBINED GRID FACTOR USED ON THIS PROJECT (GROUND TO GRID) IS: 0.99983719

THE N.C. LAMBERT GRID BEARING AND LOCALIZED HORIZONTAL GROUND DISTANCE FROM "GPS-101" TO -L- STATION 11+80.00 IS  
 S 32°36'39.4" W 899.19'

ALL LINEAR DIMENSIONS ARE LOCALIZED HORIZONTAL DISTANCES  
 VERTICAL DATUM USED IS NAVD 88

GEOID MODEL: G12NC  
 NOTE: DRAWING NOT TO SCALE

**NOTES:**

1. THE CONTROL DATA FOR THIS PROJECT CAN BE FOUND ELECTRONICALLY BY SELECTING PROJECT CONTROL DATA AT:  
[HTTPS://CONNECT.NCDOT.GOV/RESOURCES/LOCATION/](https://connect.ncdot.gov/resources/location/)

THE FILES TO BE FOUND ARE AS FOLLOWS:  
 B-5407\_LS\_CONTROL.TXT

SITE CALIBRATION INFORMATION HAS NOT BEEN PROVIDED FOR THIS PROJECT. IF FURTHER INFORMATION IS NEEDED, PLEASE CONTACT THE LOCATION AND SURVEYS UNIT.

⊗ INDICATES GEODETIC CONTROL MONUMENTS USED OR SET FOR HORIZONTAL PROJECT CONTROL BY THE NCDOT LOCATION AND SURVEYS UNIT.  
 PROJECT CONTROL ESTABLISHED USING GLOBAL POSITIONING SYSTEM.

6/2/2018 1:12:00 PM L:\2018\B-5407\1c-1.dgn BEASON