

**JACKING NOTES:**

THE BEAM SHALL BE LIFTED ENOUGH THAT THE BEAM CLEARS THE BEARINGS AND ALL LOAD IS SUPPORTED BY THE JACKS. AFTER JACKING IS COMPLETE, THE CONTRACTOR SHALL PROVIDE FOR A METHOD TO REMOVE THE JACKS AND SUPPORT THE BEAM FOR DEAD AND LIVE LOAD DURING THE REPAIR OPERATIONS. IF THE JACKS REMAIN IN PLACE DURING THE ENTIRE JACKING AND REPAIR OPERATION, THEY SHALL HAVE MECHANICAL LOCK OFF CAPABILITIES.

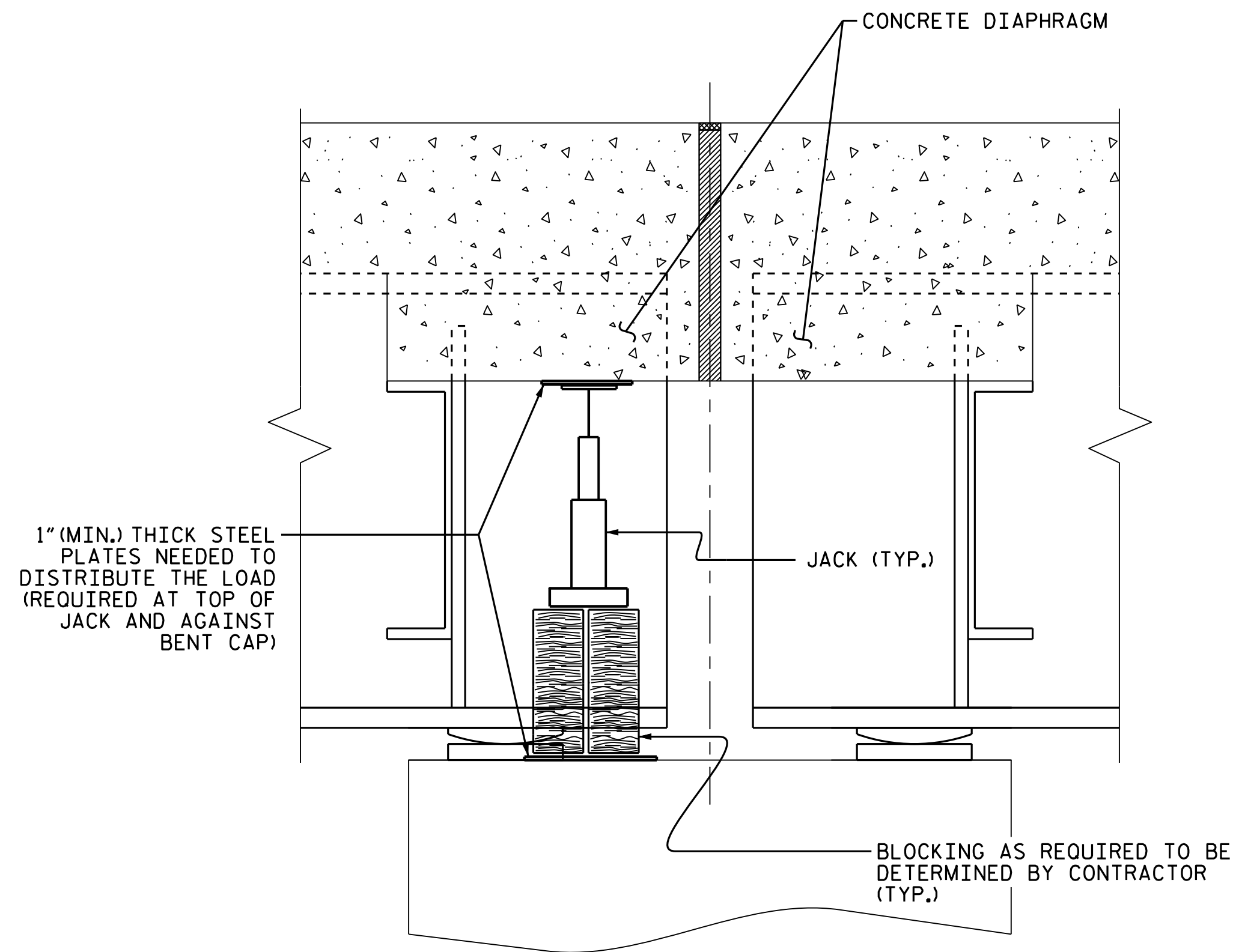
IF, DURING THE JACKING PROCESS, OR WHILE THE BEAM IS BEING SUPPORTED, THE BEAM SHIFTS FROM ITS ORIGINAL POSITION, ALL WORK SHALL CEASE AND THE ENGINEER SHALL BE NOTIFIED IMMEDIATELY.

PRIOR TO JACKING, THE CONTRACTOR SHALL ENSURE THERE ARE NO OBSTACLES PREVENTING THE BEAM FROM BEING LIFTED.

BEARINGS ADJACENT TO THE BEAM BEING JACKED MAY BE LOOSENED TO DECREASE THE RESISTANCE OF THE DECK SLAB DURING JACKING. ALL BEARINGS LOOSENED SHALL BE TIGHTENED BACK AFTER REPAIR OPERATIONS ARE COMPLETED AND THE JACKS AND BLOCKING HAVE BEEN REMOVED.

THE MAXIMUM DIFFERENTIAL BETWEEN ADJACENT BEAMS THAT ARE BEING JACKED IS 1/8".

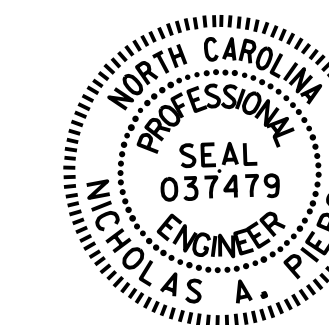
THIS DETAIL IS A GENERIC EXAMPLE OF A JACKING SCHEME AND DOES NOT NECESSARILY REPRESENT SPECIFIC CONDITIONS AT A PARTICULAR BRIDGE. ACTUAL BRIDGE GEOMETRIES, DIMENSIONS, AND CONDITIONS MAY DIFFER FROM THIS DETAIL. PRIOR TO BEGINNING WORK, THE CONTRACTOR SHALL INVESTIGATE THE BRIDGES ON THE PROJECT AND DEVELOP A JACKING PLAN TO BE SUBMITTED FOR REVIEW AND APPROVAL. SEE BRIDGE JACKING SPECIAL PROVISION.



**SECTION THRU DIAPHRAGM**

THIS DETAIL IS A GENERIC EXAMPLE OF A JACKING SCHEME AND DOES NOT NECESSARILY REPRESENT SPECIFIC CONDITIONS AT A PARTICULAR BRIDGE. ACTUAL BRIDGE GEOMETRIES, DIMENSIONS, AND CONDITIONS MAY DIFFER FROM THIS DETAIL. PRIOR TO BEGINNING WORK, THE CONTRACTOR SHALL INVESTIGATE THE BRIDGES ON THE PROJECT AND DEVELOP A JACKING PLAN TO BE SUBMITTED FOR REVIEW AND APPROVAL. SEE BRIDGE JACKING SPECIAL PROVISION.

PROJ. NO. I-5825  
MECKLENBURG COUNTY  
 BRIDGE NO. 215



DocuSigned by:  
 Nicholas Pierce 3/2/2018  
 15110643D0B465

STATE OF NORTH CAROLINA  
 DEPARTMENT OF TRANSPORTATION  
 RALEIGH

**JACKING DETAILS**

DRAWN BY : E. K. POPE DATE : 1/18  
 CHECKED BY : N. A. PIERCE DATE : 1/18

DOCUMENT NOT CONSIDERED  
 FINAL UNLESS ALL  
 SIGNATURES COMPLETED

REVISIONS						SHEET NO.
NO.	BY:	DATE:	NO.	BY:	DATE:	S-31
1			3			TOTAL SHEETS
2			4			31