

NOTES:

CONTRACTOR SHALL FIELD VERIFY THE EXISTING SAWED OPENING PRIOR TO OBTAINING JOINT MATERIAL.

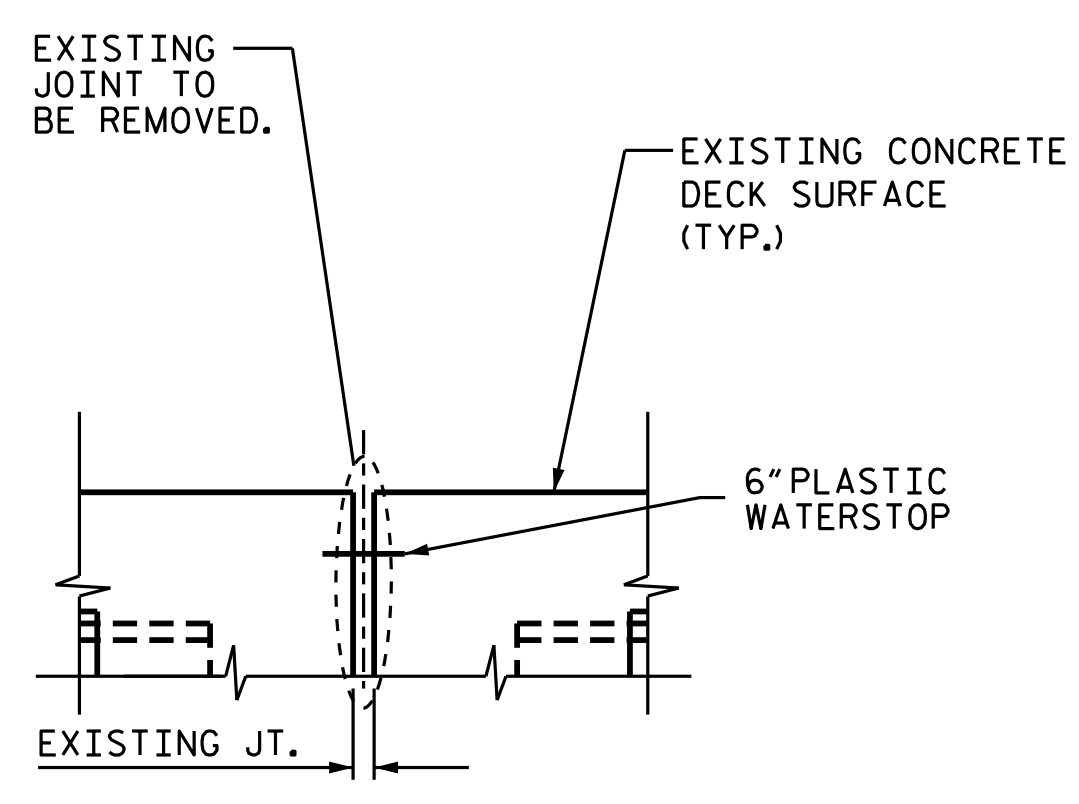
FOR FOAM JOINT SEALS, SEE SPECIAL PROVISIONS.

RETAIN ALL EXISTING REINFORCING STEEL. CLEAN AND REPAIR AS NEEDED.

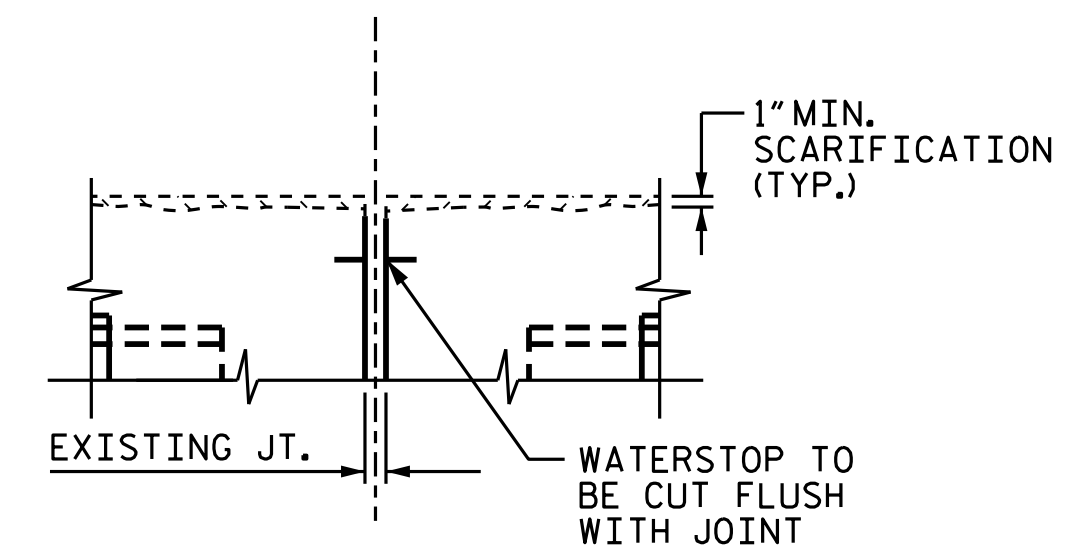
NOMINAL UNCOMPRESSED SEAL WIDTH OF FOAM JOINT SEAL SHALL BE 2".

THE INSTALLED FOAM JOINT SEALS SHALL BE WATERTIGHT.

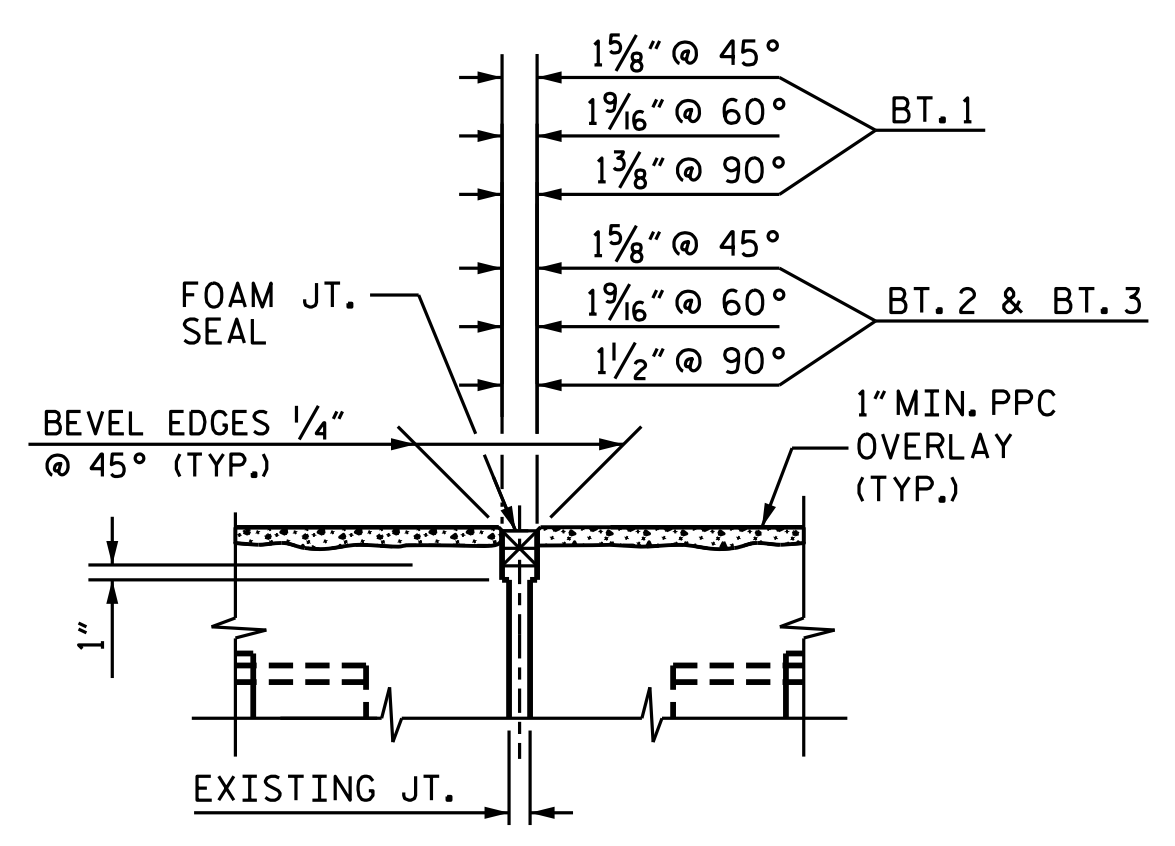
THE CONTRACTOR WILL NOT BE PERMITTED TO FORM THE JOINT FOR THE FOAM JOINT SEAL IN LIEU OF SAWING THE JOINT.



EXISTING JOINT

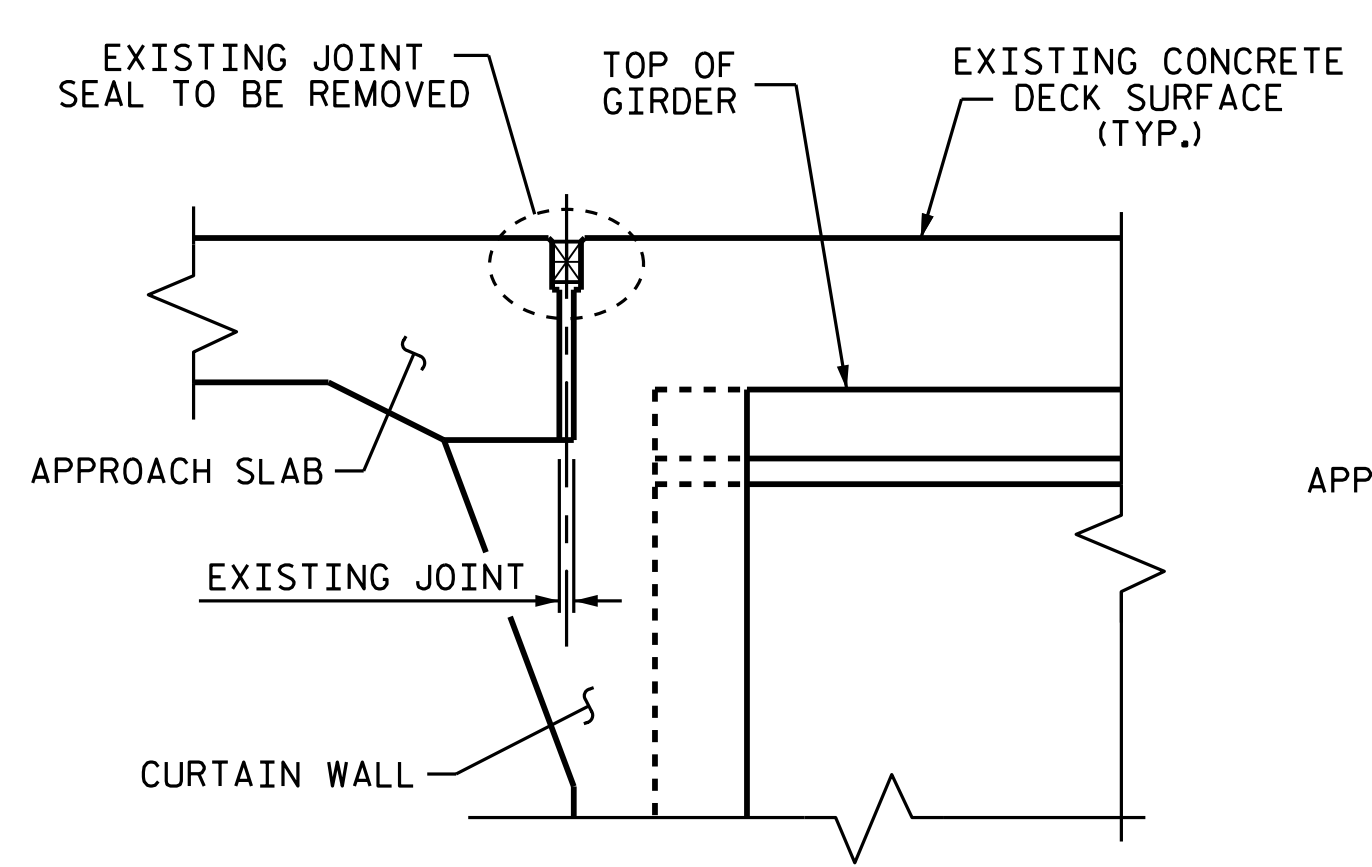


MINIMUM EXISTING JOINT DEMOLITION

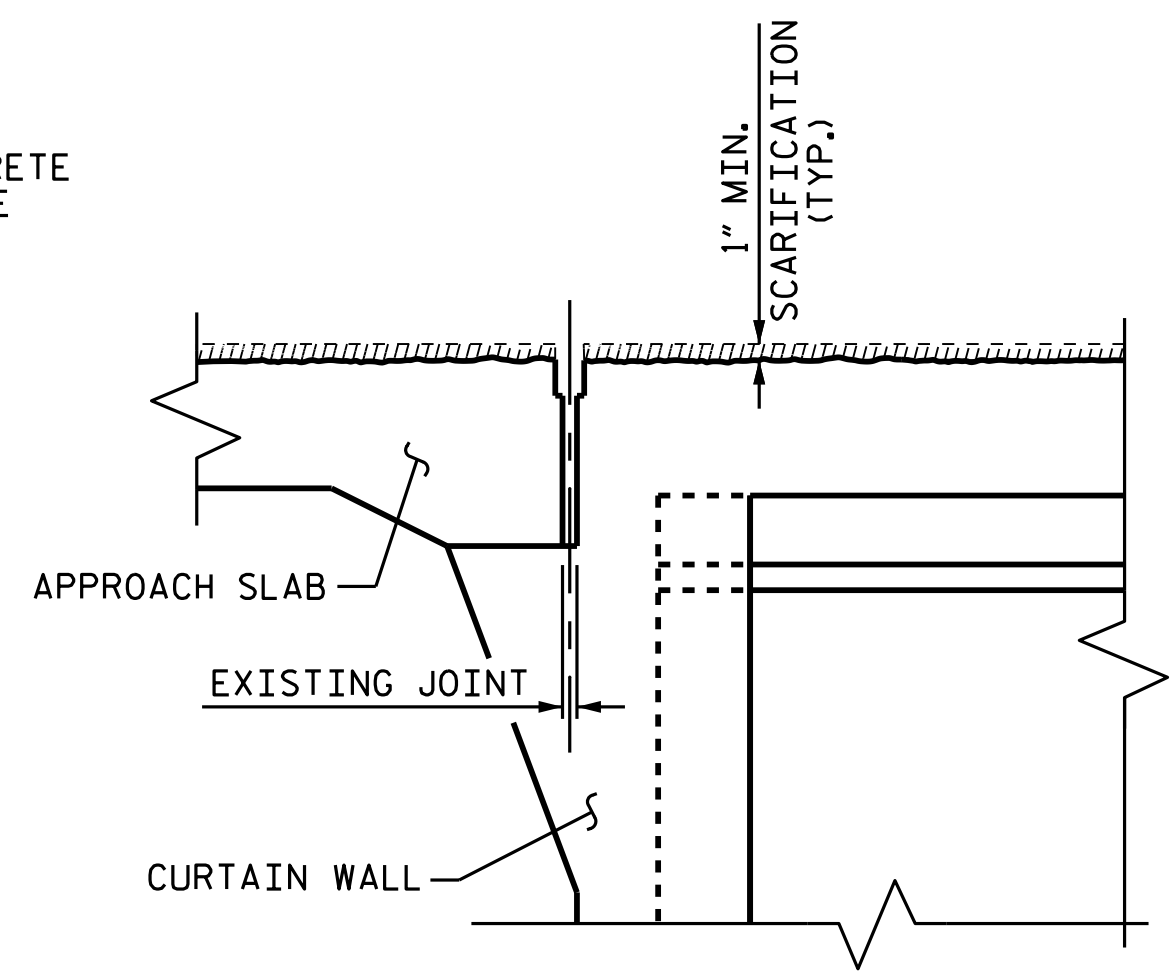


PROPOSED FOAM JOINT SEAL EXPANSION
ALL BENTS

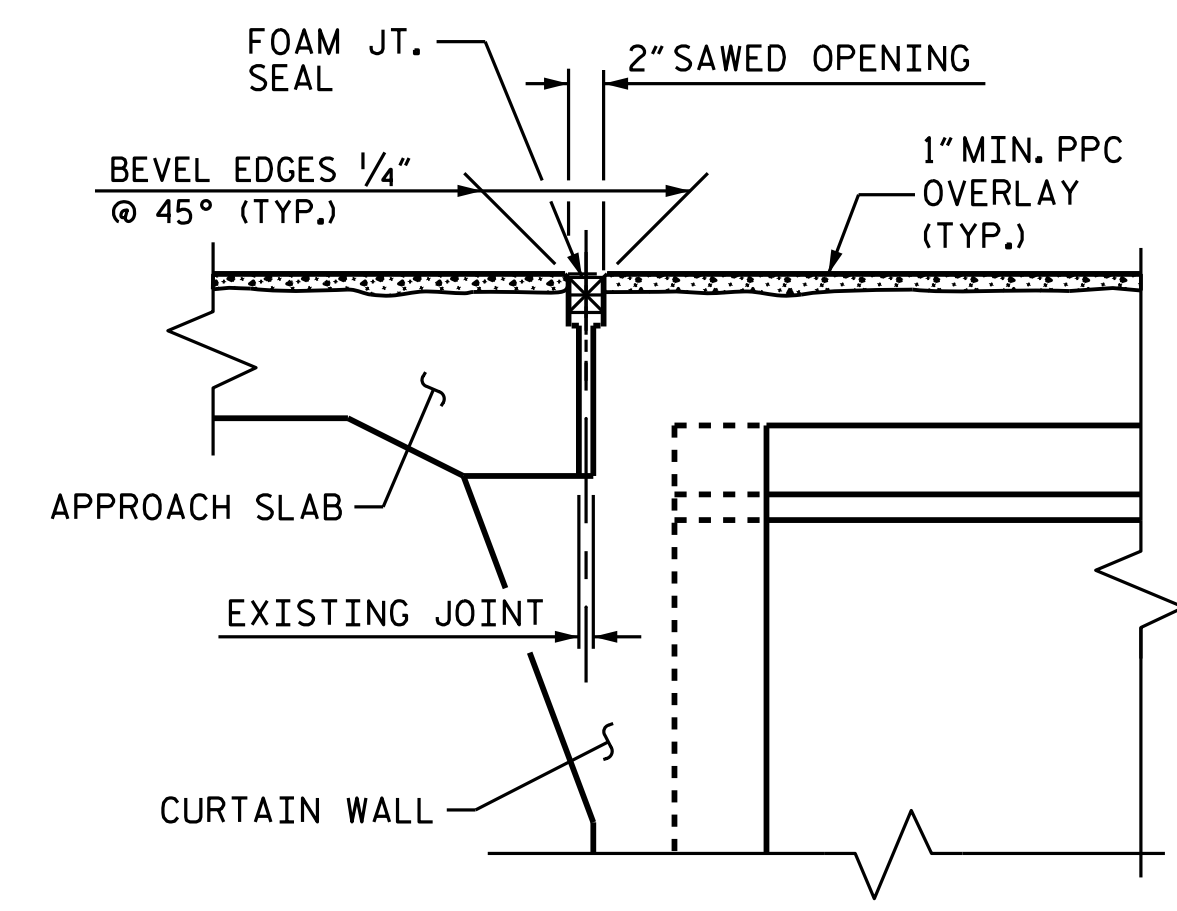
JOINT INSTALLATION SEQUENCE AT BENTS
SECTION A-A



EXISTING JOINT

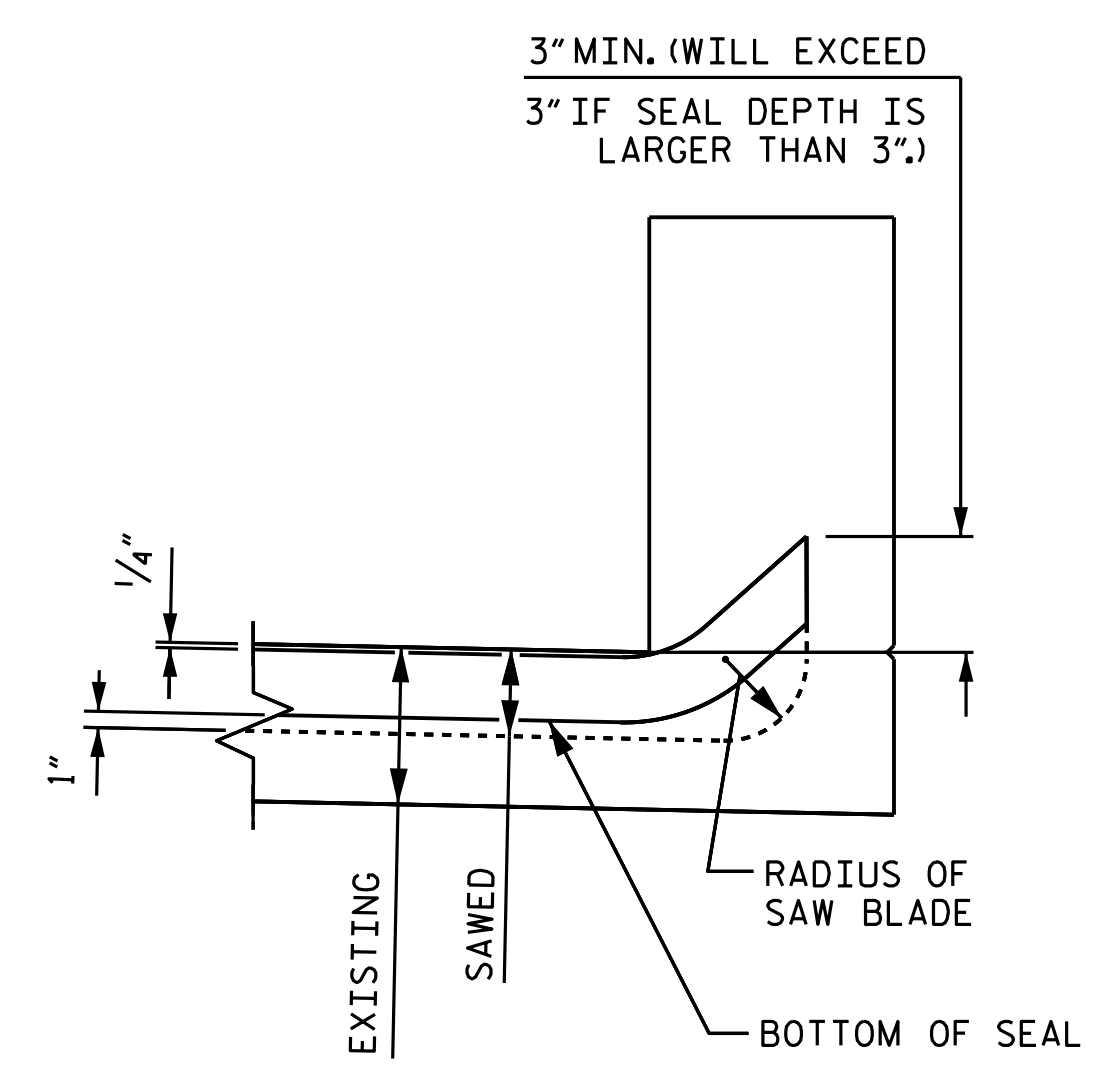


MINIMUM EXISTING JOINT DEMOLITION



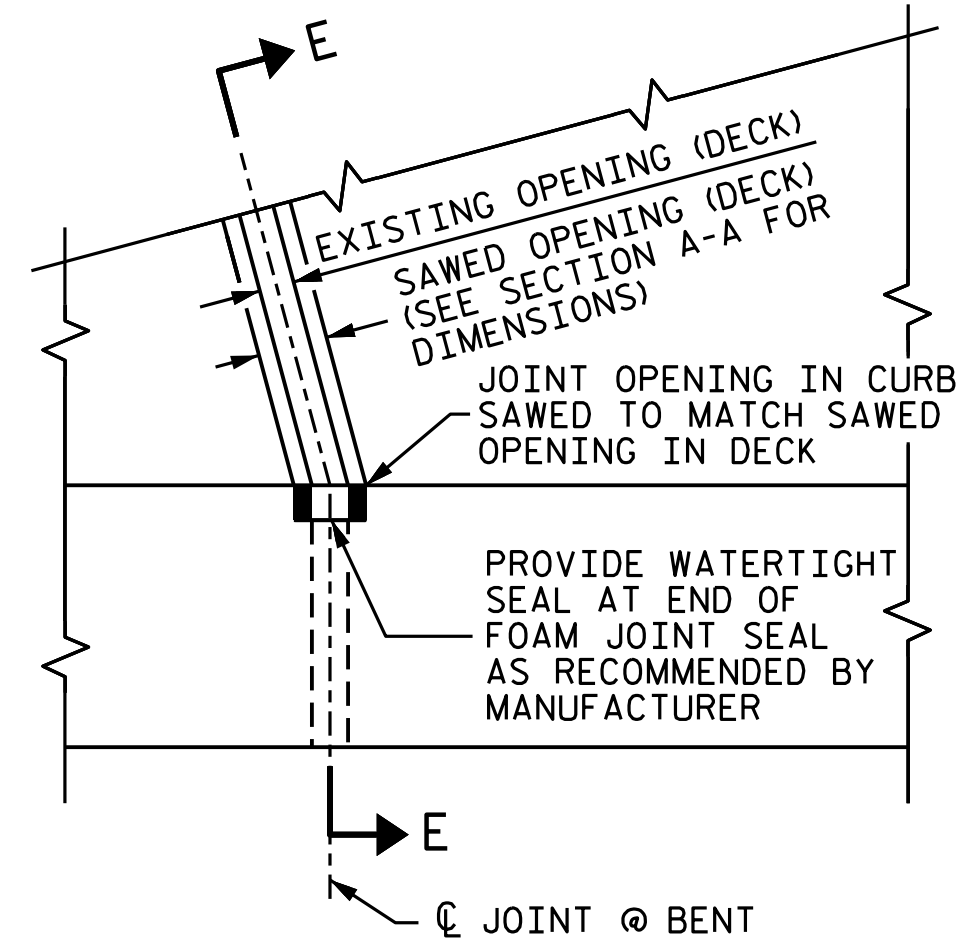
PROPOSED FOAM JOINT SEAL

JOINT INSTALLATION SEQUENCE AT END BENTS
SECTION B-B



SECTION E-E

JOINT SEAL DETAILS



PROJECT NO. I-5825
MECKLENBURG COUNTY
BRIDGE NO. 215



DocuSigned by:
Nicholas Pierce
151108434008485
3/2/2018

STATE OF NORTH CAROLINA
DEPARTMENT OF TRANSPORTATION
RALEIGH

SUPERSTRUCTURE
JOINT DETAILS

DRAWN BY : E. K. POPE DATE : 12/17
CHECKED BY : N. A. PIERCE DATE : 1/18

DOCUMENT NOT CONSIDERED FINAL UNLESS ALL SIGNATURES COMPLETED

REVISIONS						SHEET NO.
NO.	BY:	DATE:	NO.	BY:	DATE:	S-23
1			3			TOTAL SHEETS
2			4			31